

Food Grade Hose & Ducting

BARDUC PVC 381 FOOD

Made from high-grade PVC with smooth exterior and bore, and spring steel wire reinforcement embedded into wall. For use when very high pressure, vacuum or compression resistance is required.

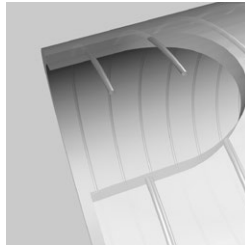
Applications: conveying powders, chips and pellets, also gaseous and liquid media, e.g. industrial, agricultural and food.

- Phthalates free
- Wire spiral reinforcement can be earthed
- Smooth bore and exterior
- High axial strength
- Good resistance to chemicals, acids and alkalis
- Food grade wall – refer to Tech Sheet for Food Approvals information

Use clamp type 211 (refer to page 1413).

Working Temperature:
 -20°C to +70°C
 Intermittent to: +80°C

Tech Sheet
 10421



Super Heavy, Vacuum Proof, Clear PVC, Suction & Delivery, 30 Metres

0392	ID mm	OD mm	bar	Vacuum bar	kg per mtr	£
381-0016-0000	16	22	6.000	0.850	0.265	151.40
381-0020-0000	20	27	5.000	0.850	0.320	206.40
381-0025-0000	25	32	5.000	0.850	0.490	271.75
381-0032-0000	32	40	4.000	0.850	0.695	352.60
381-0038-0000	38	46	4.000	0.850	0.810	431.70
381-0050-0000	50	59	4.000	0.800	1.140	600.20
381-0065-0000	65	76	3.600	0.800	1.795	1000.80
381-0076-0000	76	88	3.600	0.700	2.250	1159.05

Super Heavy, Vacuum Proof, Clear PVC, Suction & Delivery, 20 Metres

0392	ID mm	OD mm	bar	Vacuum bar	kg per mtr	£
381-0102-0000	102	115	3.600	0.700	3.350	1058.15

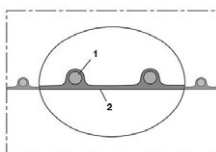
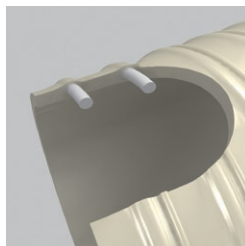
NORPLAST PUR 385 FOOD

Made from premium-grade ether Pre-PUR polyurethane reinforced with a tough, flexible PVC helix.

Applications: multipurpose suction and delivery hose for abrasive materials, including dry food products, using high flowrates, particularly in food and pharmaceutical sectors, e.g. powders, granules, fibres, etc.

- Also gas and liquid tight
- Food grade wall (refer to Tech Sheet for food approvals information)
- Phthalates free
- Lightweight, highly flexible
- Smooth bore
- Excellent abrasion resistance
- Good resistance to microbe and hydrolysis
- Small bend radius
- Good resistance to UV and ozone
- Good resistance to oil, petrol and chemicals

Use clamp type 208/211 (refer to page 1413).



AIRDUC PUR 355 FOOD

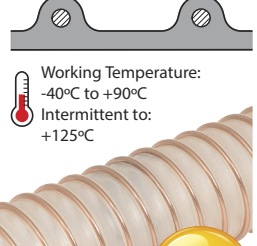
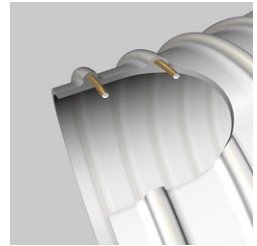
Made from premium-grade ether Pre-PUR polyurethane, reinforced with a spring steel wire helix.

Wall thickness: 1.5mm approx.

Applications: heavy-duty suction and transport hose for highly abrasive materials including food products, using high flowrates, particularly in food and pharmaceutical sectors, e.g. powders, granulates, grains, seeds, fibres, etc.

- Also suitable for liquid media, as well as fume extraction
- Heavy duty, reinforced food grade wall (refer to Tech Sheet for food approvals information)
- Flame retardant to UL94-V2
- Good resistance to microbe and hydrolysis
- Wire spiral reinforcement can be earthed
- Good resistance to oil, petrol and chemicals
- High tensile strength and tear resistance
- Smooth bore, optimised flow (observe direction of flow arrow)
- Small bend radius
- Excellent low temperature flexibility

Use clamp type 212 / 212EC / 216 (refer to page 1413).



Working Temperature:
 -40°C to +90°C
 Intermittent to:
 +125°C

Tech Sheet
 68735

Heavyweight, 1.5mm Wall, Food Grade, 10 Metres

0392	ID mm	OD mm	bar	Vacuum bar	kg per mtr	£
355-0038-1001	38	48	2.895	0.865	0.520	496.25
355-0050-1001	50	60	2.235	0.835	0.660	610.60
355-0065-1001	65	75	1.740	0.675	0.840	744.10
355-0075-1001	75	86	1.515	0.555	1.050	830.00
355-0100-1001	100	111	1.150	0.355	1.490	1323.15
355-0125-1001	125	136	0.925	0.265	1.840	1664.90
355-0150-1001	150	161	0.770	0.180	2.410	2009.75
355-0180-1001	180	191	0.645	0.135	2.870	2431.85
355-0200-1001	200	213	0.580	0.120	3.120	2764.95
355-0250-1001	250	263	0.465	0.075	3.880	3937.90
355-0300-1001	300	313	0.390	0.065	5.160	4641.20

Working Temperature:
 -20°C to +70°C
 Intermittent to:
 +80°C

Tech Sheet
 68736

Polyurethane, Food Grade Suction & Delivery, 10 Metres

0392	ID mm	OD mm	bar	Vacuum bar	kg per mtr	£
385-0025-1001	25	31	1.000	0.250	0.130	97.65
385-0032-1001	32	38	0.850	0.200	0.160	108.80
385-0038-1001	38	45	0.750	0.200	0.200	132.90
385-0040-1001	40	47	0.750	0.200	0.210	134.75
385-0050-1001	50	58	0.500	0.200	0.290	194.05
385-0060-1001	60	68	0.500	0.160	0.430	284.30
385-0063-1001	63	71	0.450	0.160	0.460	303.45
385-0075-1001	75	84	0.375	0.160	0.555	356.00
385-0080-1001	80	89	0.350	0.160	0.590	394.30
385-0100-1001	100	110	0.280	0.130	0.750	511.10