

PVC Industrial Hose & Ducting

NORPLAST PVC-C 384 AS

Made from high quality anti-static PVC compound, reinforced with a tough, flexible PVC helix.

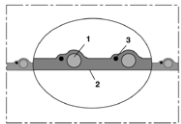
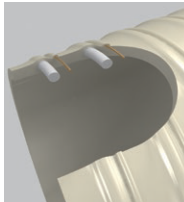
Applications: multipurpose suction and delivery hose for abrasive materials, e.g. dust, powders, granules, fibres and pellets. Suitable for plastics industries, vacuum conveyor systems and hoppers, biomass fuel pellet transfer, etc.

- Gas and liquid tight
- Permanently anti-static, with earthing wire
- Increased working pressure and vacuum rating
- Phthalates free
- Smooth bore, high axial strength
- Good resistance to UV, ozone, chemicals, alkalis and acids

Use clamp type 208/211 (refer to page 1413).

Working Temperature:
-5°C to +70°C approx.
Intermittent to: +80°C approx.

Tech Sheet
20092



Heavy Duty, Anti-static, PVC Suction & Delivery Hose, Earthing Wire, 25 Metres

0392	ID mm	OD mm	bar	Vacuum bar	kg per mtr	£
384-0032-2878	32	39	5	0.700	0.400	316.75
384-0038-2878	38	45	5	0.700	0.530	402.70
384-0040-2878	40	48	5	0.700	0.570	431.40
384-0050-2878	50	59	5	0.700	0.820	603.35
384-0060-2878	60	69	5	0.700	0.990	725.15
384-0065-2878	65	75	5	0.700	1.090	811.15
384-0076-2878	76	86	5	0.700	1.400	1024.65
384-0080-2878	80	91	4	0.700	1.5700	1143.60

Heavy Duty PVC Suction & Delivery Hose, Copper Earthing Wire, 15 Metres

0392	ID mm	OD mm	bar	Vacuum bar	kg per mtr	£
384-0100-2878	100	112	4	0.700	2.220	965.60

AIRDUC PVC 341, GREY

Tech Sheet
10423

Medium Duty PVC Ducting, 10 Metres

0392	ID mm	OD mm	bar	Vacuum bar	kg per mtr	£
341-0025-0000	25	32	1.125	0.400	0.230	154.25
341-0032-0000	32	40	0.890	0.260	0.270	161.15
341-0038-0000	38	46	0.755	0.220	0.320	161.15
341-0045-0000	45	53	0.640	0.185	0.370	180.00
341-0050-0000	50	58	0.575	0.165	0.410	186.35
341-0055-0000	55	63	0.525	0.150	0.450	188.05
341-0065-0000	65	73	0.445	0.125	0.520	208.15
341-0075-0000	75	84	0.390	0.110	0.580	220.15
341-0080-0000	80	89	0.365	0.105	0.610	226.45
341-0090-0000	89	99	0.325	0.090	0.700	238.50
341-0100-0000	100	109	0.295	0.060	0.850	248.25
341-0115-0000	115	124	0.255	0.050	0.980	276.95
341-0125-0000	125	134	0.235	0.045	1.060	306.75
341-0150-0000	150	159	0.195	0.040	1.260	361.75

NORPLAST PVC 383, DARK GREY

A premium quality medium-weight ducting made from high-grade flexible PVC, reinforced with a tough, flexible PVC helix.

Applications: for extracting dust, powders, fumes including galvanising and chemical fumes, vapours and gases as well as transfer of fluids. Suitable for boat building, marine and agricultural applications including cable protection.

- Good resistance to chemicals
- Smooth bore
- Good resistance to most acids and alkalis
- Highly flexible and lightweight
- Small bend radius, kink-resistant
- Flame retardant to UL94-V2

Use clamp type 208 (refer to page 1413).

Working Temperature:
-5°C to +60°C

Tech Sheet
60189

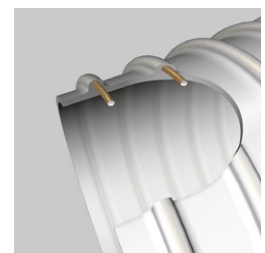
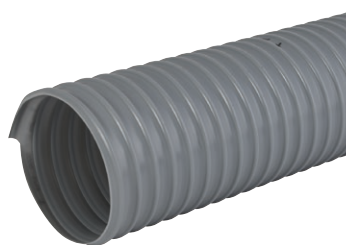


Medium Duty, Flame-retardant PVC Ducting, 25 Metres

0392	ID mm	OD mm	bar	Vacuum bar	kg per mtr	£
383-0025-0000	25	31	1.000	0.250	0.160	75.10
383-0032-0000	32	38	0.850	0.200	0.210	96.95
383-0038-0000	38	45	0.750	0.200	0.260	116.05
383-0045-0000	45	52	0.650	0.200	0.350	161.05
383-0050-0000	50	58	0.500	0.200	0.430	195.20
383-0063-0000	63	71	0.450	0.160	0.520	234.75
383-0076-0000	76	85	0.400	0.150	0.640	289.35
383-0080-0000	80	89	0.350	0.150	0.750	337.15

Medium Duty, Flame-retardant PVC Ducting, 15 Metres

0392	ID mm	OD mm	bar	Vacuum bar	kg per mtr	£
383-0090-0000	90	100	0.300	0.140	0.850	229.30
383-0100-0000	100	110	0.280	0.130	0.970	267.00
383-0125-0000	125	136	0.250	0.100	1.250	343.15
383-0150-0000	150	162	0.180	0.080	1.600	425.80



A premium quality medium weight ducting made from high-grade flexible PVC with spring steel reinforcement firmly embedded into the wall.

Applications: for extracting dust, powders, fumes, gases and air conditioning/ventilation.

Wall Thickness: 0.9mm approx.

- Phthalates free
- Wire spiral reinforcement can be earthed
- Highly flexible
- Small bend radius, kink proof
- Good resistance to chemicals, acids and alkalis
- Smooth bore, optimised flow
- UV and ozone resistant

Use clamp type 212 (refer to page 1413).

Working Temperature:
-20°C to +70°C
Intermittent to:
+80°C