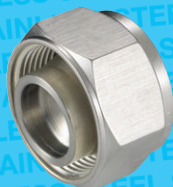


316 Stainless Steel Twin Ferrule Metric Tube Fittings



Plugs

Tech Sheet 20254



Tube

0292	OD mm	£
P-3-FT	3	17.65
P-4	4	10.10
P-6-FT	6	10.10
P-8	8	11.25
P-10	10	12.05
P-12	12	15.25
P-15	15	20.10
P-16	16	36.95
P-18	18	42.65
P-20	20	54.15
P-22	22	66.55
P-25	25	75.80

Nuts

Tech Sheet 20255



Tube

0292	OD mm	£
N-3	3	7.40
N-4	4	3.90
N-6	6	3.90
N-8	8	3.90
N-10	10	4.25
N-12	12	6.95
N-15	15	9.70
N-16	16	18.75
N-18	18	20.00
N-20	20	25.55
N-25	25	34.60

Back Ferrules

Tech Sheet 20257



Tube

0292	OD mm	£
BF-3	3	6.00
BF-4	4	5.75
BF-6	6	5.00
BF-8	8	4.25
BF-10	10	6.95
BF-12	12	6.95
BF-14	14	9.70
BF-15	15	9.70
BF-16	16	10.15
BF-18	18	11.40
BF-20	20	16.05
BF-22	22	18.45
BF-25	25	21.85

Front Ferrules

Tech Sheet 20256



Tube

0292	OD mm	£
FF-3	3	6.70
FF-4	4	6.05
FF-6	6	4.90
FF-8	8	5.45
FF-10	10	6.05
FF-12	12	6.70
FF-14	14	9.40
FF-15	15	9.40
FF-16	16	10.15
FF-18	18	11.40
FF-20	20	16.05
FF-22	22	18.45
FF-25	25	21.85

Lock Nuts



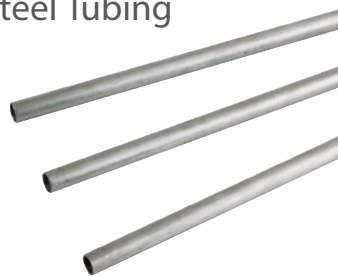
To Suit Bulkheads

0292	OD mm	£
BLN-3	3	3.45
BLN-4	4	3.45
BLN-6	6	3.45
BLN-8	8	3.45
BLN-10-FT	10	3.75
BLN-12-FT	12	5.95
BLN-14	14	8.40
BLN-16-FT	16	9.70
BLN-18	18	10.25
BLN-20-FT	20	13.25

For...



Stainless Steel Tubing



...see pages 171-172