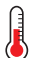

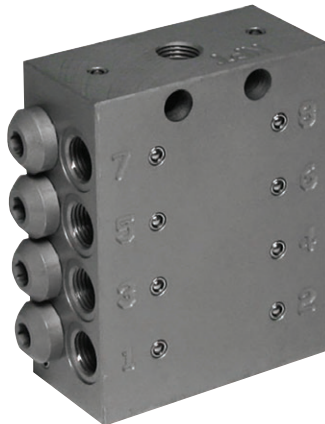


Distribution Elements

The PVB Distributor accurately meters and dispenses lubricant to as many as 20 outlet lines, at operating pressures up to 300 bar. It is a progressive distributor of solid block design for use with oil or grease applications. PVB Distributors are available in sizes ranging from 6 to 20 outlets.

 Working Temperature:
-20°C to +120°C

 Maximum Working Pressure:
With indicator pin: 160 bar
Without indicator pin: 300 bar

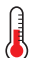



**Tech Sheet
68024**

PVB Distributor, BSPP x Metric

0502	No. of Outlets	£
PVB06A01AAA02	6	161.50
PVB08A01AAAA02	8	161.50
PVB14A02AAAAAA03	14	235.55

U-Block Divider valves are especially designed for use in progressive lubrication systems. Several outlet configurations are available to allow you to tailor the divider valve to your specifications.

 Working Temperature:
-10°C to +70°C

 Maximum Working Pressure:
Oil: 60 bar
Grease: 150 bar





**Tech Sheet
68025**

U-Block Divider Valves, BSPP

0502	No. of Outlets	£
U4R	4	86.05
U6R	6	92.90
U8R	8	99.75
U12R	12	113.55

The ZEM series metering elements are positive displacement injectors (PDI) that deliver fixed quantities of lubricant to the attached friction point. Other configurations are available on request.

 Working Temperature:
-10°C to +70°C

 Working Pressure:
15 to 45 bar

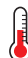
**Tech Sheet
68029**


ZEM Injector

0505	Inlet	OD mm	£
ZEM393PHIH	M12 x 1	4	138.10



FL-32 / 33 Injectors are perfectly adapted to lubricate all types of machines with a cyclic sequence. Discharge of each injector is adjustable yet delivers a precise amount of lubricant.

 Maximum Working Temperature:
+176°C

 Working Pressure:
82 to 238 bar


**Tech Sheet
68026**

FL Replacement Injectors for Grease, NPT

0502		£
27163-R	1/8"	64.20
27164-RSS	1/4"	127.90

FL-42 / 43 Injectors are perfectly adapted to lubricate all types of machines with a cyclic sequence. Discharge of each injector is adjustable yet delivers a precise amount of lubricant.

 Maximum Working Temperature:
+176°C

 Working Pressure:
82 to 238 bar

**Tech Sheet
68027**

FL Injectors for Oil, NPT

0502		£
27166	1/8"	127.05
27165	1/4"	89.35

