

Hydraulic Adaptors

1/8"-3/4" 680 bar 1"-2" 500 bar

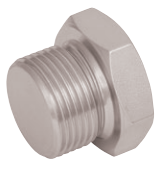


Maximum Working Pressure:
 1/8" to 3/4" 680 bar
 1" to 2" 500 bar

Standard hydraulic adaptors do not adhere to the working pressure of multi spiral hose. Please use KR500 Hydraulic Adaptors for high pressure and multi spiral applications. Also available in stainless steel and hiduron upon request.

Plugs

Tech Sheet 10740



BSPP

0450



KRP2	1/8"	1.60
KRP4	1/4"	1.60
KRP6	3/8"	2.10
KRP8	1/2"	2.45
KRP10	5/8"	6.60
KRP12	3/4"	3.60
KRP16	1"	7.25
KRP20	1.1/4"	11.70
KRP24	1.1/2"	19.90
KRP32	2"	34.70

Tech Sheet 10741



BSPT

0450



KRPT2	1/8"	0.75
KRPT4	1/4"	1.35
KRPT6	3/8"	2.00
KRPT8	1/2"	4.55
KRPT12	3/4"	8.65
KRPT16	1"	13.75
KRPT20	1.1/4"	21.80

Gauge Adaptors

Tech Sheet 10742



BSPP

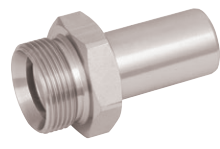
0450



KRGA4-4	1/4"	1/4"	17.80
KRGA6-4	3/8"	1/4"	22.35
KRGA8-4	1/2"	1/4"	24.60

Stud Standpipes

Tech Sheet 10743



OD Imperial to BSPP

0450



KR4-2SSAR	1/4"	1/8"	5.95
KR4-4SSAR	1/4"	1/4"	5.95
KR5-2SSAR*	5/16"	1/8"	6.55
KR5-4SSAR*	5/16"	1/4"	6.55
KR5-6SSAR	5/16"	3/8"	6.55
KR6-4SSAR	3/8"	1/4"	8.45
KR6-6SSAR	3/8"	3/8"	8.45
KR8-4SSAR	1/2"	1/4"	10.50
KR8-6SSAR	1/2"	3/8"	10.80
KR8-8SSAR	1/2"	1/2"	10.75
KR10-6SSAR	5/8"	3/8"	8.30
KR10-8SSAR*	5/8"	1/2"	8.15
KR10-12SSAR*	5/8"	3/4"	19.40
KR12-8SSAR	3/4"	1/2"	12.45
KR12-12SSAR	3/4"	3/4"	16.15
KR14-8SSAR*	7/8"	1/2"	13.55
KR14-12SSAR*	7/8"	3/4"	13.55
KR14-16SSAR	7/8"	1"	14.65
KR16-12SSAR	1"	3/4"	18.95
KR16-16SSAR	1"	1"	18.95
KR20-12SSAR	1.1/4"	3/4"	20.60
KR20-16SSAR	1.1/4"	1"	20.60
KR20-20SSAR	1.1/4"	1.1/4"	33.45
KR24-16SSAR*	1.1/2"	1"	24.00
KR24-20SSAR*	1.1/2"	1.1/4"	24.00
KR24-24SSAR*	1.1/2"	1.1/2"	24.20
KR32-24SSAR	2"	1.1/2"	66.10
KR32-32SSAR	2"	2"	68.50

Banjos

Tech Sheet 10745



Seals sold separately

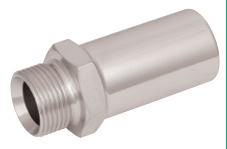
BSPP

0450



KRA4-4BJ	1/4"	25.25
KRA6-6BJ	3/8"	27.90
KRA8-8BJ	1/2"	40.60
KRA12-12BJ	3/4"	66.80

Tech Sheet 10744



OD Metric to BSPP

0450



KRM6-2SSAR	6	1/8"	8.90
KRM6-4SSAR	6	1/4"	8.50
KRM8-2SSAR	8	1/8"	8.65
KRM8-4SSAR	8	1/4"	8.00
KRM8-6SSAR	8	3/8"	9.50
KRM10-4SSAR	10	1/4"	8.20
KRM10-6SSAR	10	3/8"	10.50
KRM12-4SSAR	12	1/4"	9.50
KRM12-6SSAR	12	3/8"	9.80
KRM12-8SSAR	12	1/2"	9.75
KRM16-6SSAR	16	3/8"	11.35
KRM16-8SSAR	16	1/2"	11.20
KRM16-12SSAR	16	3/4"	28.15
KRM20-8SSAR	20	1/2"	11.75
KRM20-12SSAR	20	3/4"	12.15
KRM22-8SSAR	22	1/2"	13.55
KRM22-12SSAR	22	3/4"	13.55
KRM22-16SSAR	22	1"	13.55
KRM25-12SSAR	25	3/4"	12.80
KRM25-16SSAR	25	1"	18.50
KRM30-12SSAR	30	3/4"	23.50
KRM30-16SSAR	30	1"	23.50
KRM30-20SSAR	30	1.1/4"	36.75
KRM38-16SSAR	38	1"	26.30
KRM38-20SSAR	38	1.1/4"	26.30
KRM38-24SSAR	38	1.1/2"	26.30
KRM50-24SSAR	50	1.1/2"	47.70
KRM50-32SSAR	50	2"	65.35

Bleed Plugs (Air)

Tech Sheet 10746



BSPP

0450



KRP2AB	1/8"	3.50
--------	------	------

*Minimum order quantity on these items may apply

1. Hydraulics
 Hydraulics
 Hydraulic Quick Release Couplings
 Pneumatic Quick Release Couplings
 Air Prep, Media, Monitor & Test
 KELM™ Pneumatics
 Pneumatic & Vacuum Equipment
 Valves
 Ring Main Systems
 Adaptors & Fittings
 Stainless Steel
 Malleable Iron
 Hose, Tubing & Couplings
 Clamps & Clips
 Sprays & Adhesives
 Blow Guns, Vacuum & Nozzles
 Pressure Wash, Fuelling & Lubrication
 Air Tools & Compressor Equipment
 Tools, Hardware & PPE