

Triple-Lok Tube Fittings



Page Tech Sheet 60429

Tube x Female Swivel Nuts



90° Elbow

0486	OD mm	OD	£
4C6MXS	6	1/4"	14.75
5C6MXS	8	5/16"	15.40
6C6MXS	10	3/8"	15.70
8C6MXS	12	1/2"	16.20
10C6MXS	14,15,16	5/8"	17.45
12C6MXS	18, 20	3/4"	24.90
16C6MXS	25	1"	36.55
20C6XS	28,30,32	1.1/4"	68.70
24C6XS	35,38	1.1/2"	92.60



45° Elbow

0486	OD mm	OD	£
4V6XS	6	1/4"	17.95
5V6XS	8	5/16"	21.65
6V6MXS	10	3/8"	16.40
8V6XS	12	1/2"	17.55
10V6MXS	14,15,16	5/8"	22.10
12V6XS	18, 20	3/4"	27.75
16V6XS	25	1"	47.30
20V6XS	28,30,32	1.1/4"	81.25
24V6XS	35,38	1.1/2"	103.35

Run Tee



0486	OD mm	OD	£
4R6MXS	6	1/4"	24.65
5R6MXS	8	5/16"	26.05
6R6MXS	10	3/8"	21.80
8R6MXS	12	1/2"	22.10
10R6MXS	14,15,16	5/8"	26.70
12R6MXS	18, 20	3/4"	34.65
16R6MXS	25	1"	48.90
20R6XS	28,30,32	1.1/4"	109.45
24R6XS	35,38	1.1/2"	127.30



Branch Tee

0486	OD mm	OD	£
4S6XS	6	1/4"	25.70
5S6MXS	8	5/16"	29.35
6S6MXS	10	3/8"	22.20
8S6MXS	12	1/2"	23.35
10S6MXS	14,15,16	5/8"	31.15
12S6MXS	18, 20	3/4"	36.25
16S6MXS	25	1"	53.70
20S6XS	28,30,32	1.1/4"	116.20
24S6XS	35,38	1.1/2"	151.80

Blanking Ends



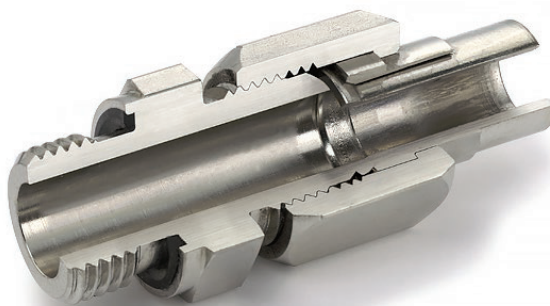
Male, Plug

0486	OD mm	OD	£
4PNTXS	6	1/4"	7.60
5PNTXS	8	5/16"	8.30
6PNTXS	10	3/8"	6.15
8PNTXS	12	1/2"	6.50
10PNMTXS	14,15,16	5/8"	7.50
12PNMTXS	18, 20	3/4"	9.90
16PNTXS	25	1"	16.65
20PNTXS	28,30,32	1.1/4"	25.30
24PNTXS	35,38	1.1/2"	33.15



Female, Cap

0486	OD mm	OD	£
4FNMTXS	6	1/4"	2.45
5FNMTXS	8	5/16"	3.45
6FNMTXS	10	3/8"	2.90
8FNMTXS	12	1/2"	3.10
10FNMTXS	14,15,16	5/8"	4.30
12FNMTXS	18, 20	3/4"	5.70
16FNMTXS	25	1"	8.35
20FNMTXS	28,30,32	1.1/4"	34.40
24FNMTXS	35,38	1.1/2"	39.20



Triple-Lok[®] is the original 37° flare fitting designed by Parker. Continued improvements and refinements give a higher working pressure than the minimum levels specified in the ISO 8434-2 and SAE J514 international standards.

Maybe this and the reputation for reliability is the reason that Triple-Lok[®] has been chosen by more OEM equipment manufacturers than any other brand of "JIC fitting".