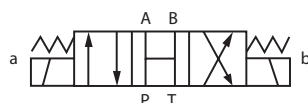
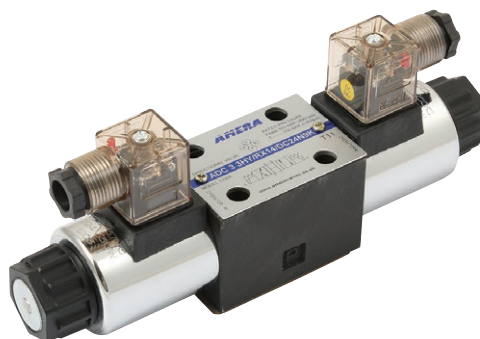


## CETOP 3, Double Solenoid

Max Flow Rate: 80 l/min  
 Viscosity 2.8-100 mm<sup>2</sup>/s  
 ISO 4401 Size 3  
 DIN 24340 Size 6  
 IP65

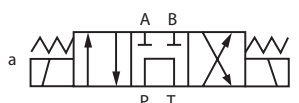
Working Temperature:  
 -20°C to +70°C

Maximum Working Pressure:  
 350 bar



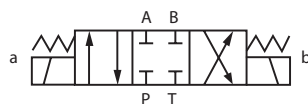
3 Position, All Ports Open, Spring Centred

0451	Model		£
1010-1004	ADC 3 3HY/RX14/AC110N9K	110V AC	145.30
1010-1006	ADC 3 3HY/RX14/DC24N9K	24V DC	145.30
1010-1005	ADC 3 3HY/RX14/DC12N9K	12V DC	145.30



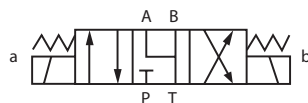
3 Position, P & T Connected A & B Blocked, Spring Centred

0451	Model		£
1010-1011	ADC 3 3GY/RX14/AC110N9K	110V AC	157.80
1010-1012	ADC 3 3GY/RX14/DC24N9K	24V DC	157.80
1010-1061	ADC 3 3GY/RX14/DC12N9K	12V DC	157.80



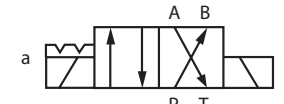
3 Position, All Ports Closed, Spring Centred

0451	Model		£
1010-1007	ADC 3 3EY/RX14/AC110N9K	110V AC	145.30
1010-1008	ADC 3 3EY/RX14/DC24N9K	24V DC	145.30
1010-1060	ADC 3 3EY/RX14/DC12N9K	12V DC	145.30



3 Position, A, B & T Connected, Spring Centred

0451	Model		£
1010-1009	ADC 3 3JY/RX14/AC110N9K	110V AC	145.30
1010-1010	ADC 3 3JY/RX14/DC24N9K	24V DC	145.30
1010-1062	ADC 3 3JY/RX14/DC12N9K	12V DC	145.30



2 Position, Detent

0451	Model		£
1010-1013	ADC 3 2DD/RX14/AC110N9K	110V AC	157.80
1010-1014	ADC 3 2DD/RX14/DC24N9K	24V DC	157.80

Hydraulics

Hydraulic Quick Release Couplings

Pneumatic Quick Release Couplings

Air Prep., Media, Monitor & Test

KELM™ Pneumatics

Pneumatic & Vacuum Equipment

Valves

Ring Main Systems

Adaptors & Fittings

Stainless Steel

Malleable Iron

Hose, Tubing & Couplings

Clamps & Clips

Sprays & Adhesives

Blow Guns, Vacuum & Nozzles

Pressure Wash, Fuelling & Lubrication

Air Tools & Compressor Equipment

Tools, Hardware & PPE