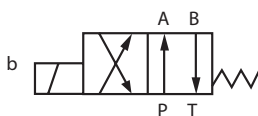


CETOP 5, Single Solenoid

Max Flow Rate: 120 l/min
 Viscosity 2.8-100 mm²/s
 ISO 4401 Size 5
 DIN 24340 Size 10
 IP65

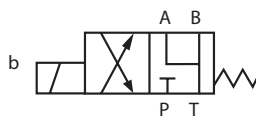
Working Temperature:
 -20°C to +70°C

Maximum Working Pressure:
 315 bar



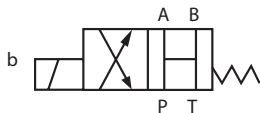
2 Position, Spring Offset End to End

0451	Model		£
1010-1015	ADC 5 2DY/RX14/AC110N9K	110V AC	179.85
1010-1016	ADC 5 2DY/RX14/DC24N9K	24V DC	179.85
1010-1063	ADC 5 2DY/RX14/DC12N9K	12V DC	179.85



2 Position, A, B & T Connected, Spring Return

0451	Model		£
1010-1071	ADC 5 2JY/RX14/DC12N9K	12V DC	179.85
1010-1072	ADC 5 2JY/RX14/DC24N9K	24V DC	179.85



2 Position, All Ports Open, Spring Offset to Centre

0451	Model		£
1010-1069	ADC 5 2HY/RX14/DC24N9K	24V DC	179.85
1010-1064	ADC 5 2HY/RX14/DC12N9K	12V DC	179.85

Replacement Coils



CETOP 3

0451		£
1010-1036	110V AC	31.00
1010-1037	220V AC	31.00
1010-1038	12V DC	31.00
1010-1039	24V DC	31.00



CETOP 5

0451		£
1010-1040	110V AC	41.70
1010-1041	220V AC	41.70
1010-1042	12V DC	41.70
1010-1043	24V DC	41.70