

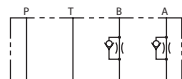
Tech Sheet 10682

Working Temperature:
-20°C to +70°C

Maximum Working Pressure:
350 bar

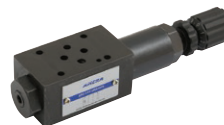
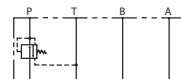
Max Flow Rate: 80 l/min
Viscosity 2.8-100 mm²/s
ISO 4401 Size 3
DIN 24340 Size 6

CETOP 3 Sandwich Valves



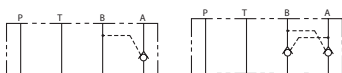
Flow Restrictor

0451	Model	Type	£
1010-1022	AFR 3 X2/RX14/2Q	A & B Meter In	90.55
1010-1023	AFR 3 Y2/RX14/2Q	A & B Meter Out	90.55
1010-1053	AFR 3 Z P2/RX14/2Q	P Line	95.30



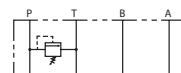
Pressure Reducing

0451	Model	£
1010-1026	ARD 3 PP 2/RX14/75	3.5 - 75
1010-1027	ARD 3 PP 2/RX14/150	10 - 150
1010-1028	ARD 3 PP 2/RX14/210	20 - 210



Pilot Operated Check

0451	Model	Type	£
1010-1024	APOC 3 A1/RX14/N	Single	104.85
1010-1025	APOC 3 AB1/RX14/	Double	111.90



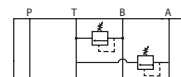
Single Line Pressure Relief

0451	Model	£
1010-1050	ASPR 3 PT1/RX14/100	3 - 100
1010-1029	ASPR 3 PT1/RX14/200	10 - 200
1010-1030	ASPR 3 PT1/RX14/315	50 - 315



Direct Operated Check

0451	Model	£
1010-1052	ADOC 3 PA/RX14/	0.5



Dual Line Pressure Relief

0451	Model	£
1010-1051	ADPR 3 AT1 BT1/RX14/200	10 - 200

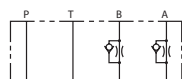
Tech Sheet 10683

Working Temperature:
-20°C to +70°C

Maximum Working Pressure:
315 bar

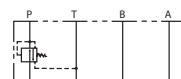
Max Flow Rate; 80 l/min
Viscosity 2.8-100 mm²/s
ISO 4401 Size 5
DIN 24340 Size 10

CETOP 5 Sandwich Valves



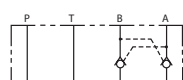
Flow Restrictor

0451	Model	Type	£
1010-1031	AFR 5 Y2/RX14/2Q	A & B Meter Out	144.10
1010-1057	AFR 5 X2/RX14/2Q	A & B Meter In	211.95



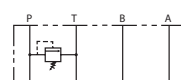
Pressure Reducing

0451	Model	£
1010-1033	ARD 5 PP 2/RX14/200	8.5 - 200
1010-1034	ARD 5 PP 2/RX14/315	8.5 - 315



Pilot Operated Check

0451	Model	Type	£
1010-1032	APOC 5 AB1/RX14	Double	182.25



Single Line Pressure Relief

0451	Model	£
1010-1035	ASPR 5 PT1/RX14/315	8.5 - 315