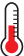




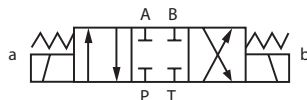
CETOP 3 Double Solenoid Directional Control Valves

Max flow rates up to 80 l/min.
 Mounting Interface:
 ISO 4401 Size 3.
 ANSI/B93.7M Size 3.
 CETOP RP6SH Size 3.
 DIN 24340 (NG6).

 Temperature Limits:
 Min -20°C (-4°F)
 Max +70°C (+150°F)

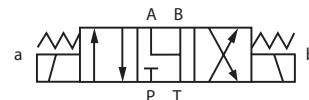
 Working Temperature:
 -20°C (-4°F) to +70°C (+150°F)

 Maximum Working Pressure:
 350 bar (5075 psi)




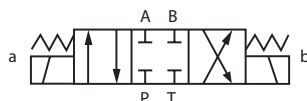
3 Position, All Ports Closed, Spring Centred

0343		Manufacturer's Code	£
529761	110V AC	DG4V 3 2C M U A6 60	148.65




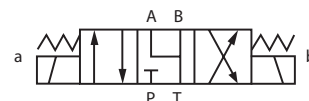
3 Position, A, B & T Connected, Spring Centred

0343		Manufacturer's Code	£
565465	24V DC	DG4V 3 6C M U H7 60	148.65
859177	110V AC	DG4V 3 6C M U A6 60	148.65




3 Position, All Ports Closed, Spring Centred, Water Resistant Override

0343		Manufacturer's Code	£
859172	220/240V	DG4V 3 2C H M U D6 60	215.60
870177	24V DC	DG4V 3 2C H M U H7 60	215.60
870378	12V DC	DG4V 3 2C H M U G7 60	215.60



3 Position, A, B & T Connected, Spring Centred, Water Resistant Override

0343		Manufacturer's Code	£
869952	12V DC	DG4V 3 6C H M U G7 60	215.60
869953	24V DC	DG4V 3 6C H M U H7 60	215.60
02-146111	110/120V 50/60Hz	DG4V 3 6C H M U B6 60	215.60

Other voltages are available. Please contact Business Development Team for more details.