

Hydraulic Hose Connectors

ORFS

• Hexavalent chromium free plating



ORFS Male (O-Ring Face)

0309		To Suit Hose I.D.	£
ORFSM0404CF	9/16"	1/4"	2.50
ORFSM0604CF	11/16"	1/4"	3.10
ORFSM0605CF	11/16"	5/16"	3.10
ORFSM0606CF	11/16"	3/8"	3.10
ORFSM0806CF	13/16"	3/8"	4.45
ORFSM0808CF	13/16"	1/2"	3.90
ORFSM1008CF	1"	1/2"	6.00
ORFSM1010CF	1"	5/8"	6.65
ORFSM1208CF	1.3/16"	1/2"	9.55
ORFSM1210CF	1.3/16"	5/8"	8.75
ORFSM1212CF	1.3/16"	3/4"	9.05
ORFSM1612CF	1.7/16"	3/4"	14.95
ORFSM1616CF	1.7/16"	1"	11.80
ORFSM2020CF	1.11/16"	1.1/4"	82.15
ORFSM2424CF	2"	1.1/2"	134.80



ORFS Female Insert

0309		To Suit Hose I.D.	£
ORFSF0404CF	9/16"	1/4"	1.65
ORFSF0604CF	11/16"	1/4"	2.25
ORFSF0605CF	11/16"	5/16"	2.25
ORFSF0606CF	11/16"	3/8"	2.25
ORFSF0806CF	13/16"	3/8"	2.45
ORFSF0808CF	13/16"	1/2"	2.45
ORFSF1008CF	1"	1/2"	3.75
ORFSF1010CF	1"	5/8"	3.75
ORFSF1012CF	1"	3/4"	10.25
ORFSF1208CF	1.3/16"	1/2"	4.00
ORFSF1210CF	1.3/16"	5/8"	8.55
ORFSF1212CF	1.3/16"	3/4"	4.00
ORFSF1612CF	1.7/16"	3/4"	7.75
ORFSF1616CF	1.7/16"	1"	7.75
ORFSF2020CF	1.11/16"	1.1/4"	57.30
ORFSF2424CF	2"	1.1/2"	119.80



ORFS Female 45° Elbow Inserts

0309		To Suit Hose I.D.	£
ORFSF044504CF	9/16"	1/4"	2.80
ORFSF064504CF	11/16"	1/4"	2.25
ORFSF064505CF	11/16"	5/16"	3.05
ORFSF064506CF	11/16"	3/8"	4.00
ORFSF084506CF	13/16"	3/8"	4.45
ORFSF084508CF	13/16"	1/2"	4.45
ORFSF104508CF	1"	1/2"	5.10
ORFSF104510CF	1"	5/8"	5.10
ORFSF104512CF	1"	3/4"	16.10
ORFSF124508CF	1.3/16"	1/2"	7.05
ORFSF124510CF	1.3/16"	5/8"	16.10
ORFSF124512CF	1.3/16"	3/4"	7.05
ORFSF164512CF	1.7/16"	3/4"	13.00
ORFSF164516CF	1.7/16"	1"	13.00
ORFSF204520CF	1.11/16"	1.1/4"	112.50
ORFSF244524CF	2"	1.1/2"	223.75



ORFS Female 90° Elbow Insert

0309		To Suit Hose I.D.	£
ORFSF049004CF	9/16"	1/4"	2.80
ORFSF069004CF	11/16"	1/4"	4.00
ORFSF069005CF	11/16"	5/16"	4.00
ORFSF069006CF	11/16"	3/8"	4.00
ORFSF089006CF	13/16"	3/8"	4.45
ORFSF089008CF	13/16"	1/2"	4.45
ORFSF109008CF	1"	1/2"	5.10
ORFSF109010CF	1"	5/8"	5.10
ORFSF109012CF	1"	3/4"	16.10
ORFSF129008CF	1.3/16"	1/2"	7.05
ORFSF129010CF	1.3/16"	5/8"	13.25
ORFSF129012CF	1.3/16"	3/4"	7.05
ORFSF169012CF	1.7/16"	3/4"	13.00
ORFSF169016CF	1.7/16"	1"	13.00
ORFSF209016CF	1.11/16"	1"	45.75
ORFSF209020CF	1.11/16"	1.1/4"	105.60
ORFSF249024CF	2"	1.1/2"	223.65

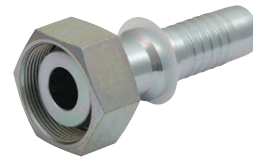
French Metric (GAZ)

French GAZ have a 24° seat and metric fine threads.



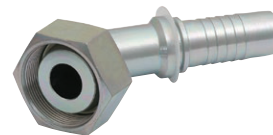
Male, 24° Seat

0309		To Suit Hose I.D.	£
FMM06-M20CF	M20 x 1.5	3/8"	5.30
FMM08-M24CF	M24 x 1.5	1/2"	7.35
FMM10-M30CF	M30 x 1.5	5/8"	9.85
FMM12-M36CF	M36 x 1.5	3/4"	11.75



Female, 24° Seat

0309		To Suit Hose I.D.	£
FMF06-M20CF	M20 x 1.5	3/8"	5.80
FMF08-M24CF	M24 x 1.5	1/2"	7.80
FMF10-M30CF	M30 x 1.5	5/8"	11.80
FMF12-M36CF	M36 x 1.5	3/4"	11.80



45° Female Elbow, 24° Seat

0309		To Suit Hose I.D.	£
FMF0645-M20CF	M20 x 1.5	3/8"	7.60
FMF0845-M24CF	M24 x 1.5	1/2"	10.00
FMF1045-M30CF	M30 x 1.5	5/8"	18.40
FMF1245-M36CF	M36 x 1.5	3/4"	25.50



90° Female Elbow, 24° Seat

0309		To Suit Hose I.D.	£
FMF0690-M20CF	M20 x 1.5	3/8"	7.60
FMF0890-M24CF	M24 x 1.5	1/2"	10.00
FMF1090-M30CF	M30 x 1.5	5/8"	18.40
FMF1290-M36CF	M36 x 1.5	3/4"	25.50