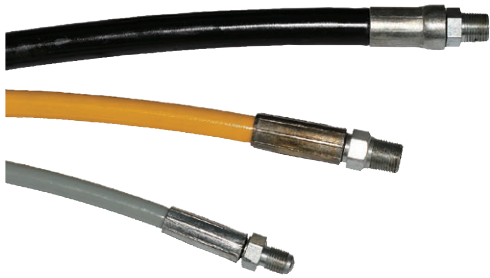


High Pressure Hoses



Application:

- High pressure hydraulic lines, for use with hydraulic tooling, rescue safety equipment, tensioning tools & other hydraulic equipment where high pressure is required

Construction:

- Inner tube: Thermoplastic Elastomer
- Reinforcement: Single/Double wire braid of aramid fibre with a single wire braid
- Outer cover: Black polyurethane as standard with a choice of red, blue & yellow available upon request

Recommended Fluids:

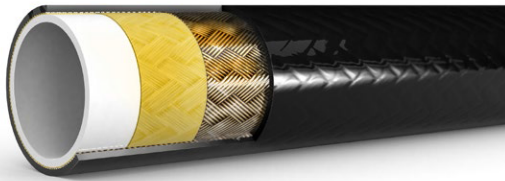
- Hose suitable for Petroleum based hydraulic oil and water glycol based fluids, lubricating oils, grease, solvent, (gas transfer, air) and water once pin pricked - Available upon request

Multiple Lines also available upon Request.

We can manufacture hose assemblies in house to suit your requirements.

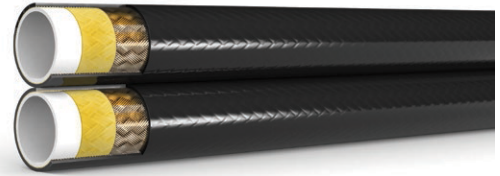
Working Temperature:
-40°C to +100°C, Not to Exceed
+70°C for Air & Water based fluids

Maximum Working Pressure:
700 bar



700 bar Jacking Hose, Per Metre

0346						
EH-700-04	1/4"	12.7	700	70	2758	13.30
EH-700-06	3/8"	18.8	700	100	2800	30.25



Twin Line 700 bar Jacking Hose, Per Metre

0346						
EH-700-04-TWIN	1/4"	12.7	700	70	2758	30.60



NPT Male

0346		To Suit Hose I.D.	
EH-NPTM0404	1/4"	1/4"	14.00
EH-NPTM0604	3/8"	1/4"	14.00
EH-NPTM0606	3/8"	3/8"	14.00



NPT Female

0346		To Suit Hose I.D.	
EH-NPTF0404	1/4"	1/4"	14.00
EH-NPTF0606	3/8"	3/8"	14.00



BSPT Male

0346		To Suit Hose I.D.	
EH-BMT0404	1/4"	1/4"	14.00



BSPP Female

0346		To Suit Hose I.D.	
EH-BF0404	1/4"	1/4"	14.00
EH-BF0606	3/8"	3/8"	14.00

All hose fittings come complete with ferrule . Swage settings are available on Technical Data Sheet.