

# Series 25KA & Accessories



## Page Tech Sheet 514

Working Temperature :  
-20°C to +100°C  
Standard seal NBR

Maximum Static Working Pressure:  
PB 35 bar (500 PSI)



Interchangeability:  
Rectus 26, 1600, 1625,  
Cejn 320, JWL 520, 530  
Flow Rate:  
1800 L/Min

Material:  
Brass nickel plated  
Application:  
General purpose pneumatic coupling  
Euro standard design



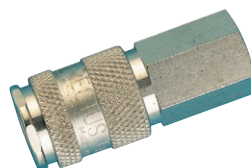
Actual Size

## Couplings



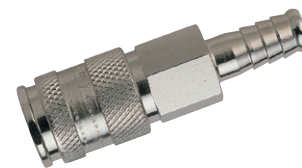
Male Thread, BSPT

2510				
25KAAK13MPN	1/4"	19	60	24.90
25KAAK17MPN	3/8"	19	60	22.60
25KAAK21MPN	1/2"	22	61	27.05



Female Thread, BSPP

2510				
25KAIW13MPN	1/4"	19	56	22.60
25KAIW17MPN	3/8"	19	55	22.95
25KAIW21MPN	1/2"	24	58	26.70



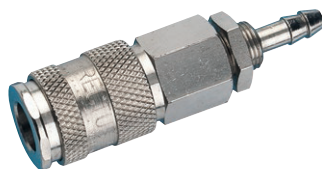
Hose Tail

2510	To Suit Hose I.D.			
25KATF06MPN	6mm (1/4")	19	74	22.60
25KATF08MPN	8mm (5/16")	19	74	22.60
25KATF09MPN	9mm	19	74	22.85
25KATF10MPN	10mm (3/8")	19	74	22.85
25KATF13MPN	13mm (1/2")	19	74	23.70



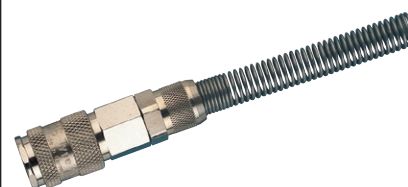
Quick Fit Tube Connection

2510	To Fit Tube Size mm			
25KAKO08MPN	6 x 8	19	60	32.00



Panel Mount, Standard Hose Tail

2510	To Suit Hose I.D.			
25KATS06MPN	6mm (1/4")	19	76	37.10
25KATS08MPN	8mm (5/16")	19	80	44.60
25KATS10MPN	10mm (3/8")	19	87	44.05



Quick Fit Tube Connection with Spring Guard

2510	To Fit Tube Size mm			
25KAKK08MPN	6 x 8	19	144	37.75
25KAKK10MPN	8 x 10	19	155	37.75

Other materials, seals and finishes available on request, please contact our technical department for further details.