

Air Preparation

Page Tech Sheet3060



Working Temperature:
-5°C to +60°C

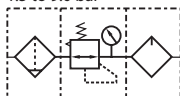


Maximum Working Pressure:
10 bar

40 Micron fitted as standard
Auto or Semi-Auto Drain fitted as standard
Guarded Bowl Protection on Series 300 & 400

200 Series Filter + Regulator + Lubricator Combination Units

Operating Pressure
1.5 to 9.0 bar

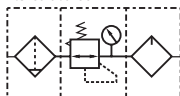


Semi-Auto Drains, supplied with Mounting Bracket & 10 bar Gauge, BSPP

0338				£
KCS200-06-F-3	1/8"	3000	121.95	
KCS200-08-F-3	1/4"	3000	121.95	

300 Series Filter + Regulator + Lubricator Combination Units

Operating Pressure
1.5 to 9.0 bar



Auto Drain, supplied with Mounting Bracket & 10 bar Gauge, BSPP

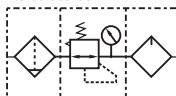
0338				£
KCS300-08-A-F-3	1/4"	4000	216.55	
KCS300-10-A-F-3	3/8"	4000	216.55	
KCS300-15-A-F-3	1/2"	4000	216.55	

Semi-Auto Drains, supplied with Mounting Bracket & 10 bar Gauge, BSPP

0338				£
KCS300-08-F-3	1/4"	4000	205.00	
KCS300-10-F-3	3/8"	4000	205.00	
KCS300-15-F-3	1/2"	4000	205.00	

400 Series Filter + Regulator + Lubricator Combination Units

Operating Pressure
1.5 to 9.0 bar



Auto Drain, supplied with Mounting Bracket & 10 bar Gauge, BSPP

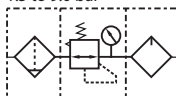
0338				£
KCS400-10-A-F-3	3/8"	6000	279.85	
KCS400-15-A-F-3	1/2"	6000	279.85	

Semi-Auto Drains, supplied with Mounting Bracket & 10 bar Gauge, BSPP

0338				£
KCS400-10-F-3	3/8"	6000	276.65	
KCS400-15-F-3	1/2"	6000	276.65	

600 Series Filter + Regulator + Lubricator Combination Units

Operating Pressure
1.5 to 9.0 bar



Auto Drain, supplied with Mounting Bracket & 10 bar Gauge, BSPP

0338				£
KCS600-20-A-F-3	3/4"	9000	650.55	
KCS600-25-A-F-3	1"	9000	650.55	

Semi-Auto Drains, supplied with Mounting Bracket & 10 bar Gauge, BSPP

0338				£
KCS600-20-F-3	3/4"	9000	550.20	
KCS600-25-F-3	1"	9000	550.20	

All KELM[™] Regulators can now be adapted to use either a 40mm or 50mm round face gauge with the new KELM Gauge Adaptor. See page 514