



Working Temperature:
-5°C to +60°C

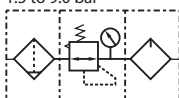


Maximum Working
Pressure:
10 bar

40 Micron fitted as standard
Auto or Semi-Auto Drain fitted as standard
Guarded Bowl Protection on Series 300 & 400

200 Series Filter/Regulator + Lubricator Combination Units

Operating Pressure
1.5 to 9.0 bar



Semi-Auto Drains, supplied with
Mounting Bracket & 10 bar Gauge, BSPP

0338



KFCS200-06-F-3
KFCS200-08-F-3

1/8"
1/4"

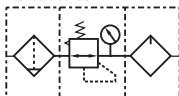
3000
3000

90.90
90.90



300 Series Filter/Regulator + Lubricator Combination Units

Operating Pressure
1.5 to 9.0 bar



Auto Drain, supplied with
Mounting Bracket & 10 bar Gauge, BSPP

0338



KFCS300-08-A-F-3
KFCS300-10-A-F-3
KFCS300-15-A-F-3

1/4"
3/8"
1/2"

4000
4000
4000

199.15
199.15
199.15



Semi-Auto Drains, supplied with
Mounting Bracket & 10 bar Gauge, BSPP

0338



KFCS300-08-F-3
KFCS300-10-F-3
KFCS300-15-F-3

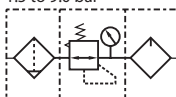
1/4"
3/8"
1/2"

4000
4000
4000

165.10
165.10
165.10

400 Series Filter/Regulator + Lubricator Combination Units

Operating Pressure
1.5 to 9.0 bar



Auto Drain, supplied with
Mounting Bracket & 10 bar Gauge, BSPP

0338



KFCS400-10-A-F-3
KFCS400-15-A-F-3

3/8"
1/2"

6000
6000

265.60
265.60



Semi-Auto Drains, supplied with
Mounting Bracket & 10 bar Gauge, BSPP

0338



KFCS400-10-F-3
KFCS400-15-F-3

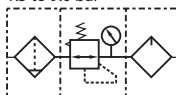
3/8"
1/2"

6000
6000

254.35
254.35

600 Series Filter/Regulator + Lubricator Combination Units

Operating Pressure
1.5 to 9.0 bar



Auto Drain, supplied with
Mounting Bracket & 10 bar Gauge, BSPP

0338



KFCS600-20-A-F-3
KFCS600-25-A-F-3

3/4"
1"

9000
9000

533.55
533.55



Semi-Auto Drains, supplied with
Mounting Bracket & 10 bar Gauge, BSPP

0338



KFCS600-20-F-3
KFCS600-25-F-3

3/4"
1"

9000
9000

454.00
454.00