

# Air Preparation



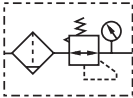
Working Temperature:  
-5°C to +60°C

Maximum Working Pressure:  
10 bar

40 Micron fitted as standard  
Auto or Semi-Auto Drain fitted as standard  
Guarded Bowl Protection on Series 300 & 400

## 200 Series Filter/Regulators

Operating Pressure  
1.5 to 9.0 bar

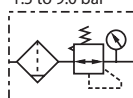


Semi-Auto Drains, supplied with  
Mounting Bracket & 10 bar Gauge, BSPP

0338			
KFRS200-06-F-3	1/8"	3000	51.30
KFRS200-08-F-3	1/4"	3000	51.30

## 400 Series Filter/Regulators

Operating Pressure  
1.5 to 9.0 bar

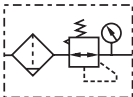


Auto Drain, supplied with  
Mounting Bracket & 10 bar Gauge, BSPP

0338			
KFRS400-10-A-F-3	3/8"	6000	163.40
KFRS400-15-A-F-3	1/2"	6000	163.40

## 300 Series Filter/Regulators

Operating Pressure  
1.5 to 9.0 bar



Auto Drain, supplied with  
Mounting Bracket & 10 bar Gauge, BSPP

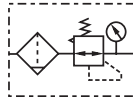
0338			
KFRS300-08-A-F-3	1/4"	4000	111.75
KFRS300-10-A-F-3	3/8"	4000	111.75
KFRS300-15-A-F-3	1/2"	4000	111.75

Semi-Auto Drains, supplied with  
Mounting Bracket & 10 bar Gauge, BSPP

0338			
KFRS400-10-F-3	3/8"	6000	152.85
KFRS400-15-F-3	1/2"	6000	152.85

## 600 Series Filter/Regulators

Operating Pressure  
1.5 to 9.0 bar



Auto Drain, supplied with  
Mounting Bracket & 10 bar Gauge, BSPP

0338			
KFRS600-20-A-F-3	3/4"	9000	315.85
KFRS600-25-A-F-3	1"	9000	315.85

Semi-Auto Drains, supplied with  
Mounting Bracket & 10 bar Gauge, BSPP

0338			
KFRS600-20-F-3	3/4"	9000	309.50
KFRS600-25-F-3	1"	9000	309.50