

Manual & Mechanical Valves



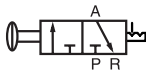
Working Temperature:
-20°C to +70°C

Maximum Working Pressure:
8 bar

Medium: Clean Compressed Air, Filtered (40µm) & Lubricated
Material: Aluminium Alloy Seals: Nitrile

Manual 3/2 Way Valves

Tech Sheet 3032



Push/Pull, BSPP

0335



CKL110-06	1/8"	48.45
CKL210-08	1/4"	66.30
CKL310-10	3/8"	94.20

Tech Sheet 3038



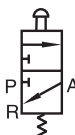
Push Button (Shrouded),
1/8" BSPP

0335



KSCPF-06-B	Black	56.95
KSCPF-06-G	Green	56.95
KSCPF-06-R	Red	56.95

Tech Sheet 3038



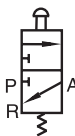
Push Button (External),
1/8" BSPP

0335



KSCPP-06-B	Black	56.95
KSCPP-06-G	Green	56.95
KSCPP-06-R	Red	56.95

Tech Sheet 3038



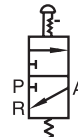
Palm Button,
1/8" BSPP

0335



KSCPM-06-B	Black	56.95
KSCPM-06-G	Green	56.95
KSCPM-06-R	Red	56.95

Tech Sheet 3038



Palm Button, Latching, 1/8" BSPP

0335



KSCPL-06-R	Red	58.00
------------	-----	-------

Tech Sheet 3038



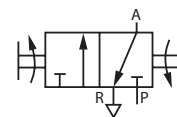
Lever/Lever, 1/8" BSPP

0335



KSY-06		58.00
--------	--	-------

Tech Sheet 3038



Switch, 1/8" BSPP

0335



KSCHS-06-B	Black	61.35
KSCHS-06-G	Green	61.35
KSCHS-06-R	Red	61.35