

Manual & Mechanical Valves



Working Temperature:
-20°C to +70°C

Mechanical 3/2 Way Valves

Tech Sheet
3038

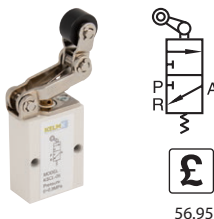


Maximum Working Pressure:
8 bar

One Way Roller Lever, 1/8" BSPP

0335

KSCL-06



56.95

Tech Sheet
3038

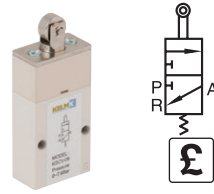


Maximum Working Pressure:
8 bar

Roller, 1/8" BSPP

0335

KSCV-06



56.95

Tech Sheet
3038

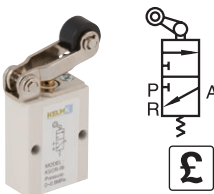


Maximum Working Pressure:
8 bar

Roller Lever, 1/8" BSPP

0335

KSCR-06



56.95

Tech Sheet
3038

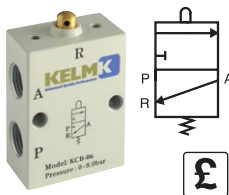


Maximum Working Pressure:
8 bar

Plunger, 1/8" BSPP

0335

KCB-06



44.65

Tech Sheet
10061

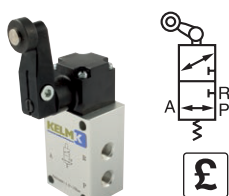


Maximum Working Pressure:
10 bar

Roller/Spring, BSPP

0335

ZMCR-06-W



101.70

Tech Sheet
10061

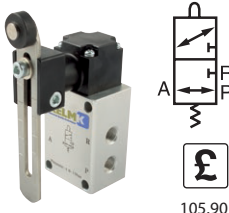


Maximum Working Pressure:
10 bar

Adjustable Roller/
Spring, BSPP

0335

ZMCJ-06-W



105.90

Tech Sheet
10061



Maximum Working Pressure:
10 bar

Antenna/Spring, BSPP

0335

ZMCP-06-W



1/8"



105.90

Manual 4/2 Way Valves

Tech Sheet
3033

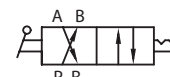


Maximum Working Pressure:
10 bar

Lever/Lever, BSPP

0335

DKHV210-06-S	1/8"	89.25
DKHV310-08-S	1/4"	109.70
DKHV310-10-S	3/8"	109.70
DKHV410-15-S	1/2"	158.60
DKHV410-20-S	3/4"	158.60



Manual 4/3 Way Valves

Tech Sheet
3033

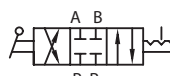


Maximum Working Pressure:
10 bar

Lever/Lever/Lever (Fully Sealed Mid Position), BSPP

0335

DKHV230-C-06-S	1/8"	89.25
DKHV330-C-08-S	1/4"	109.70
DKHV330-C-10-S	3/8"	109.70
DKHV430-C-15-S	1/2"	158.60
DKHV430-C-20-S	3/4"	158.60



5. KELM™ Pneumatics

Hydraulics

Hydraulic Quick Release Couplings

Pneumatic Quick Release Couplings

Air Prep., Media, Monitor & Test

KELM™ Pneumatics

Pneumatic & Vacuum Equipment

Valves

Ring Main Systems

Adaptors & Fittings

Stainless Steel

Malleable Iron

Hose, Tubing & Couplings

Clamps & Clips

Sprays & Adhesives

Blow Guns, Vacuum & Nozzles

Pressure Wash, Fuelling & Lubrication

Air Tools & Compressor Equipment

Tools, Hardware & PPE