

Manual & Mechanical Valves



Working Temperature:
-20°C to +70°C

Manual 5/2 Way Valves

Tech Sheet
3034



Maximum Working Pressure:
8 bar



Push/Pull, BSPP

0335



DKL110-06	1/8"	62.70
DKL210-08	1/4"	73.15
DKL310-10	3/8"	104.10

Tech Sheet
3041



Maximum Working Pressure:
8 bar



Lever/Lever, BSPP

0335



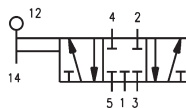
DKH210-06	1/8"	81.20
DKH310-08	1/4"	114.00
DKH310-10	3/8"	114.00

Manual 5/3 Way Valves

Tech Sheet
3045



Maximum Working Pressure:
8 bar



Lever/Lever/Lever,
Fully Sealed Mid
Position, BSPP

0335

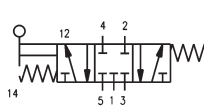


DKH230-C-06	1/8"	128.50
DKH230-C-08	1/4"	128.50
DKH330-C-10	3/8"	128.50

Tech Sheet
3046



Maximum Working Pressure:
8 bar



Lever/Spring/Lever,
Fully Sealed Mid
Position, BSPP

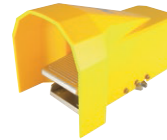
0335



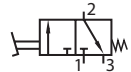
DKHA230-C-06	1/8"	123.55
DKHA230-C-08	1/4"	123.55
DKHA330-C-10	3/8"	123.55

Manual 5/2 Way Foot Valves

Tech Sheet
3055



Maximum Working Pressure:
8 bar



Foot/Spring, 1/4" BSPP

0335

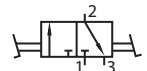


DKF210-08	-	122.00
DKF210-08G	Guarded	146.25

Tech Sheet
3055



Maximum Working Pressure:
8 bar



Foot/Foot, 1/4" BSPP

0335



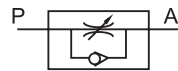
DKF210-08L	-	136.90
DKF210-08LG	Guarded	163.00

Flow Control Valves

Tech Sheet
3056



Working Pressure:
0.5 to 10 bar



Uni-directional, BSPP

0335



K100-06	1/8"	20.55
K200-08	1/4"	23.40
K300-10	3/8"	48.80
K300-15	1/2"	59.40

3/2 Hand Slide Valves

Tech Sheet
3035



Maximum Working Pressure:
10 bar



Hand Slide Valves,
BSPP

0335



KSV-06	1/8"	18.90
KSV-08	1/4"	21.40
KSV-10	3/8"	26.45
KSV-15	1/2"	31.15
KSV-20	3/4"	53.70
KSV-25	1"	78.00