

Solenoid Valves

Page Tech Sheet3040



Working Temperature:
-20°C to +70°C

Working Pressure:
1.5 to 8 bar

Medium: Clean Compressed Air. Filtered (40µm) & Lubricated
Material: Body: Aluminium Alloy Seals: Nitrile

Solenoid 5/2 Way Valves



Solenoid/Spring, BSPP

0335		£
DKV210-06	1/8"	73.45
DKV210-08	1/4"	77.35
DKV310-10	3/8"	104.85
DKV410-15	1/2"	122.00



Solenoid/Solenoid, BSPP

0335		£
DKV220-06	1/8"	100.90
DKV220-08	1/4"	109.80
DKV320-10	3/8"	132.20
DKV420-15	1/2"	243.90

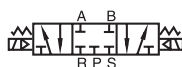


Working Temperature:
-20°C to +70°C

Working Pressure:
1.5 to 8 bar

Please contact our Technical Department if larger manifolds are required up to 16 stations.

Solenoid 5/3 Way Valves



Solenoid/Solenoid, Fully Sealed Mid Position, BSPP

0335		£
DKV230C-06	1/8"	132.60
DKV230C-08	1/4"	145.80
DKV330C-10	3/8"	168.40
DKV430C-15	1/2"	317.45



Solenoid/Solenoid, Centre Open Pressurised, BSPP

0335		£
DKV230P-06	1/8"	132.60
DKV230P-08	1/4"	145.80
DKV330P-10	3/8"	168.40
DKV430P-15	1/2"	185.40



Solenoid/Solenoid, Supply Sealed Mid Position, BSPP

0335		£
DKV230E-06	1/8"	132.60
DKV230E-08	1/4"	145.80
DKV330E-10	3/8"	168.40
DKV430E-15	1/2"	185.40

You might also need...



Nickel Plated
Brass Adaptors
& Silencers



...on pages 661-668