

One Touch NPT Plastic Push-in Fittings, Imperial



Page Tech Sheet 1964

Working Temperature:
Brass: 0°C to +60°C
Acetal: 0°C to +60°C

Maximum Working Pressure:
10 bar (150 psi)

Media:
Air & vacuum only.

Negative Pressure:
-750mm Hg (10Torr)

Male Studs



Male Thread (Hex Body), NPT

	1060	OD	Wavy	£
Hydraulics	2110-7800	1/8"	1/8"	2.80
	2110-7826	1/8"	1/4"	2.50
	2110-7842	5/32"	1/8"	1.90
Hydraulic Quick Release Couplings	2110-7859	5/32"	1/4"	2.25
	2110-7875	3/16"	1/8"	2.40
	2110-7909	3/16"	1/4"	2.25
Pneumatic Quick Release Couplings	2110-7925	3/16"	3/8"	3.25
	2110-7941	1/4"	1/8"	2.80
Air Prep, Media, Monitor & Test	2110-7958	1/4"	1/4"	2.80
	2110-7966	1/4"	3/8"	4.00
	2110-7974	5/16"	1/8"	2.25
	2110-7982	5/16"	1/4"	2.40
KELM™ Pneumatics	2110-7990	5/16"	3/8"	3.35
	2110-8006	3/8"	1/8"	3.70
Pneumatic & Vacuum Equipment	2110-8014	3/8"	1/4"	3.60
	2110-8022	3/8"	1/2"	4.90
	2110-8030	3/8"	3/4"	5.00
Valves	2110-8063	1/2"	1/4"	5.30
	2110-8071	1/2"	3/8"	5.15
Ring Main Systems	2110-8089	1/2"	1/2"	6.10

Male Thread (Hex Body), UNF

	1060	OD	Wavy	£
Adaptors & Fittings	2110-7776	1/8"	10-32	2.25
Stainless Steel	2110-7834	5/32"	10-32	2.25
Malleable Iron	2110-7933	1/4"	10-32	2.80



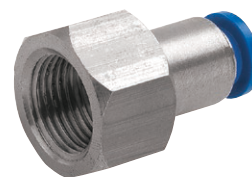
Male Thread (Round), NPT

	1060	OD	Wavy	£
Hydraulics	2110-8105	1/8"	1/8"	2.45
	2110-8113	1/8"	1/4"	2.35
	2110-8139	5/32"	1/8"	2.25
	2110-8147	5/32"	1/4"	2.95
	2110-8188	3/16"	1/8"	2.90
	2110-8204	3/16"	1/4"	2.35
	2110-8220	3/16"	3/8"	3.35
	2110-8246	1/4"	1/8"	2.45
	2110-8253	1/4"	1/4"	2.95
	2110-8279	1/4"	3/8"	3.35
	2110-8287	5/16"	1/8"	2.35
	2110-8295	5/16"	1/4"	2.50
	2110-8303	5/16"	3/8"	3.25
	2110-8311	3/8"	1/8"	3.35
	2110-8329	3/8"	1/4"	4.35
	2110-8337	3/8"	3/8"	6.15
	2110-8345	3/8"	1/2"	6.35
	2110-8352	1/2"	1/4"	5.00
	2110-8360	1/2"	3/8"	6.35
	2110-8378	1/2"	1/2"	6.35

Male Thread (Round), UNF

	1060	OD	Wavy	£
Adaptors & Fittings	2110-8097	1/8"	10-32	2.25
Stainless Steel	2110-8121	5/32"	10-32	2.25
Malleable Iron	2110-8154	3/16"	10-32	2.25
	2110-8238	1/4"	10-32	2.40

Female Studs



Female Thread, NPT

	1060	OD	Wavy	£
Hydraulics	2110-8386	1/8"	1/8"	3.35
	2110-8394	1/8"	1/4"	3.35
	2110-8402	5/32"	1/8"	3.35
	2110-8410	5/32"	1/4"	2.55
	2110-8428	3/16"	1/8"	2.90
	2110-8436	3/16"	1/4"	2.95
	2110-8444	1/4"	1/8"	3.35
	2110-8451	1/4"	1/4"	3.95
	2110-8469	1/4"	3/8"	3.55
	2110-8477	5/16"	1/8"	2.95
	2110-8485	5/16"	1/4"	3.95
	2110-8493	5/16"	3/8"	3.55
	2110-8501	5/16"	1/2"	5.85
	2110-8519	3/8"	1/8"	3.95
	2110-8527	3/8"	1/4"	5.20
	2110-8535	3/8"	3/8"	3.95
	2110-8543	3/8"	1/2"	8.15
	2110-8550	1/2"	1/4"	6.05
	2110-8568	1/2"	3/8"	6.05
	2110-8576	1/2"	1/2"	8.15

You might also need...



Nylon Tubing



...on page 681