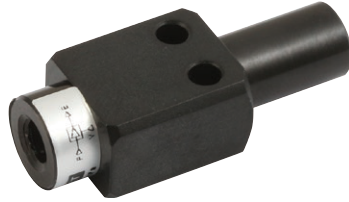


Vacuum Ejectors

- Energy saving
- Compact design

Working Temperature:
-0°C to +60°C
No Freezing

Working Pressure:
3 to 6 bar



Tech Sheet 10684

KCCV, Metric Thread

0420		Max Suction l/min	Air Consumption l/Min	Max Vacuum Pressure kPa	£
KCCV-04	M5	2.5	7.1	85	26.30

- Long life - no moving parts, simple construction
- Several nozzle sizes available - from low to high flow

Working Pressure :
1 to 6 bar



Tech Sheet 10685

KCV, BSPP Thread

0420		Max Suction l/min	Air Consumption l/Min	Max Vacuum Pressure kPa	Supply Pressure bar	£
KCV-10-R	1/8"	27	44	91.8	5	18.15
KCV-10-L	1/8"	36	44	57.2	5	18.15
KCV-15-R	1/4"	63	100	91.8	5	28.30
KCV-15-L	1/4"	95	100	57.2	5	28.30
KCV-20-L	1/2"	165	180	57.2	5	40.40
KCV-25-L	3/4"	250	265	57.2	5	80.85
KCV-30-R	3/4"	225	385	91.8	5	116.20
KCV-30-L	3/4"	350	385	57.2	5	116.20

KCV, BSPP Thread, Low Supply

0420		Max Suction l/min	Air Consumption l/Min	Max Vacuum Pressure kPa	Supply Pressure bar	£
KCV-15-HR	1/4"	54	100	90.6	3.5	18.15



Tech Sheet 10685

KCV with Adjustable Switch, BSPP Thread

0420		Max Suction l/min	Air Consumption l/Min	Max Vacuum Pressure kPa	Supply Pressure bar	£
KCV-05-SK	1/8"	6	13	86.6	5	55.60
KCV-10-SK	1/8"	27	44	91.8	5	50.50
KCV-15-SK	1/4"	63	100	91.8	5	54.55
KCV-25-SK	3/4"	160	265	91.8	5	121.25

Working Pressure :
2 to 6 bar



Tech Sheet 10805

KHCV, BSPP Thread

0420		Max Suction l/min	Air Consumption l/Min	Max Vacuum Pressure kPa	Supply Pressure bar	£
KHCV-20S	1/8"	25	44	90.6	3.5	80.85

- Hydraulics
- Hydraulic Quick Release Couplings
- Pneumatic Quick Release Couplings
- Air Prep, Media, Monitor & Test
- KELM™ Pneumatics
- Pneumatic & Vacuum Equipment
- Valves
- Ring Main Systems
- Adaptors & Fittings
- Stainless Steel
- Malleable Iron
- Hose, Tubing & Couplings
- Clamps & Clips
- Sprays & Adhesives
- Blow Guns, Vacuum & Nozzles
- Pressure Wash, Fuelling & Lubrication
- Air Tools & Compressor Equipment
- Tools, Hardware & PPE