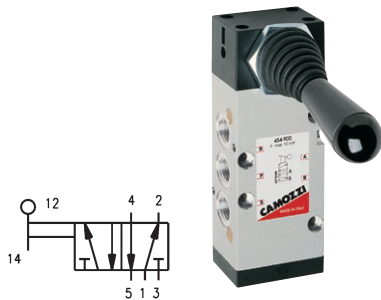


Directional Control Valves

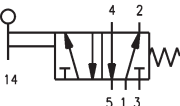


Series 3, 4 & VMS Manually Operated Valves



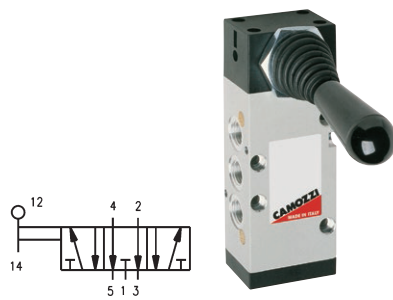
G1/4", 5/2 Lever Valve Bistable

0158		£
454 900	G1/4"	84.05



G1/4", 5/2 Lever Valve Monostable

0158		£
454 905	G1/4"	84.05



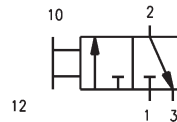
G1/4", 5/3 CO Lever Valve Bistable

0158		£
474 900	G1/4"	86.75



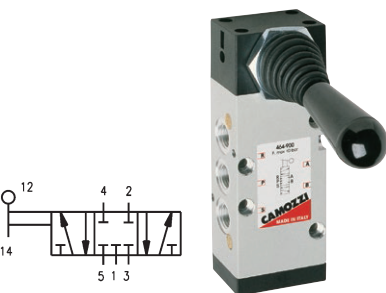
G1/4", 5/3 CO Lever Valve Monostable

0158		£
474 905	G1/4"	86.75



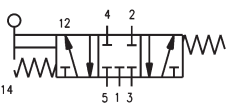
Slide Valves

0158		£
VMS 105 M5	M5	14.20
VMS 118 1/8	1/8"	15.40
VMS 114 1/4	1/4"	16.50
VMS 138 3/8	3/8"	21.25
VMS 112 1/2	1/2"	26.25
VMS 134 3/4	3/4"	35.20



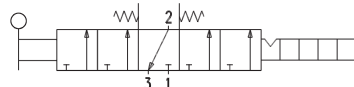
G1/4", 5/3 CC Lever Valve Bistable

0158		£
464 900	G1/4"	86.75



G1/4", 5/3 CC Lever Valve Monostable

0158		£
464 905	G1/4"	86.75



G1/8", 3/2 Joystick Lever Valve

0158		£
234 9054	G1/8"	363.60



For...



Direct Drive
& Belt Driven
Compressors



...see page 1729