

ISO 6432 Cylinders & Mountings



Page Tech Sheet 10316

6. Pneumatic & Vacuum Equipment

ISO 6432 Cylinders

- Magnetic piston as standard
- Generally conforms to ISO 6432
- High strength, double crimped end cap design
- Corrosion resistant

Medium: Compressed Air, Filtered, Lubricated or Non-lubricated
 Barrel: Stainless Steel (Austenitic)

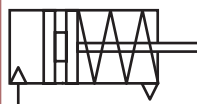
Standard: ISO 6432
 Piston Rod: Stainless Steel (Austenitic)

Buffer: Polyurethane
 Seals: Nitrile Rubber

Operation: Single Acting (Sprung in), Magnetic Piston, Buffer Cushioning
 End Covers: Clear Anodised Aluminium Alloy

Working Temperature: -10°C to +80°C

Working Pressure: 2 to 10 bar



Single Acting RM/28000/M

0036	mm	mm	mm	£
RM/28010/M/10	10	10	M5	38.00
RM/28010/M/25	10	25	M5	38.20
RM/28010/M/50	10	50	M5	39.70
RM/28020/M/10	20	10	G1/8	46.85
RM/28020/M/25	20	25	G1/8	49.00
RM/28020/M/50	20	50	G1/8	52.55
RM/28025/M/10	25	10	G1/8	52.85
RM/28025/M/25	25	25	G1/8	54.90
RM/28025/M/50	25	50	G1/8	58.35

- Nose mounting nut and piston rod locknut as standard
- Optional port arrangement for compact installation

Medium: Compressed Air, Filtered, Lubricated or Non-lubricated
 Piston Rod: Stainless Steel (Austenitic)

Standard: ISO 6432
 Wiper: Polyurethane

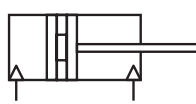
Buffer: Polyurethane
 Seals: Nitrile Rubber

Operation: Double Acting, Magnetic Piston with Buffer or Adjustable Cushioning
 End Covers: Clear Anodised Aluminium Alloy

Barrel: Stainless Steel (Austenitic)

Working Temperature: -10°C to +80°C

Working Pressure: 1 to 10 bar



Double Acting RM/8000/M

0036	mm	mm	mm	£
RM/8010/M/25	10	25	M5	40.35
RM/8010/M/50	10	50	M5	41.80
RM/8010/M/80	10	80	M5	43.60
RM/8010/M/100	10	100	M5	44.75
RM/8012/M/25	12	25	M5	42.70
RM/8012/M/50	12	50	M5	44.75
RM/8016/M/25	16	25	M5	46.05
RM/8016/M/50	16	50	M5	48.40
RM/8016/M/100	16	100	M5	53.10
RM/8020/M/25	20	25	G1/8	49.75
RM/8020/M/50	20	50	G1/8	52.10
RM/8020/M/80	20	80	G1/8	54.95
RM/8020/M/100	20	100	G1/8	56.85
RM/8025/M/25	25	25	G1/8	53.10
RM/8025/M/50	25	50	G1/8	55.45
RM/8025/M/80	25	80	G1/8	58.25
RM/8025/M/100	25	100	G1/8	60.15

ISO 6432 Mountings



Female Piston Rod Clevis

0036	mm	£
QM/8010/25	10	5.85
QM/8012/25	12 & 16	5.60
QM/8020/25	20	6.90
QM/8025/25	25	8.55



Piston Rod Eye

0036	mm	£
QM/8010/32	10	17.80
QM/8012/32	12 & 16	17.80
QM/8020/32	20	17.80
QM/8025/32	25	25.00



Clevis Foot Mounting

0036	mm	£
QM/947	10	26.20
QM/8012/24	12 & 16	8.10
QM/8020/24	20 & 25	8.10

Current: 500 mA (max)

Voltage: 10-30 AC 10-30 DC

Working Temperature: -20°C to +80°C



Magnetic Switch (QM45)

0036	mm	£
QM/45/LAP/5V	16-25	34.05