

Exhaust Flow Regulator/ Silencers & Air Fuses



Exhaust Flow Regulator/Silencers

- Compact, integral flow regulator and silencer units
- Captive regulating needle will not blow out when unscrewed
- Reduced dimensions

Medium:
Compressed Air, Filtered,
Lubricated or Non-
Lubricated, Inert Gases

Mounting:
Directly in the exhaust
port. Hexagon key
adjustment for flow
regulation (T20)

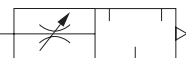
(T20)
Body & Washer:
Nylon
Adjusting Screw:
High Tensile Zinc
Electroplated Steel
Silencer:
Porous Polyethylene

(0405)
Body & Nut:
Brass
Needle:
Plastic
Silencer:
Sintered Bronze

Working Temperature:
-20°C to +80°C

Maximum Working Pressure:
10 bar

Tech Sheet
10259



Brass, BSPT

0036		£
04057100	1/8"	8.35
04057200	1/4"	41.35
04057300	3/8"	18.70
04057400	1/2"	19.00

Nylon, BSPT & Metric

0036		£
T20M0500	M5	5.35
T20C1800	1/8"	4.50
T20C2800	1/4"	5.85
T20C3800	3/8"	9.65
T20C4800	1/2"	10.95

Air Fuses

- Assists in complying with safety regulations
- Tamper proof
- Compact and safe design
- Low pressure drop
- Automatically resets after failure correction
- High corrosion resistance
- High air pressure rating

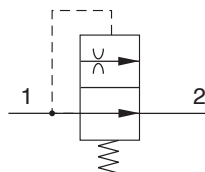
Medium:
Compressed Air, Filtered,
Lubricated and Non-
Lubricated, Inert Gases
Mounting:
In-line two way valve.
To be inserted between
fixed air supply and
flexible hose air line. See
guidelines for typical
installation

Type:
Fixed uni-directional
excess flow automatic
shut off valve
Body:
Aluminium
Spring:
Stainless Steel
Internal Parts:
Brass

Working Temperature:
-20°C to +80°C

At low temperature ensure fuse is not
subjected to icy conditions which may
prevent function

Working Pressure:
Maximum 16 bar, Minimum
according to hose length
Drop Pressure at Shut-off Flow:
0,14 or 0,3 bar



Tech Sheet
10510



BSPP

0036		Shut Off Flow Rate at 7 bar dm ³ /s ± 10%	£
T60C2890	1/4"	8.3	45.45
T60C3890	3/8"	19.14	49.25
T60C4890	1/2"	32.2	53.70
T60C6890	3/4"	48.3	79.95
T60C8890	1"	92	125.95

Shuttle Valves

- Allow two independent signal sources to be connected to a common pilot line
- Can be used to perform an 'OR' logic function
- Can be combined to operate from three or more sources
- Valves can be ganged together

Tech Sheet
20750



BSPP

0036		£
T65C1800	G1/8	26.60
T65C2800	G1/4	33.55

Hydraulics

Hydraulic
Quick Release
Couplings

Pneumatic
Quick Release
Couplings

Air Prep.,
Media, Monitor
& Test

KELM™
Pneumatics

Pneumatic
& Vacuum
Equipment

Valves

Ring Main
Systems

Adaptors
& Fittings

Stainless
Steel

Malleable
Iron

Hose,
Tubing &
Couplings

Clamps
& Clips

Sprays &
Adhesives

Blow Guns,
Vacuum &
Nozzles

Pressure Wash,
Fuelling &
Lubrication

Air Tools &
Compressor
Equipment

Tools,
Hardware
& PPE