

Fixture Clamps & Accessories

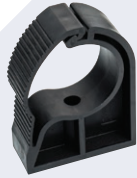
Clamps, Plastic

0368

To Suit
Tube
O.D., mm

£

2009 1022 00	20	1.75
2009 2022 00	25	1.85
2009 4022 00	40	3.25
2009 5022 00	50	3.95
2014 6022 00	67	5.90
2014 7022 00	84	9.30



Clamps, Steel

0368

To Suit
Tube
O.D., mm

£

2014 4122 00	40	3.95
2014 5122 00	50	4.45
2014 6122 00	67	5.15
2014 7122 00	84	5.75



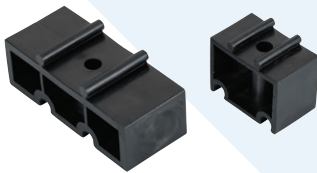
Clamp Spacer

0368

To Suit
Tube
O.D., mm

£

2009 0027 00	20-25	2.20
2009 0127 00	40-67	3.28



Universal Clamps

0368

OD
mm

£

2009 0135 00	25	0.80
2009 0235 00	50	1.10



For use with the wire suspension cable.

Universal Beam Suspender

0368

£

ID
mm

£

2009 0335 00	M6	8	0.55
--------------	----	---	------



Wire Suspension Cable

0368

DIA
mm

L
mm

£

2009 0150 00	8	1000	3.05
--------------	---	------	------



For use with the wire rope turn buckles.

Wire Suspension Clamps

0368

£

£

2009 0250 00	M8	0.75
2009 0250 01	M10	1.00



Wire Rope Turn Buckles

0368

£

£

2009 0850 00	M8	4.70
2009 0850 01	M10	6.05



For use with square steel and wall mounted brackets.

Wall Expansion Bolts

0368

£

£

2009 1550 00	M8 x 80	0.30
2009 1650 00	M8 x 120	0.55



Fixing Bolts

0368

£

£

2009 0665 00	M8 x 50	0.30
2009 1465 00	M8 x 60	0.35
2009 1565 00	M8 x 70	0.35



Complete with plastic wall plugs.

Self Tap Screws

0368

£

£

2009 1250 00	M5.5 x 60	0.25
2009 2250 00	M5.5 x 35	0.20
2009 2350 00	M6 x 80	0.25

