

**1** Hydraulics **3-284**

**2** Hydraulic Quick Release Couplings **285-320**

**3** Pneumatic Quick Release Couplings **321-406**

**4** Monitor & Test **407-446**

**5** Pneumatic & Vacuum **447-762**

**6** Push-in Fittings & Tubing **763-918**

**7** Valves & Actuation **919-1060**

**8** Ring Main **1061-1136**

**9** Hose Tails, Adaptors, Fittings & Manifolds **1137-1224**

**10** Stainless Steel **1225-1332**

**11** Malleable Iron **1333-1398**

**12** Hose, Couplings, Ducting & Hose Reels **1399-1510**

**13 Clips & Clamps** **1511-1558**

**14** Paint, Sprays & Adhesives **1559-1590**

**15** Blow Guns, Vacuum & Nozzles **1591-1616**

**16** Fuelling, Lubrication, Wash Down & Misting **1617-1696**

**17** Compressors & Air Tools **1697-1726**

**18** Hand Tools & PPE **1727-1765**

# SECTION 13

## Clips & Clamps

**13.01** Worm Drive Clamps & Clips **1511-1535**

**13.02** O Clips & Pliers **1536-1539**

**13.03** P Clips **1536-1539**

**13.04** Pipe Clips & Fixing Systems **1545-1551**

**13.05** Banding Systems & Cable Ties **1552-1555**

**13.06** Ferrules & Pipe Repair Couplings **1556-1558**

# SECTION 13

## 13.01 Worm Drive Clamps & Clips

- Worm Drive Hose Clamps & U Bolts
- Pipe Clamps
- Clamps & Clips Kits
- Clamps & Hose Clips
- Hose Clips
- Clip Packs
- Counter Dispensers
- Worm Drive Hose Clamps
- Clamps & Hose Clips
- Clamps, Clips & Fasteners



1511-1535

## 13.02 O Clips & Pliers

- O Clips & Pliers
- Hose Clamps
- Hose & Pipe Cleaning Kits
- Service Plugs



1536-1539

## 13.03 P Clips

- Pipe Clips & Tool Clips
- Clamps & Hose Clips
- Clips
- Clip Packs
- Clamps & Hose Clips



1540-1544

## 13.04 Pipe Clips & Fixing Systems

- Metric Pipe Clips & Back Plates
- BSP Pipe Clips & Back Plates
- Pipe Saddle Clips
- Pipe Fixings
- Pipe Clips & Fixing Systems



1545-1551

## 13.05 Banding Systems & Cable Ties

- Quick Release Band Straps & Banding
- Banding System & Tie Wraps
- Steel Strapping & Accessories



1552-1555

## 13.06 Ferrules & Pipe Repair Couplings

- Ferrules
- Pipe Repair Couplings
- Circlips Kits
- Tool Clips, Pen & Tool Holders
- Hose Crimper



1556-1558

## Hi-grip Mini Clamps

For fuel pipes and small hoses.

stainless steel



### Mild Steel

5559	Min Size mm	Max Size mm
505-9	7	9
505-10	8	10
505-11	9	11
505-12	10	12
505-13	11	13
505-14	12	14
505-15	13	15
505-16	14	16
505-17	15	17
505-18	16	18

Tech Sheet 20459

### Stainless Steel

5559	Min Size mm	Max Size mm
505-9SS	7	9
505-10SS	8	10
505-11SS	9	11
505-12SS	10	12
505-13SS	11	13
505-14SS	12	14
505-15SS	13	15
505-16SS	14	16
505-17SS	15	17
505-18SS	16	18

Tech Sheet 20459

## All Stainless Steel Worm Drive Hose Clamps

stainless steel

304 stainless steel.



### All Stainless Steel Worm Drive Hose Clamps

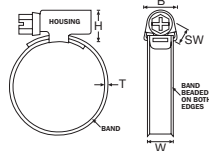
5555	Band Width	Min Size mm	Max Size mm
HCS12	9	8	12
HCS16	9	10	16
HCS20	9	12	20
HCS25	9	16	25
HCS32	9	20	32
HCS40	9	25	40
HCS50	9	32	50
HCS60	9	40	60
HCS70	9	50	70

Tech Sheet 20402

## Hose Clamps

**Material:** Band and Housing: AISI 430 stainless steel.  
Screw: V6 free plated carbon steel.

Dimensions:	9mm Band Width	12mm Band Width
Band Width (W):	9mm	12mm
Band Thickness (T):	0.6mm	0.7mm
Housing Width (B):	12mm	15mm
Housing Height (H):	11mm	11mm
Width across flats (SW):	7mm	7mm



### 9mm Band Width

5555	Min Size mm	Max Size mm	Size Ref
HC8-12	8	12	000
HC10-16	10	16	M00
HC12-20	12	20	00
HC16-25	16	25	0X
HC20-32	20	32	1A
HC25-40	25	40	1
HC32-50	32	50	2A
HC35-45	35	45	-
HC40-60	40	60	2

Tech Sheet 20401

### 12mm Band Width

5555	Min Size mm	Max Size mm	Size Ref
HC50-70	50	70	3
HC60-80	60	80	3X
HC70-90	70	90	4
HC80-100	80	100	4X
HC90-110	90	110	-
HC100-120	100	120	5
HC110-130	110	130	-
HC120-140	120	140	6 and 6X
HC130-150	130	150	-
HC140-160	140	160	7

Tech Sheet 20401

## Tri-torque Heavy-duty Clamps, 16mm Band

stainless steel



### Stainless Steel

5559	Min Size mm	Max Size mm
T850-175	25	44
T850-200	32	54
T850-250	44	67
T850-300	57	80
T850-350	70	92
T850-400	83	105
T850-500	108	130
T850-550	121	143
T850-600	133	156
T850-650	146	168
T850-800	184	206
T850-850	197	219

Tech Sheet 20462

## Quick Release Hose Clamps, 12.7mm Band

stainless steel



### Stainless Steel

5559	Min Size mm	Max Size mm
G76028	25	57
G76048	38	89
G76056	25	101
G76072	51	127
G76088	52	152
G76104	45	177
G76128	45	217
G76152	50	254
G76188	52	312
G76216	258	355
G76248	45	406
G76280	361	457
G76344	45	559

Tech Sheet 20460

# WORM DRIVE HOSE CLAMPS & U BOLTS



## Spiral Wrap Hose Clamps

Designed for spiral ducting hose, this clamp is unique to the market. It always has two points of contact, making it an ideal clamp for this style of hose.



### Right Hand (Clockwise) Wound

5559	ID mm
SWCRT-2	50
SWCRT-3	75
SWCRT-4	100
SWCRT-5	125
SWCRT-6	150

Tech Sheet 67958

### Left Hand (Anticlockwise) Wound

5559	ID mm
SWCLT-2	50
SWCLT-3	75
SWCLT-4	100
SWCLT-5	125
SWCLT-6	150

Tech Sheet 67958

## Spiral Clamps



### Right Hand (Clockwise) Wound

5555	ID
SCR-112	1.1/2"
SCR-2	2"
SCR-212	2.1/2"
SCR-3	3"
SCR-4	4"
SCR-5	5"
SCR-6	6"
SCR-12	12"

### Left Hand (Anticlockwise) Wound

5555	ID
SCL-212	2.1/2"
SCL-3	3"
SCL-5	5"
SCL-8	8"

## U Bolt Clamps



### Complete with Saddle, Mild Steel

5559	To Suit Tube OD mm
U780280	28
U780320	32
U780350	35
U780380	38
U780410	41
U780430	43
U780450	45
U780480	48
U780510	51
U780540	54
U780580	58
U780600	60
U780640	64
U780670	67
U780700	70
U780750	75
U780770	77
U780790	79
U780800	80
U780890	89
U780920	92
U780950	95
U781000	100
U781020	102
U781100	110
U781200	120
U781250	125

Tech Sheet 20463

## Easy Grip Hose Clamp



### Steel, 9mm Band Width

5555	Min Size mm	Max Size mm
EGHC8-12	8	12
EGHC10-16	10	16
EGHC12-20	12	20
EGHC16-25	16	25
EGHC20-32	20	32
EGHC25-40	25	40
EGHC32-50	32	50
EGHC35-45	35	45
EGHC40-60	40	60
EGHC50-70	50	70
EGHC60-80	60	80
EGHC70-90	70	90
EGHC80-100	80	100

Tech Sheet 20410



For Braided PVC Hose see page 1403



## Heavy-duty Steel Hose Clamps



### Zinc Yellow Plated

5555	Min Size mm	Max Size mm
HDSHS-1719	17	19
HDSHS-2022	20	22
HDSHS-2325	23	25
HDSHS-2628	26	28
HDSHS-2931	29	31
HDSHS-3235	32	35
HDSHS-3639	36	39
HDSHS-4043	40	43
HDSHS-4447	44	47
HDSHS-4851	48	51
HDSHS-5255	52	55
HDSHS-5659	56	59
HDSHS-6063	60	63
HDSHS-6467	64	67
HDSHS-6873	68	73
HDSHS-7479	74	79
HDSHS-8085	80	85
HDSHS-8691	86	91
HDSHS-9297	92	97
HDSHS-98103	98	103
HDSHS-104112	104	112
HDSHS-113121	113	121
HDSHS-122130	122	130
HDSHS-131139	131	139
HDSHS-140148	140	148
HDSHS-149161	149	161
HDSHS-162174	162	174
HDSHS-175187	175	187
HDSHS-188200	188	200
HDSHS-201213	201	213
HDSHS-214226	214	226
HDSHS-227239	227	239
HDSHS-240252	240	252

Tech Sheet 20403

## Stainless Steel Superior Clamps



### Grade 304 Stainless Steel Band, Housing & Screw

5555	Min Size mm	Max Size mm
SHC17-19	17	19
SHC20-22	20	22
SHC23-25	23	25
SHC26-28	26	28
SHC29-31	29	31
SHC32-35	32	35
SHC36-39	36	39
SHC40-43	40	43
SHC44-47	44	47
SHC48-51	48	51
SHC52-55	52	55
SHC56-59	56	59
SHC60-63	60	63
SHC64-67	64	67
SHC68-73	68	73
SHC74-79	74	79
SHC80-85	80	85
SHC86-91	86	91
SHC92-97	92	97
SHC98-103	98	103
SHC104-112	104	112
SHC113-121	113	121
SHC122-130	122	130
SHC131-139	131	139
SHC140-148	140	148
SHC149-161	149	161
SHC162-174	162	174
SHC175-187	175	187
SHC188-200	188	200
SHC201-213	201	213
SHC214-226	214	226
SHC227-239	227	239
SHC240-252	240	252

Tech Sheet 20405

## Constant Tension Clamps



### 304 Stainless Steel, 15.8mm Band Width

5555	Min Size mm	Max Size mm
CTC25-45	25	45
CTC32-54	32	54
CTC45-67	45	67
CTC57-79	57	79
CTC70-92	70	92
CTC83-105	83	105
CTC95-117	95	117
CTC108-130	108	130
CTC121-143	121	143
CTC133-155	133	155
CTC146-168	146	168
CTC184-206	184	206

Tech Sheet 20409



For **Black Nylon Ply Steam Hose**  
see page **1482**



## Assorted Kits

**Contents:**

Size	Quantity
8-12mm	14
10-16mm	10
12-22mm	10
16-27mm	8
20-32mm	7
25-40mm	6



### Hose Clamps

5559	Material
HC-KIT-MS	Mild Steel
HC-KIT-SS	Stainless Steel
Tech Sheet 20468	

**Contents:**

Size	Quantity
7-9mm	21
8-10mm	20
9-11mm	15
10-12mm	15
11-13mm	14
12-14mm	8
13-15mm	10
15-17mm	7
16-18mm	6



### Mini Hose Clamps

5559	Material
HCMINI-KIT-MS	Mild Steel
HCMINI-KIT-SS	Stainless Steel
Tech Sheet 20468	

## Screwdriver



5555
HC1



For **Heavy-duty Tube Cutter**  
see page 905



# CLAMPS & HOSE CLIPS



## INDUSTRY RECOMMENDED SYMBOLS



Agricultural



Food



Ventilation



Electrical



Oil/Gas



Industrial



Marine



Hardware/DIY



Automotive

## Jubilee® Hose Clips

- Precision engineered for quality, Jubilee clips are Kitemark approved to BS 5315:1991 and manufactured under the BS EN ISO 9002 quality system accepted by the British Standards Institution
- The mild steel range is zinc plated for corrosion resistance and the stainless steel range is all 304 (A2) material



stainless steel

### Mild Steel, Zinc Plated

6666	Size No	Min Size mm	Max Size mm
000-MS	000	9.5	12
M00-MS	M00	11	16
00-MS	00	13	20
0-MS	0	16	22
0X-MS	0X	18	25
1A-MS	1A	22	30
1-MS	1	25	35
1X-MS	1X	30	40
1M-MS	1M	32	45
2A-MS	2A	35	50
2-MS	2	40	55
2X-MS	2X	45	60
3-MS	3	55	70
3X-MS	3X	60	80
4-MS	4	70	90
4X-MS	4X	85	100
5-MS	5	90	120
6-MS	6	110	140
6X-MS	6X	120	150
7-MS	7	135	165
7 1/2-MS	7.1/2	158	190
8 1/2-MS	8.1/2	184	216
9 1/2-MS	9.1/2	210	242
10 1/2-MS	10.1/2	235	267
11 1/2-MS	11.1/2	260	292
12 1/2-MS	12.1/2	286	318

Tech Sheet 591

### 304 Stainless Steel

6666	Size No	Min Size mm	Max Size mm
000-SS	000	9.5	12
M00-SS	M00	11	16
00-SS	00	13	20
0-SS	0	16	22
0X-SS	0X	18	25
1A-SS	1A	22	30
1-SS	1	25	35
1X-SS	1X	30	40
1M-SS	1M	32	45
2A-SS	2A	35	50
2-SS	2	40	55
2X-SS	2X	45	60
3-SS	3	55	70
3X-SS	3X	60	80
4-SS	4	70	90
4X-SS	4X	85	100
5-SS	5	90	120
6-SS	6	110	140
6X-SS	6X	120	150
7-SS	7	135	165
7 1/2-SS	7.1/2	158	190
8 1/2-SS	8.1/2	184	216
9 1/2-SS	9.1/2	210	242
10 1/2-SS	10.1/2	235	267
11 1/2-SS	11.1/2	260	292
12 1/2-SS	12.1/2	286	318

Tech Sheet 591

### Boxed Mild Steel, 10 Clips per Box

6666	Size No	Min Size mm	Max Size mm
000-MS-BOX	000	9.5	12
M00-MS-BOX	M00	11	16
00-MS-BOX	00	13	20
0-MS-BOX	0	16	22
0X-MS-BOX	0X	18	25
1A-MS-BOX	1A	22	30
1-MS-BOX	1	25	35
1X-MS-BOX	1X	30	40
1M-MS-BOX	1M	32	45
2A-MS-BOX	2A	35	50
2-MS-BOX	2	40	55
2X-MS-BOX	2X	45	60
3-MS-BOX	3	55	70

Tech Sheet 591

### Jubilee® Clipdrivers



6666 Length mm

2025-3753

95

Tech Sheet 1940





# CLAMPS & HOSE CLIPS

## Jubilee® Light Range Clips

With a narrower band than the original Jubilee® clip, this lightweight clip is designed to offer an excellent seal at slightly lower torques.

The Jubilee® Light Range is manufactured to DIN 3017 and, like the original Jubilee® clip, they are continuously threaded to enable extra flexibility when adjusting to the required size.

This clip is most suited to applications where space or weight is restricted and is often used in car and light commercial vehicle applications.



### Mild Steel, Zinc Plated, W1

6666	Min Size mm	Max Size mm
LR022MS	12	22
LR032MS	22	32
LR040MS	25	40
LR050MS	32	50
LR060MS	40	60
LR070MS	50	70
LR080MS	60	80
LR090MS	70	90
LR100MS	80	100
LR110MS	90	110
LR120MS	100	120
LR130MS	110	130
LR140MS	120	140
LR150MS	130	150
LR160MS	140	160

Tech Sheet 60246



stainless steel



### 304 Stainless Steel, W4

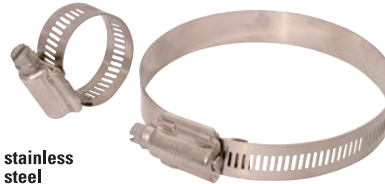
6666	Min Size mm	Max Size mm
LR022SS	12	22
LR032SS	22	32
LR040SS	25	40
LR045SS	30	45
LR050SS	32	50
LR060SS	40	60
LR070SS	50	70
LR080SS	60	80
LR090SS	70	90
LR100SS	80	100
LR110SS	90	110
LR120SS	100	120
LR140SS	120	140
LR150SS	130	150
LR160SS	140	160

Tech Sheet 60246

## Jubilee® Stainless Steel High Torque Hose Clips

Jubilee® high torque clips for applications that require additional high levels of tightening torque; twice the tightening torque of standard worm drive clips.

- Recommended tightening torque: 17Nm (150in-lb)
- All stainless steel construction



stainless steel

### Jubilee® 304 Stainless Steel, High Torque Hose Clips

6666	Min Size mm	Max Size mm
JHT35	20	35
JHT40	25	40
JHT45	25	45
JHT50	30	50
JHT70	40	70
JHT80	60	80
JHT95	70	95
JHT100	80	100
JHT120	90	120
JHT140	110	140
JHT160	130	160
JHT180	150	180
JHT200	170	200
JHT220	190	220
JHT240	210	240
JHT260	230	260
JHT280	250	280
JHT300	270	300
JHT320	290	320
JHT340	310	340
JHT360	330	360
JHT380	350	380
JHT400	370	400
JHT420	390	420
JHT440	410	440
JHT480	450	480
JHT500	470	500

Tech Sheet 1941

## Jubilee® Stainless Steel High Torque Hose Clips

Jubilee® High Torque clips are made of all 304 or 316 stainless steel, with a two-part housing and cut-through and keeping the band straight at the point of engagement and fully engaging the screw thread, giving a superior tightening torque.

Although not suitable for use on soft hoses, where the high forces and the perforated band may cut into the hose; they are ideal where a high clamping force is required, and with a flexible band material, they can achieve a high level of friction even against smooth surfaces.



### Jubilee® 316 Stainless Steel, High Torque Hose Clips

6666	Min Size mm	Max Size mm
HT035SS316	20	35
HT040SS316	25	40
HT045SS316	25	45
HT050SS316	30	50
HT055SS316	35	55
HT060SS316	40	60
HT065SS316	45	65
HT070SS316	40	70
HT080SS316	60	80
HT095SS316	70	95
HT100SS316	80	100
HT120SS316	90	120
HT140SS316	110	140
HT160SS316	130	160
HT180SS316	150	180
HT200SS316	170	200
HT220SS316	190	220
HT240SS316	210	240
HT260SS316	230	260
HT280SS316	250	280
HT300SS316	270	300
HT320SS316	290	320
HT340SS316	310	340
HT360SS316	330	360
HT380SS316	350	380
HT400SS316	370	400
HT420SS316	390	420
HT440SS316	410	440
HT460SS316	430	460
HT480SS316	450	480
HT500SS316	470	500
HT520SS316	490	520





# CLAMPS & HOSE CLIPS



## Jubilee® Flexiband

Tool used to apply Jubilee® Flexiband bands and buckles.



### Flexiband Tool

6666	
FBT	Tech Sheet 68252

304 stainless steel banding and buckles, used for applications such as sign fixing where the tamper-proof nature of the product is of paramount importance.

stainless steel



### Flexiband Banding, 304 Stainless Steel, 30 Metre Lengths

6666	Band Width mm	Band Thickness mm
FB09B	9	0.65
FB13B	13	0.75
FB16B	16	0.75
FB19B	19	0.75

Tech Sheet 68252

stainless steel



### Flexiband Buckles, 304 Stainless Steel, Pack of 25

6666	Band Width mm
FB13H	13
FB19H	19

Tech Sheet 68252

## Jubilee® Juniors Nut & Bolt Clips

To suit petrol pipe, heaters and small bore hoses.



### Mild Steel, Zinc Plated

6666	Min Size mm	Max Size mm
NB0709	7	9
NB0810	8	10
NB0911	9	11
NB1012	10	12
NB1113	11	13
NB1214	12	14
NB1315	13	15
NB1416	14	16
NB1517	15	17
NB1618	16	18

Tech Sheet 10310

## Jubilee® Handy Packs

The most popular sizes of premium brand Jubilee® hose clips, individually boxed and handily packed in their own outer display carton.

Pack consists of ten of each size: 000, M00, 00, 0, OX, 1A, 1, 1X, 1M and 2A.



### Mild Steel, Zinc Plated

6666	
HP100MS	Tech Sheet 10584



### 304 Stainless Steel

stainless steel

6666	
HP100SS	

## Jubilee® Pocket Packs

Never again be caught out without that essential Jubilee® clip to complete the job. The compact container holds a useful selection of clips for all those necessary hose jointing applications as well as holding nuts and bolt clips for joining small bore hoses and petrol pipes.

Pack consists of four each of 00, 0, OX, NB0709 and NB1113, and two of each of 1 and 1X.



### Mild Steel, Zinc Plated

6666	
PPAUTO	

Working Temperature: -50°C to +150°C See data sheet for pack contents



### Pocket Pack, 32 Pieces

6666	Material
PP-MS	Mild Steel
PP-SS	304 Stainless Steel

Tech Sheet 60241



# CLAMPS & HOSE CLIPS



## Jubilee® Clip Dispensers

These essential dispensers are easily re-stockable and also carries the extremely useful Flexidriver tool for easy adjustment of Jubilee clips. This can be wall mounted or left free standing.

**Contents:**

Size	Quantity
000	10
M00	10
00	10
0	10
OX	10
1A	10
1	10
1X	10
1M	10
2A	10
Jubilee	3
Flexidriver®	



### Mild Steel, Zinc Plated

6666
CD-100MS



### 304 Stainless Steel

6666
CD-100SS

stainless steel

## Jubilee® Workshop Pack

- Assorted Jubilee mild steel clips in a plastic re-usable box

**Contents:**

Size	Quantity
000	24
M00	32
00	28
0	13
OX	14
1A	12
1	13
1X	7



### Mild Steel

6666
HCP143
Tech Sheet 1938

stainless steel

### 304 Stainless Steel

6666
HCP143SS
Tech Sheet 1938

stainless steel

### 316 Stainless Steel

6666
HCP143SS316
Tech Sheet 1938

## Jubilee® Junior Assortment Pack

- 165 Assorted nut and bolt clips (for use on small bore hoses) in a plastic re-usable box

**Contents:**

Size	Quantity
07-09mm	25
08-10mm	25
09-11mm	25
10-12mm	30
11-13mm	30
12-14mm	30



### Mild Steel

6666
JA165
Tech Sheet 1938

stainless steel

### 304 Stainless Steel

6666
JA165SS
Tech Sheet 1938



# CLAMPS & HOSE CLIPS



## Jubilee® Superclamps

Jubilee® Superclamps are manufactured in mild steel zinc plated, all 304 stainless and all 316 stainless steel and the later are predominantly suitable for applications where high corrosion resistance is required. These powerful clamps are ideal for marine and offshore oil and gas applications, as well as the food and chemical industries.

These clamps can also be used in place of SAE J1508 type TB or T-Bolt style clamps.

Superclamps are particularly suitable for delivery and suction hoses requiring a very tight seal and agricultural applications, waste water extraction, mining, quarrying or in other sectors where a heavy-duty clamp is required.

- Single nut adjustment
- Smooth band protects hose
- Bridge piece ensures 360° seal
- Solid trunion maximises torque
- Assembly by manual or automatic tools
- Chromium VI free finish on all materials



### Mild Steel, Zinc Plated

6666	Min Size mm	Max Size mm
JSC19	17	19
JSC22	20	22
JSC25	23	25
JSC28	26	28
JSC31	29	31
JSC35	32	35
JSC39	36	39
JSC43	40	43
JSC47	44	47
JSC51	48	51
JSC55	52	55
JSC59	56	59
JSC63	60	63
JSC67	64	67
JSC73	68	73
JSC79	74	79
JSC85	80	85
JSC91	86	91
JSC97	92	97
JSC103	98	103
JSC112	104	112
JSC121	113	121
JSC130	122	130
JSC139	131	139
JSC148	140	148
JSC161	149	161
JSC174	162	174
JSC187	175	187
JSC200	188	200
JSC226	214	226
JSC239	227	239

Tech Sheet 590



stainless steel

### 304 Stainless Steel

6666	Min Size mm	Max Size mm
JSC19SS304	17	19
JSC22SS304	20	22
JSC25SS304	23	25
JSC28SS304	26	28
JSC31SS304	29	31
JSC35SS304	32	35
JSC39SS304	36	39
JSC43SS304	40	43
JSC47SS304	44	47
JSC51SS304	48	51
JSC55SS304	52	55
JSC59SS304	56	59
JSC63SS304	60	63
JSC67SS304	64	67
JSC73SS304	68	73
JSC79SS304	74	79
JSC85SS304	80	85
JSC91SS304	86	91
JSC97SS304	92	97
JSC103SS304	98	103
JSC112SS304	104	112
JSC121SS304	113	121
JSC130SS304	122	130
JSC139SS304	131	139
JSC148SS304	140	148
JSC161SS304	149	161
JSC174SS304	162	174
JSC187SS304	175	187
JSC200SS304	188	200
JSC213SS304	201	213
JSC226SS304	214	226
JSC239SS304	227	239

Tech Sheet 590



stainless steel

### 316 Stainless Steel

6666	Min Size mm	Max Size mm
JSC19SS316	17	19
JSC22SS316	20	22
JSC25SS316	23	25
JSC28SS316	26	28
JSC31SS316	29	31
JSC35SS316	32	35
JSC39SS316	36	39
JSC43SS316	40	43
JSC47SS316	44	47
JSC51SS316	48	51
JSC55SS316	52	55
JSC59SS316	56	59
JSC63SS316	60	63
JSC67SS316	64	67
JSC73SS316	68	73
JSC79SS316	74	79
JSC85SS316	80	85
JSC91SS316	86	91
JSC97SS316	92	97
JSC103SS316	98	103
JSC112SS316	104	112
JSC121SS316	113	121
JSC130SS316	122	130
JSC139SS316	131	139
JSC148SS316	140	148
JSC161SS316	149	161
JSC174SS316	162	174
JSC187SS316	175	187
JSC213SS316	201	213
JSC226SS316	214	226

Tech Sheet 590



For **Suction Hose**  
see page 1427





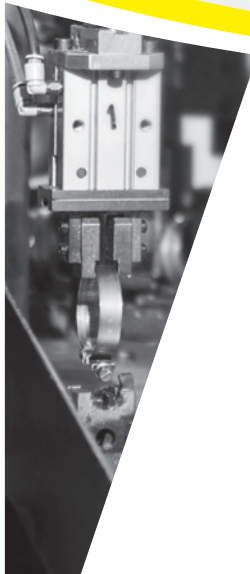
## ASFA HIGH TORQUE 16 mm bandwidth



No  
PERFORATIONS

Available  
in W3 / W4

Top  
PERFORMANCE



**SUPRA**  
heavy duty clamp



**EAR CLIPS**



**LEADERS  
IN  
INNOVATION  
AND  
QUALITY**



## Mikalor Hose Clamps & Clips

Mikalor is a leading European manufacturer of hose clamps and clips based in Barcelona, Spain. Famous for the market-leading Supra clamp, Mikalor manufactures an extensive range of DIN 3017 clamps which are IATF 16949 approved for automotive use, DIN 3016 P-clips as well as a growing range of constant tension clamps, spring clips, O-clips etc.

Mikalor was the first company to design and produce heavy-duty hose clamp, and since then the **Super clamp** has gone from strength to strength.

The high strength 8.8 grade steel nut and T-bolt mean that Super can be tightened up hard using many different kinds of tools, while the bevelled edges protect the hose from harm.

The Super clamp is in its element in agricultural applications, waste water extraction, mining, quarrying or in other sectors where a rugged yet competitively priced heavy-duty clamp is required.

**Material:**

**Band and bridge:** Stainless Steel X6Cr17 AISI-430

**Screw:** Qst 34-3 Steel (DIN 1.0213) 8.8 Grade Steel

**Finish:** Stainless Steel



### Super Heavy-duty Clamp

5556	Min Size mm	Max Size mm
SBC1719	17	19
SBC2022	20	22
SBC2325	23	25
SBC2628	26	28
SBC2931	29	31
SBC3235	32	35
SBC3639	36	39
SBC4043	40	43
SBC4447	44	47
SBC4851	48	51
SBC5255	52	55
SBC5659	56	59
SBC6063	60	63
SBC6467	64	67
SBC6873	68	73
SBC7479	74	79
SBC8085	80	85
SBC8691	86	91
SBC9297	92	97
SBC98103	98	103
SBC104112	104	112
SBC113121	113	121
SBC122130	122	130
SBC131139	131	139
SBC140148	140	148
SBC149161	149	161
SBC162174	162	174
SBC175187	175	187
SBC188200	188	200
SBC201213	201	213
SBC214226	214	226
SBC227239	227	239
SBC240252	240	252

Tech Sheet 1739

Due to its revolutionary swivelling bridge, the **Supra Clamp** can be mounted in the most awkward applications without having to remove the hose. It can be opened and fastened again when in place without dislodging any other parts of the clamp, making assembly much easier.

The high-strength bolt, designed and manufactured by Mikalor specifically for this clamp, together with the captive nut and spacer system allow you to clamp the most demanding of hose assemblies. This is the clamp of choice for professionals in the industrial hose, automotive and agricultural machinery sectors as well as in all industrial applications where an outstanding and above all reliable heavy-duty clamp is required.

**Material:**

**Band and bridge:** Stainless Steel X6Cr17 AISI-430

**Screw:** Qst 34-3 Steel (DIN 1.0213) 8.8 Grade Steel

**Finish:** Stainless Steel



### Supra Heavy-duty Clamp W2

5556	Min Size mm	Max Size mm
MS1901	17	19
MS1902	19	21
MS1903	21	23
MS1904	23	25
MS1905	25	27
MS1906	27	29
MS1907	29	31
MS1908	31	34
MS1909	34	37
MS1910	37	40
MS1911	40	43
MS1912	43	47
MS1913	47	51
MS1914	51	55
MS1915	55	59
MS1916	59	63
MS1917	63	68
MS1918	68	73
MS1919	73	79
MS1920	79	85
MS1921	85	91
MS1922	91	97
MS1923	97	104
MS1924	104	112

5556	Min Size mm	Max Size mm
MS1925	112	121
MS1926	121	130
MS1927	130	140
MS1928	140	150
MS1929	150	162
MS1930	162	174
MS1931	174	187
MS1932	187	200
MS1933	200	213
MS1934	213	226
MS1935	226	239
MS1936	239	252
MS1937	252	265
MS1938	265	278
MS1939	278	291
MS1940	291	304
MS1941	304	317
MS1942	317	330
MS1943	330	343
MS1944	343	356
MS1945	356	369
MS1946	369	382
MS1947	382	395
MS1948	395	408

Tech Sheet 1740

Available in the following material qualities:



**AISI 430**  
STAINLESS STEEL



**AISI 304**  
STAINLESS STEEL



**AISI 316**  
STAINLESS STEEL



# HOSE CLAMPS



This top of the range heavy-duty clamp is ideal for marine applications, foodstuff manufacture, pharmaceutical and petrochemical industries and other applications where AISI 316 stainless steel fittings are required

## Supra Heavy-duty Clamp W4

**Material:**

**Band and bridge:** Stainless Steel X5CrNi 18010 AISI-304

**Screw:** AISI-304 Stainless Steel

**Finish:** Stainless Steel

stainless steel



5556	Min Size mm	Max Size mm
SS1301	17	19
SS1302	19	21
SS1303	21	23
SS1304	23	25
SS1305	25	27
SS1306	27	29
SS1307	29	31
SS1308	31	34
SS1309	34	37
SS1310	37	40
SS1311	40	43
SS1312	43	47
SS1313	47	51
SS1314	51	55
SS1315	55	59
SS1316	59	63
SS1317	63	68
SS1318	68	73
SS1319	73	79
SS1320	79	85
SS1321	85	91
SS1322	91	97
SS1323	97	104
SS1324	104	112

5556	Min Size mm	Max Size mm
SS1325	112	121
SS1326	121	130
SS1327	130	140
SS1328	140	150
SS1329	150	162
SS1330	162	174
SS1331	174	187
SS1332	187	200
SS1333	200	213
SS1334	213	226
SS1335	226	239
SS1336	239	252
SS1337	252	265
SS1338	265	278
SS1339	278	291
SS1340	291	304
SS1341	304	317
SS1342	317	330
SS1343	330	343
SS1344	343	356
SS1345	356	369
SS1346	369	382
SS1347	382	395
SS1348	395	408

Tech Sheet 1741

## Supra Heavy-duty Clamp W5

**Material:**

**Band and bridge:** Stainless Steel X5CrNi

MO 1712 AISI-316

**Screw:**

Stainless Steel

AISI-316 Cu

**Finish:** Stainless Steel



5556	Min Size mm	Max Size mm
03013614	17	19
03013622	19	21
03013630	21	23
03013649	23	25
03013657	25	27
03013665	27	29
03013673	29	31
03013681	31	34
03013690	34	37
03013702	37	40
03013710	40	43
03013729	43	47
03013737	47	51
03013745	47	51
03013753	55	59
03013761	59	63
03013770	63	68
03013788	68	73
03013796	73	79
03013809	79	85
03013817	85	91
03013825	91	97
03013833	97	104
03013841	104	112
03013850	112	121
03013868	121	130
03013876	130	140
03013884	140	150
03013892	150	162
03013905	162	174
03013913	174	187
03013921	187	200
03013930	200	213
03013948	213	226
03013956	226	239
03013964	239	252
03013971	252	265
03013981	265	278
03013982	278	291
03013983	291	304
03013984	304	317
03013985	317	330
03013986	330	343
03013991	343	356
03013992	356	369
03013993	369	382
03013994	382	395
03013995	395	408



For Automotive Tubing  
see page 910



Available in the following material qualities:



AISI 430  
STAINLESS STEEL



AISI 304  
STAINLESS STEEL



AISI 316  
STAINLESS STEEL

## Supra Constant Tension Heavy-duty Clamp



The hose clamp that adapts itself to variations of pressure and temperature.



The Supra CT clamp incorporates a bespoke bolt and a series of conical washers to the already outstanding Supra clamp. This specialized version of the Supra clamp is used in applications subject to vibration and/or great variations in temperature which can cause the spring washer system, the Supra CT maintains constant pressure around the hose despite variations in temperature or vibration.

This clamp is generally fitted in combustion engines in construction machinery, trucks, tractors, buses, marine engines, military vehicles and diesel-powered generators. The bevelled edges protect the hose from damage.

Supra CT

**Material:**

**Band and bridge:**  
Stainless Steel X8Cr17 AISI-430

**Screw:** 8.8 Grade Steel

**Washers and Trunnions:**  
Stainless Steel AISI-304

**Finish:** Stainless Steel

### Supra Constant Tension Heavy-duty Clamp W2

5556	Min Size mm	Max Size mm
CT0302021-4	43	47
CT0302023-0	51	55
CT0302025-7	59	63
CT0302029-0	79	85
CT0302030-2	85	91
CT0302031-0	91	97
CT0302034-5	112	121

Tech Sheet 1742

Other sizes available on request

Available in the following material qualities:



**AISI 430**  
STAINLESS STEEL



**AISI 304**  
STAINLESS STEEL



**AISI 316**  
STAINLESS STEEL

# HOSE CLIPS

## Supra 2-Bolt Range

The **SUPRA 2-bolt** heavy-duty clamp is an ideal solution for applications where increased performance and improved distribution of radial forces around the circumference of the band are required.

To ensure maximum clamping force, our bolts are manufactured in-house by **Mikalor** with an exclusively designed the outer hexagonal head, which guarantees the highest clamping force on the market.

The bevelled band edges avoid damage to the hose, making Supra safe and reliable to use.

This 2-bolt version of the Supra clamp is recommended for applications with an outer diameter (OD) over 270mm for use in sectors such as oil and gas, marine, agriculture, foodstuffs, hydraulics and chemicals, amongst others.



### 2 Bolt Supra Heavy-duty Hose Clamps W2

5556	Min Size mm	Max Size mm
03170001	270	280
03170003	280	290
03170005	285	295
03170007	315	325
03170009	345	355
03170011	370	385
03170013	395	410
03170015	420	435
03170017	445	460
03170019	470	485
03170021	495	510
03170023	520	535
03170025	545	560
03170027	570	585
03170029	595	610
03170031	620	635
03170033	650	665
03170035	680	695
03170037	715	730
03170039	740	755
03170041	765	780
03170043	790	805
03170045	820	835

Tech Sheet 17125

Available in the following material qualities:



**W2**  
AISI 430  
STAINLESS STEEL



**W4**  
AISI 304  
STAINLESS STEEL



**W5**  
AISI 316  
STAINLESS STEEL

## Supra, W4



### 2 Bolt Supra Heavy-duty Hose Clamps W4

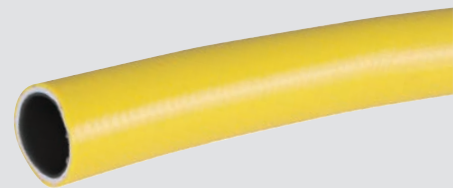
5556	Min Size mm	Max Size mm
03180001	270	280
03180003	280	290
03180005	285	295
03180007	315	325
03180009	345	355
03180011	370	385
03180013	395	410
03180015	420	435
03180017	445	460
03180019	470	485
03180021	495	510
03180023	520	535
03180025	545	560
03180027	570	585
03180029	595	610
03180031	620	635
03180033	650	665
03180035	680	695
03180037	715	730
03180039	740	755
03180041	765	780
03180043	790	805
03180045	820	835

## Supra, W5



### 2 Bolt Supra Heavy-duty Hose Clamps W5

5556	Min Size mm	Max Size mm
03190001	270	280
03190003	280	290
03190005	285	295
03190007	315	325
03190009	345	355
03190011	370	385
03190013	395	410
03190015	420	435
03190017	445	460
03190019	470	485
03190021	495	510
03190023	520	535
03190025	545	560
03190027	570	585
03190029	595	610
03190031	620	635
03190033	650	665
03190035	680	695
03190037	715	730
03190039	740	755
03190041	765	780
03190043	790	805
03190045	820	835



For **Heavy-duty Agricultural Water Hose** see page **1422**

## The Mikalor ASFA Worm-drive Clip Range

The **Mikalor DIN 3017 ASFA worm-drive clip range** is manufactured in material qualities ranging from W1 (zinc-plated mild steel) up to W5 (AISI 316 stainless steel) and in band widths ranging from 7mm up to 16mm. The range includes ASFA-CT constant tension clips with a spring insert and a also a black version with a Delta-Seal surface treatment. For extreme applications ASFA is also available in titanium with a PTFE surface treatment. The entire ASFA range is manufactured according to IATF 16949 and is fully compliant with the requirements of the automotive sector.

### ASFA LW2 Worm-drive Clip

**Material:**  
**Band and Housing:** Stainless Steel (AISI 430)  
**Screw:** Steel Qst 36-3 (DIN 1.0214)  
**Finish:**  
**Band and Housing:** Stainless Steel  
**Screw:** Grey-White Cr3 Zinc-Plated



#### 430 Stainless Steel, 9mm Band Width

5556	Min Size mm	Max Size mm
0301650-8	8	12
0301651-6	8	16
0301652-4	12	22
0301653-2	16	27
0301654-0	20	32
0301655-9	25	40
0301656-7	30	45
0301657-5	32	50
0301658-3	40	60
0301659-1	50	70
0301660-4	60	80
0301661-2	70	90
0301662-0	80	100
0301663-9	90	110
0301667-1	130	150
0301668-0	140	160

Tech Sheet 68770

### ASFA LW4 Worm-drive Clip

**Material:**  
**Band and Housing:** Stainless Steel X5Cr Ni1810 (AISI 304)  
**Screw:** Stainless Steel (AISI 304)  
**Finish:** Stainless Steel

stainless steel



#### Stainless Steel, 9mm Band Width

5556	Min Size mm	Max Size mm
0301401-9	8	16
0301402-7	12	22
0301403-5	16	27
0301404-3	20	32
0301405-1	25	40
0301406-0	30	45
0301407-8	32	50
0301408-6	40	60
0301409-4	50	70
0301410-7	60	80
0301411-5	70	90
0301412-3	80	100
0301414-0	90	110
0301415-8	100	120
0301416-6	110	130
0301417-4	120	140
0301418-2	130	150
0301419-0	140	160

Tech Sheet 68184

### ASFA W5 Worm-drive Clip

**Material:** Stainless Steel AISI 316  
**Finish:** Stainless Steel

stainless steel



#### 316 Stainless Steel, 9mm/12mm Band Width

5556	Min Size mm	Max Size mm
0301575-9	8	16
0301576-7	12	22
0301772-0	16	27
0301750-0	20	32
0301751-9	25	40
0301773-8	30	45
0301752-7	32	50
0301753-5	40	60
0301754-3	50	70
0301755-1	60	80
0301756-0	70	90
0301757-8	80	100
0301758-6	90	110
0301759-4	100	120
0301760-7	110	130
0301761-5	120	140
0301762-3	130	150
0301763-1	140	160
0301764-0	150	170
0301765-8	160	180
0301766-6	170	190
0301767-4	180	200
0301768-2	190	210
0301769-0	200	220
0301770-3	210	230
0301771-1	220	240

Tech Sheet 68185

Available in W1, W2, W3, W4 and W5

# HOSE CLIPS

## ASFA SW1 Worm-drive Clip

**Material:**  
**Band and housing:** Galvanized Steel (DIN 1.0935)  
**Screw:** Steel Qst 36-3 (DIN 1.0214)  
**Finish:**  
**Band and housing:** Galvanized Steel  
**Screw:** Grey-White Cr3 Zinc-Plated



### Galvanised Steel, 12mm Band Width

5556	Min Size mm	Max Size mm
0300900-1	16	27
0300900-2	20	32
0300900-3	25	40
0300900-4	30	45
0300900-5	32	50
0300900-6	40	60
0300900-7	50	70
0300900-8	60	80
0300900-9	70	90
0300901-0	80	100
0300901-1	90	110
0300901-2	100	120
0300901-3	110	130
0300901-4	120	140
0300901-5	130	150
0300901-6	140	160
0300901-7	150	170
0300901-8	160	180
0300901-9	170	190
0300902-0	180	200
0300902-1	190	210
0300902-3	210	230
0300902-4	220	240

Tech Sheet 68183

## ASFA SW4 Worm-drive Clip

**Material:**  
**Band and Housing:** Stainless Steel X5Cr Ni1810 (AISI 304)  
**Screw:** Stainless Steel (AISI 304)  
**Finish:** Stainless Steel



### 304 Stainless Steel, 12mm Band Width

5556	Min Size mm	Max Size mm
0301473-0	16	27
0301451-0	20	32
0301452-9	25	40
0301474-8	30	45
0301453-7	32	50
0301454-5	40	60
0301455-3	50	70
0301456-1	60	80
0301457-0	70	90
0301458-8	80	100
0301459-6	90	110
0301460-9	100	120
0301461-7	110	130
0301462-5	120	140
0301463-3	130	150
0301464-1	140	160
0301465-0	150	170
0301466-8	160	180
0301467-6	170	190
0301468-4	180	200
0301469-2	190	210
0301471-3	210	230
0301472-1	220	240

Tech Sheet 68186

## ASFA LW3 Worm-drive Clip (Black Finish)

This clamp is manufactured in AISI 430 with an additional matt-black surface treatment which increases its corrosion resistance. Thanks to the surface treatment, this clamp can be mounted discreetly in any application, making it a favourite in automotive or motorcycle applications.

**Screw:** AISI 430 stainless steel  
**Band and Housing:** Stainless steel X6Cr-17 (DIN 1.4016) (AISI-430)

**Finish:** Black

stainless steel



### 430 Stainless Steel, 9mm Band Width

5556	Min Size mm	Max Size mm
73016011	8	16
73016020	12	22
73016038	16	27
73016046	20	32
73016062	25	40
73016070	30	45
73016089	32	50
73016095	40	60
73016100	50	70
73016118	60	80

Tech Sheet 20467



For Automotive Hose & Tube  
 see page 1417



Available in W1, W2, W3, W4 and W5



# HOSE CLIPS

## ASFA SW3 Constant Tension Worm-drive Clips

12mm band width **Constant Tension worm-drive clips** are designed to be used primarily in the automotive sector. The main advantage of this clip over the standard Mikalor worm drive is to be found in the spring-loaded insert, fitted on a semi-circular support to the inside of the band.

The use of this spring-loaded insert guarantees constant pressure around the hose and the optimum performance of the clamp in case of variations in temperature, pressure or vibration. For this reason, constant tension worm-drive clips are used mainly with tubes or hoses carrying hot air or on engine refrigeration systems, as clamps used in these applications are subject to expansion and contraction due to frequent changes in temperature. ASFA CT worm-drive clips are manufactured entirely from stainless steel, thereby ensuring good corrosion resistance.

## W3 S-Band Constant Tension Worm-drive Clips

**Material:** AISI-430 Stainless Steel  
**Spring-loaded insert:** AISI-410 Stainless Steel  
**Finish:** Stainless Steel

stainless steel



5556	Min Size mm	Max Size mm
03017800	16	27
03017818	20	32
03017834	30	45
03017842	32	50
03017850	40	60
03017869	50	70
03017877	60	80
03017885	70	90
03017893	80	100
03017906	90	110
03017914	100	120
03017922	110	130

Tech Sheet 20096

## ASFA High-Torque (16 mm) Hose Clamp

**Mikalor High-Torque Clamps** were designed to guarantee maximum performance in the most demanding applications. Thanks to the use of an M8 screw and the choice of 16mm bandwidth, torque values can be applied which are far higher than those used with the standard ASFA range, thereby ensuring perfect performance in high-pressure applications.

The High-Torque clamp is particularly popular in industrial and automotive applications due to its outstanding performance. The perfectly rounded bevelled band edges avoid the clamp cutting into or damaging the hose.

**Material:**  
**Band and Housing:** Stainless Steel X6Cr17 (AISI 430)  
**Screw:** Stainless Steel (AISI 304 CU)  
**Finish:** Stainless Steel



## ASFA High-Torque W3 Worm-drive Hose Clip

5556	Min Size mm	Max Size mm
03066001	25	45
03066002	32	54
03066003	45	67
03066004	57	79
03066005	70	92
03066006	83	105
03066007	95	118
03066008	108	130
03066009	121	143
03066010	133	156
03066011	146	168
03066012	159	181
03066013	172	194
03066014	184	206
03066015	197	219
03066016	210	232

MIKALOR **new product**

## High Torque Worm-drive Clips



### High Torque Worm-drive Hose Clip W4

5556	Min Size mm	Max Size mm
03067001	25	45
03067002	32	54
03067003	45	67
03067004	57	79
03067005	70	92
03067006	83	105
03067007	95	118
03067008	108	130
03067009	121	143
03067010	133	156
03067011	146	168
03067012	159	181
03067013	172	194
03067014	184	206
03067015	197	219
03067016	210	232

## Worm-drive Accessories



### Safety Collars

5556	Colour
02170371	Red
02170380	Blue



### Safety Cap

5556	Size mm	Colour
02170401	9mm	Red
02170411	9mm	Blue
02170441	12mm	Red
02170451	12mm	Blue

Available in W1, W2, W3, W4 and W5

# HOSE CLIPS

MIKALOR

new product

## Assortment Box

- Includes No.7 flexible screwdriver.

Contents (ASFA-L):		Contents (ASFA-S):	
Size	Quantity	Size	Quantity
8-16mm	20	16-27mm	20
12-22mm	20	20-32mm	15
16-27mm	20	25-40mm	15
20-32mm	20	30-45mm	10
25-40mm	15	32-50mm	8
32-50mm	10	40-60mm	5
40-60mm	5		



### ASFA Worm-drive Assortment Boxes

5556	Description	Kit Quantity
03503201	ASFA-L W1	110
03503211	ASFA-L W2	110
03503221	ASFA-L W4	110
03503231	ASFA-S W1	73
03503241	ASFA-S W2	73
03503251	ASFA-S W4	73
03503261	ASFA-S W5	73

- Includes clamping pliers.

Contents:			
Size	Quantity	Size	Quantity
5-7mm	50	15-18mm	50
7-9mm	50	17-20mm	30
9-11mm	50	20-23mm	25
11-13mm	50	22-25mm	20
13-15mm	50		



### Ear Clips

5556	Description
03503116	Assortment 2-Ear Clip W1
03503124	Assortment 2-Ear Clip W4

### Contents (W1):

Size	Quantity	Contents (W4):	Quantity
6/15	12	6/15	12
8/15	10	8/15	10
10/15	10	10/15	10
12/15	8	12/15	8
14/15	6	14/15	8
15/15	6	15/15	6
16/15	6	16/15	6
20/15	4	18/15	4



### P Clips

5556	Description
03503271	Assortment DIN 3016 P-Clip W1 (62 Pieces)
03503281	Assortment DIN 3016 P-Clip W4 (64 Pieces)

Available in W1 and W4

## Tools



### Pliers

5556	Description
03011096	Side-Closing Ear Clip Pliers
03011088	Front-Closing Ear Clip Pliers

The 7mm hex-socket flexidriver is ideal for tightening Mikalor ASFA Clamps.



### 7mm Hex-Socket Flexidriver

5556
03091036

# CLIP PACKS



## Hi-Grip Mild Steel Assorted Pack

- Size ranging from 12mm up to 50mm



135 Assorted, Mild Steel Zinc Plated Clips

5557  
HGZAB1

## Flexible Driver

Purpose made for all HI-GRIP hose clips with stainless steel shaft and socket.



5557  
DHG2BG

## Hi-Grip Stainless Steel Assorted Pack

- Size ranging from 12mm up to 50mm

stainless steel



135 Assorted, 18/8 Marine, Quality BS304 Stainless Steel Clips

5557  
HGSAB1

## T-Bar Driver

Suitable for all HI-TORQUE fittings



5557  
DHT3BG

## Zinc Plated Mini Clips Assorted Pack

- Diameter Ranges: 7mm-9mm, 8mm-10mm, 9mm-11mm, 10mm-12mm, 11mm-13mm, 12mm-14mm, 13mm-15mm, 14mm-16mm, 15mm-17mm, 16-18mm



157 Assorted, Zinc Plated Mini Clips

5557  
MCZAB1

# COUNTER DISPENSERS

These new counter dispensers are an ideal point of sale unit for the Automotive, Food, Pharmaceutical and Industrial markets.

## Hi-Grip, Zinc Plated

100 Clips sizes:  
12mm - 50mm x 10  
1 x Flexible Driver



### 100 Clip Dispenser

5557  
DISPKZ1

## Hi-Grip, Stainless Steel

100 Clips sizes:  
12mm - 50mm x 10  
1 x Flexible Driver

stainless steel



### 100 Clip Dispenser

5557  
DISPKS1

160 Clips sizes:  
12mm - 100mm x 10  
1 x Flexible Driver



### 160 Clip Dispenser

5557  
DISPKZ2

160 Clips sizes:  
12mm - 100mm x 10  
1 x Flexible Driver

stainless steel



### 160 Clip Dispenser

5557  
DISPKS2

# WORM DRIVE HOSE CLAMPS



## Hi-Torque Heavy-duty

**Material:**  
Band and Housing BS304, Screw Hardened to BS410.  
Hi-Torque 18/8 Marine available upon request.

stainless steel



5557	Min Size mm	Max Size mm
HT27	20	27
HT30	20	30
HT35	20	35
HT40	25	40
HT45	25	45
HT50	30	50
HT60	40	60
HT65	45	65
HT70	50	70
HT80	60	80
HT90	70	90
HT95	75	95
HT100	80	100
HT120	90	120
HT140	110	140
HT160	130	160
HT180	150	180
HT200	170	200
HT220	190	220
HT240	210	240
HT260	230	260
HT280	250	280
HT320	290	320
HT340	310	340
HT360	330	360
HT380	350	380
HT400	370	400
HT420	390	420
HT440	410	440
HT460	430	460
HT480	450	480
HT500	470	500

## Hi-Grip Worm-drive Hose Clip

**Material:**  
Mild Steel, Zinc Plated.



### Wing Screw to BS5315

5557	Min Size mm	Max Size mm
510-12	9.5	12
510-16	11	16
510-20	13	20
510-22	14	22
510-25	17	25
510-30	22	30
510-35	25	35
510-40	30	40
510-45	35	45
510-50	35	50
510-55	40	55
510-60	45	60
510-80	60	80

## Hi-Grip WDHC



### Hi-Grip Mild Steel

5557	Min Size mm	Max Size mm
WDHC000	9.5	12
WDHCM00	11	16
WDHC00	13	20
WDHC0	14	22
WDHC0X	17	25
WDHC1A	22	30
WDHC1	25	35
WDHC1X	30	40
WDHC45	35	45
WDHC2A	35	50
WDHC2	40	55
WDHC2X	45	60
WDHC3	50	70
WDHC3X	60	80
WDHC4	70	90
WDHC4X	80	100
WDHC5	90	120
WDHC6	110	140
WDHC7	130	160
WDHC8	150	180
WDHC200	170	200
WDHC220	190	220
WDHC240	210	240
WDHC260	230	260
WDHC280	250	280
WDHC300	270	300

stainless steel

### Hi-Grip Stainless Steel

5557	Min Size mm	Max Size mm
WDHC000-SS	9.5	12
WDHCM00-SS	11	16
WDHC00-SS	13	20
WDHC0-SS	14	22
WDHC0X-SS	17	25
WDHC1A-SS	22	30
WDHC1-SS	25	35
WDHC1X-SS	30	40
WDHC45-SS	35	45
WDHC2A-SS	35	50
WDHC2-SS	40	55
WDHC2X-SS	45	60
WDHC3-SS	50	70
WDHC3X-SS	60	80
WDHC4-SS	70	90
WDHC4X-SS	80	100
WDHC5-SS	90	120
WDHC6-SS	110	140
WDHC7-SS	130	160
WDHC180-SS	150	180
WDHC200-SS	170	200
WDHC220-SS	190	220
WDHC240-SS	210	240
WDHC260-SS	230	260



For Hi-Vis Air & Water RPVC Hose  
see page 1408





# CLAMPS & HOSE CLIPS

**A World Leader in the design & supply of sealing, connecting & clamping solutions.**

High performance products specified by the world's leading manufacturers for all their hose, tube and pipe applications.

- Specially designed for the perfect seal
- Quality Assured engineering and manufacture to ISO 9002, QS 9000 and ISO 14001.
- Over 3 million parts produced EVERY day allows us to give the customer exceptional value.

## NORMA® Hose Clips

- Top Sealing Performance through its Unique Design



### Mild Steel Alu-Zinc Plated

7777	Min Size mm	Max Size mm	Band Width mm
NOR-000	8	12	9
NOR-M00	10	16	9
NOR-00	12	22	9
NOR-0	16	27	12
NOR-1A	20	32	12
NOR-1	25	40	12
NOR-2A	35	50	12
NOR-2	40	60	12
NOR-2X	40	60	12
NOR-3	50	70	12
NOR-3X	60	80	12
NOR-4	70	90	12
NOR-4X	80	100	12
NOR-5	90	110	12

- Top Sealing Performance through its Unique Design

stainless steel



### All Stainless Steel

7777	Min Size mm	Max Size mm	Band Width mm
NOR-SS-75-12	8	12	7.5
NOR-SS-75-16	10	16	7.5
NOR-SS-75-18	12	18	7.5
NOR-SS-000	8	16	9
NOR-SS-M00	8	16	9
NOR-SS-00	12	22	9
NOR-SS-0	16	27	12
NOR-SS-1A	20	32	12
NOR-SS-1	25	40	12
NOR-SS-1X	25	40	12
NOR-SS-2A	32	50	12
NOR-SS-2	40	60	12
NOR-SS-2X	40	60	12
NOR-SS-3	50	70	12
NOR-SS-3X	60	80	12
NOR-SS-4	70	90	12
NOR-SS-4X	80	100	12
NOR-SS-5	90	110	12

## NORMA® High Torque Hose Clips

- Recommended Tightening Torque 17 Nm (150lb in)

stainless steel



### All Stainless Steel, 16mm Band Width

7777	Min Size mm	Max Size mm
NOR-HD45	25	45
NOR-HD54	32	54
NOR-HD67	45	67
NOR-HD79	57	79
NOR-HD92	70	92
NOR-HD118	95	118
NOR-HD130	108	130
NOR-HD143	121	143
NOR-HD168	146	168
NOR-HD181	159	181
NOR-HD194	172	194



For Polyethylene Pipe Insulation see page 1215

## NORMA® Clamp GBS M Heavy-duty Clamp

- Up to 70% higher band tension than leading competitor
- Wide clamping range 17mm to 252mm
- Environmentally friendly - Chrome VI Free
- Mechanically locked so no spot weld weakness
- Rounded band edges for hose protection
- DIN 3017 Accredited



### Clamps Supplied in W2 Material

7777	Min Size mm	Max Size mm
NOR-05917182018	17	19
NOR-05917182020	19	21
NOR-05917182022	21	23
NOR-05917182024	23	25
NOR-05917182026	25	27
NOR-05917182028	27	29
NOR-05917182030	29	31
NOR-05917182033	31	34
NOR-05917182036	34	37
NOR-05917182039	37	40
NOR-05917182042	40	43
NOR-05917202045	43	47
NOR-05917202049	47	51
NOR-05917202053	51	55
NOR-05917202057	55	59
NOR-05917202061	59	63
NOR-05917202066	63	68
NOR-05917252071	68	73
NOR-05917252076	73	79
NOR-05917252082	79	85
NOR-05917252088	85	91
NOR-05917252094	91	97
NOR-05917252101	97	104
NOR-05917252108	104	112
NOR-05917252117	112	121
NOR-05917252126	121	130
NOR-05917302135	130	140
NOR-05917302145	140	150
NOR-05917302156	150	162
NOR-05917302168	162	174
NOR-05917302181	174	187
NOR-05917302194	187	200
NOR-05917302207	200	213
NOR-05917302220	213	226
NOR-05917302233	226	239
NOR-05917302246	239	252

# CLAMPS, CLIPS & FASTENERS



## NORMA® Hose Clamps & Clips



### Normaclamp Worm-drive Quick Lock W2B

7777	Clamp Range mm
8156120050	32-50
8156120060	40-60
8156120145	60-145
8156120170	60-170
8156120270	60-270
8156120325	60-325
8156120380	60-380
8156130135	60-135

## NORMA® Quick Assembly 1 Piece Cobra Hose Clips

- Low Profile, Easy Fit Hose Clip

stainless steel



### Stainless Steel

7777	To Suit Hose OD mm	Band Width mm
NOR-COBRA75	7.5	7
NOR-COBRA8	8	7
NOR-COBRA9	9	7
NOR-COBRA10	10	7
NOR-COBRA105	10.5	7
NOR-COBRA11	11	7
NOR-COBRA115	11.5	7
NOR-COBRA12	12	8
NOR-COBRA13	13	8
NOR-COBRA14	14	8
NOR-COBRA15	15	8
NOR-COBRA16	16	8
NOR-COBRA17	17	8
NOR-COBRA18	18	8
NOR-COBRA19	19	8
NOR-COBRA20	20	8
NOR-COBRA21	21	8
NOR-COBRA24	24	8
NOR-COBRA26	26	8
NOR-COBRA27	27	8
NOR-COBRA28	28	8
NOR-COBRA29	29	8

## Cobra Clip Hand Tool



7777

1108420000



For Jointing Compounds & Sealants see page 1391

# O CLIPS



## O Clips



### Mild Steel

5559	Nominal Size	Min Size mm	Max Size mm
NO5-7	1/4"	5	7
NO7-9	5/16"	7	9
NO9-11	7/16"	9	11
NO9-12	7/16"	9	12
NO11-13	1/2"	11	13
NO13-15	9/16"	13	15
NO14-17	19/32"	14	17
NO15-18	5/8"	15	18
NO17-20	3/4"	17	20
NO19-22	13/16"	19	21
NO20-23	7/8"	20	23
NO22-25	15/16"	22	25
NO23-27	1"	23	27
NO25-28	1.1/16"	25	28
NO28-31	1.3/16"	28	31
NO31-34	1.5/16"	31	34
NO34-37	1.7/16"	34	37
NO37-40	1.1/2"	37	40
NO40-43	1.5/8"	40	43

Tech Sheet 588

## Assorted Kits

### Contents:

Size	Quantity
9-11mm	34
11-13mm	26
13-15mm	18
14-17mm	14
15-18mm	24
17-20mm	20
18-21mm	20
22-25mm	12
Pincers	1



## O Clips

5559	Material
OC-KIT-MS	Mild Steel

Tech Sheet 20468

## Single Ear O Clips



### Mild Steel

5559	Min Size mm	Max Size mm
2019-1080	7	9
2019-1084	8	10
2019-1093	11	13
2019-1094	12	14
2019-1096	14	16
2019-1098	16	18

## Snap Clip, Acetal



0497	Min Size mm	Max Size mm
PC8-10	8	10
PC10-12	10	12
PC11-13	11	13
PC13-15	13	15
PC14-16	14	16
PC15-17	15	17
PC16-18	16	18
PC17-19	17	19
PC18-20	18	20
PC21-23	21	23
PC23-25	23	25
PC26-28	26	28
PC30-32	30	32

## O Clip Pliers



5555
OP1



## Clip Tools

6666	Function
P1099	Side Closing

## Single Ear Hose Clamp

### stainless steel



### Stainless Steel, 5mm Band Width

5555	Min Size mm	Max Size mm
SEHC6.5	5	6.5
SEHC7	5.8	7
SEHC8	6.8	8
SEHC8.7	7	8.7
SEHC9.5	7.8	9.5
SEHC10.5	8.8	10.5

Tech Sheet 20411



### Stainless Steel, 7mm Band Width

5555	Min Size mm	Max Size mm
SEHC11.3	9.6	11.3
SEHC11.9	10.2	11.9
SEHC12.3	10.6	12.3
SEHC13.3	10.8	13.3
SEHC14	11.5	14
SEHC14.5	12	14.5
SEHC15.3	12.8	15.3
SEHC16.2	13.7	16.2
SEHC17.5	15	17.5
SEHC18.5	15.3	18.5
SEHC19.2	16	19.2
SEHC22.6	19.4	22.6
SEHC23.5	20.4	23.6
SEHC24.1	20.9	24.1
SEHC27.1	23.9	27.1
SEHC32.1	28.9	32.1
SEHC34.6	31.4	34.6
SEHC41	37.8	41
SEHC42.5	39.3	42.5
SEHC44	40.8	44
SEHC51.5	48.3	51.5
SEHC63.5	60.3	63.5

Tech Sheet 20412

# HOSE CLAMPS

## Mikalor O Clips

The use of one ear clips is an economical solution for many simple hose assemblies carrying air or fluids. They are ideal for use with simple hose assemblies which do not require high clamping force. The practical design of ear clips means that they are easy, fast and safe to mount. They are also tamper-proof once mounted. The edges are rounded to avoid damage to the hose.



### Steel, Zinc Plated, 1 Ear

5556	Min Size mm	Max Size mm
03012072	8	10
03012013	9	11
03012021	10	12
03012030	11	12
03012048	12	14
03012056	14	16
03012064	16	18.5

Tech Sheet 1743

### Stainless Steel, 1 Ear

stainless steel

5556	Min Size mm	Max Size mm
23012440	7	9
23012087	8	10
23012010	9	11
23012028	10	12
23012036	11	13
23012044	12	14
23012079	12	15
23012052	14	16
23012458	15	17
23012060	16	18
23012423	17	19
23012431	18	20

Tech Sheet 1744

The use of two ear clips is an economical solution for leaktight, simple hose assemblies on hoses transporting air, gas or other fluids

The two ears give the clip extra grip and help to maintain constant pressure around the hose. The edges are rounded to avoid damage to the hose and the assembly of this clamp is fast, safe and easy. The clamping range is greater than the one ear clip, meaning that the two-ear clip can be used on larger bore hoses. The practical design of two ear clips means that they clamp firmly onto the assembly and are tamper proof once mounted.



### Steel, Zinc Plated, 2 Ear

5556	Min Size mm	Max Size mm
03012101	5	7
03012110	7	9
03012128	9	11
03012136	11	12
03012144	13	15
03012152	14	17
03012160	15	18
03012179	17	20
03012187	18	21
03012195	20	23
03012208	22	25
03012216	23	27
03012224	25	28
03012232	28	31
03012240	31	34
03012259	34	37
03012267	37	40
03012275	40	43
03012283	43	46

Tech Sheet 1743

### Stainless Steel, 2 Ear

stainless steel

5556	Min Size mm	Max Size mm
23012108	5	7
23012116	7	9
23012124	9	11
23012132	11	13
23012140	12	15
23012159	14	17
23012167	15	18
23012175	17	20
23012183	18	21
23012191	20	23
23012204	22	25

Tech Sheet 1744

## Mikalor O Clips with Stainless Steel Inner Ring

The fact that these clamps are used on very small-bore hoses means that the material of the tube or hose can sometimes be very flexible, making it more difficult to ensure a leaktight assembly due to the possible deformation of the hose. In these cases, the inner-ring is key in helping to guarantee leaktightness as well as protecting the hose from being pinched during assembly.



### Steel, Zinc Plated, 1 Ear

5556	Min Size mm	Max Size mm
03011010	7.5	9.5
03011029	8.5	10.5
03011037	9.5	11.5
03011045	10.4	12.4
03011053	11.4	13.4
03011061	13.4	15.4
03011070	15.4	17.4

Tech Sheet 1745

### Stainless Steel, 1 Ear

stainless steel

5556	Min Size mm	Max Size mm
23012300	6.5	8.5
23012319	8.2	9.5
23012327	8.5	10.4
23012335	9.5	11.4
23012343	10.4	12.4
23012351	11.4	13.4
23012360	12.4	14.4
23012378	13.4	15.4
23012386	14.4	16.4
23012394	15.4	17.4
23012407	16.4	18.4
23012415	17.4	19.4

Tech Sheet 1745

Available in W1 and W4

# O CLIPS

## 2 Ear Clamp



### Steel Zinc Plated DIN 1.0338

5562	Min Size mm	Max Size mm
OET0041	3.1	4.1
OET0045	3.5	4.5
OET0305	3	5
OET0507	5	7
OET0709	7	9
OET0811	8	11
OET0911	9	11
OET1113	11	13
OET1315	13	15
OET1517	15	17
OET1518	15	18
OET1619	16	19
OET1720	17	20
OET1922	19	22
OET2023	20	23
OET2225	22	25
OET2327	23	27
OET2528	25	28
OET2731	27	31
OET2831	28	31
OET3134	31	34
OET3437	34	37
OET3740	37	40
OET4043	40	43

Tech Sheet 10445



### Stainless Steel DIN 1.4301

5562	Min Size mm	Max Size mm
0045R	3.5	4.5
0305R	3	5
0507R	5	7
0709R	7	9
0811R	8	11
0911R	9	11
1113R	11	13
1315R	13	15
1517R	15	17
1518R	15	18
1720R	17	20
1922R	19	22
2023R	20	23
2225R	22	25
2327R	23	27
2528R	25	28
2731R	27	31
2831R	28	31
3134R	31	34
3437R	34	37
3740R	37	40
4043R	40	43
4346R	43	46

Tech Sheet 10445

## 1 Ear Clamp



### 308 Stainless Steel DIN 1.4301

5562	Min Size mm	Max Size mm
061R	5.1	6.1
087R	7.5	8.7
090R	7.5	9
095R	8.1	9.5
105R	9.1	10.5
110R	9.3	11
113R	9.6	11.3
120R	10.1	12
128R	10.8	12.8
133R	11.3	13.3
138R	11.8	13.8
140R	12	14
145R	12.5	14.5
150R	13	15
168R	14.6	16.8
175R	15.3	17.5
185R	16.3	18.5
195R	17.2	19.5
200R	17.7	20
207R	17.9	20.7
210R	18.7	21
225R	19.9	22.5
245R	21.7	24.5
307R	27.2	30.7

Tech Sheet 10445

## Oetiker 1-Ear Adjustable Clamps Stainless Steel



### 8mm Band

5562	Size Range mm
15900007	40.0 - 110.0



For Thermoplastic SAE 100R7 Hose  
see page 13



# O CLIPS



## 1 Ear Stepless® Clamps, Stainless Steel 1.4301/UNS S30400

**Narrow band** - Concentrates transmission of clamping force, less weight.

**Stepless over 360°** - Uniform compression or uniform surface pressure.

**Clamp ear** - Compensates for component tolerances, adjustable surface pressure

**Dimple** - Increases clamping force, spring-effect compensates for changes in diameter due to thermal expansion

**Burr-free strip edges** - Reduced risk of damage to parts being clamped



### Band Width 5mm, Thickness 0.5mm

5562	Min Size mm	Max Size mm
16702488	5.3	6.5
16700001	5.8	7
16700002	6.8	8
16700003	7	8.7
16702491	7.3	9
16700004	7.8	9.5
16700005	8.3	10
16700006	8.8	10.5
16702492	9.2	10.9
16700007	9.6	11.3
16700008	10	11.8

Tech Sheet 10445

### Band Width 7mm, Thickness 0.6mm

5562	Min Size mm	Max Size mm
16702951	9.4	11.9
16700009	9.8	12.3
16702493	10.3	12.8
16700010	10.8	13.3
16700011	11.3	13.8
16700012	11.5	14
16702864	11.7	14.2
16700013	12	14.5
16700014	12.3	14.8
16700015	12.8	15.3
16700016	13.2	15.7
16702998	13.5	16
16702494	13.7	16.2
16702495	14.1	16.6
16702496	14.3	16.8
16700017	14.5	17
16702497	15	17.5
16700018	14.6	17.8
16700019	14.8	18
16700020	15.3	18.5
16700110	16	19.2
16702498	16.6	19.8
16700024	17.8	21
16700026	19.4	22.6
16700028	20.3	23.5
16700029	20.9	24.1
16702148	22.4	25.6
16700033	23.9	27.1
16700055	40.8	44
16700037	26.9	30.1
16702993	27.6	30.8
16700040	28.4	31.6

5562	Min Size mm	Max Size mm
16700042	29.9	33.1
16700044	31.4	34.6
16700046	32.9	36.1
16700048	34.4	37.6
16700050	34.9	38.1
16700052	36.4	39.6
16700053	37.8	41
16700054	39.3	42.5
16704055	25.4	28.6
16700055	40.8	44
16700056	42.3	45.5
16700057	43.8	47
16700058	45.3	48.5
16700059	46.8	50
16700061	49.8	53
16700063	52.8	56
16700065	55.8	59
16700067	58.8	62
16700069	61.8	65
16700071	64.8	68
16700073	67.8	71
16700075	70.8	74
16700077	73.8	77
16700079	76.8	80
16700081	79.8	83
16700086	87.3	90.5
16700092	96.3	99.5
16700094	96.3	102.5

Tech Sheet 10445



For **Hose Tails**  
see pages **1140-1148**

## P Clips, 12.7mm Band, M6 Fixing Hole



### Mild Steel, EPDM Liner

5559	Min Size mm
A980045	4
A980060	6
A980080	8
A980090	9
A980100	10
A980110	11
A980120	12
A980130	13
A980140	14
A980150	15
A980160	16
A980180	18
A980190	19
A980200	20
A980210	21
A980220	22
A980230	23
A980240	24
A980250	25
A980270	27
A980280	28
A980290	29
A980300	30
A980320	32
A980330	33
A980350	35
A980380	38
A980400	40
A980420	42
A980440	44
A980470	47
A980480	48
A980500	50
A980540	54
A980550	55
A980560	56
A980600	60
A980640	64
A980700	70

Tech Sheet 20458

stainless steel



### Stainless Steel, EPDM Liner

5559	Min Size mm
D980050	5
D980060	6
D980080	8
D980090	9
D980100	10
D980120	12
D980130	13
D980140	14
D980160	16
D980180	18
D980200	20
D980210	21
D980220	22
D980250	25
D980280	28
D980300	30
D980320	32
D980340	34
D980380	38
D980400	40
D980440	44
D980480	48
D980500	50
D980520	52
D980550	55
D980560	56
D980570	57
D980600	60
D980660	66
D980700	70
D980800	80
D981000	100
D981100	110

Tech Sheet 20458

## Tool Clips



### Narrow Base

5559	Diameter mm
A270060	6
A270120	12
A270160	16
A270200	20
A270250	25
A270280	28
A270320	32
A270380	38
A270450	45
A270500	50
A270630	63

Tech Sheet 20461



### Wide Base

5559	Diameter mm
A280060	6
A280100	10
A280120	12
A280160	16
A280200	20
A280250	25
A280280	28
A280320	32
A280380	38
A280500	50

Tech Sheet 20461



For **Hand Tools**  
see pages 1729-1739

# CLAMPS & HOSE CLIPS



## Jubilee® P Clips

Jubilee® P Clips are suitable for retaining pipes, cables and hoses. Jubilee® P Clips are manufactured from a flexible steel or stainless steel one-piece band with an ethylene-propylene-diene monomer (EPDM) rubber liner.

**Working Temperature:**  
-50°C to +150°C



stainless steel



### 316 Stainless Steel (W5) EPDM Liner, M6.

6666	OD mm
JPC005SS316	5
JPC006SS316	6
JPC008SS316	8
JPC009SS316	9
JPC010SS316	10
JPC012SS316	12
JPC013SS316	13
JPC014SS316	14
JPC015SS316	15
JPC016SS316	16
JPC017SS316	17
JPC018SS316	18
JPC019SS316	19
JPC020SS316	20
JPC021SS316	21
JPC022SS316	22
JPC025SS316	25
JPC027SS316	27
JPC028SS316	28
JPC029SS316	29
JPC030SS316	30
JPC032SS316	32
JPC035SS316	35
JPC040SS316	40
JPC044SS316	44
JPC048SS316	48
JPC052SS316	52

- The band features a stepped design allowing the clip to sit flush with the rubber line. The single-piece construction means there are no joins, which makes the clip very strong.
- The upper hole has an elongated design allowing easy fitting of the clip.

**Quality assurance:** DIN3016  
**Corrosion resistance:** 72-hour NSS test  
**Material:** mild steel zinc-plated



### Mild Steel Zinc Plated (W1), EPDM Liner, M5

6666	Min Size mm
JPC005MS	5
JPC006MS	6
JPC008MS	8
JPC010MS	10
JPC012MS	12
JPC013MS	13
JPC014MS	14
JPC015MS	15
JPC016MS	16
JPC017MS	17
JPC018MS	18
JPC019MS	19
JPC020MS	20
JPC021MS	21
JPC022MS	22
JPC025MS	25
JPC027MS	27
JPC028MS	28
JPC029MS	29
JPC030MS	30
JPC035MS	35
JPC040MS	40
JPC044MS	44

Tech Sheet 60241

- The rubber liner is manufactured in a corresponding profile to be secure in its position on the clip and ensures a tight fit as well as vibration damping and sound insulation. EPDM rubber offers several advantages over alternatives, such as a wide operating temperature range, resistance to UV (ultraviolet) weathering and resistance to creep.

**Quality assurance:** DIN3016  
**Corrosion resistance:** 1,000-hour NSS test  
**Material:** 304 stainless steel



stainless steel

### 304 Stainless Steel (W4), EPDM Liner, M6

6666	Min Size mm
JPC005SS	5
JPC006SS	6
JPC008SS	8
JPC009SS	9
JPC010SS	10
JPC012SS	12
JPC013SS	13
JPC014SS	14
JPC015SS	15
JPC016SS	16
JPC017SS	17
JPC018SS	18
JPC019SS	19
JPC020SS	20
JPC021SS	21
JPC022SS	22
JPC025SS	25
JPC028SS	28
JPC030SS	30
JPC035SS	35
JPC040SS	40
JPC044SS	44

Tech Sheet 60241

## Jubilee® P Clip Kits

Contains 110 x P Clips of the most accepted sizes in a versatile, re-usable plastic container suitable for any challenging environment.

Jubilee® P Clips are manufactured from one piece of steel band with an EPDM rubber liner.

### P Clip Kits

6666	Material
JPCK110MS	Mild Steel
JPCK110SS	304 Stainless Steel

Tech Sheet 60243



# CLIPS



## M6 P Clips, 12mm Band

**Material:**  
Mild Steel, Zinc Plated.  
EPDM Rubber lined.



### Mild Steel, Standard Liner

5557	Min size mm
500-05	5
500-06	6
500-08	8
500-09	9
500-10	10
500-12	12
500-13	13
500-16	16
500-19	19
500-21	21
500-22	22
500-25	25
500-28	28
500-29	29
500-32	32
500-35	35
500-40	40
500-44	44
500-48	48
500-52	52
500-56	56
500-60	60

Tech Sheet 589

**Material:** Mild Steel, Zinc Plated.  
**Standard Liner:** TPE -30°C to +60°C High temperature rubber liner.  
**TPE 160:** -50°C to +160°C.



### Mild Steel, High Temperature Liner

5557	Min Size mm
501-5	5
501-6	6
501-8	8
501-9	9
501-10	10
501-12	12
501-13	13
501-16	16
501-19	19
501-21	21
501-22	22
501-25	25
501-28	28
501-29	29
501-32	32
501-35	35
501-40	40
501-48	48
501-52	52
501-56	56
501-60	60

Tech Sheet 589

## 304 Stainless Steel, P Clips, 12mm Band

**stainless steel**



### Stainless Steel, Standard Liner

5557	Min Size mm
500-5SS	5
500-6SS	6
500-8SS	8
500-10SS	10
500-13SS	13
500-16SS	16
500-19SS	19
500-21SS	21
500-22SS	22
500-25SS	25
500-28SS	28
500-29SS	29
500-32SS	32
500-35SS	35
500-40SS	40
500-44SS	44
500-48SS	48
500-52SS	52
500-56SS	56
500-60SS	60

Tech Sheet 589

**Material:** 304 (A2) Stainless Steel. High temperature rubber liner.  
**TPE 160:** -50°C to +160°C.

**stainless steel**



### Stainless Steel, High Temperature Liner

5557	Min Size mm
501-6SS	6
501-8SS	8
501-9SS	9
501-10SS	10
501-12SS	12
501-13SS	13
501-16SS	16
501-19SS	19
501-28SS	28
501-32SS	32
501-35SS	35
501-40SS	40
501-60SS	60

Tech Sheet 589

## M10 P Clips, 20mm Band

**Material:** Mild Steel Zinc Plated.  
High temperature rubber liner.  
**TPE 160:** -50°C to +160°C.



### Mild Steel Zinc Plated, High Temperature Liner

5557	Min Size mm
601-6	6
601-8	8
601-10	10
601-13	13
601-16	16
601-19	19
601-22	22
601-25	25
601-28	28
601-32	32
601-36	36
601-40	40
601-44	44
601-48	48
601-52	52

Tech Sheet 589

**Material:** Stainless Steel (BS304).  
High temperature rubber liner.  
**TPE 160:** -50°C to +160°C.

**stainless steel**



### Stainless Steel, High Temperature Liner

5557	Min Size mm
601-6SS	6
601-8SS	8
601-10SS	10
601-13SS	13
601-16SS	16
601-19SS	19
601-22SS	22
601-25SS	25
601-28SS	28
601-32SS	32
601-36SS	36
601-40SS	40
601-44SS	44
601-48SS	48
601-52SS	52

Tech Sheet 589

# CLIP PACKS



## P Clips Mild Steel Assorted Pack

- **Diameters:** 5mm, 6mm, 8mm, 10mm, 13mm, 16mm, 19mm, 21mm, 25mm, 29mm and 35mm
- Standard Liner:** TPE -30°C to +60°C



104 Assorted, Mild Steel Zinc Plated Clips

5557  
PCZRAB1

## P Clips Stainless Steel Assorted Pack

- **Diameters:** 5mm, 6mm, 8mm, 10mm, 13mm, 16mm, 19mm, 21mm, 25mm, 29mm and 35mm
- Standard Liner:** TPE -30°C to +60°C

stainless steel



104 Assorted, 18/8 Marine, Quality BS304 Stainless Steel Clips

5557  
PCSRAB1

## Assorted Kits

### Contents:

#### Mild Steel

Size	Quantity
4-5mm	10
6mm	10
8mm	7
9mm	7
10mm	6
12mm	3
14mm	3
16mm	3
18mm	2
20mm	2



#### Stainless Steel

Size	Quantity
5mm	10
6mm	9
8mm	7
9mm	6
10mm	6
12mm	3
14mm	3
16mm	3
18mm	2
20mm	2



### P Clips

5559	Material
PCLIP-KIT-MS	Mild Steel
PCLIP-KIT-SS	Stainless Steel

Tech Sheet 20468

# NORMA



For Pipe Repair Couplings  
see page 1557



# CLAMPS & HOSE CLIPS



## NORMA® P Type Pipe Clip

- EPDM Rubber Sleeve
- Vibration Damping
- Fixing Hole For M6 Bolt



Mild Steel Alu-Zinc Plated,  
12mm Band Width

7777	To Suit Hose OD mm
NOR-RLGUP-5	5
NOR-RLGUP-6	6
NOR-RLGUP-8	8
NOR-RLGUP-9	9
NOR-RLGUP-10	10
NOR-RLGUP-12	12
NOR-RLGUP-13	13
NOR-RLGUP-16	16
NOR-RLGUP-19	19
NOR-RLGUP-22	22
NOR-RLGUP-25	25
NOR-RLGUP-28	28
NOR-RLGUP-29	29
NOR-RLGUP-32	32
NOR-RLGUP-35	35
NOR-RLGUP-40	40
NOR-RLGUP-44	44

## NORMA® P Type HD Pipe Clip



Mild Steel Zinc Plated,  
15mm Band Width

7777	To Suit Hose OD mm
NOR-RSGUP-6	6
NOR-RSGUP-8	8
NOR-RSGUP-10	10
NOR-RSGUP-12	12
NOR-RSGUP-13	13
NOR-RSGUP-16	16
NOR-RSGUP-19	19
NOR-RSGUP-21	21
NOR-RSGUP-22	22
NOR-RSGUP-25	25
NOR-RSGUP-28	28
NOR-RSGUP-30	30
NOR-RSGUP-32	32
NOR-RSGUP-35	35

## NORMA® U Type HD Pipe Clip



Mild Steel Zinc Plated,  
15mm Band Width

7777	To Suit Hose OD mm
NOR-RSGUU-6	6
NOR-RSGUU-12	12
NOR-RSGUU-13	13
NOR-RSGUU-16	16
NOR-RSGUU-19	19
NOR-RSGUU-21	21
NOR-RSGUU-22	22
NOR-RSGUU-25	25
NOR-RSGUU-28	28
NOR-RSGUU-30	30
NOR-RSGUU-35	35

## Box Set Clips

Part No.	Min Size	Max Size	Band Width mm	Qty
NOR-000	8	12	9	24
NOR-M00	10	16	9	22
NOR-00	12	22	9	24
NOR-0X	16	27	12	24
NOR-1A	20	32	12	10
NOR-1	25	40	12	16

## Wall Mounted Display Dispenser

Part No.	Min Size	Max Size	Band Width mm	Qty
NOR-000	8	12	9	10
NOR-M00	10	16	9	10
NOR-00	12	22	9	10
NOR-0	16	27	12	8
NOR-1A	20	32	12	8
NOR-1	25	40	12	8
NOR-2A	35	50	12	8
NOR-2	40	60	12	8
NOR-3	50	70	12	8



With 78 Clips

7777
NOR-888000080



With 120 Clips

7777
NOR-888000003

## Pipe Clips

Die Cast.



### Screw to Wall, Brass

Q245	OD mm
EPS-S015-S	15
EPS-S022-S	22
EPS-S028-S	28
EPS-S035-S	35
EPS-S042-S	42
EPS-S054-S	54

Die Cast.



### Screw to Wall, Chrome Plated, Brass

Q245	OD mm
EPS-S015CP-S	15
EPS-S022CP-S	22
EPS-S028CP-S	28
EPS-S035CP-S	35
EPS-S042CP-S	42
EPS-S054CP-S	54

### Pressed Screw-On, Brass



Q245	OD mm
EPS-SOPB12-S	12
EPS-SOPB15-S	15
EPS-SOPB22-S	22
EPS-SOPB28-S	28
EPS-SOPB35-S	35

### Pressed Screw-On, Chrome Plated



Q245	OD mm
EPS-SOPB15CP-S	15
EPS-SOPB22CP-S	22
EPS-SOPB28CP-S	28
EPS-SOPB35CP-S	35

M10 Threads.



### Hospital, Brass

Q245	OD mm
EPS-HB15-S	15
EPS-HB22-S	22
EPS-HB28-S	28
EPS-HB35-S	35
EPS-HB42-S	42
EPS-HB54-S	54

M10 Threads.



### Hospital, Chrome Plated

Q245	OD mm
EPS-HB15CP-S	15
EPS-HB22CP-S	22
EPS-HB28CP-S	28
EPS-HB42CP-S	42

Die Cast

M10 Threads.



### Single Munsen Ring, Brass

Q245	OD mm
EPS-MR15-S	15
EPS-MR22-S	22
EPS-MR28-S	28
EPS-MR35-S	35
EPS-MR42-S	42
EPS-MR54-S	54
EPS-MR67-S	67
EPS-MR76-S	76

Die Cast

M10 Threads.



### Single Munsen Ring, Chrome Plated

Q245	OD mm
EPS-MR15CP-S	15
EPS-MR22CP-S	22
EPS-MR28CP-S	28
EPS-MR35CP-S	35
EPS-MR42CP-S	42
EPS-MR54CP-S	54

Die Cast

M10 Threads.



### Double Munsen Ring, Brass

Q245	OD mm
EPS-MR15D-S	15
EPS-MR22D-S	22
EPS-MR35D-S	35
EPS-MR54D-S	54

## Back Plates



### M10, Male

Q245	Finish
EPS-MP10-S	Brass
EPS-MP10CP-S	Chrome Plated



### M10, Female

Q245	Finish
EPS-FP10-S	Brass
EPS-FP10CP-S	Chrome Plated

# BSP PIPE CLIPS & BACK PLATES



## Pipe Clips



1/4" BSPP, Dual Purpose, Brass

0245	OD mm
EPS-DPBSP15-S	15
EPS-DPBSP22-S	22
EPS-DPBSP28-S	28
EPS-DPBSP35-S	35
EPS-DPBSP42-S	42
EPS-DPBSP54-S	54



1/4" BSPP, Dual Purpose, Chrome Plated

0245	OD mm
EPS-DPBSP15CP-S	15
EPS-DPBSP28CP-S	28
EPS-DPBSP35CP-S	35



Single Munsen Ring, Brass, BSPP

0245	OD mm	Thread
EPS-MRBSP15-S	15	1/4"
EPS-MRBSP22-S	22	1/4"
EPS-MRBSP28-S	28	1/4"
EPS-MRBSP35-S	35	1/4"
EPS-MRBSP67-S	67	3/8"
EPS-MRBSP76-S	76	1/2"



1/4" BSPP, Single Munsen Ring, Chrome Plated

0245	OD mm
EPS-MRBSP35CP-S	35



Double Munsen Ring, Brass, BSPP

0245	OD mm	Thread
EPS-MRBSP35D-S	35	1/4"
EPS-MRBSP54D-S	54	3/4"

## Copper Saddle Clips



0245	OD mm	Description
EPS-CS10-S	10	-
EPS-CS15-S	15	-
EPS-CS215-S	15	2 Piece
EPS-CS22-S	22	-
EPS-CS28-S	28	-
EPS-CS35-S	35	-
EPS-CS42-S	42	-
EPS-CS54-S	54	-

## Chrome Plated Saddle Clips



1 Piece

0245	OD mm
CS15CP-S	15
CS22CP-S	22



2 Piece

0245	OD mm
CS215CP-S	15

## Steel Saddle Clips



0245	Nominal Bore OD
SSB12-S	1/2"
SSB34-S	3/4"
SSB1-S	1"
SSB114-S	1.1/4"
SSB112-S	1.1/2"
SSB2-S	2"

For Copper Tube  
see page 1213



## Mild Steel Saddle Clips

- Bag of 100
- Mild steel zinc plated
- Sizes up to 10mm have 4.8mm fixing hole

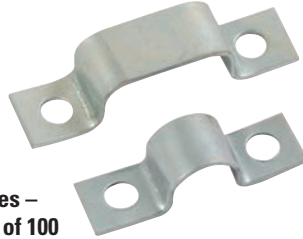


**Half Saddles – Light, Bag of 100**

5559	OD mm	No of Tubes
A940040-1	4	1
A940050-1	5	1
A940060-1	6	1
A940070-1	7	1
A940080-1	8	1
A940100-1	10	1
A940120-1	12	1
A940160-1	16	1
A940040-2	4	2
A940050-2	5	2
A940060-2	6	2
A940080-2	8	2
A940100-2	10	2
A940120-2	12	2

Tech Sheet 20456

- Sizes 12mm and 16mm have 5.8mm fixing hole
- DIN 72571 or 72573



**Full Saddles – Light, Bag of 100**

5559	OD mm	No of Tubes
C940040-1	4	1
C940050-1	5	1
C940060-1	6	1
C940070-1	7	1
C940080-1	8	1
C940100-1	10	1
C940120-1	12	1
C940040-2	4	2
C940050-2	5	2
C940080-2	8	2
C940100-2	10	2

Tech Sheet 20456

- Mild steel zinc plated
- Sizes up to 19mm have 6.6mm fixing hole
- Sizes 23mm to 33mm have 9.0mm fixing hole
- DIN 1596



**Half Saddles – Heavy**

5559	OD mm	No of Tubes	Quantity
H940070-1	7	1	50
H940090-1	9	1	50
H940130-1	13	1	50
H940155-1	15.5	1	50
H940190-1	19	1	50
H940230-1	23	1	25
H940260-1	26	1	25
H940285-1	28.5	1	25
H940310-1	31	1	25

Tech Sheet 20456

# PIPE FIXINGS

## Pipe Clips



**Snap-in Open, Single, Pack of 100**

5559	Bore Size mm
OPS-15	15
OPS-22	22
OPS-28	28

## Tube Clips



**Nylon, 10 per Strip**

0224	To Suit Plastic Pipe OD mm
1824431001	8

## Nail Clips



**Universal, White, Pack of 100**

5559	Bore Size mm	Nail Size mm
NCW-15	15	Ø2.5 x 45
NCW-22	22	Ø2.5 x 50
NCW-28	28	Ø2.5 x 55



**Universal, Grey, Pack of 100**

5559	Bore Size mm	Nail Size mm
NCG-22	22	Ø2.5 x 50

## Pipe Clamps



### Unlined, M8/M10/M12

5555	Bore Size mm	Thread
APPC20	20-25	M10
APPC31	31-38	M10
APPC40	40-46	M10
APPC52	52-56	M8
APPC57	57-62	M10
APPC63	63-66	M10
APPC67	67-71	M10
APPC72	72-75	M10
APPC76	76-81	M10
APPC89	89-94	M10
APPC95	95-102	M10
APPC108	108-117	M10
APPC176	176-182	M12

### Unlined Duel M8/M10 Thread

5555	Bore Size mm	Thread
ULC38/43	38-43	M8/M10
ULC47/51	47-51	M8/M10
ULC159/166	159-166	M8/M10

Fire resistance- Class B2  
Insulating Lining According to DIN4109  
Max Recommended Load- 200Kg

Working Temperature:  
-40°C to +100°C



### EPDM Rubber Lined, M8/M10

5559	Bore Size mm	Thread
APIPC14	15-19	M10
APIPC20	20-24	M8
APIPC26	23-28	M10
APIPC32	31-36	M10
APIPC40	38-44	M10
APIPC48	44-50	M10
APIPC54	54-58	M10
APIPC58	59-65	M8
APIPC68	62-67	M10
APIPC72	74-80	M10
APIPC88	83-93	M10
APIPC112	108-118	M10
APIPC137	133-143	M10
APIPC159	159-169	M10

Tech Sheet 20406

### EPDM Rubber Lined Duel M8/M10 Thread

5555	Bore Size mm	Thread
RLC125/130	125-130	M8/M10
RLC148/152	148-152	M8/M10

Tech Sheet 20406

Fire resistance- Class B2  
Insulating Lining According to DIN4109



### Rapid EPDM Rubber Lined, M8/M10

5559	Bore Size mm
APRC13	12-16
APRC20	20-23
APRC25	26-30

stainless steel



### Swivel Hanger

5555	Thread
APSHM10	M10

Tech Sheet 20751



For **Studding**  
see page **1385**





## Wall or Ceiling Mounted Pipe Clips

### Advantages

- With retaining ring
- Close fitting possible
- Suitable for high loads and temperatures
- Electrolytically zinc plated
- BSU clips are designed for mounting steel pipes to the wall or ceiling



### BSF Clip

0713	Thread	Bore Size mm
38671	M8-M10	13-17.5
38672	M8-M10	21-25.5
38673	M8-M10	26.5-30.5
38674	M8-M10	33.5-38.5
38675	M8-M10	41.5-47
38676	M8-M10	48-54
38677	M8-M10	56-62.5
38678	M8-M10	62.5-69.5
38679	M8-M10	69.5-76.5
38680	M8-M10	77.5-84
38681	M8-M10	85-92.5
38682	M8-M10	93-100.5
38683	M8-M10	101.5-110
38684	M8-M10	110-117.5
38685	M8-M10	119.5-127.5
38686	M8-M10	127.5-133.5

- BSI clips are rubber lined universal clips for mounting pipes to the wall or ceiling

### Advantages:

- Fitted with two bolts with anti-loss ring
- Bolt with slot and cross head
- Reinforcement grooves ensure that BSI clips maintain their shape
- Noise suppression up to 17dB(A)
- Electrolytically zinc plated



 Working Temperature:  
-40°C to +120°C

### BSI, EPDM Rubber Lined

0713	Thread	Bore Size mm
39000	M8-M10	12-14
39001	M8-M10	15-19
39002	M8-M10	20-25
39003	M8-M10	26-30
39004	M8-M10	32-36
39005	M8-M10	38-43
39006	M8-M10	44-49
39007	M8-M10	50-55
39008	M8-M10	56-61
39009	M8-M10	62-67
39010	M8-M10	68-73
39011	M8-M10	75-80
39012	M8-M10	82-86
39013	M8-M10	87-92
39014	M8-M10	95-102
39015	M8-M10	108-116
39016	M8-M10	121-127
39017	M8-M10	131-141
39018	M8-M10	159-163
39019	M8-M10	165-168
39020	M8-M10	192-202
39022	M8-M10	210-220

Tech Sheet 68173

### Advantages:

- With retaining ring
- Close fitting possible
- Bolt with slot and cross head
- Suitable for high loads and temperatures
- Electrolytically zinc plated



### BSU, Unlined

0713	Thread	Bore Size mm
38270	M8-M10	15-18
38271	M8-M10	20-25
38272	M8-M10	26-30
38273	M8-M10	32-36
38274	M8-M10	38-43
38275	M8-M10	44-49
38276	M8-M10	56-61
38277	M8-M10	75-80
38278	M8-M10	87-92
38279	M8-M10	108-116
38282	M10-M12	108-116
38283	M10-M12	131-141
38284	M10-M12	165-169

Tech Sheet 68177

- Stainless steel universal clips with rubber strips for mounting pipes to the wall or ceiling
- For use in situations where stainless steel mounting material is desired or required, such as food processing facilities, laboratories, the chemical industry, etc.

 Working Temperature:  
-40°C to +120°C

### Advantages:

- Suitable for short-distance mounting
- Noise suppression up to 17dB(A)
- Electrolytically zinc plated

stainless steel



### BRS-A, EPDM Rubber Lined, Stainless Steel

0713	Thread	Bore Size mm
38451	M8-M10	12-14
38452	M8-M10	15-19
38453	M8-M10	20-25
38454	M8-M10	26-30
38455	M8-M10	32-36
38456	M8-M10	38-43
38457	M8-M10	44-49
38458	M8-M10	50-55
38459	M8-M10	56-61
38460	M8-M10	62-67
38461	M8-M10	68-73
38462	M8-M10	75-80
38463	M8-M10	82-86
38464	M8-M10	87-92
38465	M8-M10	95-102
38467	M8-M10	121-127
38468	M8-M10	131-141
38469	M8-M10	159-163
38470	M8-M10	165-169
38471	M8-M10	192-202
38473	M8-M10	210-220

Tech Sheet 68175

# PIPE CLIPS & FIXING SYSTEMS

## Wall or Ceiling Mounted Pipe Clips

- Stainless steel universal clips for mounting stainless steel pipes to the wall or ceiling
- For use in situations where stainless steel mounting material is desired or required, such as food processing facilities, laboratories, the chemical industry, etc.

**Advantages:**

- Suitable for short-distance mounting

**stainless steel**



### BRS, Unlined, Stainless Steel

0713	Thread	Bore Size mm
38475	M8-M10	8-10
38476	M8-M10	12-14
38477	M8-M10	15-19
38478	M8-M10	20-25
38479	M8-M10	26-30
38480	M8-M10	32-36
38481	M8-M10	38-42
38482	M8-M10	44-49
38483	M8-M10	50-55
38484	M8-M10	56-61
38485	M8-M10	62-67
38486	M8-M10	68-73
38487	M8-M10	75-80
38488	M8-M10	82-86
38489	M8-M10	87-92
38490	M8-M10	95-102
38491	M8-M10	108-116
38492	M8-M10	121-127
38493	M8-M10	131-141
38494	M8-M10	159-163
38495	M8-M10	165-169
38496	M8-M10	192-202
38497	M8-M10	210-220

Tech Sheet 68176

BSK-I clips are designed for plastic pipes with special TPE (thermoplastic elastomer) lining.

The BSK-I clip has easily removable plastic spacers between the two clip halves and can be transformed into a clenching clip without the need for tools.

**Advantages:**

- Special TPE lining with excellent low friction properties
- Transformable from sliding to clamping with easily removable spacer
- Fast assembly thanks to the patented click-spring locking system
- Noise reduction: 20 dB(A) with spacer, 18 dB(A) without spacer
- UV resistant
- Electronically zinc plated

**Working Temperature:**  
-20°C to +100°C



### BSK-I Clip Range

0713	Thread	Bore Size mm
37307	M8	63
37359	M10	75
37368	M10	250

Tech Sheet 68756

- BSI-HDI clips are rubber lined, hot dip galvanized universal clips for mounting pipes to the wall or ceiling

**Working Temperature:**  
-40°C to +120°C

**Advantages:**

- The clip has one or more strengthening ribs to achieve a strong working load
- Close fitting possible
- Noise suppression up to 17dB(A)



### BSI-HDI, Hot Dipped Galvanized

0713	Thread	Bore Size mm
38571	M8-M10	12-14
38572	M8-M10	15-19
38573	M8-M10	20-25
38574	M8-M10	26-30
38575	M8-M10	32-36
38576	M8-M10	38-43
38579	M8-M10	56-61
38580	M8-M10	62-67
38581	M8-M10	68-73
38582	M8-M10	75-80
38584	M8-M10	87-92
38586	M8-M10	108-116
38587	M8-M10	121-127
38588	M8-M10	131-141
38590	M8-M10	165-168
38592	M8-M10	210-220

Tech Sheet 68174

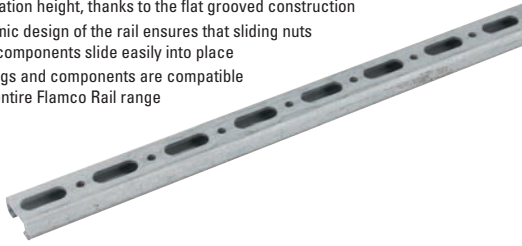


**For Hydraulic Tubing**  
see page 183

## Mounting

### Advantages of Flamco Rail:

- Short installation height, thanks to the flat grooved construction
- The ergonomic design of the rail ensures that sliding nuts and similar components slide easily into place
- Flamco fittings and components are compatible across the entire Flamco Rail range



### R1 Mounting Rail

0713	Length mm
50010	2000
Tech Sheet 68180	

- Neatly finishes off the ends of all types of Flamco Rail
- Quick and easy to push into position



### RD1 Mounting Rail End Cap

0713	To Suit
50501	50010

### Product Features:

- Easy mounting by pushing and turning the unit in the rail 45° clockwise
- No-return stop
- Reduced installation time
- Electrolytically zinc plated
- No loose parts such as studs, washers and nuts



### Wall Mounting Rail Connection

0713	Breaking Strain
71806	1000 Newton
Tech Sheet 68179	



### ClickEasy Sliding Nut

0713	Thread
80360	M6
80361	M8
80362	M10



### ClickEasy HBS

0713	Thread	Length mm
80381	M10	50

For mounting Flamco rail to steel without welding or drilling



### RB1 Rail Girder Clip

0713	Thread	Max Extended mm
80601	M8 x 55	15



For **Ridgid Strut Slayer** see page 1744





# QUICK RELEASE BAND STRAPS & BANDING

## Jubilee® Quick Release Band Straps

Jubilee® quick release straps are used in a wide range of applications where a closed installation requires the clamp to be opened fully for positioning.

Examples include sign fixing, cable retention, repairs and heating, ventilation and air conditioning.



### Mild Steel, Zinc Plated, 11mm Wide

6666	Min Size mm	Max Size mm
CAS050MS	35	50
CAS075MS	45	75
CAS100MS	50	100
CAS120MS	50	120
CAS150MS	50	150
CAS200MS	50	200
CAS225MS	50	225
CAS250MS	50	250
CAS275MS	50	275
CAS300MS	50	300
CAS330MS	50	330
CAS355MS	50	355
CAS380MS	50	380
CAS405MS	50	405
CAS455MS	50	455
CAS505MS	50	505
CAS555MS	50	555
CAS605MS	50	605
CAS710MS	50	710
CAS910MS	50	910
CAS965MS	50	965



### 304 Stainless Steel, 7mm Wide

6666	Min Size mm	Max Size mm
FLS050SS	35	50
FLS075SS	45	75
FLS100SS	50	100
FLS120SS	50	120
FLS150SS	50	150
FLS225SS	50	225
FLS250SS	50	250
FLS275SS	50	275
FLS300SS	50	300
FLS330SS	50	330
FLS380SS	50	380
FLS405SS	50	405



### 304 Stainless Steel, 11mm Wide, W4

6666	Min Size mm	Max Size mm
CAS050SS	35	50
CAS075SS	45	75
CAS100SS	50	100
CAS120SS	50	120
CAS150SS	50	150
CAS175SS	50	175
CAS225SS	50	225
CAS250SS	50	250
CAS275SS	50	275
CAS300SS	50	300
CAS330SS	50	330
CAS355SS	50	355
CAS380SS	50	380
CAS405SS	50	405
CAS555SS	50	555
CAS605SS	50	605
CAS710SS	50	710
CAS810SS	50	810
CAS910SS	50	910
CAS965SS	50	965

Tech Sheet 60247

## Jubilee® Multiband

Construct your own fastener – cut to size and choose from a choice of standard slotted screw or captive screw. Banding available in 11mm mild steel zinc-plated or 11mm stainless steel (304).

### 10 Metre Lengths

6666	Band Width mm
2025-3720	11

Tech Sheet 1942



### 30 Metre Lengths

6666	Band Width mm
2025-3738	11

Tech Sheet 1942



### Housing & Screws, 25 Sets, 11mm

6666
2025-3746



### 7mm Stainless Steel 304

6666	Description	Length m/Sets
MB1601	7mm Multiband	25
MB1603	Flip Lock Housing/Screws	25 Sets

### 11mm Mild Steel Zinc Plated

6666	Description	Length m/Sets
MB1705	Housing/Allen Socket Screws	25 Sets
MB1708	11mm Handy Pack	10m + 25 x Housings/ Screws

### 11mm Stainless Steel

6666	Description	Length m/Sets
MB1802	11mm Multiband	30 (m)
MB1803	Housing/Screws	25 Sets
MB1804	Housing/Allen Socket Screws	25 Sets
MB1806	11mm Handy Pack	10m + 25 x Housings/ Screws

# BANDING SYSTEM & TIE WRAPS

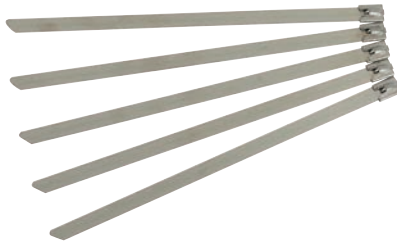
## 304 Stainless Steel Banding System

To use, take one end of the cut banding and bend back 1/2". Take a self locking head and slide it the entire length of the band until it reaches the bend. Bend the tail flat against the bottom of the banding head to complete assembly.



0040	Type	Length Metres	Width mm	Box Quantity
SBS-76L	Band	76	4.6	1
SBS-76H	Band	76	7.9	1
SBH-L	Locking Head	-	4.6	100
SBH-H	Locking Head	-	7.9	100

## 304 Stainless Steel Cable Ties



0040	Length mm	Width mm
STW-201L	201	4.6
STW-362L	362	4.6
STW-838H	838	7.9

## Polyamide 6/6 Nylon, Cable Ties

Resistant to UV, oils, grease, salt (DNV Marine approved) and light acids. UL approved (E97527).



### Natural, Pack of 100

0040	Width mm	Length mm
GP-025-0100N	2.5	100
GP-025-0200N	2.5	200
GP-036-0140N	3.6	140
GP-036-0200N	3.6	200
GP-036-0300N	3.6	300
GP-048-0120N	4.8	120
GP-048-0160N	4.8	160
GP-048-0200N	4.8	200
GP-048-0300N	4.8	300
GP-048-0368N	4.8	368
GP-076-0200N	7.6	200
GP-076-0240N	7.6	240
GP-076-0300N	7.6	300
GP-076-0368N	7.6	368
GP-090-0430N	9	430
GP-090-0530N	9	530

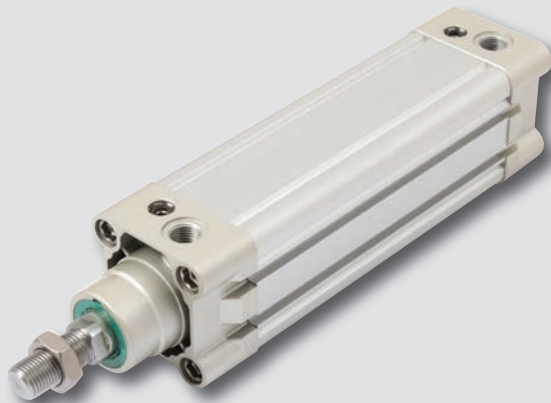
Tech Sheet 20413



### Black, Pack of 100

0040	Width mm	Length mm
GP-025-0100B	2.5	100
GP-025-0200B	2.5	200
GP-036-0140B	3.6	140
GP-036-0200B	3.6	200
GP-036-0300B	3.6	300
GP-048-0120B	4.8	120
GP-048-0160B	4.8	160
GP-048-0200B	4.8	200
GP-048-0300B	4.8	300
GP-048-0368B	4.8	368
GP-076-0200B	7.6	200
GP-076-0240B	7.6	240
GP-076-0300B	7.6	300
GP-076-0368B	7.6	368
GP-090-0430B	9	430
GP-090-0530B	9	530

Tech Sheet 20413



For ISO 15552 Cylinders  
see pages 478-486



# STEEL STRAPPING & ACCESSORIES



**Band-It** patented easy scale makes the **Band-It** clamping system the industry's favourite for over 60 years. All **Band-It** sizes feature fully rounded smooth edges for safety and easy installation.

## Band-It Clamping Tool

Used to apply Band-It Band, Tote and Buckles.



### Built-in Cutter

5561
C001

## Junior Preformed Clamp Tool

For use with Band-It Junior smooth ID preformed clamps.



### Built-in Cutter

5561
C00269



## 201 Band-It Band Stainless Steel Strapping

stainless steel



### 30.5 Metres

5561	Band Width mm	Band Thickness mm
C202	6.35	0.51
C203	9.53	0.63
C204	12.70	0.76
C205	15.88	0.76
C206	19.05	0.76

## 201 Band-It Band Buckles

Designed to accommodate both single and double wrap clamps.

stainless steel



### Stainless Steel, Standard, Pack of 100

5561	Band Width mm
C252	6.35
C253	9.53
C254	12.70
C255	15.88
C256	19.05

## 201 Band-It Tote Stainless Steel Strapping

Supplied in handy waterproof packaging. Colour coded for easy identification

stainless steel



### 30.5 Metres

5561	Band Width mm	Band Thickness mm
C203Y	9.53	0.63
C204B	12.70	0.76
C205G	15.88	0.76
C206R	19.05	0.76

## Band-It Valustrap

Non-magnetic stainless steel strapping used with Valuclips for securing signs, cable-bundling, pipe insulation and a variety of other lightweight applications.

stainless steel



### 30.5 Metres

5561	Band Width mm	Band Thickness mm
C133	9.60	0.38
C134	12.70	0.38
C135	15.90	0.38
C136	19.10	0.38

## Valuclips



### Pack of 100

5561	Band Width mm
C153	9.53
C154	12.70
C156	19.05

## Junior Preformed Clamps

Band-It patented easy scale makes the Band-It clamping system the industry's favourite for over 60 years.

All Band-It sizes feature fully rounded smooth edges for safety and easy installation.

stainless steel



### 201 Stainless Steel

5561	ID	Band Width mm	Band Thickness mm
JS240	3/4"	6.4	0.51
JS242	1"	6.4	0.51
JS241	1.3/8"	6.4	0.51
JS252	1.1/2"	6.4	0.51
JS253	2"	6.4	0.51
JS256	2.3/4"	6.4	0.51
JS244	3"	6.4	0.51
JS257	3.1/2"	6.4	0.51
JS259	4.1/2"	6.4	0.51
JS201	13/16"	9.5	0.64
JS243	1"	9.5	0.64
JS202	1.3/8"	9.5	0.64
JS245	2"	9.5	0.64
JS246	3"	9.5	0.64
JS255	3.1/4"	9.5	0.64
JS203	1"	12.7	0.76
JS204	1.1/4"	12.7	0.76
JS236	1.3/4"	12.7	0.76
JS230	2.3/4"	12.7	0.76
JS205	1.1/2"	15.9	0.76
JS206	1.3/4"	15.9	0.76
JS207	2"	15.9	0.76
JS208	2.1/4"	15.9	0.76
JS209	2.1/2"	15.9	0.76
JS227	2"	19.1	0.76
JS210	2.3/4"	19.1	0.76
JS211	3"	19.1	0.76
JS212	3.1/2"	19.1	0.76
JS213	4"	19.1	0.76
JS214	4.1/2"	19.1	0.76
JS215	5"	19.1	0.76
JS216	6"	19.1	0.76

## All Purpose Band

Band-It All Purpose Band offers versatility within varying temperatures and applications. All Purpose Band is ideal for bending and forming around virtually any section or shape. Resistant to physical abrasion, UV light and corrosive environments for many applications where plastic cable ties are simply inadequate or even dangerous.

- 316 stainless steel or galvanised carbon steel
- Pre-punched holes make fastening quick and easy
- Easy to form around any section
- Flame retardant low smoke PPA 571 coating
- Thick coating; kind to hands and cables
- Halogen free
- Simple fastening with nuts, bolts or screws
- Three widths available
- Standard black coating; other colours are available on request



### 316 Stainless Steel, Coated

stainless steel

5561	Band Width mm	Band Thickness mm	Dia of Hole mm	Length mm
AE466	17	1.3	7	10
AE467	26	1.3	8	10
AE475	12	1.3	5	25
AE476	17	1.3	7	25
AE477	26	1.3	8	25

Tech Sheet 68231

### 316 Stainless Steel, Uncoated

stainless steel

5561	Band Width mm	Band Thickness mm	Dia of Hole mm	Length mm
AE407	26	0.76	8	10
AE425	12	0.76	5	25
AE426	17	0.76	7	25
AE427	26	0.76	8	25

Tech Sheet 68231

### Galvanised Carbon Steel, Coated

5561	Band Width mm	Band Thickness mm	Dia of Hole mm	Length mm
AE566	17	1.3	7	10
AE567	26	1.3	8	10
AE575	12	1.3	5	25
AE576	17	1.3	7	25
AE577	26	1.3	8	25

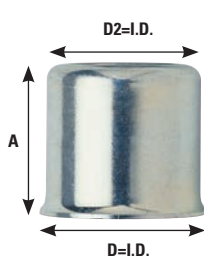
Tech Sheet 68231

### Galvanised Carbon Steel, Uncoated

5561	Band Width mm	Band Thickness mm	Dia of Hole mm	Length mm
AE505	12	0.76	5	10
AE506	17	0.76	7	10
AE507	26	0.76	8	10

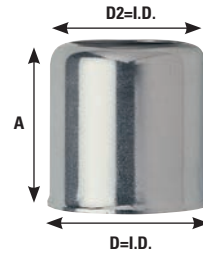
Tech Sheet 68231

## Mild Steel Hose Ferrules



5563	Length (D) mm	Length (A) mm	Length (D2) mm
SHF-10	10.1	20	7.5
SHF-11	11.1	20	8.5
SHF-12	12.1	20	8.5
SHF-13	13.1	20	8.8
SHF-14	14.1	20	11
SHF-15	15.1	20	12.5
SHF-16	16.1	20	12.5
SHF-17	17.1	20	14.5
SHF-18	18.1	20	14.5
SHF-19	19.1	21	14.8
SHF-20	20.1	22	14.8
SHF-28	28.1	32	20.5

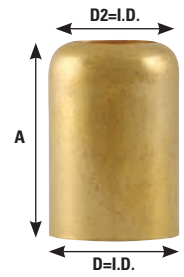
stainless steel



Grade 303

5563	Length (D) mm	Length (A) mm	Length (D2) mm
STF-11	11.1	20	8.5
STF-12	12.1	20	8.5
STF-13	13.1	20	8.8
STF-14	14.1	20	11
STF-15	15.1	20	12.5
STF-17	17.1	20	14.5
STF-18	18.1	20	14.5
STF-22	22.1	22	15.5

## Brass Hose Ferrules



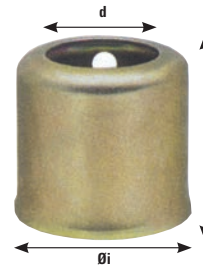
Type HF

5555	Length (D) mm	Length (A) mm	Length (D2) mm
HF7322	12.7	25.4	8.7
HF3588	14.3	19	9.4
HF7325	14.4	25.4	10.9
HF7326	15.1	25.4	11
HF7327	15.9	25.4	11.1
HF7328	16.7	25.4	11.1
HF7329	17.4	25.4	12.7
HF7330	18.2	25.4	12.7
HF7331	19.1	25.4	12.7
HF7332	19.8	25.4	12.7
HF7333	20.6	25.4	15.8
HF7244	22.2	22.5	17.6
HF1275	31.9	31.9	22.2

## Ferrules for Low Pressure Hoses

- Red hot steel, zinc-plated and yellow chromated
- Easy, fast and safe hose crimping with hand-operated assembly machines: SPR 333 (use LPH-12.5 to LPH-23) and SPR 500 (use LPH-25 to LPH-41)
- No danger of hurt, closed and unremovable connection
- For crimping of various hoses and fittings for different fluids

Maximum Working Pressure: 16 Bar



Steel

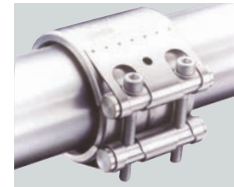
5555	I.D. Ø	To Suit Hose DIN20018	To Suit Hose Water	To Suit Hose PVC	l	d	Weight g
LPH-12.5	12.5	-	-	-	17	8.5	3
LPH-13.5	13.5	-	-	6 x 3	20	9.3	5
LPH-14.5	14.5	6 x 3.5	-	-	17	10	5
LPH-16	16.0	-	-	8 x 3	17	11.5	5
LPH-18	18.0	9 x 3.4	-	10 x 3	20	13.5	7
LPH-19	19.0	-	-	12 x 3	20	13.9	9
LPH-19.5	19.5	-	-	-	26	14.5	10
LPH-22	22.0	-	-	-	32	17.0	16
LPH-23	23.0	-	12 x 3	-	32	17.0	18
LPH-28	28.0	15 x 6	-	-	32	20.5	22
LPH-30	30.5	-	19 x 4	-	33	24.3	24
LPH-33	33.0	19 x 6	-	-	35	24.8	40
LPH-38	38.0	-	25 x 4.5	-	35	28.0	47
LPH-41	41.0	25 x 7	-	-	40	30.0	64

# PIPE REPAIR COUPLINGS

A World Leader in the design & supply of sealing, connecting & clamping solutions.

High Specification Stainless Steel Coupling for Repairing Leaks to Pressure Pipe

- Nitrile Sealing Sleeve
- Upto 16 bar Pressure Rating
- Double Lip Seal Design
- Suitable for Metal and Most Plastic Pipes



## Pipe Repair Couplings

- Easy assembly and disassembly
- Re-useable
- Patented double-lip seal
- Standard steel strip insert
- Suitable for both high pressure and vacuum applications



7788	Min Size mm	Max Size mm
NOR-FGRR355	34.5	35.5
NOR-FGRR429	39	42.9
NOR-FGRR45	43	45
NOR-FGRR488	45.5	48.8
NOR-FGRR549	53.6	54.9
NOR-FGRR576	55	57.6
NOR-FGRR609	57.7	60.9
NOR-FGRR74	72.6	74
NOR-FGRR769	74	76.9
NOR-FGRR85	83	85
NOR-FGRR896	85.1	89.8
NOR-FGRR1029	101	102.9
NOR-FGRR106	103	106
NOR-FGRR111	109	111
NOR-FGRR1154	112	115.4
NOR-FGRR156	153	156
NOR-FGRR170	166	170

## Connect Grip Pipe Couplings

- Axial pipe coupling for connecting unrestrained metal pipes
- Strip insert included as standard for seal protection
- Unique double lip sealing system
- Progressive locking effect
- Rapid installation time
- Up to 16 bar (nominal) pressure rating



stainless steel

### Clamps Supplied in W2 Material

7788	Min Size mm	Max Size mm
NOR-05788400026	26.4	27.5
NOR-05788400033	33	34.3
NOR-05788400048	47.6	50.5
NOR-05788400060	59.5	61
NOR-05788400076	75.2	77
NOR-05788400088	87	89.9
NOR-05788400114	113	115
NOR-05788400139	138.1	141.6
NOR-05788400168	166.5	170.1
NOR-05778400219	216	221

## Connect Flex Pipe Couplings

- Axial pipe coupling for connecting restrained metal and/or plastic pipes
- Strip insert included as standard for seal protection
- Unique double lip sealing system
- Accommodates changes in pipe length and misalignment
- Rapid installation time
- Up to 16 bar (nominal) pressure rating



stainless steel

### Clamps Supplied in W2 Material

7788	Min Size mm	Max Size mm
NOR-05738400026	26.5	27.4
NOR-05738400033	33	34.3
NOR-05738400042	41.7	43
NOR-05738400048	47.6	50.5
NOR-05738400060	59.5	61
NOR-05738400076	75.2	77
NOR-05738400088	87	89.9
NOR-05738400114	113	115.5
NOR-05738400139	138.1	141.6
NOR-05738400168	166.5	170.1
NOR-05738400180	178	182
NOR-05738400193	192	196
NOR-05738400206	202	208
NOR-05738400219	216	221
NOR-05738400267	264	269
NOR-05738400355	352	359
NOR-05738400406	402	410
NOR-05738400508	505	510
NOR-05738400609	606	613

# CIRCLIPS KITS

## Circlip Kits

- NBR 70 material
- 1mtr lengths various sizes
- Cutting and bonding accessories included



### Assorted, 140 Pieces

5556	Description
0350003-8	External Circlips
0350004-6	Internal Circlips

### Ref 0350003-8

Ø	Quantity	Ø	Quantity	Ø	Quantity
-	-	-	-	24	20
5	200	15	100	25	20
8	200	16	100	28	20
9	200	17	50	30	20
10	200	18	50	30	20
11	100	19	50	38	10
12	100	20	50	40	10
13	100	21	50	42	10
14	100	22	20	45	10

### Ref 0350004-6

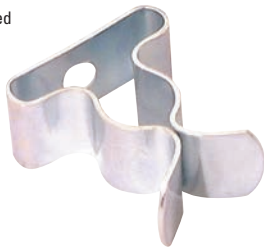
Ø	Quantity	Ø	Quantity	Ø	Quantity
-	-	-	-	30	20
8	200	17	100	32	20
9	200	19	100	35	20
10	200	20	50	40	20
12	200	21	50	40	20
13	200	21	50	42	10
14	100	24	50	47	10
15	100	26	50	58	10
16	100	28	20	60	10



# TOOL CLIPS, PEN & TOOL HOLDERS

## Tool Clips

- Steel Zinc Plated



### Closed Type

0108	Min Size mm	Max Size mm
TERR-80.06-2	6	7
TERR-80.10-2	10	12
TERR-80.13-2	13	14
TERR-80.16-2	16	19
TERR-80.19-2	19	21
TERR-80.25-2	25	27
TERR-80.28-2	28	31
TERR-80.38-3	38	40



### Open Type

0108	Min Size mm	Max Size mm
TERR-81.06-2	6	7
TERR-81.10-2	10	12
TERR-81.16-2	16	19
TERR-81.19-2	19	21
TERR-81.25-2	25	27
TERR-81.38-3	38	40

## Worm Drive Clips

- Powergrip range of high performance hose clamps manufactured to BS5315 - 1991 standard
- Kitemark accredited
- Mild steel with Alu-zinc coating for improved corrosion resistance



### Mild Steel

7777	Size Ref	Min Size mm	Max Size mm
WDC000	000	9.5	12
WDCM00	M00	11	16
WDC00	00	13	20
WDC0	0	16	22
WDC0X	0X	18	25
WDC1A	1A	22	30
WDC1	1	25	35
WDC1X	1X	30	40
WDC2A	2A	35	50
WDC2	2	40	55
WDC2X	2X	45	60
WDC3	3	55	70
WDC3X	3X	60	80
WDC4	4	70	90
WDC4X	4X	85	100
WDC5	5	90	120
WDC6	6	110	140
WDC7	7	130	160
WDC8	8	150	180
WDC9	9	175	205
WDC10	10	200	230
WDC11	11	225	255
WDC12	12	250	288
WDC13	13	275	305

## Pen & Pencil Clips

- Nickel Plated Steel
- These are used for Pens, Pencils and Special Measuring Tools in Brief Cases, Tool Boxes and Pockets



0108	Size mm	Type
TERR-90.02-2	7-15	Double

# HOSE CRIMPER

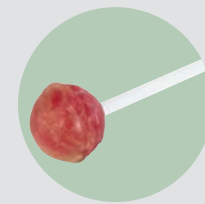
## Hose Crimper

Crimps 7/8" to 1.1/2" OD hose (1/2" to 1" ID).  
This crimper is sold without dies.



### Large Bore Hose Crimper

0108
CV501



For Thinking Sticks  
see page 262