

1 Hydraulics **3-284**

2 Hydraulic Quick Release Couplings **285-320**

3 Pneumatic Quick Release Couplings **321-406**

4 Monitor & Test **407-446**

5 Pneumatic & Vacuum **447-762**

6 Push-in Fittings & Tubing **763-918**

7 Valves & Actuation **919-1060**

8 Ring Main **1061-1136**

9 Hose Tails, Adaptors, Fittings & Manifolds **1137-1224**

10 Stainless Steel **1225-1332**

11 Malleable Iron **1333-1398**

12 Hose, Couplings, Ducting & Hose Reels **1399-1510**

13 Clips & Clamps **1511-1558**

14 Paint, Sprays & Adhesives **1559-1590**

15 Blow Guns, Vacuum & Nozzles **1591-1616**

16 Fuelling, Lubrication, Wash Down & Misting **1617-1696**

17 Compressors & Air Tools **1697-1726**

18 Hand Tools & PPE **1727-1765**

SECTION 15

Blow Guns, Vacuum & Nozzles

15.01 Blow Guns **1591-1610**

15.02 Air Jets, Movers, Knives & Amplifier **1611-1616**

SECTION 15

Blow Guns, Vacuum & Nozzles

15.01 Blow Guns

- Blow Guns
- Air Blow Guns
- Extended Air Blow Guns
- Blow Guns & Air Nozzles
- Blow/Vacuum Guns & Kits
- Drag-in Pump Kit



15.02 Air Jets, Movers, Knives & Amplifier

- Air Jets
- Blow Guns & Air Nozzles
- Air Movers
- Air Knives & Amplifier



Blow Guns

Features:

The FT Pro ASG-1 safety air blow gun has been developed to comply with all aspects of the OSHA standard for compressed air used for cleaning.

This standard reads: 'Today, the most common way to comply to this standard is to fit a tamper-proof regulator set at 29 PSI ahead of the blow gun. However, this is costly and can only be used when also using a safety nozzle'.

The FT Pro ASG-1 safety air gun provides an extremely cost effective solution; it is designed with Venturi holes in the nozzle which increase air volume and allow air to escape if the nozzle is dead-ended. This specially designed feature ensures less than 30 PSI passes through the nozzle, complying with the standard set by OSHA.

In addition, all the internal components are brass, ensuring a rust-free operation. Blow gun repairs are not necessary as O-rings are self-lubricating, preventing valve leakage.

Working Temperature:
-32°F to +275°F

Maximum Working Pressure
150 PSI

ASG-1 Safety Air Blow Gun

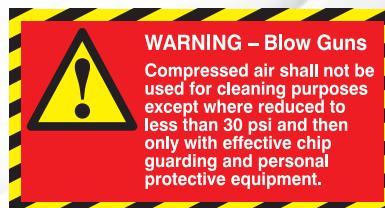
Red Handle, BSPT

0424	Thread
ASG-1	1/4"



Construction:

Body:	Die cast zinc
Internal	
Components:	Nickel-plated brass
Nozzle:	Brass
Decibel:	97
Thumb Grip:	Vinyl
Inlet:	R1/4
Flow:	310 L/min



BLOW GUN ACCESSORIES FOR ASG-1

Safety Nozzle

- Standard safety nozzle

0424
ST10
Tech Sheet 20332



Safety Booster

- Increases air volume by up to 33%, and still conforms to OSHA

0424
ST11
Tech Sheet 20332



Extension Nozzles

0424	Length
ST203	3"
ST206	6"
ST208	8"
ST210	10"
ST212	12"
ST216	16"
ST218	18"
ST224	24"
ST230	30"
ST236	36"



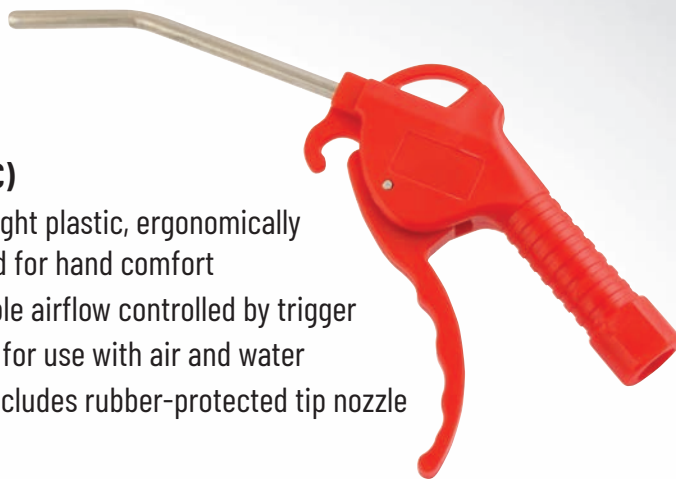
Rubber Tip

- Non safety nozzle
- For delicate surfaces that brass may damage

0424
SAT13



Air Blow Guns



BG5 (-PVC)

- Lightweight plastic, ergonomically designed for hand comfort
- Adjustable airflow controlled by trigger
- Suitable for use with air and water
- (-PVC) includes rubber-protected tip nozzle

DG-10

- Lightweight aluminium construction
- Adjustable airflow controlled by trigger
- Suitable for use with air, water and cleaning degreasers

BG-718

- Heavy-duty brass construction suitable for use in harsh environments
- Suitable for use with air and water

 **Working Temperature:**
0°C to +60°C

 **Maximum Working Pressure**
10 bar (150 PSI)

Air Blow Guns



BG5-PVC

BSPP Inlet

1305	Thread	Information
BG5	1/4"	—
BG5-PVC	1/4"	Includes PVC Tip

Tech Sheet 20335

Heavy-duty Brass Blow Gun



BG-718

BSPP Inlet

1305	Thread
BG-718	1/4"

2/2 Brass Lever/Spring Poppet Valves



BSPP

0090	Thread
PBBLH-3/8	3/8"

Air Blow Guns



BSPT Male

1305	Thread
DG-10	1/4"

Tech Sheet 10726

Air or Water Gun



3/4" Hose Tail Connection

1305	
ASW-1	Tech Sheet 60464

Air Engine Cleaning Guns



0.6 Litre Capacity, BSPT

1305	Thread
DG-10-EC	1/4"

Tech Sheet 20337



90°, BSPT

1305	Thread
DG-10-EK	1/4"

Tech Sheet 20338

EXTENDED AIR BLOW GUNS



- Plastic air inlet
- Plastic body
- Steel nozzle
- Thread: 1/4"
- BSPT Female

Maximum Pressure:
11 bar
Working Pressure:
6 bar

Air Blow Guns

1305	Length
LD04-1	4"
LD10-1	10"
LD13-1	13"
LD20-1	20"
LD40-1	40"

Tech Sheet 20421

PVC Tip for Extended Air Blow Gun

1305	
144194	



BLOW GUNS



Extension Nozzles



Plastic, BSPP Inlet

1308	Thread	Length mm
AK-13	1/4"	100
AK-300	1/4"	300
AK-600	1/4"	600
Tech Sheet 10783		

Standard Nozzles



Plastic, BSPP Inlet

1308	Thread
AN-13	1/4"
Tech Sheet 20789	

Safety Nozzles



Plastic, BSPP Inlet

1308	Thread
AL-13	1/4"
Tech Sheet 10784	

Nozzle 1/8" BSP



Plastic, 1/4" BSPP Inlet

1308	Thread
AI-13	1/4"
Tech Sheet 20788	

Low Noise Level Nozzles (63-73 DB)



Plastic, BSPP Inlet

1308	Thread
AF-13	1/4"
Tech Sheet 20790	

Replacement Nozzle

1308	To Suit
AR-12	AF-13

Safety Nozzles



Aluminium, BSPP Inlet

1308	Thread
AV-13	1/4"
Tech Sheet 10788	

Replacement Nozzle

1308	To Suit
VR-12	AV-13



Aluminium, BSPP Inlet

1308	Thread
AS-13	1/4"
Tech Sheet 10785	

Replacement Nozzle

1308	To Suit
SD-12	AS-13



Aluminium, BSPP Inlet

1308	Thread
AR-13	1/4"
Tech Sheet 20791	

Pressure Reducer



Fits Inlet on all Blow Guns, BSPP

1308	Thread	Air Pressure bar
DRV13/30	1/4"	3
DRV13/40	1/4"	4
DRV13/50	1/4"	5
DRV13/60	1/4"	6
Tech Sheet 1963		

Aluminium, BSPP Inlet

1308	To Suit
AA-13	1/4"

Replacement Nozzle

1308	To Suit
KD-12	AA-13
Tech Sheet 10786	

Aluminium, High Powered, Energy Saving Gun, BSPP Inlet



1308	Thread
AT-13	1/4"
Tech Sheet 20787	

BLOW GUNS



25 25 year warranty on the Air Boy® valve system

Working Temperature:
-10°C to +80°C

Maximum Working Pressure:
16 bar

Advised Working Pressure:
8 bar

Air Boy® Classic



1/4" BSPP, Bent Pipe

1307	Nozzle OD mm	LPM
140101-000	8	380
140102-000	6	330

Tech Sheet 60024



Trade Counter, 10 Pack

1307
140900-000



1/4" BSPP, Bent Pipe & Air Adjustment Screw

1307	Nozzle OD mm	LPM
140103-000	8	380
140104-000	6	330

Tech Sheet 60025



1/4" BSPP, Extended Bent Pipe

1307	Nozzle OD mm	Nozzle Length mm	LPM
140112B-000	8	300	380
140113B-000	8	500	380
140114B-000	8	1000	380

Tech Sheet 60026



1307
140100-000



1/4" BSPP, Extended Straight Pipe

1307	Nozzle OD mm	Nozzle Length mm	LPM
140112-000	8	300	380
140113-000	8	500	380
140114-000	8	1000	380

Tech Sheet 60026

Air Boy® Stainless



1/4" BSPP, Stainless Steel Bent Pipe

1307	Nozzle OD mm	LPM
140120-159	8	380

Tech Sheet 60027



1/4" BSPP, Stainless Steel Bent Pipe

1307	Nozzle OD mm	LPM
140120-000	8	380

Tech Sheet 60024

Super Silent Air Boy®



Working Temperature:
-10°C to +60°C

Maximum Working Pressure:
12 bar

High blowing force, low noise level

1/4" BSPP, Unblockable Stainless Steel Bent Pipe

1307	Nozzle OD mm	LPM
140141-000	8	330

Tech Sheet 60033



For Ear Protection
see page 1753



BLOW GUNS

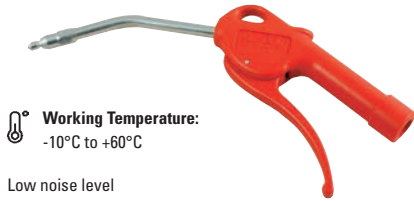
25 Year Warranty on the Air Boy® valve system

Working Temperature:
-10°C to +80°C

Maximum Working Pressure:
16 bar

Advised Working Pressure:
8 bar

Silent Air Boy®



Working Temperature:
-10°C to +60°C

Low noise level

1/4" BSPP, Unblockable Bent Pipe

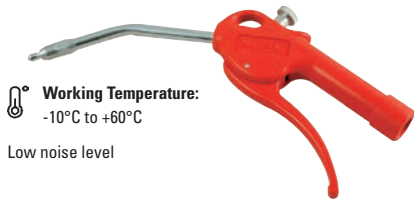
1307	Nozzle OD mm	LPM
140125-000	8	260
Tech Sheet 60031		



Low noise level

8mm, Bent Pipe with Shut Off

1307		
140128-000		



Working Temperature:
-10°C to +60°C

Low noise level

1/4" BSPP, Unblockable Bent Pipe & Air Adjustment Screw

1307	Nozzle OD mm	LPM
140135-000	8	260
Tech Sheet 60032		



Working Temperature:
-10°C to +60°C

Low noise level

1/4" BSPP, Unblockable Straight Pipe

1307	Nozzle OD mm	LPM
140126-000	6	260
Tech Sheet 60031		



Working Temperature:
-10°C to +60°C

Low noise level

1/4" BSPP, Unblockable Straight Pipe & Air Adjustment Screw

1307	Nozzle OD mm	LPM
140136-000	8	260
Tech Sheet 60032		



8mm with Extended Pipe & Shut Off

1307	Nozzle Length mm
140129-000	500

Air Boy® Anti-Block



1/4" BSPP, Unblockable Bent Pipe

1307	Nozzle OD mm	LPM
140106-000	6	330
Tech Sheet 60029		

Safety Air Boy®



1/4" BSPP, Bent Pipe, Automatic Pressure Reduction

1307	Nozzle OD mm	Pressure Reduction	LPM
140161-000	8	2	140
140171-000	8	3.5	220
Tech Sheet 60030			



1/4" BSPP, Straight Pipe, Automatic Pressure Reduction

1307	Nozzle OD mm	Pressure Reduction	LPM
140160-000	8	2	140
140170-000	8	3.5	220
Tech Sheet 60030			



For Respiratory Protection
see page 1755



BLOW GUNS



25 25 year warranty on the Air Boy® valve system

Working Temperature: -10°C to +80°C

Maximum Working Pressure: 16 bar

Advised Working Pressure: 8 bar

Air Boy® Turbo



1/4" BSPP, Unblockable Bent Pipe & Venturi Nozzle

1307	OD mm	LPM
140110-000	6	300
140111-000	8	300

Tech Sheet 60028



Venturi Nozzle for 8mm Pipe

1307	
144116	

Tech Sheet 60037

Air Boy® Non Scratch



8mm, Bent Nozzle

1307	
140021-000	

Air Boy® Junior



Blow Gun Junior & Rubber Nozzle

1307	
140023-000	

Jet Air Boy®



High blowing force, low noise level

1/4" BSPP, Unblockable Jet Air, 1 Nozzle

1307	Nozzle	LPM
140026-134	Flat	580

Tech Sheet



Jet Air Boy® with Flat Nozzle & Volume Control

1307	
140027-134	



1/4" BSPP, Threaded Blow Gun for Jet Air Nozzles

1307	Nozzle	LPM
140858-000	1/4" BSPP	380

Tech Sheet 60024



1/4" BSPP, Jet Air, 1 Nozzle

1307	Colour	Material	LPM
141000-000	Black	POM	580

Tech Sheet 60036



1/4" BSPP, Jet Air, 2 Nozzles

1307	Colour	Material	LPM
141001-000	Grey	ULTEM 1000 200°C	580

Tech Sheet 20428

Precision Nozzle



Hardened Steel

1307	Thread ID
145950-000	1/4"

Wide Nozzle



Pack of 3

1307	To Suit
145955-000	Sodablaster V2

BLOW GUNS

Sodablasting



Sodablasting Media

1307	Litres
320103-000	5

Sodablasting Set

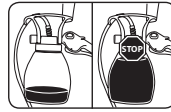


Air Blow Gun with Hose & Feeder Tube

1307	Thread ID
145110-000	1/4"

Brake Bleeders

- Air supply: 6-12 bar, 180 L/min at 8 bar



The safety valve prevents the fluid to atomize when the container is full.



1/4" BSPP Inlet, Complete with Safety Valve

1307	Capacity Litres
143103-000	1.2
Tech Sheet 20436	



1/4" BSPP Inlet

1307	Capacity Litres
143102-000	1.2

Oil Extractor

Ideal for changing oil on tractors, cars, boats, motorcycles, garden machinery and other types of engines.

Oil flow is infinitely adjustable and easily regulated with the trigger.

Also suitable for the removal of various types of oils, e.g. hydraulic, cutting and engine oils.

Made of impact-resistant materials and extremely corrosion resistant.

Maximum Working Pressure:
12 bar



1/4" BSPP

1307	Capacity Litres	LPM
147150-134	1.2	180
Tech Sheet 60401		

Automotive Tools

To ensure the optimum operation of your cooling system it is important to secure that the coolant is not polluted with abrasive particles and foreign materials.

With the **Jet Flusher** you can flush the whole system without use of solvents and harsh chemicals. It uses a combination of water and compressed air, which increases the water pressure without damaging the surface.

The **Jet Flusher** is equipped with adjustments for both air and water flow, which easily can be set for the required output.

- Optimum flushing of cooling systems - without solvent or harsh chemicals
- Individual adjustments for both air and water flow
- Combines water with compressed air for increased efficiency
- Multi-functional - possible to change the nozzle

Features:

- Effective flushing - without use of harsh chemicals
- Multi-functional - replaceable nozzle
- Individual regulations of both air and water flow
- Great mobility

Maximum Working Pressure:
6-10 bar 87-145 PSI,
min 200 L/min



Jet Flusher

1307	Water Connection	Air Connection
102185-000	1/2" Nipple Water Connection, 3/4" GHT Water Hose Thread	1/4" Internal Thread (BSP)

new product

The **Jet Washer** is a powerful washing gun which allows you to wash effectively without damaging the surface with high pressure.

The combination of compressed air and water gives ideal conditions for washing, where more power, than a regular water supply can provide, is needed.

The **Jet Washer** is designed to allow operators to come close without getting wet. There is no splash back.

- Effective cleaning without damage and splash back
- Multi-functional - possible to change the nozzle to the Jet Flusher nozzle
- Infinite adjustment of air and water flow
- Great mobility - built-in swivel
- Perfect for cleaning hard to reach places

Features:

- Effective cleaning
- No splash back
- Multi-functional - possible to change the nozzle
- Adjustable air and water flow
- Great mobility - built-in swivel
- Perfect for cleaning hard to reach places

Maximum Working Pressure:
6-10 bar 87-145 PSI,
min 200 L/min,



Jet Washer

1307	Water Connection	Air Connection
102010-000	1/2" Nipple water Connection, 3/4" GHT Water Hose Thread	1/4" Internal Thread (BSP)

new product

BLOW GUNS

Air Boy® Thrust Blow Gun

Air Boy® Thrust very high airflow The Air Boy® Thrust blowgun provides a very high airflow and the thrust nozzle is unblockable. The Thrust nozzle increases the airflow by 100% due to the venturi principle. The Air Boy® Thrust blowgun is well suited for commercial vehicles, trade and industry and cleaning areas.

Working Temperature: -20°C to +80°C Maximum Working Pressure: 12 bar, 600 L/min (8 bar)



Air Boy® Thrust Blow Gun only

1307	Connection
140001-000	1/4" BSP

Air Boy® Inflating Gun



Working Temperature: -10°C to +60°C

1/4" BSPP, for Footballs

1307	Nozzle	LPM
140108-000	Inflating Needle	200

Tech Sheet 20793



Working Temperature: -10°C to +60°C

1/4" BSPP, for Bicycles (Dunlop & Presta Valves)

1307	Nozzle OD mm	LPM
140118-000	8	380

Tech Sheet 20424

Blow Gun Accessories



Accessories

1307	Size mm	Type
144180	8	Protective Shield

Tech Sheet 20430

The Air Boy® Thrust blowgun provides a very high airflow and the thrust nozzle is unblockable

The Air Boy® Thrust blowgun comes with both a venturi nozzle (Thrust) and a 90° angle nozzle. The Thrust nozzle increases the airflow by 100% due to the venturi principle. The 90° angle nozzle is ideal for cleaning inside cylindrical objects or hard to reach places.

Working Temperature: -20°C to +80°C Maximum Working Pressure: 12 bar, 600 L/min (8 bar)



Air Boy® Thrust Blow Gun with 1 Metre & 90° Nozzle with 4 x 3 holes

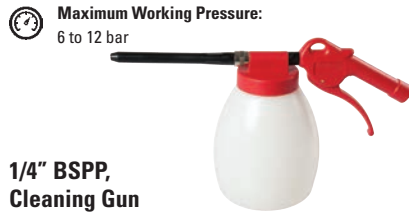
1307	Connection
140009-000	1/4" BSP

Cleaning Guns



Metal Nozzle

1307	Capacity Litres	Nozzle Length mm
142101-000	1.2	145

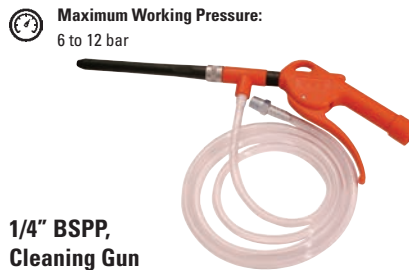


Maximum Working Pressure: 6 to 12 bar

1/4" BSPP, Cleaning Gun

1307	Capacity Litres	Nozzle Length mm	LPM
142130-000	1.2	150	100
142135-000	1.2	200	100

Tech Sheet 20431



Maximum Working Pressure: 6 to 12 bar

1/4" BSPP, Cleaning Gun with 1.5 Metre Suction Hose

1307	Nozzle Length mm	LPM
142131-000	150	100

Tech Sheet 20431

The Air Boy® Thrust blowgun comes with both a venturi nozzle (Thrust) and an angle nozzle. The Thrust nozzle increases the airflow by 100% due to the venturi principle. The angle nozzle is ideal for hard to reach places. The counter nut makes sure that the user themselves can choose the direction to blow.

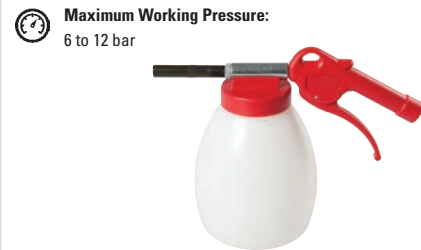
Working Temperature: -20°C to +80°C Maximum Working Pressure: 12 bar, 600 L/min (8 bar)



Air Boy® Thrust Blow Gun with 1 Metre & Directional Nozzle with 1 Hole

1307	Connection
140074-000	1/4" BSP

Sandblasting



Maximum Working Pressure: 6 to 12 bar

1/4" BSPP, Sandblasting Gun

1307	Capacity Litres	LPM
145100-000	1.2	450

Sandblasting Gun Accessories



Nozzle for Sandblasting Gun

1307	To Suit
145219	145102-000

BLOW GUNS

Blow Guns

Designed in Australia and sold for over 30 years, the Jamec Pem range is used globally in all automotive and industrial applications.

Features

- Variable air flow trigger
- Robust and durable ABS plastic handle
- Long reach with angle nozzle
- Ergonomic handle for maximum comfort
- Ideal for cleaning work areas and equipment



JAMEC PEM
COUPLE UP WITH THE RIGHT CONNECTION

230mm Angled Tipped Nozzle

1470	Description
171.0780S	230mm Angled Tipped Nozzle

Designed in Australia and sold for over 30 years, the Jamec Pem range is used globally in all automotive and industrial applications.

Features

- Strong rubber tipped nozzle, ideal for close delicate work
- Tough and durable ABS plastic
- Variable trigger airflow
- 1/4" Brass insert female connection
- Tough industrial quality



JAMEC PEM
COUPLE UP WITH THE RIGHT CONNECTION

100mm Rubber Tipped Angled Nozzle

1470	Description
171.034RTOS	100mm Rubber Tip Angled Nozzle

With a flexible 600 mm nozzle, the new Flex Nozzle blow gun from Jamec Pem provides the flexibility, innovation and convenience to make it the best hand tool in any workshop.

Features

- Durable ABS plastic handle
- Pistol grip
- 600mm flexible nozzle
- 1/4" brass inlet



JAMEC PEM
COUPLE UP WITH THE RIGHT CONNECTION

600mm Flex Nozzle

1470	Description
171.0670S	600mm Flex Nozzle

Energy Save Blow Gun Kit

Ready for use, simple and ergonomic, the Parker Legris blow gun kit remains an essential item of equipment for any blowing or spraying operation in the industrial environment.



Kit

1012	Thread	ID mm	OD mm	Length Metres
LE-0631 00 23	1/4"	4	6	4

Universal Blow Gun

- Fluid Carried:** Compressed air.
- Maximum Flow Pressure:** 10 bar.
- Safety Pressure at 6 bar:** 0.5 bar.
- Output at 6 bar:** 255 NI/min.
- Force of Air Jet at 6 bar:** 0,145 daN.
- Noise Level (Norm. NFS 31 031):** 83,3 dbA.



Dynamic Safety Blow Gun

1012	Thread
LE-0654 00 13	G1/4"

Tech Sheet 20792

DRIVEN BY AIR.



ERGO & ERGO EXTREME Blowgun Ranges

Design-engineered in the UK, with
comfort and style in mind.

1603

HYDRAQUIP
HOSE & HYDRAULICS

www.hydraquip.co.uk

BLOW GUNS

ERGO Blow Guns

Design-engineered in the UK, with comfort and style in mind, this range has the PCL DNA running right through it, from handle to tip. A sturdy product made from durable plastic that looks and feels good in your hand, it replaces the current 'best' range of blowguns, building on the high quality and performance for which PCL is renowned.

Features

- Newly designed air release valve built into the body, enabling trigger/air flow to be feathered
- Re-enforced webbing – Robust design gives strength and confidence
- Easy to store with multiple hanging points
- 1/4" BSPP female brass inlet for increased durability



Blow Gun with Standard Nozzle

7002	Airflow	Sound	Conformity
BG7001	11.8 cfm/334 L/min	94 dBA	N/A



Extended Conical Nozzle allows the operator to reach small areas.

Blow Gun with Extended Nozzle

7002	Airflow	Sound	Conformity
BG7002	11.8 cfm/334 L/min	94 dBA	N/A

Designed to reduce the risk associated with noise exposure.



Low Noise Blow Gun

7002	Airflow	Sound	Conformity
BG7006	9.8 cfm/277 L/min	80 dBA	EU/2003/10/CE

Safety valve restricts airflow to the recommended 2 bar eliminating user error.



2 bar Regulated Safety Blow Gun with Standard Nozzle

7002	Airflow	Sound	Conformity
BG8001	8.9 cfm/252 L/min	90 dBA	EU/2003/10/CE

Ideal when increased airflow is required.



TURBO Blow Gun

7002	Airflow	Sound	Conformity
BG7008	18.4 cfm/521 L/min	114 dBA	OSHA 1910.95 OSHASTD 1-13.1

Safety valve restricts airflow to the recommended 2 bar eliminating user error.



2 bar Regulated Safety Blow Gun with Extended Nozzle

7002	Airflow	Sound	Conformity
BG8002	8.9 cfm/252 L/min	90 dBA	EU/2003/10/CE

Ideal when a larger dispersal of air is required.



Aircurtain Blow Gun

7002	Airflow	Sound	Conformity
BG7005	8.8 cfm/249 L/min	94 dBA	OSHA 1910.95 OSHASTD 1-13.1

Ergo Extreme Blow Guns

Design-engineered in the UK, with comfort and style in mind.

Features

- Newly designed air release valve built into the body, enabling trigger/air flow to be feathered
- Re-enforced webbing – Robust design gives strength and confidence
- Easy to store with multiple hanging points
- 1/4" BSPP female brass inlet for increased durability
- Additional cushioning with a flexible, rubber grip on the handle, which also offers increased strength



Blow Gun with Standard Nozzle

7002	Airflow	Sound	Conformity
BG7501	11.8 cfm/334 L/min	94 dBA	N/A



Extended conical nozzle allows the operator to reach small areas.

Blow Gun with Extended Nozzle

7002	Airflow	Sound	Conformity
BG7502	11.8 cfm/334 L/min	94 dBA	N/A

Designed to reduce the risk associated with noise exposure.



Low Noise Blow Gun

7002	Airflow	Sound	Conformity
BG7506	9.8 cfm/521 L/min	80 dBA	EU/2003/10/CE

Safety valve restricts airflow to the recommended 2 bar eliminating user error.



2 bar Regulated Safety Blow Gun with Standard Nozzle

7002	Airflow	Sound	Conformity
BG8501	8.9 cfm/252 L/min	90 dBA	EU/2003/10/CE

Ideal when increased airflow is required.



TURBO Blow Gun

7002	Airflow	Sound	Conformity
BG7508	18.4 cfm/521 L/min	114 dBA	OSHA 1910.95 OSHASTD 1-13.1

Safety valve restricts airflow to the recommended 2 bar, eliminating user error.



2 bar Regulated Safety Blow Gun with Extended Nozzle

7002	Airflow	Sound	Conformity
BG8502	8.9 cfm/252 L/min	90 dBA	EU/2003/10/CE

Ideal when a larger dispersal of air is required.



Aircurtain Blow Gun

7002	Airflow	Sound	Conformity
BG7505	8.8 cfm/249 L/min	94 dBA	OSHA 1910.95 OSHASTD 1-13.1

BLOW GUNS



Metal Blow Gun with Safety Nozzle

This robust blowgun with 1/4" BSPP air inlet is manufactured from high quality die-cast alloy for a long, trouble-free life.



7002	Description
BG106	1/4" BSPP Inlet

Palm Blow Gun

The robust palm blowgun with 1/4" BSPP air inlet is manufactured from high quality die-cast alloy and is supplied with a safety nozzle and conical nozzle.

Features

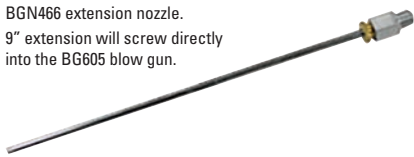
- 1/4" Female connection
- Max W.P: 10 bar
- Airflow: 247 L/min (8.9 cfm)



7002	Description
BG605	Blow Gun with Safety & Conical Nozzle

Palm Blow Gun 9" Extension Nozzle

BGN466 extension nozzle. 9" extension will screw directly into the BG605 blow gun.



7002	Description
BGN466	9" Extension to Suit BG605

Pistol Grip Blow Gun with Safety Nozzle

PCL's 1/4" BSPP pistol grip blowgun is manufactured from high quality die-cast alloy, giving the tool a long trouble-free life. Supplied with a conical and safety nozzle.



7002	Description
BG405	1/4" BSPP Inlet

Plastic Blow Gun

Manufactured from chemical and impact resistant acetal resin, PCL's range of entry level 1/4" BSPP pistol grip plastic blowguns are suitable for use with both air and water.



7002	Description
BG5002	Blow Gun with Standard 100mm Nozzle
BG5007	Blow Gun with 9" Extension Nozzle

Plastic Blow Gun with Safety Nozzle

PCL's entry level 1/4" BSPP pistol grip plastic blowgun is suitable for use with both air and water. It features an innovative safety nozzle design which ensures the airflow cannot be blocked.



7002	Description
BG5004	1/4" BSPP Blow Gun

Water Dispenser

Designed to dispense water in such applications as a radiator or windscreen water bottle filler. The sturdy design incorporates a lever for instant flow and cut-off.



7002	Description
RF104	Water Dispenser



For Hand Protection see pages 1756-1758



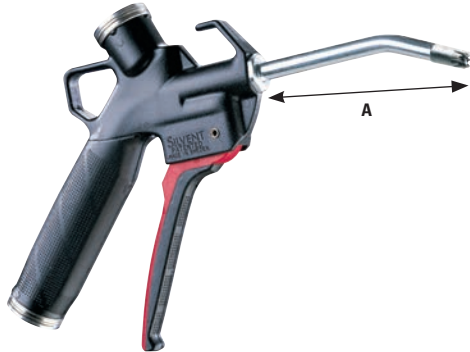
BLOW GUNS & AIR NOZZLES



Fully meets the EU Machine Directive's noise limitation requirements and OSHA's safety regulations.
A = nozzle length.

Silvent Safety Air Guns

Fitted with a Laval nozzle, this gun provides superior cleaning performance and optimal utilization of the compressed air.

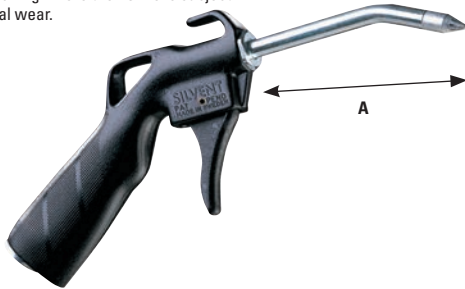


1/4" BSPP 007-L Series Air Gun, Stainless Steel Laval Nozzle

0165	A mm
SIL-007-L	94
SIL-007-L-250	250
SIL-007-L-400	400
SIL-007-L-600	600
SIL-007-L-800	800
SIL-007-L-1000	1000

Tech Sheet 10747

This gun is fitted with a zinc slotted nozzle and is suitable for general purpose cleaning where the nozzle is subject to little or no mechanical wear.



1/4" BSPP 500 Series Air Gun, Zinc Slotted Nozzle

0165	A mm
SIL-500-Z	94
SIL-500-Z-250	250
SIL-500-Z-400	400
SIL-500-Z-600	600
SIL-500-Z-800	800

Tech Sheet 10749

The zinc slotted nozzle allows powerful, quiet and efficient cleaning. Suitable for general purpose use.



1/4" BSPP 007-Z Series Air Gun, Zinc Slotted Nozzle

0165	A mm
SIL-007-Z	100
SIL-007-Z-250	250
SIL-007-Z-400	400
SIL-007-Z-600	600
SIL-007-Z-800	800
SIL-007-Z-1000	1000

Tech Sheet 20785

Pro One's specially designed nozzle makes it possible to combine effective blowing power and a low noise level. Pro One's unique design reduces the turbulence that is generated when blowing with compressed air. This means the noise level can often be reduced by over 10 dB (A) when blowing.

Blowing Force: 2.8 N (9.9 oz).

Sound Level: 78 dB (A).

Air Consumption: 14Nm³/h (8.2 scfm).



1/4" BSPP Pro One Model, Stainless Steel Blow Guns

0165	A mm
SIL-PRO-ONE	30

Tech Sheet 67994

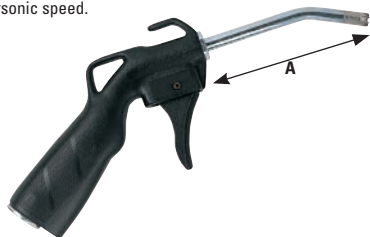
BLOW GUNS & AIR NOZZLES



Fully meets the EU Machine Directive's noise limitation requirements and OSHA's safety regulations.
A = nozzle length.

Silvent Safety Air Guns

Fitted with a stainless steel Laval nozzle, this gun creates a highly concentrated air stream that moves at supersonic speed.



1/4" BSPP 500-L Series Air Gun, Stainless Steel Laval Nozzle

0165	A mm
SIL-500-L	94
SIL-500-L-250	250
SIL-500-L-800	800
SIL-500-L-1000	1000
Tech Sheet 10748	

Fitted with a new generation of zinc Laval nozzle, this gun has a mix of divergent slots and holes surrounding the central Laval orifice, providing quiet, powerful and laminar air flow. This safety air gun is especially suitable for sweeping large areas or general purpose cleaning of parts and machines. The fin design of the nozzle prevents direct contact with skin.

Sound Level:
78 dB (A).
Maximum Pressure:
0.7 MPa.



1/4" BSPP 501-L Series Air Gun, Zinc Hole Nozzle

0165	A mm
SIL-501-L	30
Tech Sheet 67992	

An air gun with a flat nozzle for applications where the air system needs to strike a wider surface, providing quick and efficient blow-off



1/4" BSPP 5920 Series Air Gun, Zinc Flat Nozzle

0165	A mm
SIL-5920	92
Tech Sheet 10764	

An air gun fitted with an aerodynamic aluminium nozzle that offers a blowing force equivalent to five conventional air guns.



3/8" BSPP 2000 Series Aluminium Air Gun, Slotted Nozzle

0165	A mm
SIL-2055-A	49
SIL-2055-A-500	513
SIL-2055-A-1000	1013
Tech Sheet 20786	

Silvent Air Nozzles

Fitted with a stainless steel Laval nozzle. A core stream travelling at supersonic speed, surrounded by a protective sheath of air moving parallel to the central jet, makes optimal use of your compressed air. Around the Laval orifice there are divergent slots that generate a quiet, powerful and laminar air stream. The blowing force is approximately five times that of an ordinary air gun. Despite the high blowing force, both the noise level and air consumption are low.

Frequently used in the glass industry, paper mills, foundries, steel mills, etc.

Sound Level: 92.6 dB (A).
Maximum Pressure:
0.7 MPa.



1/2" BSPP 750 Series Heavy-duty, Air Gun & Nozzle, All Stainless Steel

0165	
SIL-755-L	Tech Sheet 67995

The 511 and 512 slot nozzles generate a directed air jet. The nozzles are well suited to all-purpose blowing, and blowing in confined spaces



Slot Nozzles, BSPP & Metric

0165	Thread	Length mm
SIL-511	1/8"	55.8
SIL-512	1/8"	30.3
SIL-5001	M7 x 0.75 Female	18.3
SIL-5003	M7 x 0.75 Male	23.3
Tech Sheet 10751		

An aluminium nozzle designed with aerodynamic slots, producing a strong, quiet and effective air stream.



3/8" BSPP High Blast Aluminium Nozzle

0165	Length mm
SIL-2005	46
Tech Sheet 10760	



For Eye Protection
see page 1754



Wonder Gun

Wonder Gun is a robust, made of aluminium tool that helps to maintain cleanliness in workplace. It can be used as traditional blow gun as well as vacuum gun sucking contaminants to the bag (sold separately).



BSPP Inlet

0025	Thread
WG-9	1/4"

Tech Sheet 10766

Wonder Gun Kit

High powered blow or vacuum gun.

Kit consists of:

- 1 x wonder gun
- 1 x dust collection bag
- 1 x round extension nozzle
- 1 x flat nozzle
- 1 x brush nozzle
- 1 x miniature nozzle
- 1 x 1 metre suction hose



BSPP Inlet

0025	Thread
WG-900KIT	1/4"

Tech Sheet 10767

Spare Parts for Wonder Gun Kit



0025	Type
WGS-01	Air Hose
WGS-02	Bag
WGS-03	Round Nozzle
WGS-04	Flat Nozzle
WGS-05	Brush Nozzle
WGS-06	Tiny Nozzle
HC25-40	Hose Clip

Vacuum Guns

Deep hole air cleaning gun.

The BV22D/H has been designed with EYE SAFETY in mind. The BV22D/H is designed to blow the chip up and vacuum it away simultaneously.



Deep Hole Cleaning Gun, BSPP

0025	Thread
BV22D/H	1/4"

Tech Sheet 10782

Simple, safe and incredibly efficient

Air Pumps are used in industry to remove waste material from around working machinery by vacuum recovery, or by high powered air blasting. Using a unique spiral exhaust air flow principle, the AP22 gives greater vertical and horizontal conveying distances.

Being air-powered means no electrical breakdowns or maintenance costs and makes wet vacuuming completely safe.



Nylon Air Pump, 6mm Push-in

0025	Thread
AP22	1/4"

Tech Sheet 10780

Accessories for Vacuum Guns



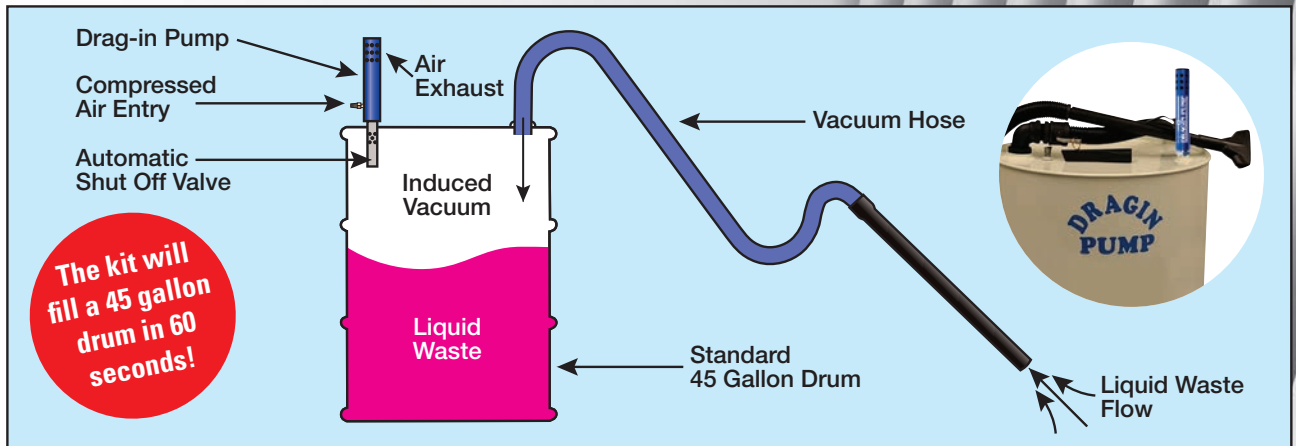
0025	Type
BV22-2	Vacuum Head
BV22-4	Long Reach Wand
BV22-5	Crevice Tool
BV22-6	Round Brush

Drag-in pump kit



The drag-in pump kit will remove liquids from lathes, milling machines, sumps, etc, including metal chips, in seconds.

Simply attach the kit to a standard, seated 45 gallon drum and connect to an air supply.



- Easy set-up and operation
- Heavy-duty construction
- No moving parts
- Auto shut off

Drag-in Pump Kit

0025
DPK-1

Pressure	Kg/cm ²	4	5	6	7	8
	psi	56.89	71.11	85.33	99.56	113.78
Air Consumption	M ³ /min	0.26	0.32	0.37	0.5	0.6
	cfm	9.18	11.29	13.06	17.65	21.18
Total Discharge	mm Hg	1.90	2.00	2.30	3.5	3.8
	cfm	67.08	70.62	81.21	123.85	134.17
Vacuum	mm Hg	220	272	314	335	375
	in Hg	8.66	10.70	12.36	13.2	14.8
Water	Litres per second	1.42	1.66	2.00	2.5	3.4
Oil SAE30	Litres per second	1	1.3	1.6	2	2.5



Air Jets

- Drying/removing liquid films from surfaces
- Controlling the coating of surfaces
- Blowing off/removing dust and debris
- Cooling or heating of materials
- Separating different weights or sizes



BSPP

0424	Thread	Material
PFFN-1/4	1/4"	Plastic
AFFN-1/4	1/4"	Aluminium

AIR JETS



Air jets utilise the Coanda effect (wall attachment of a high velocity fluid) to produce air motion in their surroundings. A small amount of compressed air is forced through an internal ring nozzle above sonic velocity. A vacuum is produced, pulling large volumes of surrounding or free air through the jet.

Multi-channel Flat Fan Nozzle

Powerful air jet, acting upon areas. Low noise level, low air consumption.

Applications: blowing off and blowing out, cleaning, drying, cooling, conveying with air.



BSPP

0025	Thread	Material
60013056AC	1/4"	Plastic/Pom
60028342AC	1/4"	Aluminium

Tech Sheet 20087

Multi-channel Round Jet Nozzle

The multi-channel round jet nozzles of the 600.326 series generate a powerful, circular air jet. The noise level and air consumption remain low even at higher air pressures. The special geometry at the nozzle outlet prevents air penetration into human skin. These nozzles comply with the OSHA standards.

Applications: targeted blowing out and blowing off with compressed air guns.

Reduction of noise level up to 12db(a).



Plastic/Pom

BSPP

0025	Thread	Material
60032656AC	1/4"	Plastic/Pom
6003263WAC	1/4"	Zinc

Tech Sheet 20087

Mini Round Jet Nozzle

Applications: especially for blowing out pocket holes.



BSPP

0025	Thread	Material
60038830AA	1/8"	Brass/Pom

Tech Sheet 20087

BLOW GUNS & AIR NOZZLES



Silvent Air Nozzles

These popular nozzles are installed in thousands of different applications. The protective flanges prevent direct contact between skin and exhaust ports.



1/4" BSPP Hole Nozzles

0165	Nozzle
SIL-208	Female Zinc
SIL-209	Male Zinc
SIL-210	Female Aluminium
SIL-211	Male Aluminium
SIL-215	Female Nickel
SIL-216	Male Nickel
SIL-218	Male Rilsan
Tech Sheet 10752	

Its aerodynamic slots achieve optimal utilization of the compressed air while keeping the noise level to a minimum.

stainless steel



1/2" BSPP, 700 Series Stainless Steel Nozzle

0165	Length mm
SIL-705	29
Tech Sheet 10762	

These flat nozzles are designed to generate a broad and efficient fan of air. They are outstanding for use wherever a wide but thin striking surface is required.



900 Series Flat Nozzle, BSPP

0165	Thread	Material	Nozzle
SIL-921	1/8"	Zinc	Flat Male
SIL-920B	1/8"	Zinc	Flat Female
SIL-920A	1/4"	Zinc	Flat Male
SIL-9002W	1/4"	Zytel	Flat Male
Tech Sheet 10763			

Available with or without flow regulation. Built-in flow regulation allows optimal utilization of compressed air. Adjusting the blowing force minimizes both energy consumption and noise level.

stainless steel



900 Series Flat Nozzle, Stainless Steel, BSPP

0165	Thread	Nozzle
SIL-973	1/4"	Flat Male
SIL-973F	1/4"	Flat Male with Regulation
Tech Sheet 10768		

A small angled flat nozzle that generates a broad but thin air cone. The small mounting dimensions are especially suitable for machine designs where space is limited.



1/8" Angled Flat Nozzle

0165	
SIL-961	
Tech Sheet 10753	

Allows quick and easy adjustment to the blowing angle. Maintains the desired position, even at high pressures. Available in six standard lengths.

Sound Level: 78 dB(A).

Maximum Pressure: 1 MPa.



3/8" BSPP, Magnetic Base with Single Flexbow Hose

0165	Length mm
SIL-221-L	200
SIL-231-L	300
SIL-241-L	490
SIL-251-L	590
Tech Sheet 67993	

Silvent Air Knives

Aluminium manifolds are used to build the air knives. The length of the manifold and the number of nozzles can be tailored to each customer's specific needs



3/8" BSPP Flat Nozzle Air Knives

0165	Nozzle
SIL-392	2
SIL-394	4
SIL-396	6
Tech Sheet 10765	



Angled Nozzle Air Knives

0165	Nozzle
SIL-362	2
SIL-364	4
SIL-366	6
Tech Sheet 10756	

Blow Gun Pressure Reducers



0165	Thread In/Out	Outlet Pressure
DRV13/30	1/4"	3
PRO4/04	1/4"	4
DRV13/50	1/4"	5
DRV13/60	1/4"	6

Nozzle Ball Joints



0165	Material	Thread BSPP
092.024.30.AC	Brass	1/4" MF

Test Equipment

Simply insert the end of the blow gun into the rubber tip and operate the gun to give test reading.



OSHA Gauge

0165	
SIL-OSH	
Tech Sheet 10757	

AIR MOVERS

Brauer airmovers have many uses such as: drying wet surfaces, blowing off and cleaning mechanical parts, cooling moulds, fume extraction and venting tanks.

Material: zinc alloy.
Standard Gap: 0.05mm (0.15mm for AM125).
DBA Quoted at: 5.5 bar.

Air Movers

Note: BR-AM35 shims not required.
BR-AM75 spare shims available.



Standard Fixed Gap Air Movers, BSPP

0119	Thread	DBA
BR-AM10	1/8"	72
BR-AM20	1/4"	79
BR-AM35	3/8"	80
BR-AM40	3/8"	80
BR-AM75	1/2"	80

Tech Sheet 2046

Strip air movers produce a curtain of air along the length of the application. The strip air mover uses the same Coanda effect utilised in our other air amplifiers.

No moving parts – compressed air from a local production line source can be utilised. Output volumes almost twenty times higher.

Highly efficient – significant compressed air savings can be achieved with short investment paybacks. Low noise levels. Stainless steel options.

Manufactured in any length from a combination of our standard sizes.

Material: aluminium/zinc-plated steel.

Standard Gap: 0.05-0.10mm.

DBA at 5.5 bar: 80

Shims: not required.

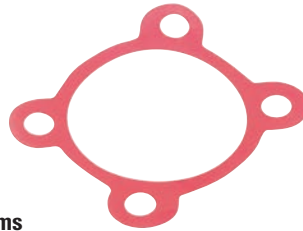
Standard Inlet Thread: 1/4" BSPP.



Strip Air Movers, BSPP

0119	Length mm	Thread
BR-SE150	150	1/4"
BR-SE300	300	1/4"
BR-SE450	450	1/4"
BR-SE600	600	1/4"

Tech Sheet 10790



Spare Shims

0119	To Suit	Size mm
BR-SH10/1.5	BR-AM10	1.5
BR-SH10/2	BR-AM10	2
BR-SH10/3	BR-AM10	3
BR-SH20/1.5	BR-AM20	1.5
BR-SH20/2	BR-AM20	2
BR-SH40/1.5	BR-AM40	1.5
BR-SH40/2	BR-AM40	2
BR-SH40/3	BR-AM40	3



Universal Connector Joints

0119	Thread
BR-AM40UJ	3/8"

Tech Sheet 10793



Magnetic Base

0119	Thread
BR-MAGNETICBASEM	1/4"

Adjustable Air Movers

Note: shims not applicable.



Aluminium Alloy, BSPP

0119	Thread	DBA
BR-AM10A	1/8"	73
BR-AM20A	1/4"	79
BR-AM35A	3/8"	80
BR-AM60A	3/8"	80
BR-AM75A	1/2"	80

Tech Sheet 20370

stainless steel



Stainless Steel, BSPP

0119	Thread	DBA
BR-SS60A	3/8"	80
BR-SS75A	1/2"	81

Tech Sheet 20371

Blow Guns



Trigger Action, BSPP

0119	Thread
BR-AG32LC	1/4"

Tech Sheet 20374

AIR KNIVES & AMPLIFIERS

Neublade Airstrip

The Neublade from Beckair utilises innovative technology developed to give the highest performance, lowest noise and lowest air consumption compared to any other product.

The powerful, whisper-quiet blade of air is ideal for drying, cleaning, cooling or containing in all kinds of process, food and manufacturing applications.

The key to its performance is our flow straightening technology (patent applied for) which provides an exceptionally laminar sheet of air. The low levels of turbulence also mean extremely low noise (65dB).

- No moving parts – the Neublade is maintenance free
- Ultra low air consumption – significantly lower running costs than standard nozzles and strips
- Ultra-quiet operation (typically 65 dB) for an improved working environment
- Easily mounted onto existing installations
- Choice of air entry for maximum flexibility

The Neublade is manufactured from extruded, anodised aluminium and comes complete with quick fit hose connector. Because of the method of construction, we are able to offer the Neublade in any length up to 2m long. Please call our sales team for further information.

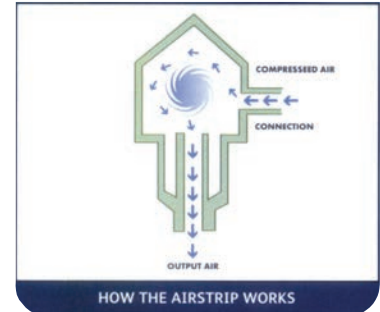
Applications

- Drying: printing, paints, coatings, components, conveyor belts
- Cleaning: components, conveyors, instruments lens, dust removal, waste removal
- Cooling: components
- Air curtain: fume containment, heat containment from ovens and furnaces

How Neublade can reduce your operating costs

Type of Airstrip	Type of Airstrip		Noise Level Db(A) at 1M	Power Required kW SLPm	Running Costs per Year*
	SLPM	SCFM			
5 holes in 50mm length of pipe (3mm or 1/8")	1980	70	95	10.0	£960
Standard air wipe (50mm)	450	16	85	2.3	£220
Neublade (50mm)	124	4.5	65	0.65	£62

*Based on 40 hours per week, 48 weeks per year with an energy cost of around £0.05 per kWh.



BSP Ports

9039	Length		Inlet	Air Consumption @ 4 bar		Noise Db (A) at 1M
	mm	Inches		SLPM	SCFM	
BNEUBLADE/80	80	3"	1/4" BSP + Push-in Fitting	198	7	65
BNEUBLADE/150	150	6"	1/4" BSP + Push-in Fitting	368	13	65
BNEUBLADE/300	300	12"	1/4" BSP + Push-in Fitting	736	26	65
BNEUBLADE/450	450	18"	1/4" BSP + Push-in Fitting	1104	39	65
BNEUBLADE/600	600	24"	1/4" BSP + Push-in Fitting	1471	52	65
BNEUBLADE/750	750	30"	1/4" BSP + Push-in Fitting	1839	65	65
BNEUBLADE/900	900	36"	1/4" BSP + Push-in Fitting	2207	78	65



Ringjet Air Amplifier

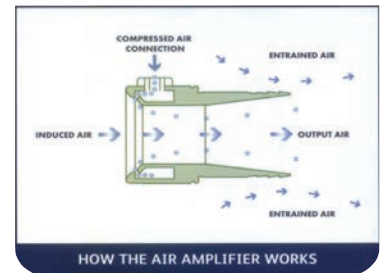
Ringjets air amplifiers are bladeless, motorless fans which can be used for cooling, extracting, drying and ventilating in process, food and manufacturing industries.

Using a small volume of compressed air as the power source, Ringjets utilise the 'Coanda' effect to draw larger volumes of ambient air into the device to amplify the air flow by up to 25 times

- No moving parts – Ringjet is maintenance free
- No electricity required – safe to use in wet locations
- Adjustable flow control using air gap and inlet pressure
- Energy efficient – low running cost
- Low cost
- Quiet operation (less than 80 dB (A))
- Also available in stainless steel

Applications

- Cooling: components, mouldings, extrusions, people, components on test
- Extraction: fumes, water, dust, waste material
- Drying: components, printing, material



BSP Ports

9039	Throat Diameter mm	Air Inlet BSP	Air Consumption @ 4 bar		Outlet Airflow		Hose Size for Ducting		OD mm	Length mm	Material
			SLPM	SCFM	SLPM	SCFM	mm	Inches			
BRJ12A	12	G1/8"	170	6	5,666	200	19	3/4"	25	63	Anodised Alloy
BRJ20A	20	G1/8"	283	10	6,800	240	32	1.1/4"	40	63	Anodised Alloy
BRJ25A	25	G1/4"	397	14	11,333	400	38	1.1/2"	50	90	Anodised Alloy
BRJ40A	40	G1/4"	510	18	14,150	500	50	2"	63	95	Anodised Alloy
BRJ50A	50	G3/8"	962	34	20,666	730	76	3"	90	135	Anodised Alloy
BRJ75A	75	G1/2"	1416	50	33,333	1,178	100	4"	132	165	Anodised Alloy
BRJ12S/S	12	G1/8"	170	6	5,666	200	19	3/4"	25	63	Stainless Steel (316)
BRJ20S/S	20	G1/8"	283	10	6,800	240	32	1.1/4"	40	63	Stainless Steel (316)
BRJ25S/S	25	G1/4"	397	14	11,333	400	38	1.1/2"	50	90	Stainless Steel (316)
BRJ40S/S	40	G1/4"	510	18	14,150	500	50	2"	63	95	Stainless Steel (316)
BRJ50S/S	50	G3/8"	962	34	20,666	730	76	3"	90	135	Stainless Steel (316)



Ringjet Air Conveyors

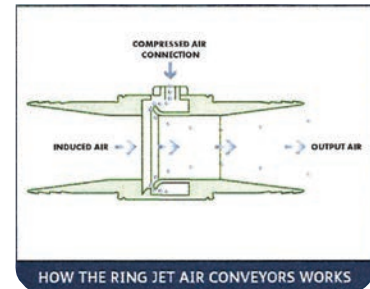
Ringjets air conveyors are bladeless, motorless fans which connect to flexible hose and are ideal for conveying and extracting all kinds of materials in process, food and manufacturing industries. Using a small volume of compressed air as the power source, Ringjets utilise the 'Coanda' effect to draw larger volumes of ambient air into the device to amplify the air by up to 25 times. Ringjet conveyors are capable of moving material over long distances and this can be increased by adding additional conveyors into the line.



- No moving parts – Ringjet is maintenance free
- No electricity required – safe to use with liquids and wet material
- Adjustable flow control using air gap and inlet pressure
- Energy efficient – low running cost
- Ideal for conveying over long distances
- Quiet operation (less than 80 dB (A))

Applications

- Conveying: plastic pellets, waste removal, food products, pills and tablets, small components, dust, liquids, paper trim
- Extraction: fumes, liquids, dust, waste material



BSP Ports

9039	Throat Diameter mm	Air Inlet BSP	Air Consumption @ 5 bar		Outlet Airflow		Hose Size for Ducting		OD mm	Length mm	Material
			SLPM	SCFM	SLPM	SCFM	mm	Inches			
BRJ12C	12	G1/8"	170	6	5,666	200	19	3/4"	25	95	Anodised Alloy
BRJ20C	20	G1/8"	283	10	6,800	240	32	1.1/4"	40	95	Anodised Alloy
BRJ25C	25	G1/4"	397	14	11,333	400	38	1.1/2"	50	135	Anodised Alloy
BRJ40C	40	G1/4"	510	18	14,150	500	50	2"	63	135	Anodised Alloy
BRJ50C	50	G3/8"	962	34	20,666	730	76	3"	90	203	Anodised Alloy

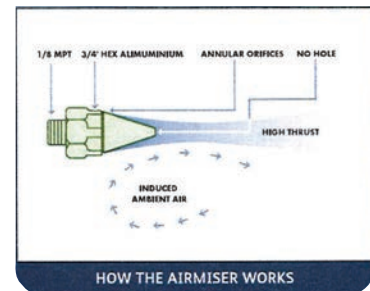
Airmiser Nozzles

The Airmiser uses a series of annular nozzles instead of a single hole to create a safer, more efficient, lower noise alternative to open tubes and pipes. A small volume of compressed air is amplified up to 25 times by utilising the 'Coanda' effect to induce a higher flow of ambient air into the air stream.

Because of the risk of serious injury from compressed air entering the bloodstream from single open pipes at high pressure, the multi-nozzle arrangement of the Airmiser is designed to be much safer alternative.

Replacing open jets with Airmisers will give significantly reduced air consumption and lower noise levels and, in most cases, it is a simple operation to install Airmiser nozzles. Airmisers are suitable for use individually or in multiple arrays to create a much greater effect.

- No moving parts – Airmiser is maintenance free
- Low air consumption – significantly lower running costs than open holes and pipes
- Quieter operation (below 80 DB (A) at 1m) for an improved working environment
- Easily mounted onto existing installations



BSP Ports

9039	Air Inlet BSP	Air Consumption @ 5 bar		Thrust		Noise Level Db (A) at 1M
		SLPM	SCFM	N	LBF	
BAMSA	G1/8"	225	8	1.8	0.4	65
BAMBH	G1/4"	566	20	5.2	1.2	74
BAMSASS	G1/8"	225	8	1.8	0.4	65
BAMBHSS	G1/4"	566	20	5.2	1.2	74



AIR KNIVES & AMPLIFIERS

Pneu-Power Air Conveyors

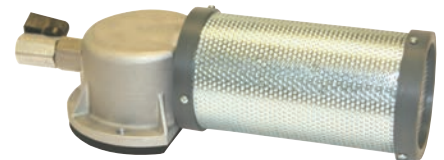
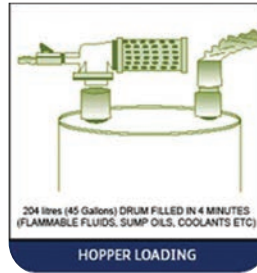
The Beckair Pneu-Power is a bladeless, motorless fan which connects to flexible hose and gives high vacuum or high flow for conveying and extracting all kinds of materials in process, food and manufacturing industries. Using a small volume of compressed air as the power source, the Pneu-Power utilises the 'Coanda' effect to draw larger volumes of ambient air into the device to amplify the air flow by up to 25 times

The Pneu-Power has very high performance and is capable of moving material over very long distances. The Pneu-Power is extremely robust, being manufactured from cast aluminium and is designed for use in harsh environments. For applications where extraction only is required, the silencer (supplied) diffuses the air and reduces the noise from the device.

- Type A offers higher flows, type B offers higher suction
- No moving parts – Pneu-Power is maintenance free
- No electricity required – safe to use with liquids and wet material
- Adjustable flow control using air valve and inlet pressure
- Energy efficient – low running cost
- Quiet operation (less than 80 dB (A))

Applications

- Conveying tank filling/emptying, hopper loading, powder, granules, swarf removal, dust, liquids
- Extraction fumes, liquids, dust, waste material



BSP Ports

9039	Air Inlet BSP	Air Consumption @ 6 bar		Outlet Airflow		Vacuum		
BNEUPOWERA	G1/4"	SLPM	SCFM	SLPM	SCFM	mm WG	Inch WG	Inch HG
		885	31	2250	80	2072	82"	6"

Clustajet Ventilators

Clustajet ventilators are a compressed air operated fan which utilise our Ringjet technology to create a robust, maintenance free, high performance ventilator. Because the Clustajet uses compressed air, no electrical supply is needed making it suitable for safe use in damp or wet locations. Multiple Ringjets are positioned inside a steel casing to create a space rocket jet effect which gives the unit its high performance. For a given airflow, Clustajets are lighter in weight and smaller than equivalent electric fans.

- ### Applications
- Extraction: welding fumes, solvent vapours, dust
 - Ventilating: confined spaces, tanks, sewers, tunnel
 - Cooling: components, pipework

- No moving parts – Clustajet is maintenance free
- No electricity required – safe to use in damp or wet locations
- Adjustable flow control using the control valve
- Standard Clustajets are manufactured from a strong welded steel casing
- Other options include:
 - Plastic
 - Flexible hose



BSP Ports

9039	Hose Size		Air Inlet BSP Inches	Airflow Consumption @ 4 bar		Outlet Air Flow		Dimensions					
	SLPM	SCFM		SLPM	SCFM	mm	Inches	mm	Inches	mm	Inches		
BCJ425	102	4"	G1/4"	395	14	12,700	450	102	4"	180	7"	230	9"
BCJ620	150	6"	G1/2"	1130	40	18,400	650	152	6"	254	10"	356	14"
BCJ825	203	8"	G1"	2265	80	34,800	1230	203	8"	305	12"	457	18"
BCJ1250	305	12"	G1"	5375	190	87,750	3100	305	12"	406	16"	508	20"