

1 Hydraulics **3-284**

2 Hydraulic Quick Release Couplings **285-320**

3 Pneumatic Quick Release Couplings **321-406**

4 Monitor & Test **407-446**

5 Pneumatic & Vacuum **447-762**

6 Push-in Fittings & Tubing **763-918**

7 Valves & Actuation **919-1060**

8 Ring Main **1061-1136**

9 Hose Tails, Adaptors, Fittings & Manifolds **1137-1224**

10 Stainless Steel **1225-1332**

11 Malleable Iron **1333-1398**

12 Hose, Couplings, Ducting & Hose Reels **1399-1510**

13 Clips & Clamps **1511-1558**

14 Paint, Sprays & Adhesives **1559-1590**

15 Blow Guns, Vacuum & Nozzles **1591-1616**

16 Fuelling, Lubrication, Wash Down & Misting **1617-1696**

17 Compressors & Air Tools **1697-1726**

18 Hand Tools & PPE **1727-1765**

SECTION 16

Fuelling, Lubrication, Wash Down & Misting

16.01	Fuelling Triggers, Nozzles & Meters	1617-1626
16.02	Fuelling Filtration	1627-1631
16.03	Transfer Pumps	1632-1638
16.04	Greasing & Lubrication Equipment	1639-1649
16.05	Oil Drain Plugs	1650-1653
16.06	Tank Level Gauges	1654
16.07	Workshop Fluid Transfer	1655-1656
16.08	Water Guns & Couplings	1657-1665
16.09	Pressure Wash Lances & Triggers	1666-1672
16.10	Pressure Wash Adaptors, Nozzles & Irrigation Equipment	1673-1680
16.11	Pressure Sprays & Vehicle Cleaning Equipment	1681-1683
16.12	Diaphragm Pumps	1684-1685
16.13	Misting Systems	1686-1696

SECTION 16

16.01 Fuelling Triggers, Nozzles & Meters



1617-1626

- Fuelling Equipment & Accessories
- Fuel Dispensing Hose & Gravity Hose Kits
- Fuelling Equipment & Accessories



16.02 Fuelling Filtration



1627-1631

- Fuelling Filtration
- Diesel Oil Filters



16.03 Transfer Pumps



1632-1638

- Barrel Pumps
- Rotary Pumps & Diaphragm
- Manual Transfer Pumps
- Dosing Pumps
- Electrical Transfer Pumps
- Air Operated Transfer Pump
- Manual & Compressed Air Transfer Pumps & Kits
- Fuelling Equipment & Accessories



16.04 Greasing & Lubrication Equipment



1639-1649

- Greasing & Lubrication Equipment
- Pressure Hoses



16.05 Oil Drain Plugs



1650-1653

- Quick Oil Drain Plugs



16.06 Tank Level Gauges



1654

- Tank Gauges



16.07 Workshop Fluid Transfer



1655-1656

- Workshop Fluid Transfer



Fuelling, Lubrication, Wash Down & Misting

16.08 Water Guns & Couplings

- Heavy-duty, Brass Water Guns
- Washdown & Cleaning Products
- Water Gun
- 1/2" System
- 3/4" System
- 1" System
- Click™ System
- Stainless Steel



1657-1665



16.09 Pressure Wash Lances & Triggers

- Wash Down Equipment



1666-1672



16.10 Pressure Wash Adaptors, Nozzles & Irrigation Equipment

- Wash Down Equipment
- Spray Guns & Accessories
- Sprinkler



1673-1680



16.11 Pressure Sprays & Vehicle Cleaning Equipment

- Pressure Spray Equipment
- Pressure Sprayers
- Commercial & Domestic Vehicle Cleaning Equipment



1681-1683

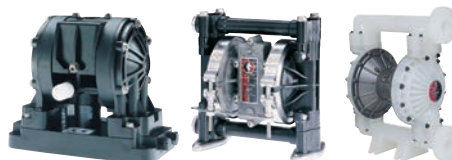


16.12 Diaphragm Pumps

- Pumps & Process Equipment



1684-1685



16.13 Misting Systems

- Misting Systems - Pump Kits
- Misting Systems - Air Injection Dry Fog System
- Misting Systems - Fans
- FO-500 Ultra-low Volume Fogger
- Misting Systems - Adaptors
- Misting Systems - Filters
- Misting Systems - Controllers



1686-1696



Ultra High Speed Auto Nozzle

- Only suitable with diesel or biodiesel up to B30.
- Automatically shuts-off the flow of fuel when vehicle tank is full
- Ideal for refuelling very large vehicles and heavy plant equipment
- Cast aluminium body
- 3 position stay open latch
- Complete with 1.1/2" BSPF swivel inlet

Maximum Flow: 250 L/min.

For use with electric pumps only

Maximum Working Pressure:
72 psi (5 bar)



BSPP

0225	Thread	LPM
NOZA.250S	1.1/2"	250

Trigger Nozzles

- Manual trigger nozzle for use with diesel, HVO and biodiesel up to B30. For use with gravity or electric pumps up to 80L/min. Not automatic shut off.

Body: Aluminium **Maximum Working Pressure:**
Seals: Nitrile 50psi (3.5bar)



BSPP

0225	Thread
2019-9295	1"

- Suitable with diesel, HVO and oils to SAE 90.
- Aluminium body enclosed in a plastic shell making it comfortable even when used at low temperatures.
- 1" BSPF swivel inlet.
- Can be used with gravity feed tanks or electric pumps.
- Integral hook for tidy storage when not in use.

Maximum Flow: 150 L/min.

Maximum Working Pressure:
142 psi (10 bar)



Manual

0225	LPM
NOZ.S3000	150

Nozzle Holder



0225	HANG.P
------	--------

Polypropylene Manual Nozzle

- Suitable with diesel, HVO and water.
- Polyethylene body. 3/4" hose tail.
- Can be used with gravity feed tanks or electric pumps.
- Integral hook for tidy storage when not in use.

NOZ.C

Nitrile seals, mild steel spring.

Max. Flow: 60 L/min.

Maximum Working Pressure:
29 psi (2 bar)



0225	Seal
NOZ.C	Nitrile

Automatic Trigger Nozzles

- Suitable with diesel, HVO or biodiesel up to B30.
- Automatically shuts-off the flow of fuel when vehicle tank is full.
- 3 position stay open latch. 20-80 L/min, max. pressure 50 psi (3.5 bar).

For use with electric pumps only.

Not suitable for vehicles with small filler necks.

Body: Aluminium

Maximum Working Pressure:
50 psi (3.5 bar)



BSPP

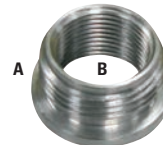
0225	Thread	LPM
2019-9311	3/4"	80
2019-9303	1"	80



Economy, BSPP

0225	Thread	LPM	Colour
NOZA.60S	1"	60	Red
NOZA.120S	1"	120	Blue

Universal Reducing Bush



0225	Thread A	Thread B
BSH.4.3A	1" Male	3/4" Female

Trigger Gun with Electronic In-line Flow Meter

- Manual trigger nozzle for use with diesel gasoline, B100 biodiesel and oils to SAE 90.

Flow Meter

Technical Data

Material: Aluminium

Seal Material:
Viton and fluorinated silicone rubber



1" BSPP Trigger Gun & Flow Meter

0225	Thread	Max Pressure Bar	LPM
CD-0G01	1"	20	10-60

Tech Sheet 60124

Professional Automatic Nozzle for Diesel

- Suitable with diesel, HVO and biodiesel up to B30.
- Automatically shuts-off the flow of fuel when vehicle tank is full.
- 3 position stay open latch, which may be disabled if required.
- 1" BSPF swivel inlet.

For use with electric pumps only.

Not approved for use on resale dispensers.

Max. Flow: Standard 10-80 L/min
High Speed 80-140 L/min

Maximum Working Pressure:
NOZA.X - 0.4-5 bar
NOZA.X25 - 0.4-3 bar



Standard version only

0225	Description	LPM
NOZA.X	Standard (ATEX)	80
NOZA.X25	Hi-speed	140

Stainless Steel Automatic Nozzle

- Suitable for use with diesel or Adblue®. Automatically shuts-off the flow of fuel when vehicle tank is full.
- 3 position stay open latch.
- 304 stainless steel body, viton seals.
- Flow rate up to 45 L/min.

For use with electric pumps only.

Inlet: 3/4" (20mm) Hose barb.

Maximum Flow: 60 L/min.

Maximum Working Pressure:
50 psi (3.5 bar)

Working Temperature:
-10°C to +50°C



0225	Seal
NOZA.SS	Viton

Tech Sheet 20033

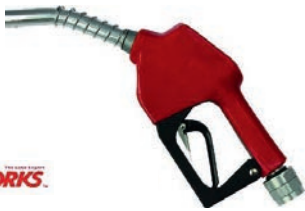
Automatic Trigger Nozzles



BSP

0122	Thread
ZFN34	3/4"

Auto Shut-off Nozzle Petrol & Diesel



LubeWORKS

0122	Thread
J1789022-1	3/4"

High Volume Auto Nozzle Petrol & Diesel



LubeWORKS

0122	Thread
J1789023-1	1"



LubeWORKS

0122	Thread
J18312002-1	3/4"

Oil Guns

- Semi-automatic Tip



Digital Oil Gun with Rigid & Flexible Hose, BSPP

0122	Thread
JDA-01	1/2"
Tech Sheet 2054	



new product

Digital Preset Oil Gun

0122
J18133512

- 5-Digit easy to read LCD display powered by 3V CR2 battery
- Low battery indicator
- Rubber protection shroud for meter

Working Pressure:
5 - 50 bar



Digital High Flow Oil Gun, BSP

0122	Inlet Female BSP
J18128003	3/4"
Tech Sheet 71695	

new product

- Semi-automatic Tip



Manual Oil Gun with Flexible Hose, BSPP

0122	Thread
JA-01	1/2"
Tech Sheet 2055	

- Manual Tip



Manual Oil Gun with Rigid Tube, BSPP

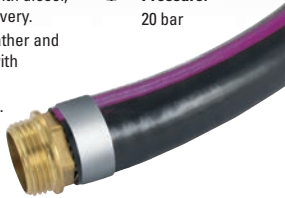
0122	Thread
JM-01	1/2"



Rubber Alloy Dispensing Hoses

Oil resistant rubber alloy, suitable for use with diesel, air and water delivery.
Cover: black, weather and ozone resistant with purple strip.
Safety Factor: 3-1.

Maximum Working Pressure:
20 bar



3/4" BSPP Male/Male x 3/4" ID Replacement Hose

0225	Length Metres
RTDH-34-3	3
RTDH-34-4	4
RTDH-34-5	5
RTDH-34-6	6

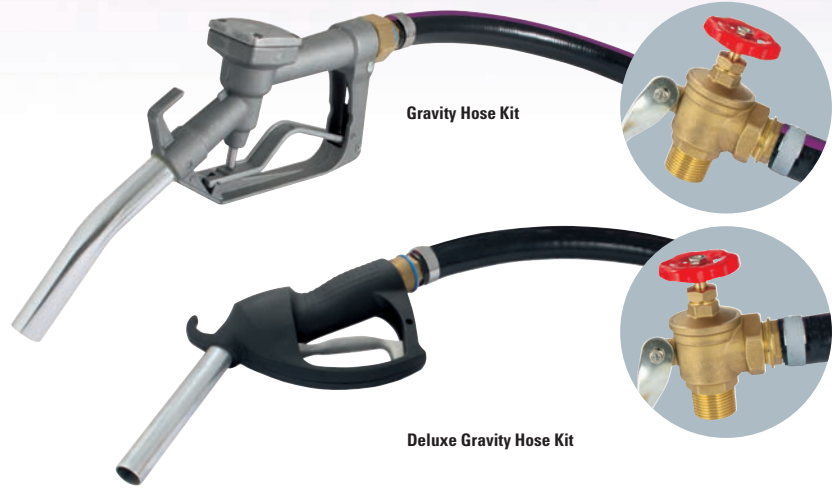
1" BSPP Male/Male x 1" ID Replacement Hose

0225	Length Metres
RTDH-1-3	3
RTDH-1-4	4
RTDH-1-5	5
RTDH-1-6	6
RTDH-1-8	8
RTDH-1-10	10
RTDH-1-12	12

1" BSPP Male/Male x 1" ID Super Flexible Deluxe Replacement Hose

0225	Length Metres
DRTDH-1-3	3
DRTDH-1-4	4
DRTDH-1-5	5
DRTDH-1-6	6
DRTDH-1-8	8
DRTDH-1-10	10
DRTDH-1-12	12

Gravity Hose Kits



Hose Info Maximum Working Pressure:
20 bar

Oil resistant rubber alloy, suitable for use with diesel, air and water delivery.
Cover: black, weather and ozone resistant with purple strip.
Safety Factor: 3-1

Nozzle Info. Maximum Working Pressure:
142 psi (10 bar)

Maximum Flow:
150 L/min
Manual trigger, suitable for use with diesel, biodiesel up to B100 and oils to SAE 90.

Working Temperature:
-20°C to +60°C

Maximum Working Pressure:
58 psi (4 bar)

Maximum Flow:
80 L/min
Manual trigger, suitable for use with diesel.

1" BSPP Male/Male x 1" ID Deluxe Gravity Hose Kits

0225	Length Metres
DASS-RTDH-1-3	3
DASS-RTDH-1-4	4
DASS-RTDH-1-5	5
DASS-RTDH-1-6	6
DASS-RTDH-1-8	8
DASS-RTDH-1-10	10
DASS-RTDH-1-12	12
DASS-RTDH-1-15	15

1" BSPP Male/Male x 1" ID Gravity Hose Kits

0225	Length Metres
ASS-RTDH-1-3	3
ASS-RTDH-1-4	4
ASS-RTDH-1-5	5
ASS-RTDH-1-6	6
ASS-RTDH-1-8	8
ASS-RTDH-1-10	10
ASS-RTDH-1-12	12
ASS-RTDH-1-15	15

FUELLING EQUIPMENT & ACCESSORIES

Brass Drum Tap



BSPP

0225	Thread
2019-9394	3/4"

Drum Taps - Polyethylene

- Polyethylene drum taps can be used with a wide range of oils, acids and caustics
- Huge 2" version can be used with thick liquids
- BSPP male threads with sealing washer



BSPP

0225	Thread	Description
DTJ	2"	Full Bore Drum Tap
DT3P	3/4"	Drum Tap

Drum Wrenches



Aluminium

0225
DW-ALUMINIUM



Adblu® is a water-based chemical solution that is required for some commercial vehicles to help reduce pollution and comply to the Euro 4/5 directive.

Adblu® consumption is 5% of diesel, so for every one hundred litres of diesel, 5 litres of Adblu® is used. **You must not** use a normal fuel pump to dispense Adblu®.

Adblu® Manual Nozzle

- Suitable for use with Adblu®
- Inlet 3/4" hose tail
- Spout diameter (OD) 18.8mm
- Wetted components: (Nylon 6, 30% glass filled), stainless steel, viton
- Can be used with gravity feed or electric pumps
- Integral hook for tidy storage when not in use

Maximum Flow: 80 L/min

Maximum Working Pressure
5 bar

Maximum Working Temperature:
+60°C



0225	LPM
NOZ-MAB	80
Tech Sheet 20032	

Lever Hand Pump & Accessories

- Suitable for use with Adblu® and other water-based fluids, antifreeze, windscreen washer fluid, herbicide, pesticides, insecticides and fertilizers.
- Wetted components polyacetal, polypropylene, polyethylene, viton
- Capable of up to 500ml per stroke
- 2" BSPM drum adaptor
- 2 piece suction pipe with one part telescopic (extends to 98cm)
- 2m x 3/4" outlet hose (flexible corrugated PVC hose)
- Temperature range: +5°C (23°F) to +45°C (115°F)
- Option (AD.HPG0) Trisure/Valorex container adaptor



0225
AB.HPPK
Tech Sheet 20031

Adblu® Hose

- Suitable with Adblu® and antifreeze made in the UK
- PVC, polyester braided
- For suction or delivery

Specification:
BS EN ISO 6224/2001,
BS EN ISO 5774/2008
• Bore 19mm

Maximum Working Pressure:
7 bar (102psi)



Made in the UK



3/4" Adblu® Delivery Hose (Hose only)

0225	Length Metres
ABH.4.3/4	4
ABH.6.3/4	6

FUELLING EQUIPMENT & ACCESSORIES



IBC Pump Kit

- Intermediate bulk container (IBC) side mounted, easy to use pump kit
- Suitable with Adblue®
- Capable of up to 25 L/min
- Manual Adblue® nozzle with stainless steel tip
- 1.5 metre flexible suction hose with CDS connector
- 4 metre outlet hose
- Designed for indoor use



MSS.AB



J10302504

0225	Nozzle
MSS.AB	Manual
J10302504	Auto

Tech Sheet 20030

Rechargeable Adblue® Pumps

- Pump complete with control nozzle, telescopic suction tube and 1.5m flexible hose.
- 2900mAh Rechargeable Lithium-ion battery. Rechargeable via USB 2.0 type B connector (USB cable included)
- Charge Time: 3hrs
- Flow Rate: Up to 11.5 LPM
- Duty Cycle: Maximum 15 mins on and 30 mins off
- Fully charged battery can discharge up to 300ltrs (Tested using water)
- Wetted components: polypropylene, polyethylene, PVC and acetal
- Recommended use: gasoline, diesel, kerosene, light Oils, AdBlue, DEF, water, antifreeze, windshield Fluid, mild detergents and agricultural chemicals.
- Do not use with: acids, acetone, Benzene, cresol, ethyl, phenol, methyl ethyl, thinners solvents, etc.



Rechargeable DEF/AdBlue Pump

0122
ZBOP60

Tech Sheet 71689

Lever Action Barrel Pump

Features:

- Supplied complete with suction tube for use with 50-205ltr drums and 1.2m 3/4" flexible discharge hose.
- Comes complete with ZDBC - drum bung converter Trisure/Valorex.
- Delivers approx. 500cc per stroke.
- Wetted components: polypropylene, polyethylene, acetal.
- For use with: Urea/DEF, water, lubricants, windshield washer fluid, antifreeze, mild detergents, agricultural chemicals.
- Do not use with: any media not compatible with materials used in the pump construction. These pumps must not be used for fuel transfer or with solvent thinners etc.



Lubework Lever Adblue Pump

0122
J17210241

Tech Sheet 71691

Swivel Hose Fittings

- Greatly eases handling and reduces hose wear and kinking.
- All have parallel threads except (SWIV.15A) which has a taper male and parallel female.

Maximum Working Pressure:
87 psi (6 bar)



0225	Female Thread	Male Thread
SWIV.3A	3/4"	3/4"
SWIV.13A	1"	3/4"
SWIV.31A	3/4"	1"
SWIV.1A	1"	1"
SWIV.15A	1.1/2"	1.1/2"

Jointing Compound

- General purpose jointing and thread sealing compound.
- Recommended for diesel, oil, water and steam.
- **NOT** suitable with ethanol.
- Fully waterproof and MOD approved.
- 250ml screw top tins with brush applicator.
- 500ml tins without brush applicator.



0225	Millilitres
HELD	250
HELD.500	500

Fuel Lockout Valve



BSPP

0225	Thread
FLV-1	1"

Continental Softwall Diesel Hoses

- Suitable with diesel, HVO or biodiesel up to B20.
- Ideal for use on economy fuel dispensers.
- Machine swaged ends for long life.
- Electrically bonded.
- 3/4" or 1" BSPT male ends.

Not steel braided.

Not suitable for use with petrol.

Maximum Working Pressure:
50 psi (3.5 bar)



BSPT

0225	Length Metres	Thread
CH4.19	4	3/4"
CH6.19	6	3/4"
CH4.25	4	1"
CH6.25	6	1"

Continental Steel Braided Fuel Hoses

- Suitable with diesel, HVO, kerosene and petrol.
- Tested and approved to EN1360
- BSP parallel chrome plated "swaged for life" end fittings
- Smooth wipe clean covering.
- Excellent fuel and weather resistance.
- Steel braiding provides excellent protection against vandalism and the theft of nozzles by cutting through the hoses.

Maximum Working Pressure:
230 psi (15.8 bar)



BSPP

0225	Length Metres	Thread
PH12.3/4	3.66	3/4"
PH20.3/4	6.1	3/4"
PH12.1	3.66	1"
PH20.1	6.1	1"

Gravity Dispensing Hose

- Gravity dispensing hoses 25mm (1") bore, excellent flexibility to ease handling and strong enough to resist kinking. Supplied with 1" BSPT male end fittings are machine banded on to the hose.

Maximum Temperature:
-15°C to +60°C

Maximum Working Pressure:
43.5 psi



1" BSPT

0225	Length Metres
GDH-4	4
GDH-5	5
GDH-6	6

Tech Sheet 1173

Gravity Fuel Kits

- Only suitable with diesel or biodiesel up to B30.
- Provides simple and quick diesel dispensing from gravity tanks.

Kit includes: hose, valve, nozzle and PTFE tape. 25mm bore delivery hose.

Working Temperature:
-25°C to +45°C

Maximum Working Pressure:
50 psi (3.5 bar)



For use with Diesel/Gasoil

0225	Length Metres
2019-9337	3
2019-9360	5

Tech Sheet 1170

Fuelling Meters

- Suitable with diesel, HVO and biodiesel up to B30.
- Robust nutating disc flow meter shows up to 9999 litres.
- 20 -76 L/min. 1" BSPF ports. Aluminium housing.
- 4 digit register. 8 digit non resettable totaliser.
- Front face can be rotated in 90° increments.

Accuracy: +/-2%
(with adjustable calibration)
Operating Range: 20 - 76 L/min

Maximum Working Pressure:
50 psi (3.5 bar)



2 YEAR WARRANTY

Flow Meter without Strainer, BSPP

0225	Thread
FM4	1"

- Suitable with diesel, HVO, petrol, Kerosene and biodiesel up to B30.
- Robust nutating disc flow meter shows up to 999 litres.
- 19-75 L/min. 1" BSPF ports.
- Accuracy of +/- 2% with adjustable calibration.
- Aluminium housing and cover.
- 3 digit register. 6 digit non resettable totaliser.
- Front face can be rotated in 90° increments.

Accuracy: +/-2%
Operating Range: 19-75 L/min

Maximum Working Pressure:
50 psi (3.5 bar)



2 YEAR WARRANTY

Without Strainer, BSP Female

0225	Thread
807CL	1"

Tech Sheet 1168

This mechanical fuel meter has a flow rate of 20-120 L/min, with a resettable 4 digit totaliser, and a non-resettable 8 digit totaliser, which registers up to 9,999,999.9 Litres.

- Features:**
- Aluminium metering chamber with polybutylene nutating disk.
 - 1" inlet/outlet
 - Accuracy +/-1%

Maximum Working Pressure:
3.5 bar



2 YEAR WARRANTY

8 Digit Non-resettable

0122	J1581400	Tech Sheet 2141
------	----------	-----------------

- Features:**
- Measures diesel, kerosene and petrol.
 - Oval gear design.
 - Low pressure drop allows for gravity and pump (in-line) applications.
 - Supplied with a wire mesh strainer.

Redashe

10 YEAR WARRANTY

Conditions apply.



6 Digit Non-resettable

0122	DM100	Tech Sheet 60368
------	-------	------------------

Digital In-line Turbine Flow Meters

LCD display has a 5 digit register, 7 digit non resettable totalizer. 10 - 100 L/min. 1" BSPF ports. Max pressure: 145 psi (10 bar). Accuracy: +/- 1%. Polypropylene turbine. Designed to fit in line with the delivery hose or pipework. Front can be rotated in 90° increments.



2 YEAR WARRANTY

For Diesel and HVO

0225	K24	Tech Sheet 10554
------	-----	------------------

Adblue



For Adblue®

0225	K24.AB	Tech Sheet 10555
------	--------	------------------



Replacement Battery

0225	To Suit
K24.BATTERY	K24 & K24.AB

Electronic In-line Flow Meters

Material: Aluminium
Seal material viton and fluorinated silicone rubber



Female Thread, BSPP

0225	Thread	Max Pressure Bar	M³/HR
CD-0G01-1	1"	20	200

Fuel Bowl Filters

- Fully interchangeable with other filter elements.
- Suitable with diesel, HVO or biodiesel up to B30.
- Choose particle only or water and particle kit/spare elements both remove particles to 10 micron.
- Fits on the outlet side only. 1" BSPF ports.



BSPF

0225	Thread	Description
FFILT.KIT	1"	Fuel Filter Kit, Particles Only
FFILT.KITW	1"	Fuel Filter Kit, Water/Particles
FFILT.EL	-	Spare Particle Only Element
FFILT.ELW	-	Spare Water/Particle Element

Fuel Filter Kit

- Suitable with diesel, HVO or biodiesel up to B7.
- Removes particle and water contamination to 30 micron.
- Fits on the outlet side only. 1" BSPF ports.
- Kit = aluminium head with disposable spin on element.
- Max flow. 45 litres/min gravity, pump 100 litres/min.
- Buy a complete kit or separate element and head.



BSPF

0225	Thread	Description
HYD.GK	1"	Filter Kit Water & Particles
HYD.ELG	-	Spare Water/Particle Filter

Depuroil Portable Filter & Oil Transfer Unit

The ideal tool for decontaminating oil by removing suspended particles. The filtering unit is composed of a volumetric vane pump that extracts the oil to be purified, sending it through a high-filtering capacity cartridge filter that removes the impurities.

- Suitable for use with oils up to SAE90.
- 230V transfer pump
- Complete with suction and outlet hose.

Maximum Flow:
25 litres/min



10 Micron

0225	Description
WO.DEP	Transfer Unit
WO.DEPF	Spare Element

In-line Fuel Filter Elements



Paper Filter, 6mm OD

0225
25-200



Nylon Filter, 9mm OD Barb

0225
25-202



Nylon Filter, 8mm OD

0225
25-204



Paper Filter, 9mm OD Barb

0225
25-201



Nylon Filter, Elbow 8mm OD

0225
25-203

FUELLING FILTRATION



Fuel Filters & Elements



Fuel Filter

0225	Micron
ZFFL02B	10



Water Block Fuel Filter Element

0225	Micron
ZFEWB	10



Fuel Filter Spin On Cartridge

0225	Micron
ZFFS10BSP	10



Replacement Fuel Filter Element

0225	Micron
ZFE10	10



For Tank Gauges
... see page 1154

Diesel Oil Filters - Series 20100-20150

Maximum Working Pressure:
1 bar



Aluminium, BSPP

0270	Thread	Micron Rating	Filter Surface Area cm ²
20103/AL-100UM	1/4"	100	48
20101/AL-100UM	3/8"	100	48
20103AL4-44UM	1/4"	44	48
20101AL4-44UM	3/8"	44	48
20103CAL-15UM	1/4"	15	228
20101CAL-15UM	3/8"	15	228
20151/AL-100UM	3/8"	100	24

Maximum Working Pressure:
1 bar



Plastic Standard Tenite Bowl, BSPP

0270	Thread	Micron Rating	Filter Surface Area cm ²
20103/PL-100UM	1/4"	100	48
20101/PL-100UM	3/8"	100	48
20103PL4-44UM	1/4"	44	48
20101PL4-44UM	3/8"	44	48
20103CPL-15UM	1/4"	15	228
20101CPL-15UM	3/8"	15	228
20151/PL-100UM	3/8"	100	24

Maximum Working Pressure:
1 bar



Plastic Superior Metocene Bowl, BSPP

0270	Thread	Micron Rating	Filter Surface Area cm ²
20103/PE-100UM	1/4"	100	48
20101/PE-100UM	3/8"	100	48
20103CPE-15UM	1/4"	15	228
20101CPE-15UM	3/8"	15	228
20153/PE-100UM	1/4"	100	24
20151/PE-100UM	3/8"	100	24

Diesel Oil Filters - Series 20200

Maximum Working Pressure:
2 bar



Aluminium, BSPP

0270	Thread	Micron Rating	Filter Surface Area cm ²
20201/AL-100UM	3/8"	100	105
20202/AL-100UM	1/2"	100	105
20201AL4-44UM	3/8"	44	105
20202AL4-44UM	1/2"	44	105
20201CAL-15UM	3/8"	15	235
20202CAL-15UM	1/2"	15	235

Maximum Working Pressure:
1 bar



Plastic Standard Tenite Bowl, BSPP

0270	Thread	Micron Rating	Filter Surface Area cm ²
20201/PL-100UM	3/8"	100	105
20202/PL-100UM	1/2"	100	105
20201PL4-44UM	3/8"	44	105
20202PL4-44UM	1/2"	44	105
20201CPL-15UM	3/8"	15	235
20202CPL-15UM	1/2"	15	235

Diesel Oil Filters - Series 20210

Maximum Working Pressure:
1 bar



Plastic Standard Tenite Bowl with Water Drain Valve, BSPP

0270	Thread	Micron Rating	Filter Surface Area cm ²
20211/PL-100UM	3/8"	100	105
20212/PL-100UM	1/2"	100	105
20212PL4-44UM	1/2"	44	105
20211CPL-15UM	3/8"	15	235
20212CPL-15UM	1/2"	15	235

Diesel Oil Filters with Cock & Check Valve - Series 20250

Maximum Working Pressure:
2 bar



Aluminium, BSPP

0270	Thread	Micron Rating	Filter Surface Area cm ²
20250ALAL4-44UM	3/8"	44	105
20250CAL-15UM	3/8"	15	235

Maximum Working Pressure:
1 bar



Plastic Standard Tenite Bowl, BSPP

0270	Thread	Micron Rating	Filter Surface Area cm ²
20250/PL-100UM	3/8"	100	105
20250PL4-44UM	3/8"	44	105
20250CPL-15UM	3/8"	15	235

Please note: Oil viton seal filters are available upon request.

Diesel Oil Filters with Cock - Series 20230

Maximum Working Pressure: 2 bar



Aluminium, BSPP

0270	Thread	Micron Rating	Filter Surface Area cm ²
20232/AL-100UM	1/2"	100	105
20231AL4-44UM	3/8"	44	105
20232AL4-44UM	1/2"	44	105
20231CAL-15UM	3/8"	15	235
20232CAL-15UM	1/2"	15	235

Maximum Working Pressure: 1 bar



Plastic Standard Tenite Bowl, BSPP

0270	Thread	Micron Rating	Filter Surface Area cm ²
20231/PL-100UM	3/8"	100	105
20231PL4-44UM	3/8"	44	105
20232PL4-44UM	1/2"	44	105
20231CPL-15UM	3/8"	15	235
20232CPL-15UM	1/2"	15	235

Fuel Oil Filters - Series 20300-20350

• Cover and bowl made out of aluminium.

Maximum Working Pressure: 2 bar



Without Heating Element, BSPP

0270	Thread	Micron Rating	Filter Surface Area cm ²
20306/10-100UM	1/2"	100	300
20306/20-200UM	1/2"	200	300
20306/30-300UM	1/2"	300	530
20304/10-100UM	3/4"	100	300
20304/20-200UM	3/4"	200	300
20301/10-100UM	1"	100	300
20301/20-200UM	1"	200	300
20301/30-300UM	1"	300	530

• Cover and bowl made out of aluminium.
• Heating element PTC 20351/03 T150°C - 230 Volts.

Maximum Working Pressure: 2 bar



With Heating Element, BSPP

0270	Thread	Micron Rating	Filter Surface Area cm ²
20356/20-200UM	1/2"	200	300
20356/30-300UM	1/2"	300	530
20354/10-100UM	3/4"	100	300
20354/30-300UM	3/4"	300	500
20351/10-100UM	1"	100	300
20351/20-200UM	1"	200	300
20351/30-300UM	1"	300	500

Fuel Oil Filters - Series 20400-20450

Maximum Working Pressure: 2 bar



Without Heating Element

0270	Thread	Micron Rating	Filter Surface Area cm ²
20401/10-100UM	1"	100	670
20401/30-300UM	1"	300	1130
20402/10-100UM	1.1/4"	100	670
20402/20-200UM	1.1/4"	200	670
20403/10-100UM	1.1/2"	100	670
20403/20-200UM	1.1/2"	200	670
20403/30-300UM	1.1/2"	300	1130

Maximum Working Pressure: 2 bar



With Heating Element

0270	Thread	Micron Rating	Filter Surface Area cm ²
20451/10-100UM	1"	100	670
20453/10-100UM	1.1/4"	100	670
20453/20-200UM	1.1/4"	200	670
20453/30-300UM	1.1/4"	300	1130
20452/30-300UM	1.1/2"	300	1130

Oil Filter Spare Cartridges



To suit Series 20150

0270	Material	Type	Micron Rating
20151/C1-100	Stainless Steel	Smooth	100



To suit Series 20100

0270	Material	Type	Micron Rating
20101/C1-100	Stainless Steel	Pleated	100
20101/C4-44	Stainless Steel	Pleated	44
20101CC5	Paper	-	15



To suit Series 20200

0270	Material	Type	Micron Rating
20201/C1-100	Stainless Steel	Pleated	100
20201/C4-44	Stainless Steel	Pleated	44
20201CC5-15	Stainless Steel	Pleated	15



To suit Series 20300-20350

0270	Material	Micron Rating
20301/C1-100	Stainless Steel	100
20301/C2-200	Stainless Steel	200
20301/C3-300	Galvanized Iron	300



To suit Series 20400-20450

0270	Material	Micron Rating
20401/C1-100	Stainless Steel	100
20401/C3-300	Galvanized Iron	300

Electrical Heater



0270	Material	Voltage	Micron Rating
20351/03	100	230V/50Hz	220
20451/01	300	230V/50Hz	200



0270	To Suit
SET20100	Series 20100
SET20200	Series 20200
SET20250	Series 20250
SET20300	Series 20300
SET20400	Series 20400



For Diesel Drop Hose
... see page 1434

BARREL PUMPS



Piston Oil Pump

- With 1.5m outlet hose, anti-drip 13mm 90° spout, nozzle storage facility.
- Designed to fit awkward access filler points.
- 2" BSPM male thread, pumps on down stroke.



0225	To Suit
J9023SE	20 & 25 Litre Drums

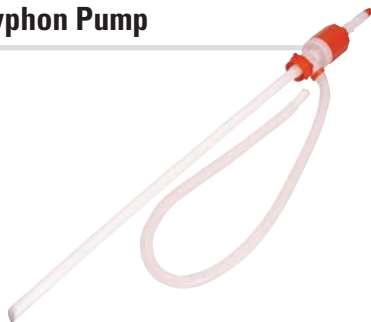
Gear Oil Bucket Pump

- With fully reversible hand rotary pump, clear PVC hose and nozzle.
- 10.5L approx.
- Robust steel base with hard powder coat finish as standard.
- Delivers and retrieves.



0225	Volume Litres
A6000SE	10.5

Syphon Pump



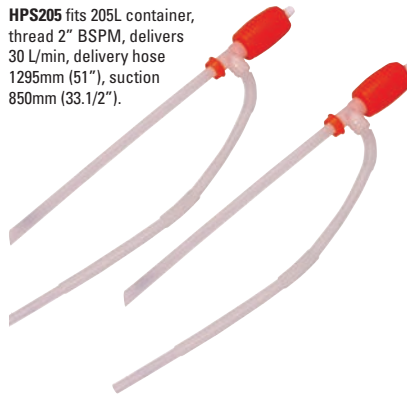
0225	To Suit
J2653	205 Litre Barrels

Manual Syphon Pumps

- Suitable for pumping most liquids: acids, alkalines, antifreeze, de-greaser, distilled water, diesel, biodiesel B100, light oils and solvents.
- Includes delivery hose and suction pipe.

HPS25 fits 5-25L containers, delivery hose 534mm (21"), suction 380mm (15").

HPS205 fits 205L container, thread 2" BSPM, delivers 30 L/min, delivery hose 1295mm (51"), suction 850mm (33.1/2").



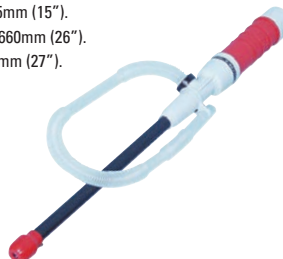
Drum Pumps

0225	To Suit
HPS25	5-25 Litre Drum
HPS205	205 Litre Drum

Battery Operated Syphon Pump

- Unique battery operated pump (2 x D size batteries not supplied).
- Suitable with water, diesel, HVO, light oils & mild / non corrosive chemicals.

Flow Rate: 4 - 7 L/min
Suction Tube: 375mm (15").
Discharge Tube: 660mm (26").
Total Length: 675mm (27").

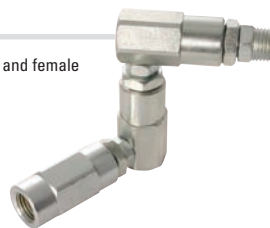


Drum Pump

0225	LPM
HPSB	8-10

Z Swivel

- 1/4" BSPM Male and female



BSPM

0225	Thread
M8090	1/4"

Lever Barrel Pumps

- Suitable with diesel, HVO, biodiesel up to B30 and oils to SAE 90.
- Metal lever action drum pump.
- Capable of up to 20 L/min. 2" BSPM drum adaptor.
- Telescopic suction tube 450 - 900mm.

Note:
pumping speed 20 L/min



0225
2019-9386

Tech Sheet 1171

WHALE Urchin - Diaphragm Hand Pump

- Suitable with clean or dirty diesel, HVO, water and oils to SAE 90.
- Pumps dirty and contaminated liquids with up to 10mm solids
- Made from glass filled polypropylene complete with nitrile seals
- Hose tails accept both 1" and 1.1/2" hoses

Flow Rate:
47 L/min for 1"
68 L/min for 1.1/2"



0225
HPW

Tech Sheet 20034

Lockable Drum Taps



3/4" BSPP

0225
J4175

- All metal



Self Closing, 3/4" BSPP

0225
J4177

Rotary Barrel Pumps

- A robust cast iron rotary barrel pump capable of up to 25 L/min for dispensing fuel or oils. Supplied complete with 1 metre sectioned metal suction pipe and 2" BSP barrel adaptor.



Cast Iron

0225
2042-5658

Tech Sheet 1172

- Suitable with most chemicals and acid based products.
- PVC construction with PTFE vanes and Hastelloy springs.
- 3 piece suction pipe. Capable of up to 25 L/min.



PVC Rotary Hand Pump

0225
MSSPVC

Semi Rotary Pumps

- Suitable with diesel, light oils and water.
- Semi rotary double acting.
- Cast iron body with brass internals.
- Flanged inline threaded ports.

Choose from:

- 1/2" K0 version
- 3/4" K1 version
- 1" K2 version
- 1.1/2" K5 version

Note: never mount horizontally.



Semi Rotary Hand Pumps

0121	Size	Thread
SEMI0	0	1/2"
SEMI1	1	3/4"
SEMI2	2	1"
SEMI3	3	1.1/4"

- Kit fits into 2" socket, for use on 205 litre drums and tanks up to 1.5 metre deep.
- 1" semi-rotary hand pump.
- Manual nozzle.
- Tank/pump connector.
- 4 metre x 3/4" outlet hose.



Semi Rotary Pump Kit

0121	Description
SRG2A.KIT	1" BSP Hand Pump Kit

MANUAL TRANSFER PUMPS



Gear Oil Pump

- Suitable with high viscosity oils, ideal for filling gear boxes. Telescopic suction tube 300 - 500mm.
- Polypropylene pump, mild steel piston and nitrile seals.
- Dispenses approximately 100ml per stroke.
- Has a 1.5m outlet hose with spout.
- Spout can be drained by locating back into pump body.
- Supplied with two adaptors as standard: One fits most 25L external Plysu threads (60mm dia). The other fits most 25L Trisure/Valorex thread (56mm dia).

Option: Universal adaptor, locks onto any external thread that is less than 61mm dia.



0225	Description
HPGO	Pump
ADAPT.UNIL	Adaptor

Oil Suction Gun

For getting oil in/out of gearboxes, transfer cases and differentials.

- Suitable for use with non corrosive liquids.
- Capacity 500cc with 300mm PVC hose.
- Deluxe lip seal provides maximum suction.
- Steel barrel in premium powder coated finish.
- Fully serviceable.
- No priming required.



0225	OSG
------	-----

Liquid Suction/Extraction Units

- Novel device that both sucks and stores extracted liquids.
- Suitable for fuels, water, oils and many other liquids.

Removes: Oil from vehicles, lawn mowers, motorbikes, hydraulic reservoirs without draining, simply insert the suction pipes in the dipstick hole. Water from bunded fuel tank cabinets, fish tanks, bilges and otherwise inaccessible areas. Fuel spillages from bunded tanks/fill point cabinets.

- Can even suck up surface puddles.
- Prime the handle and watch it work.
- Supplied with suction probes to fit most applications.
- Lightweight and portable. 17 litre version has castors.
- When full, remove top plug to pour out the contents.

A must have for any engineers/site van multipurpose pump.



Suction/Extraction Units

0225	Capacity Litres
HP.SUC2	2.7
HP.SUC6	6.5
HP.SUC17	17

DOSING PUMPS

MixRite 3.5 Series

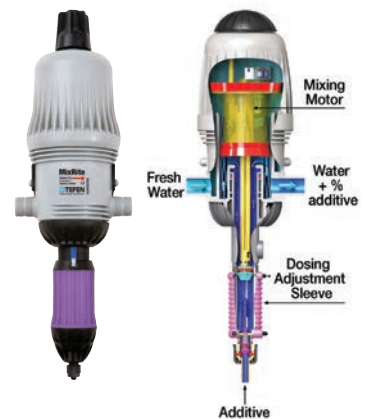
Tefen's MixRite line of water driven proportional dosing pumps, are used to ensure precise additive injection directly into the water or fluid line under various flow rates, feed ratios and different ranges of pressure.

Features

- Mixes additive and water precisely
- The dosage can be adjusted easily and quickly
- Repair is simple and inexpensive
- Key internal parts are from the highest quality material available (Hastelloy spring, Viton Rubber seal)

Working Temperature:
4°C to +40°C

Maximum Working Pressure:
8 bar



3/4" BSPT Male

0471	LPH	Max Pressure Bar	Dosage Rate
MRDP-1	10-3500	0.2-8	1:333 - 1:500
MRDP-2	10-3500	0.2-8	1:1000 - 1:111
MRDP-3	10-3500	0.2-8	1:333 - 1:50
MRDP-4	10-3500	0.2-8	1:200 - 1:20
MRDP-5	50-3500	0.2-8	1:100 - 1:10

Tech Sheet 60239

12V Submersible Transfer Pump

- Only suitable with diesel, biodiesel B30 and water to 80°C.
- Maximum Flow: 18 L/min. Length 145mm, diameter 47.5mm.
- 12V centrifugal submersible pump.
- 3m outlet hose (1/2"). (500 hour life expectancy).
- 4m long battery cable and clips. Weight 0.6kgs.
- Continuously rated for periods up to 1 hour.

NOTE: DO NOT RUN DRY

Maximum Working Pressure:
15 psi (1 bar)



0225	Voltage	LPM
12SP18	12V	18

Electric Oil Transfer Pump

Designed for pumping and transferring all grades of oils up to SAE 90. Suitable for lubricating oils, hydraulic oils, gear oils etc. Complete with on/off switch and internal bypass, it has 3/4" BSP threaded ports and is also supplied with a pair of 1" hose tails. Pumping rate depends on grade of oil and temperature.

- IP55 rated



2033-5279



VISCO.110

0225	Voltage
2033-5279	230V
VISCO.110	110V
Tech Sheet 1174	

On-demand Diaphragm Pumps

- Only suitable for use with agricultural chemicals or water
- For spraying and transferring liquids
- With pressure switch and fittings
- Self priming to 2m
- EPDM diaphragm
- 1/2" and 3/4" barb plug-in ports



12V

0225	Description
DP12.17	17L/min, 40 psi (2.8 bar)

Portable Diesel Pump Kits

- Suitable with diesel, HVO, and biodiesel up to B30.
- Choice 12V or 24V. 40 L/min pumping speed.
- 40 L/min pumping speed.
- Sturdy steel case complete with carry handle
- On/off switch and bypass valve.
- 4m long battery cable with crocodile clips.
- UK made 6m of suction/delivery hose.
- Brass foot valve and strainer must be fitted or warranty void.

Maximum Run Time:
30 mins.



Manual, BSPP

0225	Thread	Voltage
12PA.KIT1C	1"	12V
24PA.KIT1C	1"	24V

Professional Battery Diesel Pump Kits

- Suitable with diesel, HVO, empties a 205L drum in 5 mins.
- 40L/min, 4m battery cable with crocodile clips.
- Carry handle, on/off switch, bypass valve.
- UK made suction/delivery hose 6 metres in total.
- Aluminium nozzle with hose swivel.
- Complete kit for barrel/portable transfer.

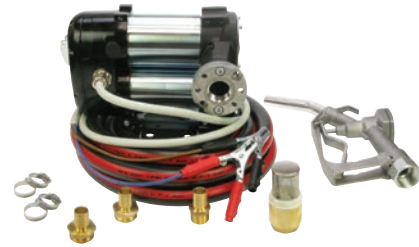
Maximum Run Time:
30 mins.



0225	Voltage	LPM
12PA.KIT1B	12V	40
24PA.KIT1B	24V	40

High Speed Battery Diesel Pump Kits

- Suitable with diesel, HVO or biodiesel up to B30.
- Maximum Flow: 70 L/min. 12V.
- 1" BSPF inlet and outlet flanges.
- PIUSI Direct drive vane pumping unit with bypass valve.
- Switch, 4m long battery cable and crocodile clips.
- Weatherproof for outdoor use.
- Maximum run time: 30 mins.
- Kit includes 7m suction/delivery hose, foot valve and strainer.
- Choose manual or automatic nozzle kit.



0225	Nozzle
12BIKIT	Manual
12BIKIT2	Automatic

Battery Diesel Transfer Pumps

- Suitable with diesel, HVO and biodiesel up to B30.
- Ideal for mounting into plant equipment, excavators etc.
- Maximum Flow: 40 L/min.
- 3/4" BSPF ports.
- Choose 12V or 24V. 3/4" BSPF ports.
- Direct drive vane pumping unit with bypass valve.
- Foot mounting plate.
- Weatherproof to IP54 for outdoor use.
- Complete with switch, carry handle.
- 4m long battery cable and crocodile clips.

Maximum Run Time: 30 mins.



0225	Voltage
12PA.BARE	12V
24PA.BARE	24V

ELECTRICAL TRANSFER PUMPS



Professional Diesel Transfer Pumps

- Suitable with diesel, HVO and biodiesel up to B30.
- Pumping speeds 50, 80 or 100 L/min. 230V.
- Direct drive, self priming, vane pumping units.
- 1" BSPF ports. Switch and 2m long mains cable.
- Integral filter and bypass.
- Weatherproof to IP55 for outdoor use.
- Continuously rated motor with thermal cut out.
- Full range of spares available.



2 YEAR WARRANTY

0225	Voltage	LPM
SPT60A	230V	50
SPT80A	230V	80
SPT100A	230V	100

230V Professional Diesel Pump Kits With Automatic Nozzle

- Suitable for use with diesel, HVO or biodiesel up to B30.
- Manual operated on/off switch.
- Pumping speeds choose 45 or 75 L/min option.
- Meter accuracy of +/- 2%. 4 digit resettable register.
- 8 digit non resettable totaliser.
- Weatherproof to IP55. Integral filter and bypass valve.
- 230V continuously rated motor with thermal cut out.
- 4m delivery hose.
- Supplied with automatic nozzle.
- Self priming pump unit.
- Dimensions 300mm H x 350mm W x 500mm D (including nozzle).

45 Litres per Minute: Ideal to fill cars/vans vehicles with small fuel tanks.

75 Litres per Minute: Ideal to fill vehicles with large fuel tanks.



2 YEAR WARRANTY

45 Litres per Minute

0225	Nozzle
ECON45	Automatic

75 Litres per Minute

0225	Nozzle
ECON75	Automatic

AIR OPERATED TRANSFER PUMP



Polypropylene Air Operated Diaphragm Pump

- 1:1 ratio. Max operating pressure 116 psi/8 bar.
- Rugged Polypropylene body.
- Viton diaphragm.
- Maximum solids pumped = 3mm diameter.
- Air inlet 1/4".
- Suitable for Adblue® and antifreeze.



BSPP

0225	Thread	LPM	Seal
ADP.60PV	3/4"	60	Viton

Aluminium Air Operated Diaphragm Pump

- 1:1 ratio. Max operating pressure 116 psi/8 bar.
- Rugged aluminium body.
- Nitrile diaphragm.
- Maximum solids pumped = 3mm dia.
- Air inlet 1/4". 325mm H x 255mm W x 210mm D



BSPP

0225	Thread	LPM	Seal
ADP.60AV	3/4"	60	Viton
ADP.90AN	1"	90	Nitrile

Tech Sheet 10578

Pneumatic Pumps



Oil Pumps

0122	Ratio	Description
J100	01:01	940mm Suction Tube
J300S	03:01	270mm Suction Tube
J500S	05:01	270mm Suction Tube

Tech Sheet 2053

MANUAL & COMPRESSED AIR TRANSFER PUMPS & KITS



Hand Operated Fuel Oil & Liquid Pumps



Lubeworks Lever Hand Pump Fuel Oil

0122	Description
J1703001	Lever Hand Pump



Lift Pump Polypropylene Fuel Oils

0122	Description
HPLP	Lift Pump

Driven Fuel Transfer Pumps



Portable Fuel Transfer Pump Kit 12V & 24V

0122	Voltage
J10304022	12V
J10304024	24V



Fuel Transfer Pump

0122	Description
J1500451	Transfer Pump

Pneumatic Oil Pumps & Dispensers



Pneumatic Oil Pump Kit

0122	Description
J100TDG	Oil Pump Kit



Wall Mounted Oil Dispensing Kit

0122	Description
C808MODK	Oil Dispensing kit



Fully Enclosed Fuel Transfer Pump

0122	Description
J1500450	Transfer Pump



Break Couplers for Fuel

0122	Size
ZBKV34N	3/4"
ZBKV01N	1"

Oil Delivery

- Mobile oil dispensing units suitable for dispensing oil at medium/high viscosity, for mobile installations and fixed systems at medium distances. The drum trolley allows the system to be moved around the workshop with ease, giving increased efficiency. All items are available separately or in kit form.



- Self-contained oil pump supplied with a 16 litre (4.23 gallon) container with handle. Fitted with a 48" (4ft) fuel-resistant soft PVC hose with nozzle for clean discharge.

Features:

- 16 litre powder-coated container
- Variable handle setting for light or heavy fluids
- Recommended for transmission differentials and heavier oils
- Not suitable for water-based fluids or other corrosive media



Oil Delivery System

0225	Description
JOS200	Oil Delivery System with Hose Reel
JOS100	Oil Delivery System without Hose Reel
Tech Sheet 60363	

- Pneumatic oil dispenser equipped with level gauge and delivery gun with flexible end.
- Works autonomously without the requirement of continuous connection to air supply.



Maximum Working Pressure:
10 bar



Oil Delivery System

0225	Capacity Litres	Max Pressure Bar
JPOD030	30	10
JPOD065	65	10
Tech Sheet 60364		

Oil Delivery System

0225	Capacity Litres
ZOLP16	16
Tech Sheet 60365	

Oil Drum Transportation

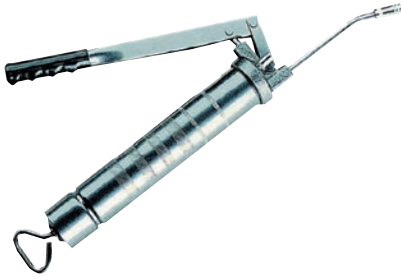


Drum Trolleys

0225	To Suit
J1708001	12.5-50kg Drums
J1708003	205 Litre/180kg Drums
Tech Sheet 60362	

Grease Guns

- Universal gun for use with cartridges (400cc) or bulk grease (500cc).



Side Lever Gun

0088
2017-3506

- Rigid tube and locknut, 4-jaw connector and filler/bleed nipple
- Universal gun for use with cartridges (400cc) or bulk grease (500cc)
- Heavy-duty follower



Heavy-duty Lever Gun

0088
2017-3514

- One hand pistol grip with rigid tube and 4-jaw connector
- Universal gun for use with cartridges (400cc) or bulk (500cc)



Pistol Grip Gun

0088
2017-3555

Grease Hoses

- **Maximum Working Pressure:** 400 bar
- **Burst Pressure:** 900 bar



Single Steel Braid Rubber Hose, Male Thread, BSPP

0088	Thread	Length
2017-3654	1/8"	12"
2017-3662	1/8"	18"

Nylon Braid Hoses Polyamide Coated, Male Thread, BSPP

0088	Thread	Length
2017-3670	1/8"	12"
2017-3688	1/8"	18"



Rigid Stem with 4 Jaw Connector

0088
2017-3720

Lithium No.2 Grease Cartridge

Multi purpose bearing grease No.2 consistency for conventional applications.



0088	Volume Grams
2017-6780	400

GREASING & LUBRICATION EQUIPMENT



Heavy-duty Lever Grease Gun



0122
J1786004

Pistol Grip Grease Gun



0122
J1786501

Groz Dual Pistol/Lever Handle Grease Gun

Features:

- 2 way operating telescopic handle
- **Pistol type:** Ideal for use in confined space
- **Lever type:** For high pressure and high volume application
- Integrated high volume/high pressure adjustable mechanism
- Aluminium die cast head fitted with bulk loader and air bleeder valve
- Non-slip comfortable vinyl grip handle
- Filling options: 400gm (14oz.) grease cartridge, bulk, suction or filler pump
- Suitable for use with NLGI 1, 2 and 3 grease

new product



0122
ZG77

Tech Sheet 71693

Quick Grease Filler Gun

Features:

- Simple method of filling grease reservoir
- Reduces the chances of cross contamination
- Suitable for use with 400g grease cartridges or bulk grease
- Barrel manufactured from high quality zinc plated steel

new product



0122	Barrel Length	Barrel Diameter
ZSGGR400T	370mm	56mm
Tech Sheet 71690		

Grease Filler Pumps



Lubeworks The Lubrication Experts

Air Operated Grease Pump Kit

0122	Description
J1708001	Optional Drum Trolley

GREASING & LUBRICATION EQUIPMENT

Grease Guns

A unique single hand operated grease gun of superior quality for the professionals. The short stroke operation delivers 52,000kPa/7,500 psi/520 bar whilst the flexible extension allows you to access nipples that are normally hard to reach. The gun can be filled by one of three ways: cartridge, bulk or J2 grease pump.

Features:

- Short stroke operation
- Easy one hand operation
- Flexible outlet with Supergrip KY Coupler
- Delivers 0.8gm per shot
- Filler/bleeder nipple 1/4" BSP (M)



Professional Flexi Grease Gun

0122
K32

A high quality lever grease gun for the professionals. This lever gun is engineered for high pressure greasing providing up to 69,000kPa/10,000 psi/690 bar. The lever gun can be filled by one of three ways: cartridge, bulk or J2 grease pump.

Features:

- Rigid outlet with Supergrip KY Coupler
- Delivers 1.5gms per shot
- Filler/bleeder nipple 1/8" BSP (M)
- Fully repairable



Professional Lever Grease Gun

0122
K40

Tech Sheet 10579

For fast and easy loading of grease guns. The pump allows you to buy grease more economically whilst the fully sealed system keeps out any contaminants.

Features:

- Suitable for 12.5 kegs
- Delivers 54gms per stroke
- Fully sealed system keeps grease clean



J2 Grease Pump

0122
J2

The P3 power-lube is the ultimate economical, high pressure air powered greasing system. To suit 12.5kg grease pails. At the recommended air pressure of 690kPa/100 psi/ 7 bar the 50:1 ratio air motor provides fast and continuous greasing at 34,500kPa/5,000 PSI/345 bar. The grease pressure can be boosted to 69,000kPa/ 10,000 psi/690 bar simply by squeezing the gun trigger several times.

Features:

- Non corroding air motor
- 4m delivery hose
- Handles up to NLG1 No2 greases
- Delivers 460gms of grease per minute
- Suitable for 12.5kg grease kegs



P3 Air Operated Power-Lube

0122
P3

Tech Sheet 10580

The P6 Maxi-Lube is the ultimate in economical high pressure air powered greasing systems. To suit 50kg grease pails. 690kPa/100 psi/7 bar the 50:1 ratio air motor provides fast and continuous greasing at 34,500kPa/5,000 psi/345 bar. The grease pressure can be boosted to 69,000kPa/10,000 psi/690 bar simply by squeezing the gun trigger several times.

Features:

- Non corroding air motor
- 4m delivery hose
- Handles up to NLG1 No2 greases
- Delivers 460gms of grease per minute
- Suitable for 50kg grease kegs



P6 Air Operated Maxi-Lube

0122
P6

Refillable Bearing Lubricator

The refillable automatic bearing lubricators are high quality, mechanical, chemical and thermal resistant. Designed to provide constant lubrication to bearings, bushings, joints, articulated joints or wherever constant greasing is required.

Features:

- Supplied with medium tension springs
- Suitable for all types of grease NLGI 0-1-2-3-4
- Setting dial (1, 3, 6 and 12 months) supply duration

Material Body: Transparent lexan

Working Temperature: -30°C to +132°C

Maximum Working Pressure: 200 psi



0122	Capacity Millilitres
MCGL100	100
MCGL220	220

Tech Sheet 2143

GREASING & LUBRICATION EQUIPMENT



Pneumatic Pumps

JG-50 Drum cover, 385mm/50-60kg. Follower plate 370mm/50-60kg, grease gun, Z swivel. JG-12 Drum cover, 280mm/12kg. Follower plate 265mm/12kg. Connection hose SAE R2 13" x 1/4", grease gun, Z swivel.



Grease Pumps

0122	Ratio	Description
JG-50	50:1	740mm Suction Tube
JG-12	50:1	480mm Suction Tube

Grease Pumps

GR.H12.L High pressure, direct feed grease pump. Fits directly onto 12.5Kg keg. Rubber edged follower plate. 1.2m high pressure outlet hose. 4 jaw connector. GR.BFILL.L Low pressure high volume grease pump. Pumps grease up to NGLI2, fits 12.5kg kegs. 1.2m outlet hose and quick release female connector.



High Pressure

0225
GR.H12.L

Low Pressure

0225
GR.BFILL.L

For filling grease guns with bulk grease, up to NGLI2. Fits directly onto 12.5kg kegs. Fills grease guns fast. Enables you to buy grease in bulk, saving money.



Grease Gun Filler Pump

0225
GR.GGFILL.L

Mobile Grease Dispensers

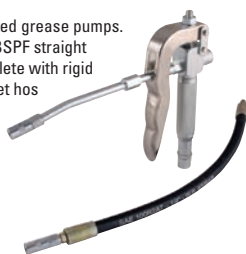
50:1 ratio air operated grease pump. 4 wheeled trolley. 4m of 1/4" bore delivery hose. Grease gun complete with straight swivel. GR.AM12.5C fits 12.5kg grease keg. 280mm diameter drum cover. 265mm diameter follower plate. GR.AM50C fits 50kg grease keg. 385mm diameter drum cover. 370mm diameter follower plate.



0225	To Suit
GR.AM12.5C	12.5kg Keg
GR.AM50C	50kg Keg

Grease Control Gun & Accessories

For use with air operated grease pumps. Inlet connection 1/4" BSPF straight swivel. Supplied complete with rigid spout and flexible outlet hos with 4 jaw connection. Option Z swivel. Spare straight swivel available.



Grease Gun

0225
GR.AGUN.C

1/4" Z Swivel

0225
GR.ASWIV.C

1/4" Straight Swivel

0225
GR.ASWIV.S

High Volume Side Lever Grease Gun

Designed for ease of use with min effort that any gun can offer. Delivers 1.1/2 times more grease than most grease guns and generates pressure up to 10,000 psi (690 bar). Machined to precision tolerances (die cast head, 1.2mm barrel). Accepts either 400cc cartridges or 500cc bulk fill. Supplied with rigid spout 4 jaw connector and bulk filling load .



0225
GR.G3HV

High Volume Pistol Grip Grease Gun

Industrial pistol grip/one handed grease gun. Used for greasing in confined spaces/restricted access. Unique variable stroke feature allows increased pressure from short strokes and high volumes from full strokes (7500 psi 517 bar). Machined to precision tolerances (die cast head, 1.2mm barrel). Accepts either 400cc cartridges or 500cc bulk fill.

Supplied with 225mm flexible spout and 4 jaw connecto . Fitted with unique bulk filling load , doubles as an air bleed.



0225
GR.G6HV

Grease Fitting Unblocker

Opens clogged grease fittings/loosens hardened grease joints. Maintains and protects bearings, control arms, joints, king pins etc. Tap with a hammer to force light viscosity oil through the tool into the coupler and finally into the grease joint - breaking up and removing dirt and debris. Built in hand guard for added safety. Flexible hose attachment reaches fittings in difficult areas. Comes with a grease coupler for connection onto the grease fitting and 2 spare piston|seal for replacing as they wear out.



0225
GR.FU

Portable Greasing System

Ideal for heavy plant and site use. Foot operated. Suitable for grease up to and including NLGI 2. Foot operated by pressing on the spring loaded system. Hose is then charged with grease ready for dispensing. A single charge dispenses 30 shots of grease. Super dispensing gun has high pressure and high volume settings. High pressure 0.45gm per shot, high volume 1.25gms per shot. High pressure feature is useful to open blocked grease fittings. Comes with drum cover (dia 216mm) rubber lined follower plate, 1.5m hose and 5kg plastic grease bucket/drum.



0225
GR.PGS

Grease Nipples, Stainless Steel



45° Angle, Male Thread

0088	Thread
SSGN0245	1/8" BSPT
SSGN0245N	1/8" NPT
SSGN0445	1/4" BSPT
SSGNM645	M6 x 1
SSGNM845	M8 x 1
SSGNU0445	1/4" UNF



90° Angle, Male Thread

0088	Thread
SSGN0290	1/8" BSPT
SSGN0290N	1/8" NPT
SSGN0490	1/4" BSPT
SSGNM690	M6 x 1
SSGNM890	M8 x 1
SSGNU0490	1/4" UNF



Straight, Male Thread

0088	Thread
SSGN02	1/8" BSPT
SSGN02N	1/8" NPT
SSGN04	1/4" BSPT
SSGN04N	1/4" NPT
SSGNM6	M6 x 1
SSGNM8	M8 x 1
SSGNU04	1/4" UNF

Grease Nipple Covers



0225
PNR

Grease Nipples

80 piece assorted straight and angled grease nipples.
Imperial contains BSP/BSF/UNF.
Metric contains M6/M8/M10.



Box of Assorted Grease Nipples

0225	Thread
J9130/80	BSP/BSF/UNF
J9131/80	M6/M8/M10

For Manual Grease System
...see page 1647

Grease Nipples



Angled Male Thread, BSPT

0088	Angle	Thread
2017-3829	45°	1/8"
2017-3845	45°	1/4"
2017-3811	65°	1/8"
2017-3787	90°	1/8"
2017-3795	90°	1/4"

Angled Male Thread, Metric

0088	Angle	Thread
GNM645	45°	M6 x 1
GNM845	45°	M8 x 1
GNM690	90°	M6 x 1
GNM890	90°	M8 x 1

Angled Male Thread, NPT

0088	Angle	Thread
GN0245N	45°	1/8"
GN0445N	45°	1/4"
GN0290N	90°	1/8"
GN0490N	90°	1/4"

Angled Male Thread, UNF

0088	Angle	Thread
GNU0445	45°	1/4"
GNU0490	90°	1/4"



Straight Male Thread, BSPT

0088	Thread
2017-3738	1/8"
2017-3746	1/4"

Straight Male Thread, Metric

0088	Thread
GNM6	M6 x 1
GNM8	M8 x 1

Straight Male Thread, NPT

0088	Thread
GN02N	1/8"
GN04N	1/4"

Straight Male Thread, UNF

0088	Thread
GNU04	1/4"



16mm Double Hexagon Head (15mm A/F) Male Thread, BSPP

0088	Thread
2017-3860	1/8"
2017-3878	1/4"

16mm Double Hexagon Head (15mm A/F) Male Thread, NPT

0088	Thread
GNTH02N	1/8"
GNTH04N	1/4"



16mm Round Head Male Thread, BSPP

0088	Thread
2017-3886	1/8"
2017-3894	1/4"

For use with greasing units on hydraulic type nipples (DIN 71412). Precision fit jaws are hardened for extended life.



Maximum Working Pressure:
500 bar

Jaw Grease Connectors

0088	Length mm	Type
2017-3621	37	Valved
2017-3639	37	Unvalved

For use with greasing units on button and hexagon head grease nipples.



Maximum Working Pressure:
400 bar

Slide-on Connector

0088
2017-3647

For use with greasing units on button and hexagon head grease nipples.

Maximum Working Pressure:
400 bar



Hook-on Connector

0088
2017-3696

For use with greasing units on button and hexagon head grease nipples.

Maximum Working Pressure:
400 bar



Knuckle Jointed Slide-on Connector

0088
2017-3712

Adaptors



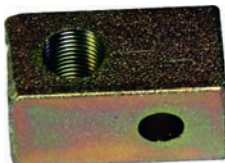
Straight, Male Connector

0382	Male Thread	Female Thread
SMF04U/02	1/4" UNF	1/8"
SMFM6/02	M6 x 1 Taper	1/8"
SMFM8/02	M8 x 1 Taper	1/8"



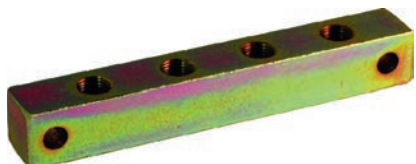
Battery Plate Adaptor, Brass, BSPP

0382	Female Thread	Tube OD mm
BPAM02-06-1	1/8"	6
BPAM02-06-2	1/8"	8



Anchor Block (One Way), Female Thread, BSPP

0382	Thread	Length mm	Width mm	Depth mm
ABS02-1	1/8"	30	15	15



Multi Point Anchor, Female Thread, BSPP

0382	Thread	Length mm	Ports
ABS02-2	1/8"	62	2
ABS02-4	1/8"	108	4
ABS02-6	1/8"	154	6

Lubrication Compression Fittings, Type LL

Suitable for oil and grease applications



Straights, Steel Zinc Plated

0382	OD mm	Thread
LU-1130	4	M6 x 1
LU-1140	4	M8 x 1
LU-1150	4	M10 x 1
LU-1160	4	1/8"
LU-1170	6	M6 x 1
LU-1180	6	M8 x 1
LU-1190	6	M10 x 1
LU-1200	6	1/8"
LU-1210	6	1/4"

stainless steel



Straights, 304 Stainless Steel

0382	OD mm	Thread
LU-1220SS	6	M6 x 1
LU-1230SS	6	M8 x 1
LU-1240SS	6	M10 x 1
LU-1250SS	6	1/8"



Elbows, Steel Zinc Plated

0382	OD mm	Thread
LU-1000	4	M6 x 1
LU-1010	4	M8 x 1
LU-1020	4	M10 x 1
LU-1030	4	1/8"
LU-1040	6	M6 x 1
LU-1050	6	M8 x 1
LU-1060	6	M10 x 1
LU-1070	6	1/8"
LU-1080	6	1/4"

Maximum Working Pressure:
100 bar

stainless steel



Elbows, 304 Stainless Steel

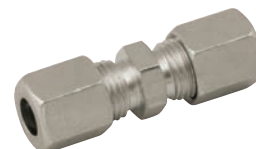
0382	OD mm	Thread
LU-1090SS	6	M6 x 1
LU-1100SS	6	M8 x 1
LU-1120SS	6	1/8"



Unions, Steel Zinc Plated

0382	OD mm
LU-1260	4
LU-1270	6

stainless steel



Unions, 304 Stainless Steel

0382	OD mm
LU-1290SS	6



Compression Nuts, Steel Zinc Plated

0382	OD mm
LU-1300	4
LU-1310	6

stainless steel



Compression Nuts, 304 Stainless Steel

0382	OD mm
LU-1340SS	6



Compression Rings, Steel Zinc Plated

0382	OD mm
LU-1320	4
LU-1330	6

Lubrication Push-in Fittings

Material: Brass plated.
Suitable for use with oil and grease.

Maximum Working Pressure:
60 bar



Straights

0382	OD mm	Thread
LU-1360	4	M6 x 1
LU-1370	4	M8 x 1
LU-1380	4	M10 x 1
LU-1390	4	1/8"
LU-1400	6	M6 x 1
LU-1410	6	M8 x 1
LU-1420	6	M10 x 1
LU-1430	6	1/8"



Elbows

0382	OD mm	Thread
LU-1440	4	M6 x 1
LU-1450	4	M8 x 1
LU-1460	4	M10 x 1
LU-1470	4	1/8"
LU-1480	6	M6 x 1
LU-1490	6	M8 x 1
LU-1500	6	M10 x 1
LU-1510	6	1/8"



Swivel Unions, Metric

0382	OD mm	Thread
LU-1540	6	M6 x 1
LU-1550	6	M8 x 1
LU-1560	6	M10 x 1



Unions

0382	OD mm
LU-1520	4
LU-1530	6



Swivel Unions, BSPT

0382	OD mm	Thread
LU-1570	6	1/8"

Lubrication Adaptors

Material: Galvanised steel.
Suitable for use with oil and grease.



45° Male/Female Elbows, Metric

0382	Thread
LU-1580	M8 x 1
LU-1590	M10 x 1



90° Male/Female Elbows, Metric

0382	Thread
LU-1610	M6 x 1
LU-1620	M8 x 1
LU-1630	M10 x 1



45° Male/Female Elbows, BSPT

0382	Thread
LU-1600	1/8"



90° Male/Female Elbows, BSPT

0382	Thread
LU-1640	1/8"

Material: Brass.
Suitable for use with oil and grease.



Banjo Male/Female Elbows, Metric

0382	OD mm	Thread
LU-1650	4	M8 x 1
LU-1670	6	M6 x 1
LU-1680	6	M8 x 1
LU-1690	6	M10 x 1



Banjo Male/Female Elbows, BSPT

0382	OD mm	Thread
LU-1700	6	1/8"

High Pressure Hose & Accessories



Non-filled Reinforced Hose 600 to 840 Bar, 10 Metre Coil

0382	ID mm	OD mm
LU-1710	4	8.75
LU-1730	6.3	11.3

Grease Filled Reinforced Hose 600 to 840 Bar, 10 Metre Coil

0382	ID mm	OD mm
LU-1720	4	8.75

Straight Inserts, Steel Zinc Plated



0382	ID mm	OD mm
LU-1740	4	8.75
LU-1750	6	8.75

stainless steel



Straight Inserts, Stainless Steel

0382	ID mm	OD mm
LU-1760SS	6	8.75

90° Inserts, Steel Zinc Plated



0382	ID mm	OD mm
LU-1780	6	8.75
LU-1790	8	11.3

Ferrule, Zinc Plated



0382	OD mm
LU-1800	8.75
LU-1810	11.3

stainless steel



Ferrule, Stainless Steel

0382	OD mm
LU-1820SS	8.75
LU-1830SS	11.3

Lubrication & Pumping Equipment

Three inch air motor, provides more power to create better flow.

NXT Air Valve, designed to reduce icing in continuous use applications and uses less air than competitive pumps for better efficiency. Easy to repair or replace without tearing down internal pump components for less downtime.

Modular air valve, air inlet and exhaust locations are easy to configure with just four bolts for simple, hassle free installations.

Built-in thermal relief and inlet strainer, built-in thermal relief protects your equipment from thermal expansion without the need to buy and install an additional kit.

Inlet strainer (oil only) is built-in to protect pump from contaminants that can damage your pump.

Connections:

Air line 1/4" BSP

Fluid outlet 1/2" BSP

Inlet 1" BSP

900mm plastic down tube (can be cut down as required).



LD Range Oil Pumps

0382	Ratio	LPM
24G581	3:1	9.8
24G593	5:1	7.6



Wall Mount Bracket

0382	To Suit
24F910	24G5 Series Pumps

Remote Grease Systems

Contents:

- 1 x 1/8" BSP 2 way block
- 2 x 1/8" BSP straight grease nipples
- 4 x 1/8" BSP x 6mm straights
- 2 x M8 x 1 straight compression fittings
- 30 metre of 6 x 3mm semi rigid black nylon tube



2 Point

0382
BAT03

Contents:

- 1 x 1/8" BSP 6 way block
- 6 x 1/8" BSP straight grease nipples
- 6 x M6 x 1 x 6mm straight compression fittings
- 6 x 1/8" BSP x 6mm straight compression fittings
- 30 metre of 6 x 3mm semi rigid black nylon tube



6 Point

0382
BAT06

Manual Grease System

Contents:

- 1 x 1 litre manual pump
- 1 x 4 way grease block
- 1 x 81-5261-1/4 x 6mm straight
- 8 x 1/8" BSP x 6mm fitting
- 30 metre coils of 6 x 3 semi rigid black nylon tube
- 6 x 1 way pipe clips
- Suitable for soft grease NLGI NO 000,00,0
- For use on small machinery, direct feed on to bearings
- 1.00cc delivery per stroke
- Max discharge pressure 150 bar



4 Point

0382
PROG12

Grease Coupler & Bracket

- This quick disconnect grease coupler is designed for quick and convenient disengagement of the coupler from the grease/zerk fittings under pressure.

Maximum Working Pressure:
550 bar



Quick Disconnect Coupler

0088	Thread
ZHC203B	1/8"
Tech Sheet 60358	

- Simple snap-action clamp for safe storage of grease guns and suction guns.



Grease Gun Bracket

0225	To Suit
ZGGH01	Barrel Diameter 57mm
Tech Sheet 60380	

Hydraulic Swivel Adaptor

- Professional 360° hydraulic adaptor, three jaw, 1/8" BSPT thread and hex nut.

Maximum Working Pressure:
483 bar



360° Swivel

0088	Thread
ZHCSW3B	1/8"
Tech Sheet 60359	

Thread Gauge

Threads:

NPT: 1/8", 1/4", 3/8"

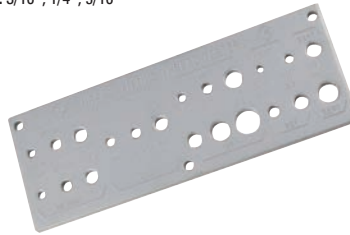
Metric: M6 x 1, M6 x 0.75, M8 x 1, M8 x 1.25, M10 x 1, M10 x 1.5

BSPT: 1/8", 1/4"

UNF/ANF: 1/4", 5/16", 3/8"

BSW: 1/4", 5/16", 1/2", 3/8"

BSF: 3/16", 1/4", 5/16"



To suit Grease Nipples

0382	
ZTHT01	
Tech Sheet 60361	

Extra Long Grease Coupler

The coupler will not move thus allowing a hands free operation

- Suitable for battery, air and manual operated grease guns
- Slim line diameter 17mm
- Unique 6 point contact design
- Length: 80mm

new product

1 YEAR WARRANTY



Extra Long Quick Disconnect Coupler

0122	Thread BSPTF	Max Pressure PSI/Bar
ZHC21XL	1/8"	8000/550
Tech Sheet 71692		



For Hand Wet Wipes
...see page 1761

Pressure Hoses

Working Temperature:
-40°C to +100°C



For use with Oil, 1/2" BSPP
Male/Female x 1/2" ID 1 Wire Hose

0300	Max Pressure PSI	Length mm
1BMF0808-600	2320	600
1BMF0808-800	2320	800
1BMF0808-2000	2320	2000
1BMF0808-4000	2320	4000
1BMF0808-10000	2320	10000



For use with Grease, 1/4" BSPP
Male/Female x 1/4" ID 2 Wire Hose

0300	Max Pressure PSI	Length mm
2BMF0404-600	5800	600
2BMF0404-1500	5800	1500
2BMF0404-4000	5800	4000
2BMF0404-10000	5800	10000



For use with Air & Water, 3/8" BSPP
Male/Female x 3/8" ID Hose

0300	Max Pressure PSI	Length mm
AW-R6-600	1620	600
AW-R6-2000	1620	2000
AW-R6-4000	1620	4000
AW-R6-10000	1620	10000

Long Life Flexible Oil Lines

Working Temperature:
-40°C to +100°C



R1, 1/4" BSPP Female/
Female x 1/4" ID 1 Wire Hose

0300	Max Pressure PSI	Length mm
1BFF0404-600	3260	600
1BFF0404-750	3260	750
1BFF0404-1000	3260	10000

Working Temperature:
-40°C to +90°C



Thermoplastic, 1/4" BSPP Female/
Female x 1/4" ID 1 Wire Hose

0300	Max Pressure PSI	Length mm
7BFF0404-600	2755	600
7BFF0404-750	2755	750
7BFF0404-1000	2755	10000

Workshop Manual Pressure Test Pump

Designed for pressure testing hoses, pipework radiators and boilers etc. Can use with water or oil for testing. Comes with a gauge to monitor the pressure in the line. Fills the line you are testing with fluid from the reservoir. Comes complete with 2m delivery hose.

- 1/2" BSPM connector.
- Brass pump with anodised aluminium piston
- Housed in a 5 litre capacity steel reservoir
- Delivery per stroke: 12cc



Maximum Working Pressure:
209psi (20 bar).

0225
PTP

QUICK, CLEAN AND SAFE OIL CHANGES



WHAT ARE THE ADVANTAGES OF THE FEMCO DRAINAGE SYSTEMS?

- The Femco oil drain plug reduces downtime
- You can drain oil at engine temperature, safely
- You can drain oil in an environmentally friendly way, because oil spillages are prevented
- Oil is contained from sump to container
- Eliminates the risk of stripped threads
- Tool-less oil changing; all you need is the drain hose

HOW DOES THE FEMCO OIL DRAIN PLUG WORK?

- 1) Remove the dust cover from the drain plug
- 2) Screw the Femco drain connector with hose onto the drainage system
- 3) The fluids are captured and flow straight to the container

WHICH OIL DRAIN PLUG SUITS MY APPLICATION THE BEST?

Femco produces a lot of oil drain plugs and they are all specialised for different applications.

- The Standard oil drain plug is installed when there is enough space available
- The Compact oil drain plug is used where space is restricted
- The Click Drain is used for a large number of vehicles
- The XL oil drain plug is used to drain a large amount of oil
- The Quick Drain is used for stationary machinery

WHERE CAN I FIND AN OIL DRAIN PLUG IN THE RIGHT SIZE?

Femco has a product range covering over 500 thread types and sizes. We can also make custom thread sizes. Please call us; we can help you to find the right size.

WHAT ARE THE DRAIN PLUGS MADE FROM?

All our oil drain plugs are made from solid brass.

CAN I USE A FEMCO OIL DRAIN PLUG IN COMBINATION WITH AN OIL EXTRACTOR PUMP?

All Femco oil drainage systems can be connected with an oil extractor pump.

CAN I PERFORM AN OIL CHANGE WHILE THE OIL IS STILL HOT?

All Femco oil drain plugs are produced from solid brass and can be used to drain oil at engine temperature.

IS IT POSSIBLE TO DRAIN FLUIDS OTHER THAN OIL?

The Femco oil drain plugs can be used to drain all kinds of fluid such as engine oil, coolant, gearbox oil and hydraulic oil.

WHAT HAPPENS IF I GET WATER IN MY FUEL TANK?

Femco drain plugs are ideal for draining condensation from fuel tanks.

HOW DO I PERFORM AN OIL CHECK?

Femco has produced various sampling nipples to make it easy to check the viscosity of the oil.

HOW CAN I CHANGE THE OIL IN A DIFFICULT-TO-REACH PLACE?

Femco can provide you with angled and extended drain connectors or special adaptors to drain oil even in the tightest spaces.

CAN A FEMCO OIL DRAIN PLUG BE FITTED WITH A MAGNET?

All Femco oil drain plugs can be provided with a magnet, which can be inspected after draining the oil.

WHO DOES FEMCO ALREADY SUPPLY?

Femco already supplies their drainage systems to companies like:

- | | | |
|-------------|-----------|------------------|
| • Emirates | • JCB | • Bell Equipment |
| • MANN | • VDL | • Alfagomma |
| • Hitachi | • Daimler | |
| • Air China | • Kobelco | |

QUICK OIL DRAIN PLUGS

Standard Drain Plugs

The Standard Drain – the original Femco® oil drain plug – was introduced in 1983 to change oil in a quick, clean and environmentally friendly way. The Standard Drain is manufactured out of 100% brass, which makes it easy to change hot oil. Additionally, the oil drain plugs are fitted with a dust cover and a double O-Ring, which protect the plug and ensure a reliable performance.

Application: Engine oil, hydraulic oil, gearbox oil, coolant, lubricating oil

Material: Brass outside and inside, stainless steel spring

Valve: Brass with Viton O-Ring/valve

Dust Cap: Brass, thread size LB: M26 x 1.5/SB: 22 x 1.5

Dust Cap Seal: NBR O-Ring

Body Seal: Viton O-Ring

Working Temperature:
-20°C to +200°C



NPT

0710	Thread
6060020141	1/4"
6060020142	3/8"
6060020143	1/2"
6060020140	3/4"
6060020145	1"
Tech Sheet 68080	

UNF

0710	Thread
6080020109	1/2"-20
6080020113	3/4"-16
6080020115	7/8"-14
6080020119	7/8"-20
6080020120	1"-12
Tech Sheet 68080	

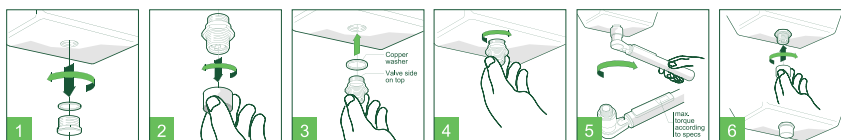
Metric

0710	Thread
6090020030	M12 x 1.5
6090020033	M14 x 1.5
6090020036	M16 x 1.5
6090020038	M18 x 1.5
6090020040	M20 x 1.5
6090020046	M22 x 1.5
6090020053	M24 x 1.5
Tech Sheet 68080	

BSPP

0710	Thread
6070020130	1/4"
6070020131	3/8"
6070020132	1/2"
6070020134	3/4"
6070020141	1"
Tech Sheet 68080	

Installing FEMCO® Drain Plugs (Standard and Compact)



Standard Drain Accessories



Straight Drainer, with Hose

0710	Thread	To Suit Hose ID mm	Length mm
650103	M26 x 1.5	18	250
Tech Sheet 68080			



90° Drainer, with Hose

0710	Thread	To Suit Hose ID mm	Length mm
650108	M26 x 1.5	18	250
Tech Sheet 68080			



Dust Cap & Chain

0710	Thread
650113	M26 x 1.5
Tech Sheet 68080	



45° Drainer, with Hose

0710	Thread	To Suit Hose ID mm	Length mm
650121	M26 x 1.5	18	250
Tech Sheet 68080			



For Hydraulic Oils
...see page 283

QUICK OIL DRAIN PLUGS

Compact Drain Plugs

The Compact Drain is the smallest Femco® oil drain plug, and is the perfect choice for oil changes in tight spaces. The Compact plug only extends 12 millimetres from the sump, and is often used in vehicles with a low ground clearance such as cars, buses and motorcycles. You can install the compact plug on any vehicle without worrying about the available space.

Application: Engine oil, hydraulic oil, gearbox oil, coolant, lubricating oil
Material: Brass outside and inside, stainless steel spring
Valve: Brass with Viton O-Ring/valve
Dust Cap: Brass, thread size LB: M24 x 1,5/SB: 20 x 1.5
Dust Cap Seal: NBR O-Ring
Body Seal: Viton O-Ring

Working Temperature:
 -20°C to +200°C



NPT

0710	Thread
7060020406	1/4"
7060020407	3/8"
7060020408	1/2"
7090020411	3/4"
7060020413	1"
Tech Sheet 68080	

UNF

0710	Thread
7080020354	1/2"-20
7080020360	7/8"-14
7080020363	7/8"-18
7080020378	1 1/8"-12
7080020372	5/16"-12
Tech Sheet 68080	

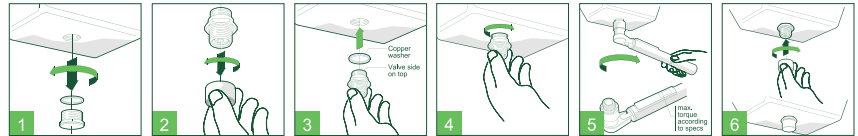
Metric

0710	Thread
7090020178	M12 x 1.5
7090020181	M14 x 1.5
7090020184	M16 x 1.5
7090020186	M18 x 1.5
7090020189	M20 x 1.5
7090020195	M22 x 1.5
7090020203	M24 x 1.5
Tech Sheet 68080	

BSPP

0710	Thread
7070020395	1/4"
7070020397	3/8"
7070020398	1/2"
7070020399	3/4"
7070020401	1"
Tech Sheet 68080	

Installing FEMCO® Drain Plugs (Standard and Compact)



Compact Drain Accessories



Straight Drainer, with Hose

0710	Thread	To Suit Hose ID mm	Length mm
750005	M24 x 1.5	18	250
Tech Sheet 68080			



45° Drainer, with Hose

0710	Thread	To Suit Hose ID mm	Length mm
750013	M24 x 1.5	18	250
Tech Sheet 68080			



90° Drainer, with Hose

0710	Thread	To Suit Hose ID mm	Length mm
750010	M24 x 1.5	18	250
Tech Sheet 68080			



Dust Cap

0710	Thread
750028	M24 x 1.5
Tech Sheet 68080	

QUICK OIL DRAIN PLUGS

Click Drain Plugs

The Click Drain enables you to perform quick, clean and environmentally friendly oil changes. The Click Drain is manufactured out of solid brass. This material is heat resistant, ensuring you can safely change hot fluids such as engine oil. You can use the oil drain valve without using any specialist tools. In addition to this, it is easy to take oil samples using the Click Drain. The Click Drain oil drain valve also incorporates a locking system to ensure an effective seal, creating a clean working environment.

Click Drain plugs make oil changes on your vehicles and machines quick and easy. This oil drain system consists of a plug and a clicker. When it is time for an oil change, you simply click the clicker onto the plug to start draining the oil. The Click Drain plug is often used in combination with the Femco® oil extractor pump, and is the ideal solution for small maintenance tasks on fleets of vehicles

Applications: engine oil, hydraulic oil, gearbox oil, coolant, lubricating oil

Material: brass outside and inside, stainless steel spring

Valve: Brass with viton O-Ring/valve

Dust Cap: brass, thread size LB: M26 x 1.5/SB: 22 x 1.5

Dust Cap Seal: NBR O-Ring

Body Seal: Viton O-Ring

Advantages of the Quick Drain oil drain valve:

- Reduction of downtime
- Easy operation
- Clean oil changes
- Change hot oil safely
- No tools required
- Easy way to sample oil



Working Temperature:
-20°C to +200°C

NPT

0710	Thread
8060020511	1/4"
8060020512	3/8"
8060020513	1/2"
8060020514	3/4"
8060020516	1"
Tech Sheet 68080	

BSPP

0710	Thread
8080020501	3/8"
8080020502	1/2"
8080020504	3/4"
8080020505	3/4" (Extended thread length)
8080020506	1"
Tech Sheet 68080	

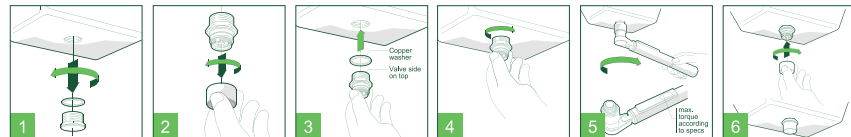
UNF

0710	Thread
8080020482	3/4"-16
8080020483	7/8"-14
8080020486	7/8"-18
8080020487	7/8"-20
8080020489	1"-14
8080020492	1.1/2"-12
Tech Sheet 68080	

Metric

0710	Thread
8090020420	M12 x 1.5
8090020423	M14 x 1.5
8090020425	M16 x 1.25
8090020428	M18 x 1.5
8090020430	M20 x 1.5
8090020436	M22 x 1.5
8090020443	M24 x 1.5
Tech Sheet 68080	

Installing FEMCO® Drain Plugs (Click Drain)



Click Drain Accessories



Drain Connector, Solo Click, BSPP

0710	Thread
851000	1/2"
Tech Sheet 68080	



Drain Connectors, Double Click, BSPP

0710	Thread
851017	1/2"
851013	3/4"
851019	1"
Tech Sheet 68080	

TANK LEVEL GAUGES

Tank Gauge - Ideal For Domestic Tanks

- Reads the oil level and sends the reading to an indoor receiver
- Suitable with diesel, HVO, kerosene, oil, biodiesel, water, antifreeze and Adblue®
- Fits plastic tanks up to 3 metres deep. Easy to retrofit
- The transmitter needs a 20mm or 32mm hole on top of the tank
- No power required at the gauge, has a long-life lithium battery
- Comes with an electronic receiver that plugs into a 230V socket
- Receiver can be up to 200 metres away from the tank
- Tank level is displayed in ten graduations



0225	Length Metres
APOL1	3

Tank Gauge - Remote Reading

- Simple hydrostatic tank contents gauge
- Suitable with diesel, biodiesel, HVO, oils, water and Adblue®
- UNITOP suits tanks from 0.9 metre to 3.2 metre high
- Probe has 1/2" BSP male tank fitting
- Readout can be sited up to 20 metres away from the tank
- Shows percentage of full tank contents
- Calibrate on site to suit tank
- Pull the plunger and release to show tank contents



0225	Description
UNITOP	Rectangular/Cylinder Tanks

Tank Gauge - Float

- Suitable for diesel, heating oil, lube oils or water, antifreeze and biodiesel up to B100.
- Gauge provides a simple, rough indication of tank contents
- Shows EMPTY 1/4, 1/2, 3/4 or FULL
- Mounts directly into the top of tank
- Accuracy +/- 5%
- Now suitable with HVO.



0225	Thread	Length Metres
FG4E	1.1/2"	1.2
FG6E	1.1/2"	1.8

Tank Gauge - Float

- Commonly used on oil and fuel drums, the float has a polyethylene construction which allows it to be used with a wide range of liquids including water, coolants etc.
- Face of indicator is fitted with a display marked from 0 to 210 litres. Reversing the display gives graduations from 0 to 55 gallons.
- Note that this is not a precise measuring device. The gauge is only to give an approximate level of liquid in the drum to know when to arrange a new drum.



Drum Level Indicator

0122	Thread
ZDL134N	3/4"

Tech Sheet 71696

Funnels & Measures



Plastic Funnel

0225	Capacity Litres
ZFNL8	1.75
ZFNL9B	3



Flexible Spout Measure

0225	Capacity Litres
ZFSM1	1
ZFSM5	5

Fluid Drain Pans

Capacity: 17 Litres
 Approx. Diameter: 460mm
 Height: 150mm



Oil/Fluid Drain Pan, 17 Litre

0261	
DRP03	Tech Sheet 1144

Oil Drain Pans



Oil Drain Pans

0225	Capacity Litres
OPAN6	6
OPAN14	14

Features:

- High density polyethylene construction
- Closed design for safe and spill free disposal
- Large 8" (200mm) opening with catch all basket to hold small parts and filters.
- Integrated handle for easy carrying and handling
- Stores upright or flat without any leakage
- Complete with wheels for slosh and spill free mobility
- Recommended to be used with oil and antifreeze
- Approx. size (457mm x 406mm x 127mm)



High Density Polyethylene Oil Drain Pan

0122	Capacity Litres
ZODP15	14
	Tech Sheet 71694

Chemical Pressure Sprayer

- Brake cleaner and chemical pressure sprayer.



0225	Capacity Millilitres
J0002	1000

Garage Funnel

- 12" (260 x 170) HDPE with universal filter box.



Garage Funnel Complete with Filter

0225	
J8055/12SE	

UK Type Funnels

- HDPE Anti-Spill Funnel with filter and flexispout.



Complete with Strainer

0225	Size
J8055/6	6"
J8055/9	9"

- HDPE Flexispout oil measures



Complete with Measure & Flexible Spout

0225	Capacity Litres
J8057/1N	1
J8057/2N	2
J8057/3N	3
J8057/5N	5

4 Piece Plastic Funnel Set

- Capacity: 430ml (15oz), 245ml (8.5oz), 120ml (4.2oz) and 40ml (1.4oz)
- Diameter: 125mm (5"), 100mm (4"), 75mm (3") and 50mm (2")
- High rim works as an effective splash guard
- Recommended use: Diesel, Gasoline, Kerosene, Urea, Oils, Antifreeze and other water based media
- Do not use with: Acids and other media at temperatures above 60°C (140°F)

Redashe



0122	
ZFNL4ST	
Tech Sheet 71688	

R Grip

- Single coil "R" grips with bright zinc plate finish.



Pack of 100

0225	Bore Size mm
J0787	2
J1181	3
J1373	3.5
J1574	4
J1968	5
J2362	6

Linch Pins

- Linch pins with 3.5mm wire dia O-Ring.
- Bright zinc plate and gold passivate finish.



Linch Pins, Pack of 100

0225	Bore Size mm
J0250	6
J0312	8
J0437	11

- Safety linch pin with
- O-Ring 54mm usable length.



Safety Linch Pins, Pack of 100

0225	Bore Size mm
J7502	9

Heavy-duty, Brass Water Guns

- Inlet connection: 1/2" BSPP
- Automatic shut-off
- Adjustable spray pattern
- Rubber insulated body and handle
- Scuff resistant
- Trigger lock

Note: not suitable for use with steam.

 **Maximum Working Temperature:**
+50°C

 **Maximum Working Pressure**
25 bar

BSPP Inlet, Brass

1369	Thread	Colour
WASH-GUN	1/2"	Blue
REDWASH-GUN	1/2"	Red



Heavy-duty, Stainless Steel Hygienic Water Guns

- Colour coded for use in hygienic zone systems
- Inlet connection: 1/2" BSPP
- Automatic shut-off
- Adjustable spray pattern
- Non-marking rubber insulated body and handle
- Trigger lock

 **Maximum Working Temperature:**
+90°C (intermittent use)

 **Maximum Working Pressure**
25 bar

BSPP Inlet, Stainless Steel

1369	Thread	Colour
HYGWASH-GUN	1/2"	White
HYGWASH-GUNR	1/2"	Red
HYGWASH-GUNG	1/2"	Green



WASHDOWN & CLEANING PRODUCTS



Water Guns



Water Gun

1369	Inlet BSPP
WG02	1/2"

• Blue available to order



Stainless Steel Water Gun

1369	Colour	Female Inlet BSP	Flow Rate
XGNSS	White	1/2"	25
XGNSSR	Red	1/2"	25

WASHDOWN & CLEANING PRODUCTS



High Pressure Water Quick Release Coupling & Plug

Interchangeable with:
Nito High Pressure Water Coupling
40 Series water coupling

Maximum Working Pressure:
210 bar



Female Coupling, BSPP

1369	Thread
PWQRC-38	3/8"



Female Plug, BSPP

1369	Thread
PWQRP-38	3/8"

Couplings to suit A Series Nozzles



1/4" BSPP Female Quick Release Coupling

1369
CDC-14F-14M-B



1/4" BSPP Male Quick Release Coupling

1369
CDC-14M-14M-B

Coupling & Adaptor



1/4" Brass Bayonet, Female

1369
CDAX



WATER GUN

NiTO Ergo Water Gun

Hot-water gun with an elegant design with focus on ergonomics, quality and functionality. The shape ensures a thermal protection of the handle. The trigger is protected against unintentional activation for safety, and can be locked for prolonged use. Infinitely variable flow regulation optimises the water quantity, whatever the task. Made of impact-resistant composite material with a high resistance to chemicals.

Maximum Working Temperature:
+40°C

Maximum Working Pressure:
6 bar



1068	Coupling Size
40525A3	1/2"
40500A3	3/4"

NiTO II Industry Water Gun

Maximum Working Temperature:
+90°C

Maximum Working Pressure:
25 bar



BSPP

1068	Thread
30550A3	3/4"

NiTO II Spray Nozzles



For 15mm & 20mm Hose

1068	Nozzle
20000A4	1/2"

3/4" Female Thread

1068	Nozzle
20300A9	3/4"



NiTO I Water Gun

Maximum Working Temperature:
+40°C

Maximum Working Pressure:
6 bar



With On/Off & Linear Flow Control

1068	Thread
53800A1	1/2"
63820A1	3/4"

NiTO Safety Couplings

Note: 6151SA8 suitable for NiTO II industry water gun.



1068	ID
6151SA8	1/2"
6150SA8	3/4"

NiTO Safety Plugs

Note: 61640A8 suitable for NiTO II industry water gun.



1068	ID
61640A8	1/2"
61650A3	3/4"

NiTO O-Rings for High Pressure Couplings



1068	Description
1107A8	Viton 20 Shore
1108A8	Viton 17 Shore

NiTO High Pressure Water Couplings

Maximum Working Temperature:
+100°C

Maximum Working Pressure:
250 bar

Material: Brass and chromium plated
• Coupling set suitable for KEW high pressure cleaners



Complete Coupling, Female, BSPP

1068	Thread
65506B3	3/8"
Tech Sheet 20361	



Female, BSPP

1068	Thread
65500B3	3/8"
Tech Sheet 20361	



Male, BSPP

1068	Thread
6550NB3	M22 x 1.5
Tech Sheet 20361	

NiTO High Pressure Water Plugs

Maximum Working Temperature:
+100°C

Maximum Working Pressure:
250 bar

Material: Brass and chromium plated



Female Metric & BSPP

1068	Thread
65610B9	3/8"
65632B9	M22 x 1.5

NITO Original Water Couplings

Wide range of couplings that solve all thread and hose combination.



1/2" SYSTEM



Working Temperature:
-30°C to +80°C

Maximum Working Pressure:
25 bar

Material:
Brass nickel plating

Seal:
Nitrile

Couplings



Male, BSPP

1068	Thread	Operation
5350NA3	1/2"	No Valve
5353NA3	1/2"	Valved
5352NA3	3/4"	No Valve



Female, Metric & BSPP

1068	Thread	Operation
53500A3	1/2"	No Valve
53520A3	3/4"	No Valve
53530A3	3/4"	Valved
5353GA3	M22 x 1	Valved



Hose Tail

1068	To Suit Hose ID	Operation
5349SA3	3/8"	No Valve
5350SA3	1/2"	No Valve
5351SA3	3/4"	No Valve
5353SA3	1/2"	Valved
5354SA3	3/4"	Valved

Plugs



Male, Metric & BSPP

1068	Thread
5364BA3	3/8"
5364OA3	1/2"
5364AA3	3/4"



Female, Metric & BSPP

1068	Thread
5361OA3	1/2"
5361AA3	3/4"
5362OA3	M22 x 1



Hose Tail

1068	ID	ID mm
5360DA3	1/4"	6
5360BA3	3/8"	8
5360OA3	1/2"	13
5360CA3	5/8"	16



Equal

1068
5365OA3



Double Hose Tail

1068	ID
5360AA3	1/2" & 3/4"



To suit Water Gun, BSPP

1068	Thread
53611A3	1/2"

Adaptors



Reducing Bush

1068	Male Thread	Female Thread
53690A3	1/2"	3/4"
63690A3	3/4"	1"
53700A3	1/2"	M22 x 1



Reducing Bush

1068	Male Thread	Female Thread
5371AA3	3/4"	1/2"



Reducing Bush

1068	Male Thread	Female Thread
5349BA8	1/2"	3/8"
5349OA8	3/4"	1/2"

Hose Union



BSPP

1068	Thread	To Suit Hose ID
53670A3	1/2"	1/2"

Adjustable Nozzle



1068	ID
53750A3	1/2"

1/2" SYSTEM



Working Temperature: -30°C to +80°C
 Maximum Working Pressure: 25 bar
 Material: Brass nickel plating
 Seal: Nitrile

Hose Union Washer



1068
1-290A8

NiTO O-Rings



1068
53470A8

NiTO Washers



1068 Description
53440A8 1/2"

3/4" SYSTEM



Working Temperature: -30°C to +80°C
 Maximum Working Pressure: 25 bar
 Material: Brass nickel plating
 Seal: Nitrile

Couplings



Female, BSPP

1068	Thread	Operation
63500A3	3/4"	No Valve
63530A3	3/4"	Valved



Hose Tail

1068	To Suit Hose ID	Operation
6353SA3	3/4"	Valved
6350SA3	3/4"	No Valve

Hose Union



1068	To Suit Hose ID	ID
6367AA3	3/4"	1/2"
63670A3	3/4"	3/4"

Adjustable Nozzle



1068	ID
63750A3	3/4"

Plugs



Male, BSPP

1068	Thread
6364AA3	1/2"
63640A3	3/4"



Female, BSPP

1068	Thread
6361AA3	1/2"
63610A3	3/4"

Hose Tail



1068	To Suit Hose ID	To Suit Hose ID mm
6360BA3	1/2"	13
63600A3	3/4"	16

Double Hose Tail



1068	To Suit Hose ID
6360AA3	1" & 3/4"

NiTO O-Rings



1068
63470A8

NiTO Washers



1068
63440A8

Redashe



For Hose Reels
see pages 1456-1462



1" SYSTEM

Working Temperature:
-30°C to +80°C

Maximum Working Pressure:
25 bar

Material:
Brass nickel plating

Seal:
Nitrile

Couplings



Female, BSPP

1068	Thread	Operation
73500A3	1"	No Valve
73530A3	1"	Valved

Plugs



Male, BSPP

1068	Thread
73640A3	1"



Female, BSPP

1068	Thread
73610A3	1"



Hose Tail

1068	To Suit Hose ID
7360BA3	3/4"
73600A3	1"



CLICK™ SYSTEM

Working Temperature:
-30°C to +80°C

Maximum Working Pressure:
25 bar

- Click™ coupling system for the professional market
- compatible with the most popular plastic couplings
- The same high quality as the original NiTO couplings
- 5 year function guarantee
- Complete programme for the trade and industry, house and garden

Couplings



Male, BSPP

1068	Thread
5950NA3	1/2"



Hose Tail

1068	To Suit Hose ID
5949SA3	3/8"
5950SA3	1/2"
5951SA3	3/4"



Female, BSPP

1068	Thread
5952GA3	1/2"



Hose Tail with Valve

1068	To Suit Hose ID
5953SA3	1/2"

Plugs



Male, BSPP

1068	Thread
59640A3	1/2"



Female, BSPP

1068	Thread
5961GA3	1/2"



Hose Tail

1068	To Suit Hose ID
59600A3	1/2"



Double Hose Tail

1068	To Suit Hose ID
5960AA3	1/2" & 3/4"

NiTO Original Stainless Steel Quick Release Couplings

stainless steel



Coupler to Female, BSPP

1068	Thread	Coupling Size
54500A3	1/2"	1/2"
54520A3	3/4"	1/2"
64500A3	3/4"	3/4"

stainless steel



Coupler to Hose Tail

1068	To Suit Hose ID	Coupling Size
5450SA3	1/2"	1/2"
6450SA3	3/4"	3/4"

stainless steel



Valve Couplers to Female, BSPP

1068	To Suit Hose ID	Coupling Size
54530A3	3/4"	1/2" with Valve
64530A3	3/4"	3/4" with Valve

stainless steel



Valve Couplers to Hose Tail

1068	To Suit Hose ID	Coupling Size
5453SA3	1/2"	1/2" with Stop Valve
6453SA3	3/4"	3/4" with Stop Valve

stainless steel



Nipple Couplers to Female, BSPP

1068	Thread	Coupling Size
54610A3	1/2"	1/2"
5461AA3	3/4"	1/2"
64610A3	3/4"	3/4"

stainless steel



Nipple Couplers to Male, BSPP

1068	Thread	Coupling Size
54611A3	1/2"	1/2"
64611A3	3/4"	3/4"

stainless steel



Nipple Coupler to Double Hose Tail

1068	To Suit Hose ID	Coupling Size
5460AA3	1/2" & 3/4"	1/2"

stainless steel



Nipple Couplers to Hose Tail

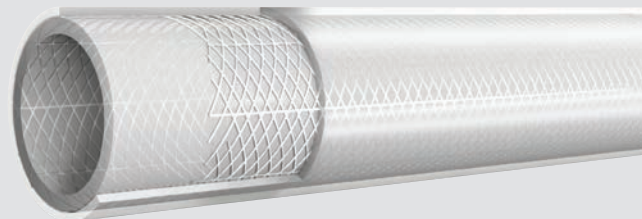
1068	To Suit Hose ID	Coupling Size
54600A3	1/2"	1/2"
64600A3	3/4"	3/4"

stainless steel



Male to Hose Tail, BSPP

1068	Thread	To Suit Hose ID
64670A3	3/4"	3/4"



For **Food Certified Reinforced PVC Braided Hose**
see page **1406**

WASH DOWN EQUIPMENT



Pressure Washer Lances

- Inlet connection: 3/8" BSPP
- Maximum flow: 25 L/min
- 15° spray pattern nozzle

Maximum Working Temperature: +150°C

Maximum Working Pressure: 280 bar

- Hand grip options: moulded or vented.
- Lance style options: straight or 15° bend.
- Length options: 430-900mm.

Straight Moulded Grip

1369	Thread	Length mm	Max Pressure Bar
PRESSURE-LANCESH	3/8"	430	250
PRESSURE-LANCE	3/8"	900	280

15° Moulded Grip

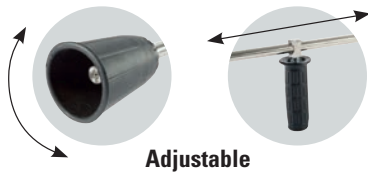
1369	Thread	Length mm	Max Pressure Bar
PRESSURE-LANCE15	3/8"	900	280

Straight, Vented Grip

1369	Thread	Length mm	Max Pressure Bar
PRESSURE-L500V	3/8"	500	280
PRESSURE-L635V	3/8"	635	280
PRESSURE-L760V	3/8"	760	280
PRESSURE-L900V	3/8"	900	280

15° Vented Grip

1369	Thread	Length mm	Max Pressure Bar
PRESSURE-L15500V	3/8"	500	280
PRESSURE-L15635V	3/8"	635	280
PRESSURE-L15760V	3/8"	760	280
PRESSURE-L15900V	3/8"	900	280



Maximum Working Temperature: +150°C

Maximum Working Pressure: 280 bar

Solid Moulded Hand Grip, BSPP

1369	Thread	Length mm
CD-2502	3/8"	900

Vented Moulded Hand Grip, BSPP

1369	Thread	Length mm
CD-2501	3/8"	900



- Inlet connection: 3/8" BSPP
- Maximum flow: 40 L/min
- Solid moulded or vented hand grips
- Nozzle holder and protector

- 15° spray pattern nozzle
- 900mm lance length
- Adjustable high/low pressure nozzle
- Extra hand grip allows the user more control of the spray

Pressure Washer Trigger & Lance Assemblies

° Maximum Working Temperature:
+150°C

Flow: 40 L/min

High Flow, Short Lance, BSPP



1369	Thread	Length mm	Max Pressure Bar
PWLA1	3/8"	400	310

Flow: 40 L/min

High Flow, Long Lance, BSPP



1369	Thread	Length mm	Max Pressure Bar
PWLA2	3/8"	900	250

Flow: 25 L/min

Low Flow, Twin Lance with Top Control, BSPP



1369	Thread	Length mm	Max Pressure Bar
PWLA3	3/8"	1060	280

Flow: 30 L/min

High Flow, Twin Lance with Top Control, BSPP



1369	Thread	Length mm	Max Pressure Bar
PWLA4	3/8"	1060	310

Flow: 25 L/min

Low Flow, Twin Lance with Handle, BSPP



1369	Thread	Length mm	Max Pressure Bar
PWLA5	3/8"	1060	280

Flow: 40 L/min

High Flow, Twin Lance with Handle, BSPP



1369	Thread	Length mm	Max Pressure Bar
PWLA6	3/8"	1060	345

Flow: 25 L/min

stainless steel

Low Flow, Twin Stainless Steel Lance with Top Control, BSPP



1369	Thread	Max Pressure Bar
PWLA7	3/8"	280

Flow: 40 L/min

stainless steel

High Flow, Twin Stainless Steel Lance with Handle, BSPP



1369	Thread	Max Pressure Bar
PWLA8	3/8"	250

Flow: 25 L/min

stainless steel

Low Flow, Twin Stainless Steel Lance with Handle, BSPP



1369	Thread	Max Pressure Bar
PWLA9	3/8"	280

Flow: 40 L/min

stainless steel

High Flow, Twin Stainless Steel Lance, with Top Control, BSPP



1369	Thread	Max Pressure Bar
PWLA10	3/8"	250

Wash Down Lance & Trigger

Our high pressure water assembly has a 900mm zinc plated straight lance, single moulded hand grip, nozzle holder and protector.

Maximum Flow: 40

° Maximum Working Temperature:
+150°C

Maximum Working Pressure:
310 bar

High Pressure, High Flow, Long Lance, BSPP



1369	Thread	Length mm	Max Pressure Bar
1002-0038	3/8"	900	310

Please note: Nozzles not included. See page 1674 for nozzles.

Pressure Lance Configurator

PWAA-14F

PWAA-14M

See page 1673

PWAB-14M

21-051

21-049

PWAB-14F

PWAB-22MM

PWAB-22FF

See page 1673

CDQ1500

CDQ1900

CDQ1600

CDQ2100

ST7

ST900

SW-ST4

SW-ST6

See page 1670

CDE

See page 1675

BC-13

BA-16

BD-20

CDBB-20

BMG-20

CDBJ-20

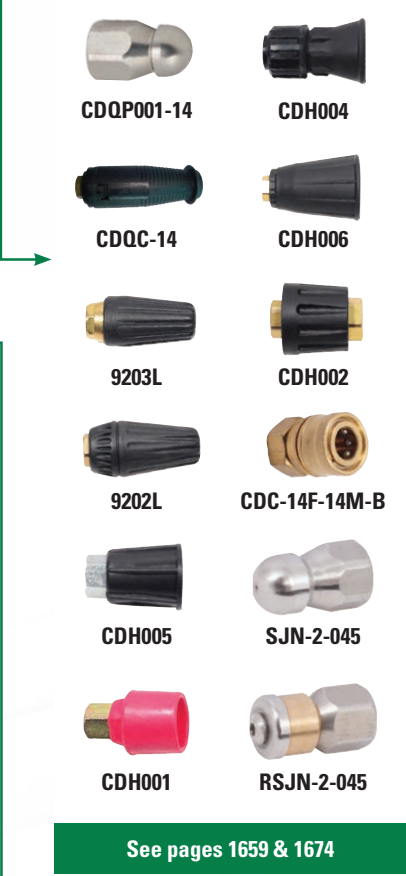
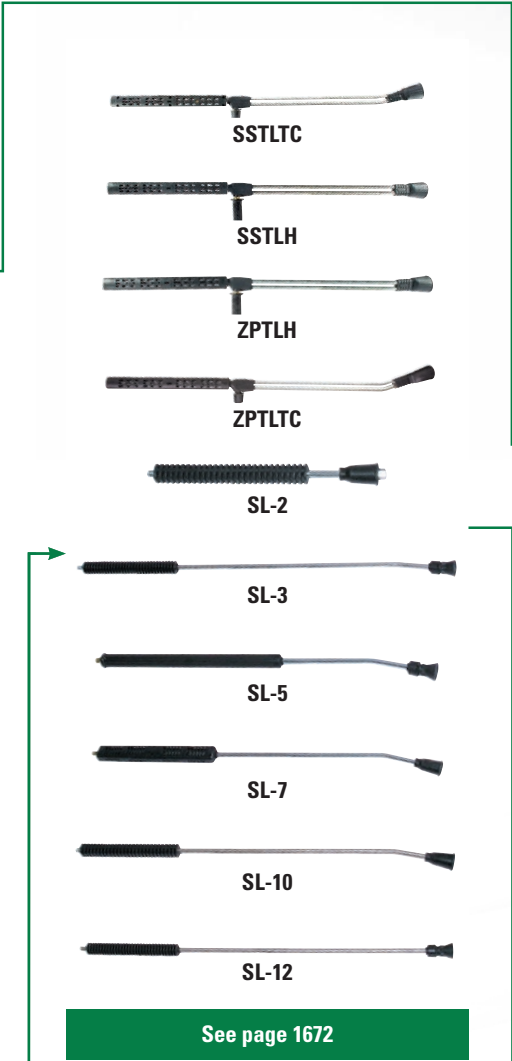
CDBU-42

CDBV-42

See page 1671

CDAZ

See page 1675



WASH DOWN EQUIPMENT



Pressure Wash Lance Triggers

Maximum Working Temperature: +150°C

Maximum Working Pressure: 280 bar



BSPP, 25 L/min

1369	Inlet Thread	Outlet Thread
ST900	3/8"	1/4"

Maximum Working Temperature: +150°C

Maximum Working Pressure: 280 bar



BSPP, 40 L/min, Soft Grip

1369	Inlet Thread	Outlet Thread
CDQ1500	3/8"	1/4"

Maximum Working Temperature: +150°C

Maximum Working Pressure: 310 bar



BSPP, 30 L/min, High Pressure

1369	Inlet Thread	Outlet Thread
ST-5	3/8"	1/4"

Maximum Working Temperature: +150°C

Maximum Working Pressure: 280 bar



BSPP, 25 L/min

1369	Inlet Thread	Outlet Thread
CDQ1900	3/8"	1/4"

Maximum Working Temperature: +150°C

Maximum Working Pressure: 345 bar



BSPP, 45 L/min, In-line

1369	Inlet Thread	Outlet Thread
CDQ2100	3/8"	1/4"

Maximum Working Temperature: +150°C

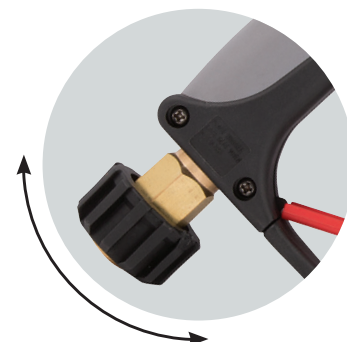
Maximum Working Pressure: 345 bar



BSPP, 45 L/min

1369	Inlet Thread	Outlet Thread
CDQ1600	3/8"	1/4"

Pressure Wash Lance Swivel Triggers



Maximum Working Temperature: +150°C

Maximum Working Pressure: 345 bar



Metric, 40 L/min

1369	Inlet Thread	Outlet Thread
ST-7	M22 x 1.5 Female	M22 x 1.5 Female

Maximum Working Temperature: +150°C

Maximum Working Pressure: 280 bar



BSPP, 25 L/min

1369	Inlet Thread	Outlet Thread
SW-ST4	3/8"	1/4"

Maximum Working Temperature: +150°C

Maximum Working Pressure: 280 bar



BSPP, 40 L/min

1369	Inlet Thread	Outlet Thread
SW-ST6	M22 x 1.5 Male	1/4"

Extended Lances, 1/4" BSPT Male Inlet/Outlet



Maximum Working Temperature:
+150°C
 Maximum Working Pressure:
280 bar

Straight Vented Grip, 30 L/min

1369	Length mm
BD-20	500
BD-25	635
BD-30	760
BD-36	900



Maximum Working Temperature:
+150°C
 Maximum Working Pressure:
280 bar

Angled Moulded Grip, 45 L/min

1369	Length mm
CDBJ-20	500
CDBJ-25	635
CDBJ-30	760
CDBJ-36	900

Extended Lances, 1/4" Male Inlet x M22 Female Outlet



Maximum Working Temperature:
+150°C
 Maximum Working Pressure:
250 bar

Straight Vented Grip, 80 L/min

1369	Length mm
BA-16	405
BA-18	457
BA-20	508



Maximum Working Temperature:
+150°C
 Maximum Working Pressure:
280 bar

Angled Vented Grip, 45 L/min

1369	Length mm
CDBB-20	500
CDBB-25	635
CDBB-30	760
CDBB-36	900



Maximum Working Temperature:
+150°C
 Maximum Working Pressure:
280 bar

Angled Twin Moulded Grip, 30 L/min

1369	Length mm
CDBU-42	1065
CDBU-47	1190
CDBU-50	1270



Maximum Working Temperature:
+150°C
 Maximum Working Pressure:
280 bar

Straight Moulded Grip, 45 L/min

1369	Length mm
BC-13	330
BC-15	380
BC-18	457
BC-20	508



Maximum Working Temperature:
+150°C
 Maximum Working Pressure:
280 bar

Straight Moulded Grip, 45 L/min

1369	Length mm
BMG-20	500
BMG-25	635
BMG-30	760
BMG-36	900



Maximum Working Temperature:
+150°C
 Maximum Working Pressure:
280 bar

Straight Twin Moulded Grip, 80 L/min

1369	Length mm
CDBV-42	1065
CDBV-47	1190
CDBV-50	1270

M22 Extension & Nozzle



Maximum Working Temperature:
+60°C
 Maximum Working Pressure:
150 bar

Adjustable M22 Male Extension, 25 L/min

1369	Length mm
CDBL-15	375

WASH DOWN EQUIPMENT



Twin Pressure Washer Lances

Maximum Working Temperature: +60°C
Maximum Working Pressure: 250 bar

Flow: 35 L/min

stainless steel



Stainless Steel Twin Lance with Top Control, BSPP

1369	Thread
SSTLTC	1/4"

Flow: 45 L/min

stainless steel



Stainless Steel Twin Lance with Handle, BSPP

1369	Thread
SSTLH	1/4"

Flow: 45 L/min



Zinc Plated Twin Lance with Handle, BSPP

1369	Thread
ZPTLH	1/4"

Flow: 45 L/min



Zinc Plated Twin Lance with Top Control, BSPP

1369	Thread
ZPTLTC	1/4"

Pressure Washer Lances

All supplied with 1/4" female thread nozzle holder and protector. 1/4" male thread inlet.

Maximum Working Temperature: +150°C
Maximum Working Pressure: 250 bar

Maximum Flow: 40 L/min

Straight with Moulded Grip Zinc Plated

1369	Length mm	No of Grips
SL-2	900	1



Bent End with Moulded Grip Zinc Plated

1369	Length mm	No of Grips
SL-3	900	1
SL-4	1200	2



Bent End with Hollow Grip Zinc Plated

1369	Length mm	No of Grips
SL-5	700	1



Bent End with Vented Grip Zinc Plated

1369	Length mm	No of Grips
SL-7	900	1
SL-8	900	2



stainless steel

Bent End with Moulded Grip Stainless Steel

1369	Length mm	No of Grips
SL-11	1200	1



stainless steel

Straight with Moulded Grip Stainless Steel

1369	Guard Type	Length mm	No of Grips
SL-13	Slide on	900	1

Heavy-duty Foam Injection Bottle

- Heavy-duty foam injection bottle connects easily to your existing pressure washer lance or gun.
- Foam bottle sprays foam all over the vehicle creating the "snow bath effect".
- 1/4" BSPP male inlet connection.
- 1 litre bottle.
- 1/4" x 1/4" adaptor removable for ease. Other adaptors can be fitted.
- Variable angle spray pattern nozzle.
- Adjustable detergent displacement.

Maximum Working Temperature: +60°C

Maximum Working Pressure: 275 bar



Male, BSPP

1369	Thread
FGB-1	1/4"

Pressure Washer Adaptors

Maximum Flow: 40 L/min

Maximum Working Temperature: +140°C

Maximum Working Pressure: 210 bar



BSPP Male x Female M22 x 1.5

1369	Thread
PWAB-14M	1/4"
PWAB-38M	3/8"
PWAB-12M	1/2"

Maximum Flow: 40 L/min

Maximum Working Temperature: +140°C

Maximum Working Pressure: 210 bar



BSPP Female x Male M22 x 1.5

1369	Thread
PWAA-14F	1/4"
PWAA-38F	3/8"
PWAA-12F	1/2"
PWAA-22F	M22 x 1.5

Maximum Working Temperature: +90°C

Maximum Working Pressure: 250 bar



Compact Swivel Coupling Brass, 3/8" BSPP

1369
21-049

Maximum Flow: 40 L/min

Maximum Working Temperature: +140°C

Maximum Working Pressure: 210 bar



BSPP Female x M22 x 1.5 Female

1369	Thread
PWAB-14F	1/4"
PWAB-38F	3/8"

Maximum Working Temperature: +150°C

Maximum Working Pressure: 280 bar



M22 x 1.5 Male

1369	Thread
PWAB-22MM	M22 x 1.5

Maximum Working Temperature: +150°C

Maximum Working Pressure: 280 bar



M22 x 1.5 Female

1369	Thread
PWAB-22FF	M22 x 1.5

Maximum Working Temperature: +130°C

Maximum Working Pressure: 250 bar



Brass Swivel Coupling Standard, BSPP

1369	Thread
21-051	1/4"
21-050	3/8"
21-052	1/2"

Maximum Working Temperature: +130°C

Maximum Working Pressure: 250 bar



stainless steel

Stainless Steel Swivel Coupling Standard, BSPP

1369	Thread
21-055	1/4"
21-056	3/8"
21-057	1/2"

Maximum Flow: 40 L/min

Maximum Working Temperature: +140°C

Maximum Working Pressure: 210 bar



BSPT Male x M22 x 1.5 Male

1369	Thread
PWAA-14M	1/4"
PWAA-38M	3/8"

Maximum Working Temperature: +130°C

Maximum Working Pressure: 250 bar



M22 x 1.5 Male Hose Coupling with Insulated Grip

1369	Thread
30-028	M22 x 1.5

Maximum Working Temperature: +130°C

Maximum Working Pressure: 250 bar



Foam Thickener

1369	Thread
26-0021	1/4"

High Pressure Spray Nozzles

Stainless steel, 1/4" male thread with a hardened steel insert for longer life and better accuracy, suitable for single and double lances.



Stainless Steel, 1/4" NPT Male

1369	Spray Pattern	LPM @ 50 Bar	LPM @ 100 Bar	LPM @ 150 Bar
2020-2982	0°	8	11.3	13.8
2020-2990	0°	8.7	12.4	15.2
2020-3014	0°	9.6	13.6	16.7
2020-3089	15°	8	11.3	13.8
2020-3105	15°	8.7	12.4	15.2
2020-3113	15°	9.6	13.6	16.7
2020-3139	25°	8	11.3	13.8
2020-3147	25°	8.7	12.4	15.2
2020-3154	25°	9.6	13.6	16.7
2020-3162	40°	8	11.3	13.8
2020-3188	40°	8.7	12.4	15.2
2020-3204	40°	9.6	13.6	16.7

Brass, 1/4" BSPT Male

1369
2021-8061



WASH DOWN EQUIPMENT



Rotating Head Nozzle

Flow: 45 L/min

Maximum Working Temperature: +90°C

Maximum Working Pressure: 345 bar

1/4" Female, BSPP

1369
9202L



Fixed Head Nozzle

Flow: 45 L/min

Maximum Working Temperature: +90°C

Maximum Working Pressure: 280 bar

1/4" Female, BSPP

1369
9203L



1/4" High Pressure Quick Release Nozzles



A Series Nozzles

1369	Spray Pattern	LPM @ 50 Bar	LPM @ 100 Bar	LPM @ 150 Bar	Colour
A00050	0°	8	11.3	13.8	Red
A00055	0°	8.7	12.4	15.2	Red
A00060	0°	9.6	13.6	16.7	Red
A15050	15°	8	11.3	13.8	Yellow
A15055	15°	8.7	12.4	15.2	Yellow
A15060	15°	9.6	13.6	16.7	Yellow
A25050	25°	8	11.3	13.8	Green
A25055	25°	8.7	12.4	15.2	Green
A25060	25°	9.6	13.6	16.7	Green
A40050	40°	8	11.3	13.8	White
A40055	40°	8.7	12.4	15.2	White
A40060	40°	9.6	13.6	16.7	White

Adjustable Pressure Nozzle

Flow: 25 L/min

Maximum Working Temperature: +60°C

Maximum Working Pressure: 200 bar

1/4" Female, BSPP

1369
CDQC-14



Fixed Jet Pressure Nozzle

Maximum Working Temperature: +90°C

Maximum Working Pressure: 385 bar

Sewer Drain Cleaning Head, 1 Forward 3 Rear, 1/4" Female, BSPP

1369	Nozzle	Flow @ 380 Bar
CDQP045-14	0.70mm-045	20 LPM
CDQP001-14	1.0mm-080	35 LPM



Drain Nozzles

Maximum Working Temperature: +95°C

Maximum Working Pressure: 385 bar

Fixed, BSPP

1369	Thread	Nozzle Dia mm
SJN-2-045	1/8"	0.7
SJN-2-050	1/8"	0.75
SJN-2-055	1/8"	0.8
SJN-4-045	1/4"	0.7
SJN-4-050	1/4"	0.75
SJN-4-055	1/4"	0.8
SJN-6-045	3/8"	0.7
SJN-6-050	3/8"	0.75
SJN-6-055	3/8"	0.8



Maximum Working Temperature: +95°C

Maximum Working Pressure: 280 bar

Rotating, BSPP

1369	Thread	Nozzle Dia mm
RSJN-2-045	1/8"	0.7
RSJN-2-050	1/8"	0.75
RSJN-2-055	1/8"	0.8
RSJN-4-045	1/4"	0.7
RSJN-4-050	1/4"	0.75
RSJN-4-055	1/4"	0.8
RSJN-6-045	3/8"	0.7
RSJN-6-050	3/8"	0.75



Nozzle Holders

Flow: 36 L/min

Maximum Working Temperature: +60°C

Maximum Working Pressure: 250 bar

Steel, 1/4" Female x 1/4" Female, BSPP

1369
CDH005



Flow: 36 L/min

Maximum Working Temperature: +90°C

Maximum Working Pressure: 250 bar

Steel, 1/4" Female x 1/4" Female, Adjustable with Protector, BSPP

1369
CDH004



Flow: 36 L/min

Maximum Working Temperature: +90°C

Maximum Working Pressure: 250 bar

Brass, 1/4" Female x 1/4" Female, BSPP

1369
CDH002



Flow: 36 L/min

Maximum Working Temperature: +90°C

Maximum Working Pressure: 250 bar

Brass, 1/4" Female x 1/4" Female, Adjustable with Protector, BSPP

1369
CDH006



Flow: 36 L/min

Maximum Working Temperature: +90°C

Maximum Working Pressure: 250 bar

Short Brass, 1/4" Female x 1/4" Female, BSPP

1369
CDH001



Pressure Wash Floor Cleaner

- 20"/500mm diameter
- 3/8" BSPP inlet
- Stainless steel construction
- 280 bar/4,000 psi maximum pressure
- 40 litres per minute at +100°C
- Maximum flow complete with 3 x 25° nozzles

🌡️ **Maximum Working Temperature:**
+100°C



20" Stainless Steel Floor Cleaning Tool

0363	Thread
PWFC-20	3/8"

Tools Adaptors



Lance M22 to CDL Adaptor

1369	Thread
CDE	M22



CDE to Tools Adaptor

1369	
CDL	

Cleaning Fluids

- PowerWash TFR is used in conjunction with mobile pressure washers, fixed arch moving gantries, and ultrasonic low pressure equipment.
- Specially designed for use in hot or cold pressure wash equipment.
- Highly economical to use and best results are obtained at very low concentration.



General Purpose Pressure Wash Detergent

0088	Volume Litres
59603-25	25

- Methanol free non-toxic concentrated screen wash designed for year round use.
- Leaves windscreens clean and smear free.



Screenwash

0088	Volume Litres
54027-25	25

Due to restrictions imposed by the Transport of Dangerous Goods Act, these products are available for delivery to MAINLAND UK ONLY. For further information please contact our customer service department.

Pressure Wash Accessories

🌡️ **Maximum Working Temperature:**
+100°C

🌀 **Maximum Working Pressure:**
190 bar



Spare Handle

1369
CDAZ



Hand Scrubbing Brush

1369
CDN



Rotating Scrubbing Brush

1369
CDM



Rotating Floor Scrubbing Brush

1369
CDO

WASH DOWN EQUIPMENT

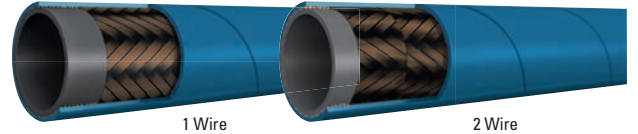


Blue Jet Wash Pressure Washer Hose



- Oil, abrasion, ozone and weather resistant synthetic pin-pricked rubber.
- High tensile 1 and 2 wire steel braid.

Working Temperature:
-40°C to +155°C



1 Wire, 10 Metre Coils

0303	ID	Max Pressure Bar
PWBLUE-04-10-R1	1/4"	225
PWBLUE-05-10-R1	5/16"	215
PWBLUE-06-10-R1	3/8"	180

Tech Sheet 3105

2 Wire, 10 Metre Coils

0303	ID	Max Pressure Bar
PWBLUE-06-10-R2	3/8"	330

Tech Sheet 3105

1 Wire, 25 Metre Coils

0303	ID	Max Pressure Bar
PWBLUE-04-25-R1	1/4"	225
PWBLUE-05-25-R1	5/16"	215
PWBLUE-06-25-R1	3/8"	180

Tech Sheet 3105

2 Wire, 100 Metre Coils

0303	ID	Max Pressure Bar
PWBLUE-04-100-R2	1/4"	400
PWBLUE-06-100-R2	3/8"	330

Tech Sheet 3105

2 Wire, Cut to Length, per Metre

1369	ID	Max Pressure Bar
2144-9681	1/4"	400
2144-9699	5/16"	350
2052-1423	3/8"	330

Tech Sheet 3105

Black Jet Wash Pressure Washer Hose



- Oil, abrasion, ozone and weather resistant synthetic pin-pricked rubber.
- High tensile 1 and 2 wire steel braid.

Working Temperature:
-40°C to +155°C



1 Wire, 10 Metre Coils

0303	ID	Max Pressure Bar
PWBLACK-04-10-R1	1/4"	225
PWBLACK-05-10-R1	5/16"	215
PWBLACK-06-10-R1	3/8"	180

Tech Sheet 3105

1 Wire, 100 Metre Coils

0303	ID	Max Pressure Bar
PWBLACK-04-100R1	1/4"	225

Tech Sheet 3105

1 Wire, Cut to Length, per Metre

1369	ID	Max Pressure Bar
2144-9657	1/4"	225
2144-9665	5/16"	215
2144-9673	3/8"	180

Tech Sheet 3105

1 Wire, 25 Metre Coils

0303	ID	Max Pressure Bar
PWBLACK-04-25-R1	1/4"	225
PWBLACK-05-25-R1	5/16"	215
PWBLACK-06-25-R1	3/8"	180

Tech Sheet 3105

2 Wire, 100 Metre Coils

0303	ID	Max Pressure Bar
PWBLACK-04-100R2	1/4"	400
PWBLACK-05-100R2	5/16"	350
PWBLACK-06-100R2	3/8"	330

Tech Sheet 3105

2 Wire, Cut to Length, per Metre

1369	ID	Max Pressure Bar
2144-9715	1/4"	400
2144-9723	5/16"	350
2144-9731	3/8"	330

Tech Sheet 3105

Blue Cold Water Pressure Wash Hose



Working Temperature:
-40°C to +100°C



1 Wire

2 Wire

1 Wire, 50 Metre Coils

0303	ID	Max Pressure Bar
CWBLUE04-50-R1	1/4"	190
CWBLUE05-50-R1	5/16"	175
CWBLUE06-50-R1	3/8"	157

Tech Sheet 10262

1 Wire, 25 Metre Coils

0303	ID	Max Pressure Bar
CWBLUE04-25-R1	1/4"	190
CWBLUE05-25-R1	5/16"	175
CWBLUE06-25-R1	3/8"	157

Tech Sheet 10262

2 Wire, 50 Metre Coils

0303	ID	Max Pressure Bar
CWBLUE04-50-R2	1/4"	350
CWBLUE05-50-R2	5/16"	297
CWBLUE06-50-R2	3/8"	280

Tech Sheet 10262

2 Wire, 25 Metre Coils

0303	ID	Max Pressure Bar
CWBLUE04-25-R2	1/4"	350
CWBLUE05-25-R2	5/16"	297
CWBLUE06-25-R2	3/8"	280

Tech Sheet 10262

Black Cold Water Pressure Wash Hose



Working Temperature:
-40°C to +100°C



1 Wire

2 Wire

1 Wire, 50 Metre Coils

0303	ID	Max Pressure Bar
CWBLACK04-50-R1	1/4"	190
CWBLACK05-50-R1	5/16"	175
CWBLACK06-50-R1	3/8"	157

Tech Sheet 10262

1 Wire, 25 Metre Coils

0303	ID	Max Pressure Bar
CWBLACK04-25-R1	1/4"	190
CWBLACK05-25-R1	5/16"	175
CWBLACK06-25-R1	3/8"	157

Tech Sheet 10262

2 Wire, 50 Metre Coils

0303	ID	Max Pressure Bar
CWBLACK04-50-R2	1/4"	350
CWBLACK05-50-R2	5/16"	297
CWBLACK06-50-R2	3/8"	280

Tech Sheet 10262

2 Wire, 25 Metre Coils

0303	ID	Max Pressure Bar
CWBLACK04-25-R2	1/4"	350
CWBLACK05-25-R2	5/16"	297
CWBLACK06-25-R2	3/8"	280

Tech Sheet 10262

WASH DOWN EQUIPMENT



Pressure Washer Hose Assemblies

- Oil and water resistant synthetic pin-pricked rubber.
- Special high temperature synthetic rubber cover.
- Blue suitable where non marking hose is required.
- Black suitable to handle pressure washer service.



1 Wire Braid 3/8" ID, 10 Metre Hose, 3/8" BSPP Male x Female

1369	ID	Max Pressure Bar	Colour
1PWLA-M-F-38N	3/8"	180	Black

1 Wire Braid 1/4" ID, 10 Metre Hose, 1/4" BSPP Female

1369	ID	Max Pressure Bar	Colour
1PWLA-14N	1/4"	225	Black

1 Wire Braid 3/8" ID, 10 Metre Hose, 3/8" BSPP Female

1369	ID	Max Pressure Bar	Colour
1PWLA-38B	3/8"	180	Blue
1PWLA-38N	3/8"	180	Black



2 Wire Braid 3/8" ID, 10 Metre Hose, 3/8" BSPP Female

1369	ID	Max Pressure Bar	Colour
2PWLA-38B	3/8"	330	Blue
2PWLA-38N	3/8"	330	Black

2 Wire Braid 3/8" ID, 10 Metre Hose, M22 x 1.5 x M22 x 1.5

1369	ID	Max Pressure Bar	Colour
2PWLA-K-K-38B	3/8"	330	Blue
2PWLA-K-K-38N	3/8"	330	Black

2 Wire Braid 3/8" ID, 10 Metre Hose, M22 x 1.5 x 3/8" BSPP Female

1369	ID	Max Pressure Bar	Colour
2PWLA-K-F-38B	3/8"	330	Blue
2PWLA-K-F-38N	3/8"	330	Black

2 Wire Braid 3/8" ID, 10 Metre Hose, M22 x 1.5 x 3/8" BSPP Male

1369	ID	Max Pressure Bar	Colour
2PWLA-K-M-38B	3/8"	330	Blue
2PWLA-K-M-38N	3/8"	330	Black

Bend Restrictor Assembly



Brass M22 x 1.5 Female, with Steel Tail & Ferrule

0300	To Suit Hose ID
M22-CUFF-4	1/4"
M22-CUFF-5	5/16"
M22-CUFF-6	3/8"

Jet Wash Female Hose Couplings



M22 x 1.5 Female Thread

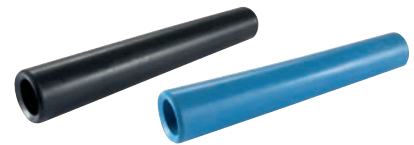
0300	To Suit Hose ID
JWF-22-04	1/4"
JWF-22-05	5/16"
JWF-22-06	3/8"

Stainless Steel, M22 x 1.5 Female Thread

0044	To Suit Hose ID
DKO-KA-DN06	1/4"
DKO-KA-DN08	5/16"
DKO-KA-DN10	3/8"
DKO-KA-DN12	1/2"

Tech Sheet 60627

End Cuff



Suitable for 1 & 2 Wire

0303	Colour	To Suit Hose ID
1/4-BLUE-CUFF	Blue	1/4"
1/4-BLACK-CUFF	Black	1/4"
3/8-BLUE-CUFF	Blue	3/8"
3/8-BLACK-CUFF	Black	3/8"

Jet Wash Male Hose Couplings



Male Adaptor

0300	To Suit Hose ID
JWM-04	1/4"
JWM-05	5/16"
JWM-06	3/8"

Spray Guns

9 spray patterns. Supplied with 1/2" quick connect male to 3/4" BSPP connector.



Spray Lance

0399	Size mm
TOOL-371756	770



Metal Spray Gun

0399
KA-03-94-76



Metal 6 Function Spray Gun

0399
KA-03-94-79

Metal Soft Rain Lance



0399	Length mm
KA-15-20-00	600
KA-15-20-09	900
KA-15-20-12	1200

Water Guns



Water Gun

1369
THWS010901

Spray Gun Display Packs

Display box of 50 plastic 1/2" male to 1/2" male quick connectors.



1/2" 2 Way Connector

0399	Quantity
TOOL-656601	50

Spray Gun Accessories

Solid brass 1/2" quick connect male to 3/4" BSPP.



Brass Internal Adaptor

0399
TOOL-244973

Solid brass 3/4" BSPP-1/2" quick connect male. 3/4" BSPP fits 1/2" outside tap.



Brass Tap Connector

0399
TOOL-598438

Solid brass 1/2" quick connect female to 1/2" compression. Auto stop.



Brass Quick Connector with Auto Stop

0399
TOOL-196506

Roses



Large Alloy Rose, BSPP

0399	Thread
KA-15-00-07F	3/4"

Water Nozzles



Brass Jet Nozzles

0399	ID
BJN12	1/2"
BJN34	3/4"
BJN1	1"

5 piece plastic hose fitting set 1 x 1/2" quick connect without water stop, 3/4" BSP tap connector and 100mm spray nozzle with infinite spray pattern.



4 Piece Hose Connector Set

0399
TOOL-394989

Solid brass 1/2" quick connect female to 1/2" compression without auto stop.



Brass Quick Connector without Auto Stop

0399
TOOL-868573

Solid brass 100mm spray nozzle, 2 x 1/2" quick connectors with water stop. 3/4" BSP tap adaptor fits 1/2" outdoor tap. Infinite spray patterns.



Brass Fitting Set

0399
TOOL-793753

SPRINKLERS



Sprinklers

Unique lower pressure sprinkler featuring butterfly type rotating spinner and rotary frame which provides even water distribution.



Pope Rotoframe Sprinkler, BSPP

0399	Thread	OD mm
KA-59-00-10	1/2"	4.5

Part circle brass sprinkler with fingertip adjustment for watering full 26m circle or any part of it. Baffle deflector controls height of jet and diameter of circle. Diffuser pin adjusts from heavy to fine stream.



Part Circle Metal Sprinkler, BSPP

0399	Thread	OD mm
KA-60-04-23-40	1/2"	4

Heavy-duty metal construction. Large part circle sprinkler with stainless steel springs and axle. Easy fingertip adjustment to any part of circle. 28m coverage.



Large Part Circle Metal Sprinkler, BSPP

0399	Thread	OD mm
KA-62-33-00	3/4"	3.9

Impulse sprinkler covers 360° diameter with full of half circle adjustable pattern. 1/2" quick connector. Daisy-chain facility.



Spike Sprinkler

0399	Type
TOOL-868552	1/2" Quick Connector

Sprinkler Stands

Made from coated steel complete with riser. Supplied complete with a quick coupling to connect to any Geka type fitting.



Metal Sled Base, BSPP

0399	Height mm	Thread
KA-68-25-05	300	1/2"

Porous Pipe

Used for various irrigation purposes. It should be used at pressures between 4-12 psi. The maximum run length is 50 metres and the output is 4 litres per hour per metre.



0399	Description
KA-92-10-30	30m Retail Pack Porous Pipe complete with 16mm Fittings
KA-92-15-50	50m Roll Porous Pipe

PRESSURE SPRAY EQUIPMENT



Pressure Sprayers

Mesto is a European market leading manufacturer of professional cleaning equipment and has been providing innovation for the industry since 1919.

Product description:

- Tank: Plastic, with filling scal
- Seals: FPM
- Nozzle: Plastic, adjustable

Applications:

- Construction work
- Cleaning industry
- Professional pest control
- Handicraft

Special features of the product:

- Safety valve



Maximum Working Temperature:
+30°C

Maximum Working Pressure:
3 bar

UNIVERSAL PLUS, Hand Pump Sprayer

0465	Capacity Litres	Material
3132PG	1.5	Polyethylene
Tech Sheet 60139		

Product description:

- Tank: Plastic with filling scal
- Seals FPM (Viton®)
- Nozzle: Plastic, adjustable
- Plastic jacket wand to protect the non-return valve

Applications:

- Foaming cleaning industry

Special features of the product:

- Safety valve
- Specially coated spring



Maximum Working Temperature:
+30°C

Maximum Working Pressure:
3 bar

FOAMER, Heavy-duty Hand Pump

0465	Capacity Litres	Material
3132FO	1.5	Polyethylene
Tech Sheet 60140		



Large selection of models for various application are available on request.

BEFORE USE, CHECK CAREFULLY WHETHER THE MATERIAL IS RESISTANT TO THE LIQUID BEING USED.

PRESSURE SPRAY EQUIPMENT



Compression Sprayers

Mesto is a European market leading manufacturer of professional cleaning equipment and has been providing innovation for the industry since 1919.

Device description:

- Tank: Plastic with large pressure reservoir
- Carried at the side
- Seals: FPM (Viton®)
- Nozzle: adjustable plastic nozzle
- Spray wand: Plastic, 48 cm, 360° rotatable
- Hose: 2.0 m, transparent oil resistant

Applications:

- Construction work
- Cleaning industry

Maximum Working Temperature:
+30°C

Maximum Working Pressure:
3 bar



FIX PLUS, Professional

0465	Capacity Litres	Material
3237FM	5	Polyethylene
Tech Sheet 60141		

Special features of the product:

- Professional pump
- Integrated dirt filter

Device description:

- Tank: Plastic, with large pressure reservoir
- Carried at the side
- Seals: FPM (Viton®)
- Nozzle: Plastic flat jet nozzle
- Spray wand: Plastic 48 cm, 360° rotatable
- Hose: 2.0 m
- Ergonomically formed shut-off valve with fine filter

Applications:

- Cleaning industry
- Vehicle cleaning
- Disinfection
- Corrosion protection
- Impregnation

Maximum Working Temperature:
+40°C

Maximum Working Pressure:
3 bar



CLEANER, Heavy-duty

0465	Capacity Litres	Material
3270PP	10	Polyethylene
Tech Sheet 60142		

Special features of the product:

- Professional pump with specially coated piston rod
- Large filling funnel
- With specially coated spring

Device description:

- Tank: Stainless steel
- Carried on the back – padded carrying straps
- Seals: FPM (Viton®)
- Nozzle: Brass flat jet nozzle with fine filter
- Spray wand: Brass 50cm, 360° rotatable
- Hose: Spiral hose 2.5 m with safety interlock

Applications:

- Construction work
- Cleaning industry
- Professional pest control

Maximum Working Temperature:
+50°C

Maximum Working Pressure:
6 bar



INOX PLUS, Stainless Steel

0465	Capacity Litres	Material
3615P	10	Stainless Steel
Tech Sheet 60143		

Applications:

- General purpose
- Gardening
- Horticulture
- Domestic cleaning
- Integrated safety valve and strap

Maximum Working Temperature:
+30°C

Maximum Working Pressure:
3 bar



GARANT, General Purpose

0465	Capacity Litres	Material
3195E	5	Polyethylene
Tech Sheet 60144		

Large selection of models for various application are available on request.

BEFORE USE, CHECK CAREFULLY WHETHER THE MATERIAL IS RESISTANT TO THE LIQUID BEING USED.

PRESSURE SPRAYERS

Manual



5 Litre Pressure Sprayer

0088
TOOL-675108



8 Litre Pressure Sprayer

0088
TOOL-868593



10 Litre Pressure Sprayer

0088
TOOL-630070



20 Litre Backpack

0088
TOOL-633595

COMMERCIAL & DOMESTIC VEHICLE CLEANING EQUIPMENT

Vehicle Brushes

The shape design gives more cleaning productivity, as the brush is in constant contact with the surface, when used as either a waterfed or a dip brush.



Hi-Lo Waterfed Brush

0143	Description
VIK-524752	Rubber Edged

Effective all surface water-fed bodywork brush for large areas, up to 3 metres in height.



Bodywork Brushes

0143	Width mm	Description
VIK-475552	250	Rubber Edged
VIK-475752	400	-

Brush for cleaning wheel rims on trucks and buses.



Wheel Brush

0143	Width mm
VIK-545252	230



Hand Waterfed Brushes

0143	Length mm
VIK-525452	350

Vehicle Brush Handles

Handles to suit all vehicle brushes.

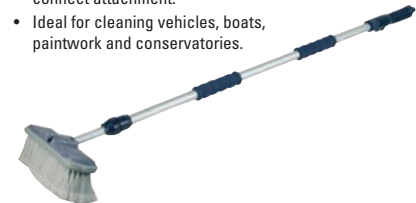


Vehicle Brush Handles

0143	Length Metres	Description
VIK-299152	1.5	Waterfed Handle
VIK-297352	1.5-2.75	Telescopic Waterfed Handle
VIK-297552	1.5-2.75	Telescopic Handle

Cleaning Brushes

- Features on/off water control and quick connect attachment.
- Ideal for cleaning vehicles, boats, paintwork and conservatories.



Telescopic Car Cleaning Brush

0088	Length mm
TOOL-719788	1070-1760

PUMPS & PROCESS EQUIPMENT



Air Operated Double Diaphragm Pumps

Typical Applications:

- OEMs
- Printing
- Wastewater
- Plating/surface finishin

Typical Fluids Handled:

- Waterborne materials, some HHC's
- Paints, coatings, inks and dyes
- Car wash chemicals
- Laundry chemicals and detergents
- Chemicals

Features:

- 1/4" (6.35 mm) end-porting
- Low-cost, compact design
- Spring check valves for superior priming in any mounting configuratio
- True-formed PTFE and Santoprene diaphragms for enhanced performance
- Can also be remotely-controlled using an external controller
- Delivery up to 5 gpm (18.93 L/min)



Husky 205, BSPP

0074	Body	Balls	Diaphragms
D11021	Acetal	Acetal	PTFE
D12096	Polypropylene	Polypropylene	Santoprene

Typical Applications:

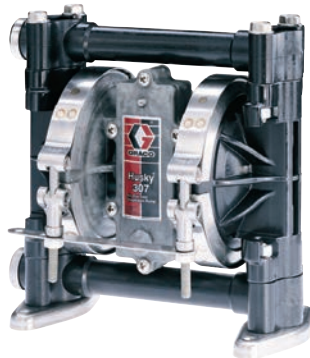
- Drum transfer for fluids up to 1000 centipoise
- Circulation of low viscosity inks, stains and dyes
- Coolant circulation and evacuation
- Waste fluid removal
- On-demand batch chemical metering
- Low viscosity adhesive supply
- Consistent low pressure air spray or HVLP supply

Typical Fluids Handled:

- Paints
- Lubricants
- Inks
- Stains
- Solvents
- Coatings
- Dyes

Features:

- 3/8" (9.52 mm) end porting
- Fully-groundable acetal model
- Operates on as little as 20 psi (1.4 bar, 0.14 MPa) air pressure
- Delivery up to 7 gpm (26.5 L/min)
- Easy-to-service air valve and ball checks
- Quiet operation – 75 dBA at 50 psi (3.5 bar, 0.35 MPa) and 60 cpm



Husky 307, BSPP

0074	Body	Seats	Balls	Diaphragms
D3A211	Acetal	Acetal	PTFE	PTFE
D3B911	Polypropylene	Polypropylene	PTFE	PTFE
D3B955	Polypropylene	Polypropylene	Hytrel	Hytrel
D3A255	Acetal	Acetal	Hytrel	Hytrel

Typical Applications:

- Machine lube servicing
- Drum evacuation
- Plating and dip tanks
- Water treatment

Typical Fluids Handled:

- Cleaning fluids and detergent
- Chemicals
- Ceramic glazes
- Inks
- Solvents and flammable
- Acids and bases

Features:

- 1/2" (12.7 mm) centre-porting and 3/4 in. (19.05 mm) end-porting
- Quiet running – less than 85 dBA with easy-to-use remote muffler capability for even lower noise levels
- No seals to leak or fail
- High flow rates in a small, portable packag
- Can also be remotely-controlled using an external controller
- Delivery up to 15 gpm (56.88 L/min)



Husky 515, BSPP

0074	Body	Seats	Balls	Diaphragms
D5B911	Polypropylene	Polypropylene	PTFE	PTFE
D5A211	Acetal	Acetal	PTFE	PTFE
D5A277	Acetal	Acetal	Buna	Buna

Tech Sheet 10288

Typical Applications:

- Machine lube servicing
- Cleaning fluids and detergent
- Plating and dip tanks
- Water treatment

Typical Fluids Handled:

- Oil
- Water
- Most solvents

Features:

- 3/4" (19.05 mm) centre and end-porting
- Quiet running – less than 85 dBA with easy-to-use remote muffler capability for even lower noise levels
- High flow rates in a small, portable packag
- No seals to leak or fail
- Can also be remotely-controlled using an external controller
- Delivery up to 16 gpm (60.87 L/min)



Husky 716, BSPP

0074	Body	Seats	Balls	Diaphragms
D5C277	Aluminium	Acetal	Buna-N	Buna-N
D5D311	Stainless	Stainless	PTFE	PTFE

Tech Sheet 10288

Air Operated Double Diaphragm Pumps

Typical Applications:

- Drum fluid transfe
- Unloading fluid
- Bilge pumping
- Chemical evacuation
- Dewatering and sump evacuation
- Tank and sump drainage

Typical Fluids Handled:

- Chemicals
- Contaminated surface water
- Adhesives, varnishes, dispersions, solvents and stains
- Resins, latexes, wood preservative stains, concrete and primers

Features:

- 1" (25.4 mm) ANSI end-porting
- High flow – 50 gpm (189 L/min) in a compact, portable size
- Fluid pressure to 120 psi (8.6 bar, 0.86 MPa)
- E-coated centre section for corrosive environments
- Equipped with an effective and reliable air valve system
- Can also be remotely-controlled using an external controller



Husky 1050, BSPP

0074	Body	Seats	Balls	Diaphragms
647121	Aluminium	Geolast	Geolast	Geolast
647109	Aluminium	Stainless	PTFE	PTFE

Typical Applications:

- Filter press
- Tank stripping
- Bilge pumping
- Sand and ball mill pumping
- Oil transfer and oil skimming
- Chemical plating

Typical Fluids Handled:

- Latex
- Corrosive fluid
- Acids: hydrochloric, ferric, sulfuric, nitric and phosphoric
- Slurries: petroleum, lime, clay, ferrite, salt/brine and pumice
- Sludge: secondary and clarifie
- Pottery slip

Features:

- 1.1/2" (38.1 mm) ANSI end-porting
- High flow – 100 gpm (378 L/min) in a compact, portable size
- Fluid pressure to 120 psi (8.4 bar, 0.84 MPa)
- Lube-free operation
- Patented, high-reliability "closed centre" air valve is "online" serviceable
- Epoxy-coated air section for tough environmental conditions
- Can also be remotely-controlled using an external controller



Husky 1590, BSPP

0074	Body	Seats	Balls	Diaphragms
DBC666	Aluminium	Geolast	Geolast	Geolast
DBD311	Stainless	Stainless	PTFE	PTFE
DB2911	Polypropylene	Polypropylene	PTFE	PTFE

Typical Applications:

- Drum fluid transfe
- Bulk fluid suppl
- Chemical evacuation
- Ground water and sump evacuation
- Waste fluid remova
- Tank and bilge drainage
- Slurry and sludge transfer
- Filter press feed

Typical Fluids Handled:

- Acids, alkalies, solvents, suspensions, dispersions, electroplating baths, paints, varnishes, resins, latex, adhesives, effluent sludge and stabiliser
- Ship cleaning and stripping chemicals

Features:

- 2" (50.8 mm) ANSI end-porting
- Larger ports for more flow – up to 150 gpm (568 L/min)
- Fluid pressure to 120 psi (8.4 bar, 0.84 MPa)
- Lube-free operation
- Patented, high-reliability "closed centre" air valve is "online" serviceable
- Epoxy-coated air section for tough environmental conditions
- Can also be remotely-controlled using an external controller



Husky 2150, BSPP

0074	Body	Seats	Balls	Diaphragms
DFC666	Aluminium	Geolast	Geolast	Geolast
DFC666	Aluminium	Santoprene	Santoprene	Santoprene
DF2911	Polypropylene	Polypropylene	PTFE	PTFE

Typical Applications:

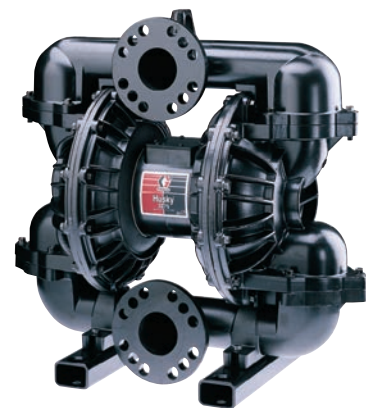
- Chemical transfers
- Filter press-feed
- Dewatering

Typical Fluids Handled

- Chemicals
- Bulk paint resins
- Ceramic slip

Features:

- 3" (76.2 mm) ANSI centre porting
- Bolted leak-free flanged connections – no clamp bands used
- Easy air valve maintenance
- Large flow paths can handle high viscosities
- Heavy-duty construction
- Fluid flow up to 275 gpm (1040 L/min)



Husky 3275, BSPP

0074	Body	Seats	Balls	Diaphragms
652021	Aluminium	Stainless	PTFE	PTFE

Fogco Environmental is a recognised industry leading manufacturer of high quality misting equipment for residential, commercial and industrial markets.



Pump Kits

See page 1687



Pumps

See page 1689



Fans

See page 1690



Air Injection Dry Fog System

See page 1691



Slip Lok Push-in Fittings

See page 1692



Nozzles

See page 1693



Adaptors

See page 1694



Filters

See page 1695



Controllers

See page 1696

Direct Drive Kit

This kit range includes a 1,000 psi Fogco direct drive misting pump with either a flexible nylon, pre-fabricated copper or stainless steel tubing mist line, a filter assembly with water supply connections, plus all of the necessary fittings and components to complete a mist system installation for the listed lengths. These Fogco misting kits include a direct drive 230V mist pump and a standard brass and stainless steel misting nozzle with 24" spacing.

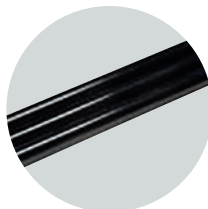


Key:

LPM: Litres per minute
 HP: Horse power
 FLA: Full load amperage

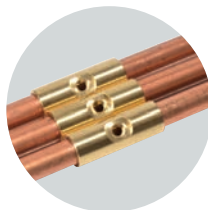
With Nylon Tube

9583	Tube Length Feet	No. of Nozzles	Total LPM	Pump Specification			Direct Pump Ref. no
				LPM	HP	FLA	
8N20215	20	10	0.76	0.8	1	7.1	8100215
8N30215	30	15	1.14	1.6	1	7.1	8200215
8N40215	40	20	1.52	1.6	1	7.1	8200215
8N50215	50	25	1.9	3.5	1	7.1	8300215
8N60215	60	30	2.28	3.5	1	7.1	8300215
8N70215	70	35	2.66	3.5	1	7.1	8300215
8N80215	80	40	3.04	3.5	1	7.1	8300215
8N90215	90	45	3.42	3.5	1	7.1	8300215



With Copper Tube

9583	Tube Length Feet	No. of Nozzles	Total LPM	Pump Specification			Direct Pump Ref. no
				LPM	HP	FLA	
8C20215	20	10	0.76	0.8	1	7.1	8100215
8C30215	30	15	1.14	1.6	1	7.1	8200215
8C40215	40	20	1.52	1.6	1	7.1	8200215
8C50215	50	25	1.9	3.5	1	7.1	8300215
8C60215	60	30	2.28	3.5	1	7.1	8300215
8C70215	70	35	2.66	3.5	1	7.1	8300215
8C80215	80	40	3.04	3.5	1	7.1	8300215
8C90215	90	45	3.42	3.5	1	7.1	8300215



With Stainless Steel Tube

9583	Tube Length Feet	No. of Nozzles	Total LPM	Pump Specification			Direct Pump Ref. no
				LPM	HP	FLA	
8S20215	20	10	0.76	0.8	1	7.1	8100215
8S30215	30	15	1.14	1.6	1	7.1	8200215
8S40215	40	20	1.52	1.6	1	7.1	8200215
8S50215	50	25	1.9	3.5	1	7.1	8300215
8S60215	60	30	2.28	3.5	1	7.1	8300215
8S70215	70	35	2.66	3.5	1	7.1	8300215
8S80215	80	40	3.04	3.5	1	7.1	8300215
8S90215	90	45	3.42	3.5	1	7.1	8300215



Direct Delivery to Mainland UK only. All include a 2-3 day delivery charge for Mainland UK.
 For Next Day Delivery, please contact our sales office for a quote.

MISTING SYSTEMS - PUMP KITS



Pulley Drive Kit

This kit range includes a 1,000 psi Fogco pulley drive misting pump with either a flexible nylon, copper or stainless steel tubing mist line, a filter assembly with water supply connections, plus all of the necessary fittings and components to complete a mist system installation for the listed lengths. These Fogco misting kits include our pulley drive 230V mist pump and our standard brass and stainless steel misting nozzle with 24" spacing.

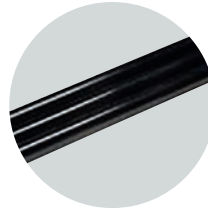


Key:

LPM: Litres per minute
 HP: Horse power
 FLA: Full load amperage

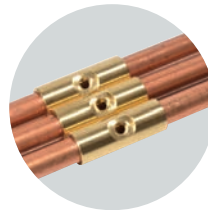
With Nylon Tube

9583	Tube Length Feet	No. of Nozzles	Total LPM	Pump Specification			Pulley Pump Ref. no
				LPM	HP	FLA	
7N20215	20	10	0.76	1	1	7.1	7100215
7N30215	30	15	1.14	2	1	7.1	7200215
7N40215	40	20	1.52	2	1	7.1	7200215
7N50215	50	25	1.9	4	1	7.1	7400215
7N60215	60	30	2.28	4	1	7.1	7400215
7N70215	70	35	2.66	4	1	7.1	7400215
7N80215	80	40	3.04	4	1	7.1	7400215
7N90215	90	45	3.42	4	1	7.1	7400215



With Copper Tube

9583	Tube Length Feet	No. of Nozzles	Total LPM	Pump Specification			Pulley Pump Ref. no
				LPM	HP	FLA	
7C20215	20	10	0.76	1	1	7.1	7100215
7C30215	30	15	1.14	2	1	7.1	7200215
7C40215	40	20	1.52	4	1	7.1	7200215
7C50215	50	25	1.9	4	1	7.1	7400215
7C60215	60	30	2.28	4	1	7.1	7400215
7C70215	70	35	2.66	4	1	7.1	7400215
7C80215	80	40	3.04	4	1	7.1	7400215
7C90215	90	45	3.42	4	1	7.1	7400215



With Stainless Steel Tube

9583	Tube Length Feet	No. of Nozzles	Total LPM	Pump Specification			Pulley Pump Ref. no
				LPM	HP	FLA	
7S20215	20	10	0.76	1	1	7.1	7100215
7S30215	30	15	1.14	2	1	7.1	7200215
7S40215	40	20	1.52	4	1	7.1	7200215
7S50215	50	25	1.9	4	1	7.1	7400215
7S60215	60	30	2.28	4	1	7.1	7400215
7S70215	70	35	2.66	4	1	7.1	7400215
7S80215	80	40	3.04	4	1	7.1	7400215
7S90215	90	45	3.42	4	1	7.1	7400215



Direct Delivery to Mainland UK only. All include a 2-3 day delivery charge for Mainland UK. For Next Day Delivery, please contact our sales office for a quote.

Direct Drive Pump

The 50Hz direct drive mist pump range are medium duty outdoor rated units, designed to operate at 70 bar for 8 hours per day, seven days a week under normal operating conditions. This range is ideal for light to medium duty mist applications. These pumps provide quality components in a small and convenient platform.

This mist pump range is available in 230V and includes:

- Direct drive pump
- On/off switch
- Inlet solenoid
- Adjustable regulator with bypass thermal relief valve
- Glycerine filled pressure gaug
- Rubber isolation feet
- Filter assembly

Key:

LPM: Litres per minute
 HP: Horse power
 FLA: Full load amperage



230V/50Hz

9583	Description			Weight Kg	Dimensions cm		
	LPM	HP	FLA		L	W	H
8100215	0.8	1	7.1	27.7	59.7	31.8	26.7
8200215	1.6	1	7.1	27.7	59.7	31.8	26.7
8300215	3.5	1	7.1	27.7	58.4	31.8	26.7
8400215	4.4	1	7.1	27.7	58.4	31.8	26.7
8700215	6.6	1.5	11.3	29.9	58.4	37.8	26.7

Pulley Driven Pump

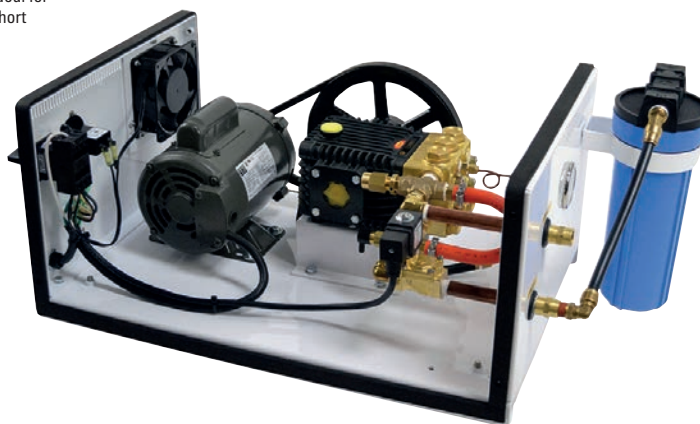
The 50Hz pulley drive mist pumps are industrial duty outdoor rated units, designed to operate at 70 bar for 24/7 use, under normal operating conditions. This range is ideal for industrial and commercial applications that includes UL compliant thermal and short circuit protection, as well as a low water pressure cut-off switch.

This mist pump range is available in 230V and includes:

- Pulley drive pump
- Exhaust fan
- Panel mount switch
- Inlet solenoid
- Adjustable regulator with bypass thermal relief valve
- Hour meter
- Glycerine filled pressure gaug
- Rubber isolation feet
- Filter assembly

Key:

LPM: Litres per minute
 HP: Horse power
 FLA: Full load amperage
 RPM: Revs per minute



230V/50Hz

9583	Description				Weight Kg	Dimensions cm		
	LPM	HP	FLA	RPM		L	W	H
7100215	1	1	7.1	770	49.9	66.0	30.5	40.6
7200215	2	1	7.1	598	49.9	66.0	30.5	40.6
7400215	4	1	7.1	486	49.9	66.0	30.5	40.6
7800215	8	1.5	11.3	973	53.5	66.0	30.5	40.6
7120215	12	3	13	1450	59.0	66.0	30.5	40.6



Direct Delivery to Mainland UK only. All include a 2-3 day delivery charge for Mainland UK. For Next Day Delivery, please contact our sales office for a quote.

MISTING SYSTEMS - FANS



Revolution

The **Revolution** misting fan provides improved evaporative cooling and humidification, compared to traditional misting fans. Its unique design allows a more uniform distribution of the fog and improved absorption of the moisture.

By integrating a focused horizontal air stream into the fog, the water droplets can cover more surface area. This allows the mist system to cool or humidify up to 5 times the amount of air, compared to static line misting systems. This mist fan can cover up to 3,600 sq.ft. or 36,000 cu.ft.

This misting fan is available in 230V and uses 0.8 amps. The unit includes a stainless steel fog ring with 10 nozzle fittings



230V Ceiling Mount Fan

9583	Fan Specification		Weight Kg	Dimensions cm		
	HP	FLA		L	W	H
93820	0.25	0.9	18.1	61.0	61.0	25.4

Revolution II

The **Revolution II** misting fan is a smaller version of the **Revolution** and provides improved evaporative cooling and humidification. Its unique design allows a more uniform distribution of the fog and improved absorption of the moisture.

Similar to the **Revolution**, integrating a focused horizontal air stream into the fog, the water droplets can cover more surface area. This allows the mist system to cool or humidify up to 5 times the amount of air compared to static line misting systems. This mist fan can cover up to 900 sq.ft. or 9,000 cu.ft.

This misting fan provides 250 cfm and is available in 230V and uses 0.12 amps. The unit includes 10ft of 18 gauge insulated power cord, 10ft of flexible high pressure feed line and a rustproof treated and powder coated housing with a 6 nozzle stainless steel fog ring. Custom fog rings are also available.



Ceiling Mount Fan

9583	Fan Specification		Weight Kg	Dimensions cm		
	HP	FLA		L	W	H
94820	0.25	0.12	2.0	30.5	30.5	8.9

Key:

HP : Horse power
FLA : Full load amperage



Direct Delivery to Mainland UK only. All include a 2-3 day delivery charge for Mainland UK. For Next Day Delivery, please contact our sales office for a quote.



Evolution Mini

The **Evolution Mini** does not include the cannon shaped housing, so it requires a shorter distance for the absorption of the fog compared to the projection that is capable with the standard **Evolution**.

Because of this characteristic, the **Evolution Mini** is well suited for low ceilings and restricted or confined applications. Due to the reduced noise level and low profile design, this fan can be used in an office or warehouse environment

The **Evolution Mini** uses a single misting nozzle but multiple nozzle configurations are also available, if increased moisture is required.

The **Evolution Mini** requires a 6 Watt 12V DC power supply. Once the unit is wall mounted, with the provided bracket, it can be adjusted both horizontally and vertically.

The power supply includes a DIN rail and is designed to be mounted in a cabinet or enclosure.



12V DC Wall Mount Fan

9583	Weight Kg	Dimensions cm		
		L	W	H
93000-12VDC	2.7	24.1	20.3	20.3

MISTING SYSTEMS - AIR INJECTION DRY FOG SYSTEM



The Fogco Air Injection Dry Fog System utilises the proprietary control box, capable of producing over 150 lbs of dry fog per hour. It includes the FOGCOntroller II microprocessor.

The box allows on-site adjustments to the system performance and output. The Drip Free air injection nozzles prevent dripping when the system shuts down and to prevent the water supply from running if there is a loss of air pressure.

The air injection nozzles are capable of producing flow rates from 8 lbs/hr to 16 lbs/hr while providing droplets as small as 1 micron and achieving humidity levels up to 99%. The Fogco Air Injection System requires the availability of compressed air of at least 80 psi and 25 cfm and water pressure of 60 psi to produce the maximum output of 150 lbs/hr.

The system utilises directionally adjustable dry fog nozzles on a magnetic base or hung using an 3/8" mount.



Air Injection Control Box



Includes FOGCOntroller II Microprocessor

9583	Weight Kg	Dimensions cm		
96100	13.6	L	W	H
		30.5	30.5	25.4

Drip Free Adjustable Air Nozzle



With All-Thread Mount

9583	Flow
96081	8lbs/hr - 16lbs/hr



With Magnetic Base

9583	Flow
96080	8lbs/hr - 16lbs/hr

FO-500 ULTRA-LOW VOLUME FOGGER



- Disinfection
- Pest Control
- Odour Control
- Plant Protection



ULV Fogger 240V

9584
FO-500



Direct Delivery to Mainland UK only. All include a 2-3 day delivery charge for Mainland UK. For Next Day Delivery, please contact our sales office for a quote.

MISTING SYSTEMS - AIR INJECTION DRY FOG SYSTEM



The Fogco line of industrial Slip Lok fittings are rated at 1,500 psi and have been used successfully in industrial applications for over 20 years.

The fittings include a heavy-duty bod , thicker locking ferrule and an over sized viton o-ring. Their unique design allows them to be easily removed, replaced or re-installed anytime after the initial installation. No special tools or crimping procedures are required.

- Standard threads are 10/24 UNC.



Male Stud



Male Thread, NPT x Tube

9583	Tube OD	Thread
94853	1/4"	1/4"
92707	3/8"	3/8"

Mistscaping Adaptor



Tube x UNC

9583	Tube OD	Thread
92923	3/8"	10/24

Equal Elbow



Tube x Tube

9583	Tube OD
92703	3/8"

Mistscaping Equal Joiner



Tube x UNC

9583	Tube OD	Thread
94630	1/4"	10/24
92630	3/8"	10/24

Joiners



Tube x Tube

9583	Tube OD
92702	3/8"

Equal Cross



Tube x Tube

9583	Tube OD
92711	3/8"

End Plug



Tube

9583	Material	Tube OD
94706	Plastic	1/4"
92706	Brass	3/8"

Standard Mist Nozzle

These misting nozzles are available in brass with stainless steel orifices. The sizes range from 0.008" to 0.020" with flow rates from 0.020 gpm to 0.055 gpm

- Spray patterns vary from 60° to 90°.
- Standard threads are 10/24 UNC.
- All stainless steel and 12/24 UNC are available on request.



Brass

9583	Orifice Size Inches	LPM	Spray Pattern	O-Ring Colour	Weight g	Dimensions cm		
						L	W	H
93508	0.008	0.76	60°	Red	9.1	2.5	1.0	1.0
93512	0.012	0.110	70°	Black	9.1	2.5	1.0	1.0
80450	0.016	0.167	80°	Brown	9.1	2.5	1.0	1.0
93520	0.020	0.208	90°	Green	9.1	2.5	1.0	1.0

Cleanable Anti-drip Nozzle

All cleanable misting nozzles include an anti-drip adaptor. This range is available in brass with a stainless steel orifice or all stainless steel design. The sizes range from 0.006" to 0.020" with flow rate from 0.01 gpm to 0.045 gpm.

- Spray patterns from 45° to 85°.
- Larger orifice sizes and different threads are also available as special order items.
- Standard threads are 10/24 UNC.
- All stainless steel and 12/24 UNC are available on request.



Brass

9583	Orifice Size Inches	LPM	Spray Pattern	O-Ring Colour	Weight g	Dimensions cm		
						L	W	H
95031	0.006	0.037	45°	Yellow	9.1	2.5	1.0	1.0
95037	0.008	0.060	55°	Red	9.1	2.5	1.0	1.0
95038	0.012	0.095	65°	Black	9.1	2.5	1.0	1.0
95039	0.016	0.136	75°	Brown	9.1	2.5	1.0	1.0
95040	0.020	0.170	85°	Green	9.1	2.5	1.0	1.0

Stainless Steel

9583	Orifice Size Inches	LPM	Spray Pattern	O-Ring Colour	Weight g	Dimensions cm		
						L	W	H
95032	0.006	0.037	45°	Brown	9.1	2.5	1.0	1.0
95033	0.008	0.060	55°	Brown	9.1	2.5	1.0	1.0
95034	0.012	0.095	65°	Brown	9.1	2.5	1.0	1.0
95035	0.016	0.136	75°	Brown	9.1	2.5	1.0	1.0
95036	0.020	0.170	85°	Brown	9.1	2.5	1.0	1.0

For Knee Protection
...see page 1759

MISTING SYSTEMS - ADAPTORS



The nozzle adaptor range includes extensions, clusters and adaptors to provide more options in the designing and installation of a mist system. Clusters allow 3 or 5 nozzles to be placed in a single nozzle fitting. Extensions allow the fog to be directed in a specific wa , while extending the fog up to 12 inches from the line.

Nozzle Extensions



Stainless Steel, UNC

9583	Nozzle Length Inches	Male Thread	Female Thread
94506	6	10/24	10/24
94512	12	10/24	10/24

Nozzle Cluster



Stainless Steel, UNC

9583	Male Thread	Female Thread
93019	10/24	5 x 10/24

Nozzle Swivel Adaptor



Nickel-plated, UNC

9583	Male Thread	Female Thread
95041	10/24	10/24

Nozzle Adaptor



Brass

9583	Male Thread	Female Thread
92519	1/8" NPT	10/24 UNC

Nozzle Plug



Brass, UNC

9583	Male Thread
93505	10/24

Nozzle Removal Tool



Plastic

9583
92100

Nozzle O-Rings



Plastic

9583	Material
10252	Nitrile
93598	Viton

Replacement Spring



For Cleanable Anti-drip Nozzle

9583
92788

Replacement Stemmed Ball



For Cleanable Anti-drip Nozzle

9583
93354



For Eye Protection
...see page 1754

MISTING SYSTEMS - FILTERS



Filtration is highly recommended for every mist system. Fogco offer a full range of filter cartridges and housing. From their smallest 'hose end' calcium inhibitor filter to the larger 10" filter housing with varying micron cartridges

Fogco's filter range also includes a special phosphate cartridge for the 10" filter housing. This cartridge helps eliminate the adverse effects of calcium and dissolved solids present in the water supply.

For very high flow rates, Fogco offers an increased capacity filtration option that includes a larger housing and a dual stage cartridge. This filter housing include 1" ports for maximum flow .

Water Pretreatment Kit



With Cartridges

9583	Type
93613	Polyphosphate
93614	Scalex

10" Filter Housing



1" Ports, High Flow

9583
92611

10" Blue Slimline Filter Housing



1/2" Ports

9583
92609

10" Dual Filter Cartridge



For 92611

9583	Pre-filter Micron μ m	Filter Micron μ m	GPM
92612	25	1	30

Filter Cartridges



Particle Removal Filter

9583	Micron μ m
92603	1
92608	2



Limescale/Corrosion Inhibiting Filter

9583	Type
93039	Polyphosphate
92613	Scalex

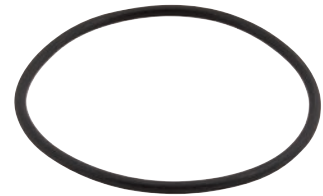
Mounting Bracket



For 92609

9583
95022

Replacement O-Ring



For 92609

9583
95024

MISTING SYSTEMS - CONTROLLERS



FOGController

The FOGController is a 2 zone 24V AC microprocessor that accepts input from two separate sensors. The controller has 5 independent programmable relays that can control a series of fans, zone valves, and pumps.

The controller also includes a programmable time delay NC contact that can be used to terminate all output signals from the controller if a defined condition develops with the system.

The humidity settings range from 30% to 99% with a hysteresis range between 1 and 9. The temperature settings range from 70° to 99° with a hysteresis range between 1 and 9. The standard sensor will have an accuracy of +/- 2% from 10% to 70% humidity. It is recommended that the high humidity sensor be used for applications requiring humidity levels above 70%.

- The controller requires a 50 Watt 24V AC transformer as a power supply.



2 Zone Microprocessor

9583	Weight g	Dimensions cm		
		L	W	H
92910	454	15.2	8.9	5.7

FOGController II

The FOGController II is a humidity controller, with an internal humidity sensor that provides automated operation of a fog system. The unit can operate based on its internal sensor or it can be wired to an external sensor for high humidity applications.

The humidity settings range from 10% to 99% with a hysteresis range between 1 and 5. It is recommended to use the external sensor for humidity levels above 50% and our high humidity sensor for humidity levels above 70%.

The FOGController II is a single zone microprocessor and has two output relays with a programmable delay start and stop.

The internal and external sensors are fully calibrated re-flow humidity sensors with digital output that send binary data over RS485 protocol. The sensor will have an accuracy of +/- 2%.

- The controller requires a 50 Watt 24V AC transformer as a power supply.



Single Zone Microprocessor

9583	Weight g	Dimensions cm		
		L	W	H
94160	182	14	7.6	2.5

Sensor



For High Humidity

9583	Detection Range	Weight g	Dimensions cm		
			L	W	H
92906	0 to 99%	137	10.2	10.2	2.5

Remote Sensor



For Temperature/Humidity

9583	Detection Range	Weight g	Dimensions cm		
			L	W	H
92909	0 to 70%	91	10.2	5.1	2.5

4 Pin Connector



To Suit FOGController & FOGController II

9583	Weight g	L	Dimensions cm	
			W	H
92908	10	2.5	2.5	2.5



Direct Delivery to Mainland UK only. All include a 2-3 day delivery charge for Mainland UK. For Next Day Delivery, please contact our sales office for a quote.