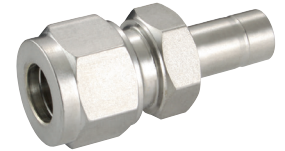
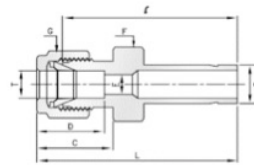


# 316 Stainless Steel Twin Ferrule Metric Tube Fittings



## Reducers

### Tube x Tube



Part No	T mm	T1mm	E MIN	F mm	G mm	D	C	I	L
R-3-4	3	4	2.4	12	12	12.9	15.3	28.4	35.0
R-3-6	3	6	2.4	12	12	12.9	15.3	29.5	36.1
R-4-6	3	10	2.4	12	12	12.9	15.3	31.8	38.4
R-6-3	4	6	2.4	12	12	13.7	16.1	30.5	37.1
R-6-8	6	3	1.8	14	14	15.3	17.7	29.5	36.9
R-6-10	6	8	4.8	14	14	15.3	17.7	32.5	39.9
R-6-12	6	10	4.8	14	14	15.3	17.7	33.3	40.7
R-6-18	6	12	4.8	14	14	15.3	17.7	28.9	46.3
R-8-6	8	6	4.6	15	16	16.2	18.6	32.8	40.3
R-8-10	8	10	6.4	15	16	16.2	18.6	34.5	42.0
R-8-12	8	12	6.4	15	16	16.2	18.6	40.1	47.6
R-10-6	10	6	4.6	18	19	17.2	19.5	34.8	42.4
R-10-12	10	12	7.9	18	19	17.2	19.5	42.2	49.8
R-10-15	10	15	7.9	18	19	17.2	19.5	43.7	51.3
R-10-18	10	18	7.9	19	19	17.2	19.5	43.7	51.3
R-12-6	12	6	4.6	22	22	22.8	22.0	34.8	44.9
R-12-10	12	10	7.7	22	22	22.8	22.0	36.6	46.7
R-12-16	12	16	9.5	22	22	22.8	22.0	43.7	53.8
R-12-18	12	18	9.5	22	22	22.8	22.0	43.7	53.8
R-12-20	12	20	9.5	22	22	22.8	22.0	46.0	56.1
R-12-22	12	22	9.5	24	22	22.8	22.0	46.0	56.1
R-12-25	12	25	9.5	27	22	22.8	22.0	52.3	62.4
R-16-12	16	12	9.1	24	25	24.4	22.0	42.9	53.0
R-18-12	18	12	9.1	27	30	24.4	22.0	44.5	54.6
R-18-16	18	16	12.7	27	30	24.4	22	46	56.1
R-18-20	18	20	15.1	27	30	24.4	22	47.5	57.6
R-18-22	18	22	15.1	27	30	24.4	22	47.5	57.6
R-18-25	18	25	15.1	27	30	24.4	22	52.3	62.4
R-20-16	20	16	12.7	30	32	24.4	22	47.8	57.9
R-20-18	20	18	13.9	30	32	26	22	47.8	57.9
R-20-22	20	22	15.8	30	32	26	22	49.3	59.4
R-20-25	20	25	15.8	30	32	26	22	54.1	64.2
R-22-18	22	18	13.9	30	32	26	22	47.8	57.9
R-22-20	22	20	15.1	30	32	26	22	49.3	59.4
R-22-25	22	25	18.3	30	32	26	22	54.1	64.2
R-25-18	25	18	13.9	35	38	31.3	26.5	50.8	63.1
R-25-20	25	20	15.1	35	38	31.3	26.5	52.3	64.6