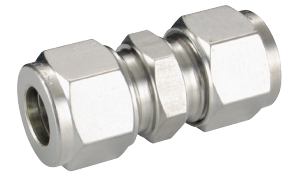
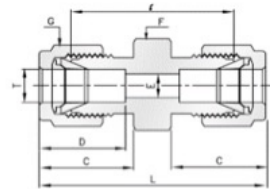


# 316 Stainless Steel Twin Ferrule Metric Tube Fittings



## Unions

### Tube x Tube



Part No	T mm	E mm	F	G	D	C	I	L
U-3	3	2.4	12	12	12.9	15.3	22.1	35.3
U-4	4	2.4	12	12	13.7	16.1	24.1	37.3
U-6	6	4.8	14	14	15.3	17.7	26.2	41
U-8	8	6.4	15	16	16.2	18.6	28.2	43.2
U-10	10	7.9	18	19	17.2	19.5	31	46.2
U-12	12	9.5	22	22	22.8	22	31	51.2
U-15	15	11.9	24	25	24.4	22	31.8	52
U-20-FT	20	15.9	30	32	26	22	34.8	55
U-22	22	18.3	30	32	26	22	34.8	55
U-25	25	21.8	35	38	31.3	26.5	40.4	65