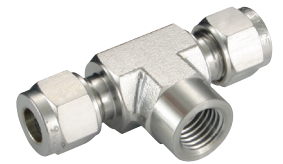
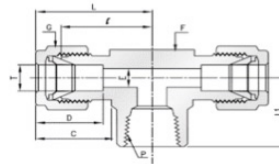


# 316 Stainless Steel Twin Ferrule Metric Tube Fittings



## Female Branch Tees

### Female Thread, NPT



Part No	T mm	P (NPT)	E MIN	F	G	D	C	I	L	L1
FBT-6-125N	6	1/8	4.8	12.70	14	15.3	17.7	19.6	27.0	19.0
FBT-6-250N	6	1/4	4.8	17.46	14	15.3	17.7	22.4	29.8	22.4
FBT-8-125N	8	1/8	6.4	15.87	16	16.2	18.6	23.1	29.9	19.0
FBT-8-250N	8	1/4	6.4	17.46	16	16.2	18.6	23.1	30.6	22.4
FBT-10-250N	10	1/4	7.9	20.63	19	17.2	19.5	25.9	33.5	22.4
FBT-12-250N	12	1/4	9.5	20.63	22	22.8	22.0	25.9	36.0	22.4
FBT-12-375N	12	3/8	9.5	20.63	22	22.8	22.0	25.9	36.0	22.4
FBT-16-500N	16	1/2	12.7	25.4	25	24.4	22.0	28.7	38.8	28.7