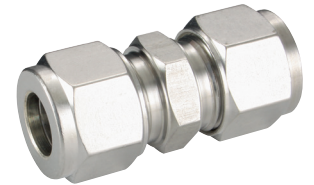
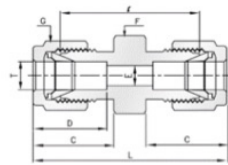


316 Stainless Steel Twin Ferrule Imperial Tube Fittings



Unions

Tube x Tube



Part No.	Tube O.D. T in	E Min	F	G	D	C	I	L
U-125	1/8	2.28	7.16	7.16	12.70	15.24	22.36	35.56
U-187	3/16	3.04	7/16	1/2	13.71	16.00	24.13	37.33
U-250	1/4	4.82	1/2	9/16	15.24	17.78	26.16	40.89
U-312	5/16	6.35	9/16	5/8	16.25	18.54	28.19	42.92
U-375	3/8	7.11	5/8	11/16	16.76	19.30	30.22	44.95
U-500	1/2	10.41	13/16	7/8	22.86	21.84	30.98	51.30
U-625	5/8	12.70	15/16	1	24.38	21.84	31.75	52.07
U-750	3/4	15.74	1-1/16	1-1/8	24.38	21.84	33.27	53.59
U-875	7/8	18.28	1-3/16	1-1/4	25.90	21.84	35.05	55.37
U-1000	1	22.35	1-3/8	1-1/2	31.24	26.41	40.38	64.77