

SILENZIATORI E DOSATORI DI SCARICO
SILENCERS AND EXHAUST FLOW REGULATORS
SCHALLDAMPFER UND EINSCHRAUB-DROSSEL
SILENCIEUX ET DOSEURS D'EVACUATION

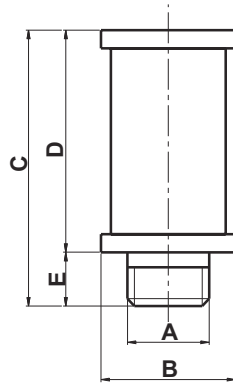
SLS - SLD
100 - 101

Questi SILENZIATORI sono particolarmente indicati per installazioni su soffianti e generatori di vuoto, sia in aspirazione che in compressione. Corpo esterno in acciaio, elemento interno fonoassorbente in poliuretano a celle parzialmente chiuse. Per particolari applicazioni si eseguono trattamenti termici sulle parti in metallo.

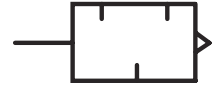
The silencers are indicated for application on blower and vacuum booster, either in aspiration and compression. External body is steel made, the inside sound absorbing cartridge is in polyurethane resin with partially closed cells. Thermal treatment on the metal parts are made only for special applications.



TRONCHETTO SINGOLO
SINGLE THREADED JOINT



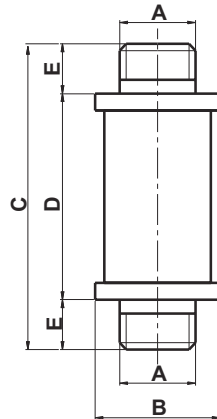
Silenziatori
Silencers
Schalldampfer
Silencieux



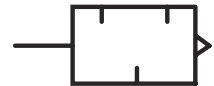
Codice Code	A	B	C	D	E
SLS050	G 1/2	50	115	100	15
SLS075	G 3/4	50	120	100	20
SLS100	G 1	69	158	138	20
SLS125	G 1 1/4	69	190	138	52
SLS150	G 1 1/2	80	200	168	32
SLS200	G 2	89	230	198	32
SLS250	G 2 1/2	100	230	198	32
SLS300	G 3	152	390	350	40
SLS400	G 4	152	440	400	40



TRONCHETTO DOPPIO
DOUBLE THREADED JOINT



Silenziatori
Silencers
Schalldampfer
Silencieux



Codice Code	A	B	C	D	E
SLD050	G 1/2	50	130	100	15
SLD075	G 3/4	50	140	100	20
SLD100	G 1	69	178	138	20
SLD125	G 1 1/4	69	242	138	52
SLD150	G 1 1/2	80	232	168	32
SLD200	G 2	89	262	198	32
SLD250	G 2 1/2	100	262	198	32
SLD300	G 3	152	430	350	40
SLD400	G 4	152	480	400	40