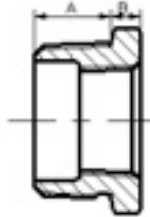
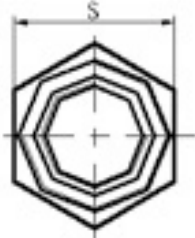


Malleable Iron Fittings

Male x Female Reducing Bush (241)



Size		Dimensions (mm)		
Inch	mm	A	B	S
1/4X1/8	8X6	11.2	3.6	16.3
3/8X1/8	10X6	12.2	4.3	17.3
3/8X1/4	10X8	12.2	4.1	17.3
1/2X1/8	15X6	14.2	4.8	22.1
1/2X1/4	15X8	14.2	4.8	22.1
1/2X3/8	15X10	14.2	4.8	22.1
3/4X1/8	20X6	16	5.6	29.2
3/4X1/4	20X8	16	5.6	29.2
3/4X3/8	20X10	16	5.6	29.2
3/4X1/2	20X15	16	5.6	29.2
1X1/8	25X6	21	7	35
1X3/8	25X10	21	7	35
1X1/2	25X15	19.1	6.4	36.1
1X3/4	25X20	19.1	6.4	36.1
1 1/4X1/4	32X8	24	8	45
1 1/4X3/8	32X10	24	8	45
1 1/4X1/2	32X15	24	8	45
1 1/4X3/4	32X20	20.3	7.1	44.7
1 1/4X1	32X25	20.3	7.1	44.7
1 1/2X1/4	40X8	24	8	49
1 1/2X3/8	40X10	24	8	49
1 1/2X1/2	40X15	22	9	50
1 1/2X3/4	40X20	22	9	50
1 1/2X1	40X25	21.1	7.9	50.8
1 1/2X1 1/4	40X32	21.1	7.9	50.8
2X1/8	50X8	26	9	64
2X3/8	50X10	26	9	64
2X1/2	50X15	28	11	63.2
2X3/4	50X20	26.5	11	63.2
2X1	50X25	26	9	63.2
2X1 1/4	50X32	22.4	8.6	63
2X1 1/2	50X40	22.4	8.6	63
2 1/2X1 1/2	65X40	29	11	79
2 1/2X1/2	65X15	29	11	80
2 1/2X3/4	65X20	29	11	80
2 1/2X1	65X25	30	12	80
2 1/2X1 1/4	65X32	32	12	80
2 1/2X2	65X50	29	11	79
3X1/2	80X15	32	12	94
3X3/4	80X20	32	12	94
3X1	80X25	35	13	95
3X1 1/4	80X32	35	13	95
3X1 1/2	80X40	35	13	95
3X2	80X50	28.7	12.2	83.3
3X2 1/2	80X65	32	12	94
3 1/2X3	90X80	31	12	118.1
4X3/4	100X20	37	14	121
4X1	100X25	37	14	121
4X1 1/4	100X32	37	14	121
4X1 1/2	100X40	37	14	121
4X2	100X50	36	15	120
4X2 1/2	100X65	41	15	120
4X3	100X80	31	12.7	117.3
4X3 1/2	100X90	31	12.7	132.1
5X3	125X80	46	13	145
5X4	125X100	33.3	12.7	147.1
6X2	150X50	40	29	172.8
6X2 1/2	150X65	40	29	172.8
6X3	150X80	40	29	172.8
6X4	150X100	40	29	172.8
6X5	150X125	35.6	16	179.1