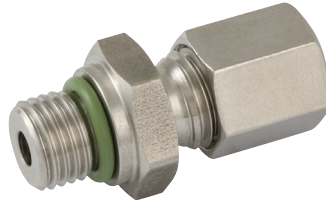
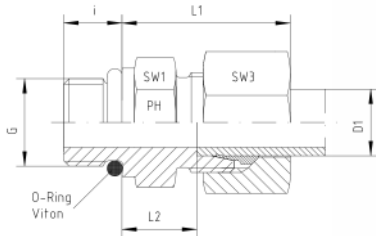


# 316 Stainless Steel DIN 2353 Tube Fittings



## Male Stud Couplings



**Stainless Steel 1.4571 Temperature Range:**  
-60°C to +400°C (DIN 17 440, AD W 10)

**Seal Temperature Range:**  
-20°C to +200°C (FPM eg Viton)

### Male Stud Couplings

L-Series

Thread: UNF (ASA B 1.1 -1960)

Sealing by O-ring in Thread Undercut - SAE J 514

**Note: A special part shape must be machined.**

Other jump sizes on request!

Series	Pressure PN	Tube O.D. D1	Thread G	Approx. Dimensions					O-ring	Order-Code Standard
				L1	L2	i	SW1	SW3		
L	315	6	7/16"-20 UNF	23,5	9,0	9,2	17	14	8,92 x 1,83	GE-L-06-7/16"-UNF
L	315	6	1/2"-20 UNF		10,0	9,2	17	14	10,52 x 1,83	GE-L-06-1/2"-UNF
L	315	6	9/16"-18 UNF			10,0	19	14	11,90 x 1,98	GE-L-06-9/16"-UNF
L	315	8	7/16"-20 UNF	25,0	10,0	9,2	17	17	8,92 x 1,83	GE-L-08-7/16"-UNF
L	315	8	1/2"-20 UNF	25,0	10,0	9,2	17	17	10,52 x 1,83	GE-L-08-1/2"-UNF
L	315	8	9/16"-18 UNF	25,0	10,0	10,0	19	17	11,90 x 1,98	GE-L-08-9/16"-UNF
L	315	10	7/16"-20 UNF	26,0	11,0	9,2	17	19	8,92 x 1,83	GE-L-10-7/16"-UNF
L	315	10	1/2"-20 UNF	26,0	11,0	9,2	17	19	10,52 x 1,83	GE-L-10-1/2"-UNF
L	315	10	9/16"-18 UNF	26,0	11,0	10,0	19	19	11,90 x 1,98	GE-L-10-9/16"-UNF
L	315	10	3/4"-16 UNF	30,5	13,0	11,2	24	19	16,36 x 2,20	GE-L-10-3/4"-UNF
L	315	12	9/16"-18 UNF	26,0	12,5	10,0	19	22	11,90 x 1,98	GE-L-12-9/16"-UNF
L	315	12	3/4"-16 UNF	27,0	12,5	11,2	24	22	16,36 x 2,20	GE-L-12-3/4"-UNF
L	315	12	7/8"-14 UNF	27,5	13,5	12,7	27	22	19,18 x 2,46	GE-L-12-7/8"-UNF
L	315	15	9/16"-18 UNF	29,0	14,0	10,0	24	27	11,90 x 1,98	GE-L-15-9/16"-UNF
L	315	15	3/4"-16 UNF	29,0	14,0	11,2	24	27	16,36 x 2,20	GE-L-15-3/4"-UNF
L	315	15	7/8"-14 UNF	29,0	14,0	12,7	27	27	19,18 x 2,46	GE-L-15-7/8"-UNF
L	315	18	3/4"-16 UNF	31,0	14,5	11,2	27	32	16,36 x 2,20	GE-L-18-3/4"-UNF
L	315	18	7/8"-14 UNF	31,0	14,5	12,7	27	32	19,18 x 2,46	GE-L-18-7/8"-UNF
L	315	18	1 1/16"-12 UN	31,0	14,5	15,0	32	32	23,47 x 2,95	GE-L-18-1 1/16"-UN
L	160	22	3/4"-16 UNF	33,0	16,5	11,2	32	36	16,36 x 2,20	GE-L-22-3/4"-UNF
L	160	22	7/8"-14 UNF	33,0	16,5	12,7	32	36	19,18 x 2,46	GE-L-22-7/8"-UNF
L	160	22	1 1/16"-12 UN	33,0	16,5	15,0	32	36	23,47 x 2,95	GE-L-22-1 1/16"-UN
L	160	22	1 5/16"-12 UN	33,0	16,5	15,0	41	36	29,74 x 2,95	GE-L-22-1 5/16"-UN
L	160	28	7/8"-14 UNF	34,0	17,5	12,7	41	41	19,18 x 2,46	GE-L-28-7/8"-UNF
L	160	28	1 1/16"-12 UN	34,0	17,5	15,0	41	41	23,47 x 2,95	GE-L-28-1 1/16"-UN
L	160	28	1 5/16"-12 UN	34,0	17,5	15,0	41	41	29,74 x 2,95	GE-L-28-1 5/16"-UN
L	160	28	1 5/8"-12 UN	34,0	17,5	15,0	50	41	37,46 x 3,00	GE-L-28-1 5/8"-UN
L	160	35	1 1/16"-12 UN	39,0	17,5	15,0	46	50	23,47 x 2,95	GE-L-35-1 1/16"-UN
L	160	35	1 5/16"-12 UN	39,0	17,5	15,0	46	50	29,74 x 2,95	GE-L-35-1 5/16"-UN
L	160	35	1 5/8"-12 UN	39,0	17,5	15,0	50	50	37,46 x 3,00	GE-L-35-1 5/8"-UN
L	160	42	1 5/8"-12 UN	42,0	19,0	15,0	55	60	37,46 x 3,00	GE-L-42-1 5/8"-UN
L	160	42	1 7/8"-12 UN	42,0	19,0	15,0	55	60	43,69 x 3,00	GE-L-42-1 7/8"-UN