

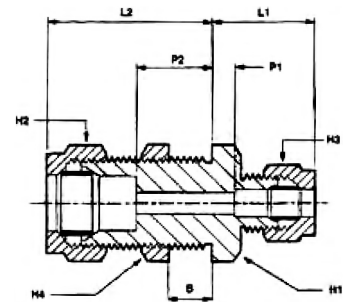
Unequal Bulkhead Coupling, Imperial

Wade



Features & Benefits

- In-line configuration
- Enables connection of two tubes of different outside diameter
- Designed to connect tubes on either side of a bulkhead panel
- Provided with a simple locknut mechanism the fitting can be secured and locked in place through the panel



Part No	Tube OD	Tube OD	L1 Length	L2 Length	H1 & H2 Hex A/F	H3 Hex A/F	H4 Hex A/F	P1 Abutment	P2 Abutment	B Max Bulkhead	Bulkhead Hole Dia
WADE-4043/0/L6	1/4"	1/8"	0.656"	1.125"	0.601"	0.445"	0.71"	0.187"	0.562"	3/8"	0.531"
WADE-4045/3/L3	5/16"	1/4"	0.781"	0.937"	0.601"	0.601"	0.71"	0.218"	0.375"	3/16"	0.531"