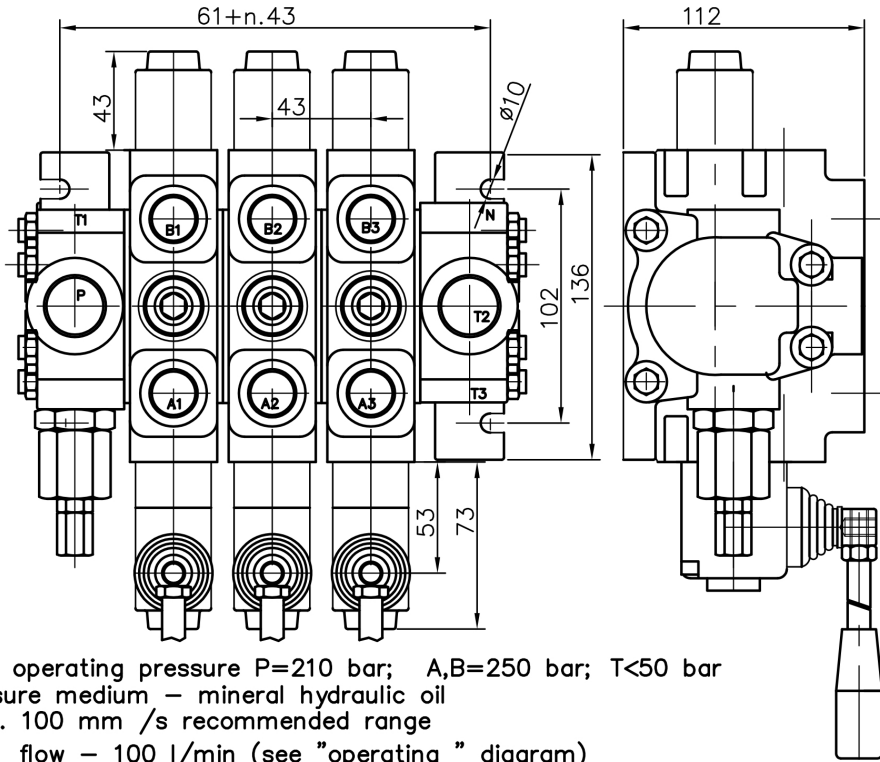


# Directional Control Valves PC 100



max. operating pressure P=210 bar; A,B=250 bar; T<50 bar  
 pressure medium – mineral hydraulic oil  
 20 ... 100 mm /s recommended range  
 max flow – 100 l/min (see "operating " diagram)  
 nominal flow – 80 l/min (see "operating " diagram)  
 n – number of sections – max 8

Order code

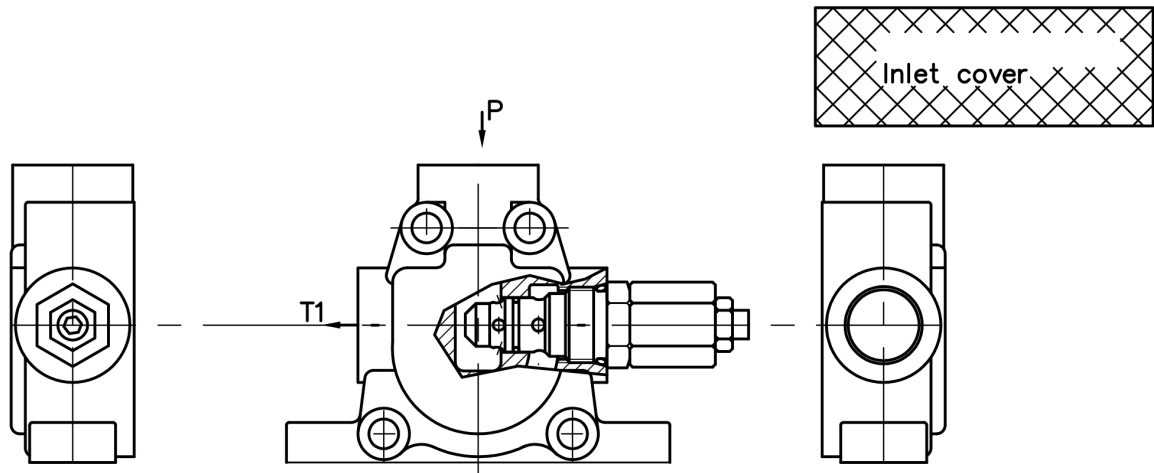
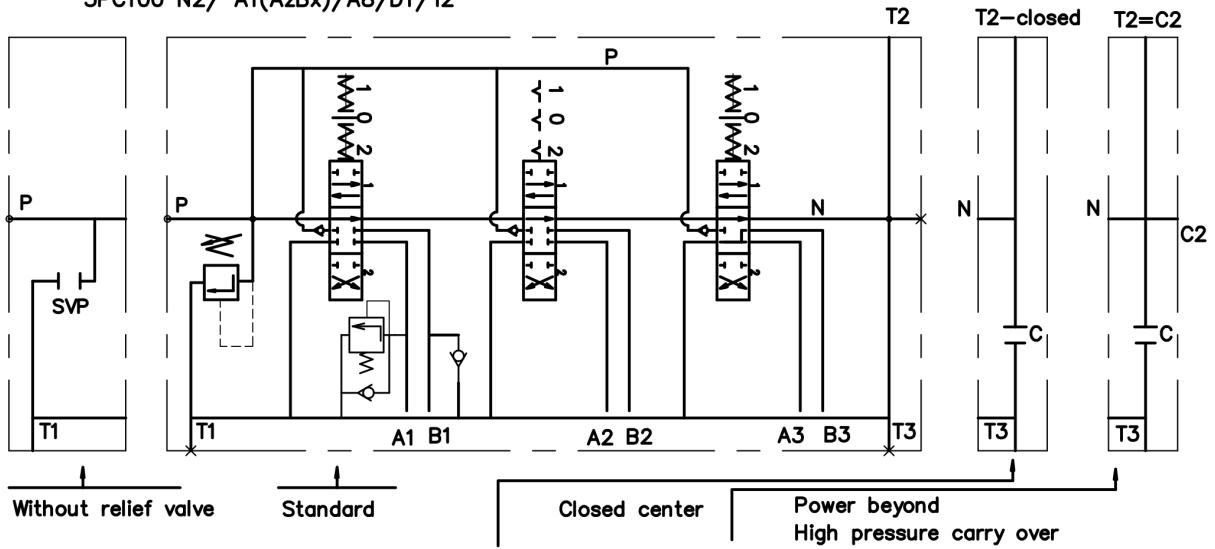
3 PC 100 R N2 /A1(AzBx)/ A8/ D1/ T2 / G KZ1 P E C2

number of spools	3
directional control valve	PC 100
inlet high pressure – right	R
type of the inlet cover	N2
first spool distribution type	/A1(AzBx)/
second spool distribution type	A8/
third spool distribution	D1/
type of the outlet cover (T port)	T2 /
threads (P, A, B, T, N)	G
lever options	KZ1
operation feature	P
with microswitch	E
high pressure carry over	C2

\* All detent in operating positions, provided with hydraulic control, have to be ordered explanative.

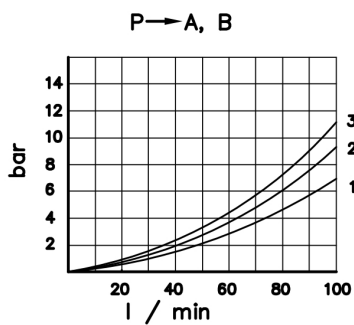
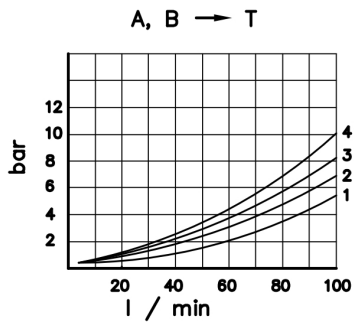
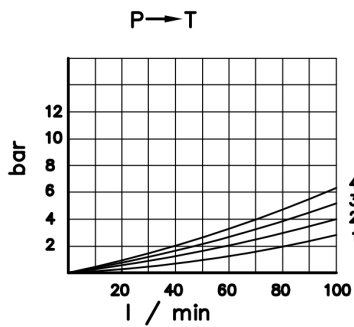
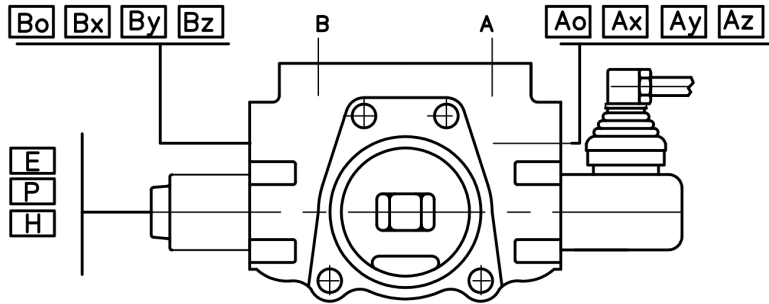
Directional control valve PC 100

parallel circuit  
3PC100 N2/ A1(AzBx)/A8/D1/T2



code	inlet cover	
N1	N1 (210 bar)	
N1svp		
N2	N2 (210 bar)	
N2svp		

# Directional control valve PC 100



operating diagrams

code std	code met	spool type
A	As	
B	Bs	
C	Cs	
D	Ds	
E	Es	
F	Fs	
G		
H		

code	spool control		
1		1	0 2
2		1	0 2
3		1	0 2
4		0	2
5		1	0
6		1	2
7		1	2
8		1	0 2
9		1	0
10		0	2
11		1	2

code	threads			code	threads		
	P, T	A, B	carry over C2		P, T	A, B	carry over C2
G1	G 3/4	G 1/2	G 3/4	S1	SAE 12	SAE 10	SAE 12
G2	G 3/4	G 3/4	G 3/4	S2	SAE 12	SAE 12	SAE 12

code	with electric switch	
E		mikroswitch Omron - V 165 I C5

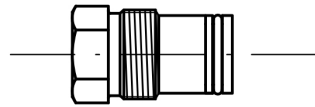
code	operation feature	
P		pneumatic pn = 6 bar NPTF 1/8-27
H		гидравлическое hydraulic pn = 6 - 20 bar G 1/4

Ao	Bo	plug for A and/or B (without mark)
Ax	Bx	anti cavitation valve for A and/or B
Ay	By	secondary pressure relief valve for A and/or B
Az	Bz	shockabsorber valve for A and/or B

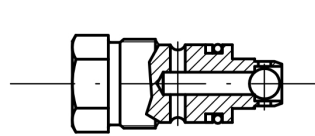
# Directional control valve PC 100

## second valves

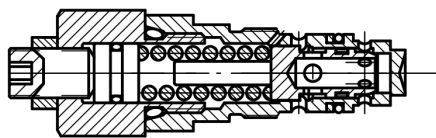
plug "o"



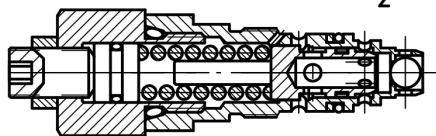
anticavitation valve "x"



second relief valve "y"



combined part relief and anticavitation valve "z"

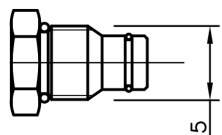


## general operation feature

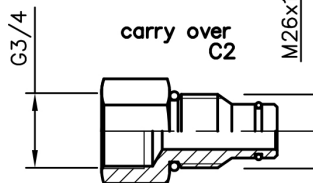
code	feature	code	feature	code	feature
KZ		KY		KI	
KZ1		KY1		KI1	
KZ0		KY0		KI0	
KZ01		KY01		KI01	
- без система управления / without lever system					



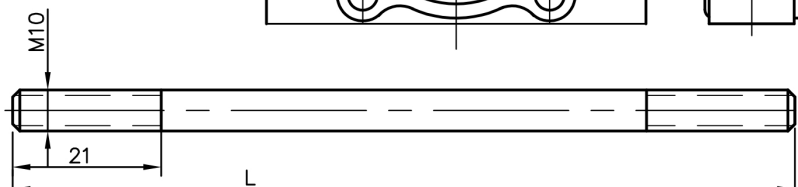
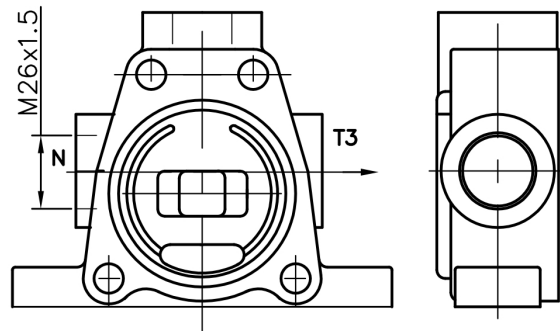
closed center  
C



carry over  
C2



T2  
or  
(T2=C2) high pressure carry over



\*"C" in the port N—+plug in T2—closed center  
 \*\*"C" in the port N—carry over in T2  
 \*\*\*"C2"+Plug in the T2— carry over in N

number of spools	1	2	3	4	5	6	7	8
L	145	188	230	275	320	360	405	445