

Hydraulic Selector Valve Type P81

Nordvalves
hydraulic components



Description

For starting, controlling and stopping the working fluid between the generator of pressured flow, the consumers and the Tank. The valve is provided with hydraulic controlled fixing of the spool. When the set up pressure is reached, the fixing of the spool fall away and the spool release to neutral.

Specifications

1. Valve monoblock

2. Mounting

3 bolts M8

3. Pressure connections

internal thread

4. Ambient temperature

-40C...+60C

5. Pressure medium

mineral oil based hydraulic oil

6. Viskosity

12...800 mm²/s permissible range
20...100 mm²/s recommended range

7. Fluid temperature

- 15C...+80C

8. Filtration

Oil contamination 10 to NAS1638

9. Max. operating pressure

P = 250 bar

T = 50 bar

A, B = 300 bar

70-140 bar

the pressure is set up for automatical release of the spool

10. Leakage

20 cm³/min at 120 bar

11. Nominal flow

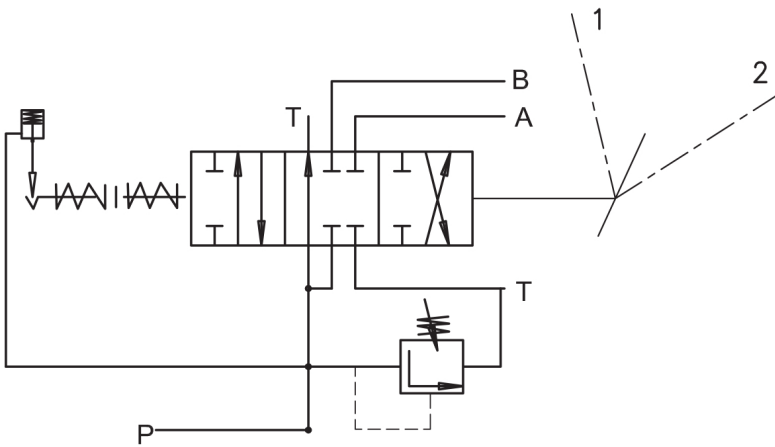
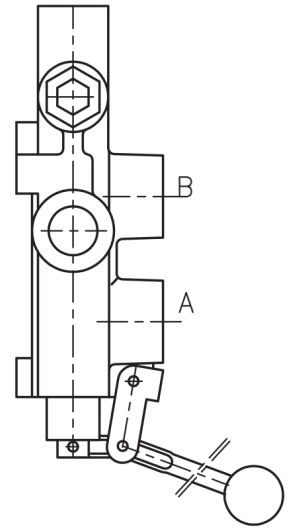
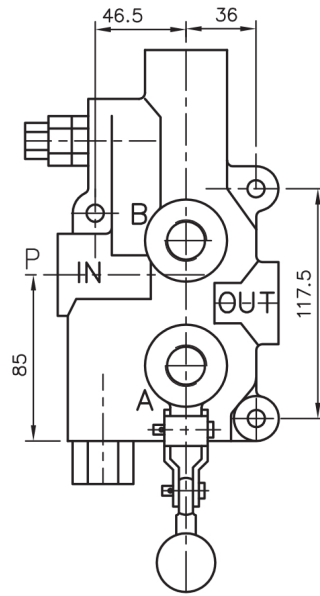
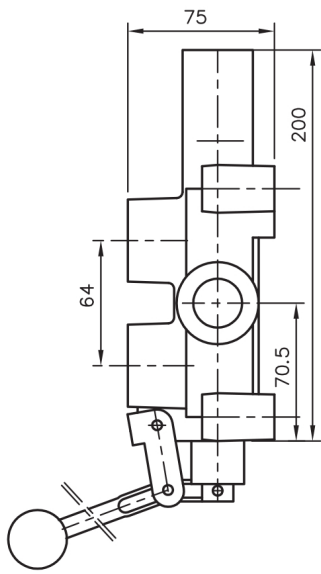
80 l/min (see "operating" diagram)

12. Spool stroke

± 7.9 mm

13. Actuating force

< 220 N in spool axis direction



ORDER CODE: **P81** **A** **2** **G**

directional control valve (80 l)

spool type (A)

spool control
Detend with hydr. release (70-140 bar)

port sizes (S, NPT or G)
(S10=SAE10; G12=G1/2; NPT12=NPT 1/2)