

# Redashe

## J3500-SMD Rechargeable Slim Light

The J3500-SMD has 15 high output SMDs with two power settings, the first of which is exceptionally bright, giving approximately 600 lumens and will run for 4 hours. The second setting will reduce the light output but increase the run time to 7 hours. The built-in battery monitor, located in the handle, gives a clear visual indication of battery status. Recharging the light will take 5.5 hours; this can be done using the included USB plug and cable or any USB port.

The unit is constructed from ABS plastic and aluminium, making the unit very robust. The aluminium light wand is extremely slim (7mm) allowing the light access to difficult-to-reach areas. The built-in hook and magnet allow for hands-free working in confined areas. The light pivots in the centre through 150 degrees; each step is 30 degrees. This allows the light to be directed exactly where it is required.

### Features

- Ultra slim (7mm) designed to access difficult areas
- Robust aluminium body
- 15 high output SMDs, approximately 600 lumens (maximum 7.5w)
- High capacity lithium-ion rechargeable battery for longer life and consistent power
- Powerful magnetic base for hands-free operation
- Top mounted, 360° rotating, hanging hook for hands-free operation
- Lamp body pivots up to 150° in 30° increments, allowing accurate direction of the strip light
- Built-in automatic charging cut off, protecting the battery from overcharging
- Built-in battery level indicator on the handle
- Supplied complete with AC/DC adaptor, 100-240V, USB plug and USB charging lead
- 12 month warranty



### Technical Data

<b>Power Supply Type</b>	Rechargeable	
<b>Materials</b>	Aluminium/ABS plastic	
<b>Battery</b>	4400 mAh	
<b>Charging System</b>	Input: 100-240V AC	Output: 5V 2A
<b>Charging Time</b>	5.5 hours	
<b>Operation Time</b>	Full brightness mode: 4 hours	Reduced brightness mode: 7 hours
<b>SMD / LED</b>	15 / 7.5W	



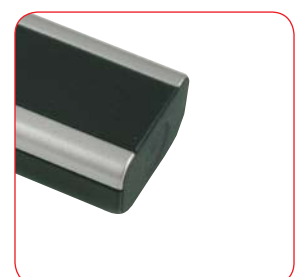
Battery Level Indicator



MicroUSB Charging Port



360° Hanging Hook



Magnetic Base