

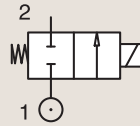
2/2 Valves For All Fluids & Air

DIRECT OPERATED



316L STAINLESS ST.
PIPE MOUNTING

NORMALLY CLOSED



| Port size | Orifice Ø | Flow factors | | | Seat Seal | Atex Zone | Operating Pressure Differential | | Fluid Temp. | | Power | Voltage | Solenoid Valve Order Number |
|-----------|-----------|--------------|---------|----------|-----------|-----------|---------------------------------|---------|-------------------|------------------------|-------|-------------------|-----------------------------|
| | | Kv l/min | KV m³/h | Qn l/min | | | Min bar | Max bar | Min °C | Max °C | | | |
| 1/8" | 1.5 | 1 | 0.06 | - | FKM | - | 0 | 20 | -10 | 140 | 4 | 220-230V/50Hz | 550001DIS ₁ |
| | | | | | | | 0 | 10 | -10 | 140 | 5 | 24 Vdc | 550000DIS ₁ |
| | | | | | | | 0 | 20 | -10 | 140 | 4 | 220-230V/50Hz | 550003DIS ₁ |
| 1/4" | 2.5 | 2.3 | 0.14 | - | FKM | - | 0 | 10 | -10 | 140 | 5 | 24 Vdc | 550002DIS ₁ |
| | | | | | | | 0 | 4 | -10 | 140 | 4 | 220-230V/50Hz | 550005DIS ₁ |
| | 0 | 4 | -10 | | | | 140 | 5 | 24 Vdc | 550004DIS ₁ | | | |
| | 0 | 10 | -10 | | | | 140 | 11 | 220V/50-240V/60Hz | 550007DIS ₂ | | | |
| 3/8" | 5 | 11 | 0.66 | - | FKM | - | 0 | 11 | -10 | 140 | 12 | 24 Vdc | 550006DIS ₂ |
| | | | | | | | 0 | 4 | -10 | 140 | 11 | 220V/50-240V/60Hz | 550009DIS ₂ |
| 1/2" | 5 | 11 | 0.66 | - | FKM | - | 0 | 4 | -10 | 140 | 12 | 24 Vdc | 550008DIS ₂ |
| | | | | | | | 0 | 4 | -10 | 140 | 11 | 220V/50-240V/60Hz | 550011DIS ₂ |
| | | | | | | | 0 | 4 | -10 | 140 | 12 | 24 Vdc | 550010DIS ₂ |

Notes:

- 1. Drawing number 1
- 2. Drawing number 2

Fast Delivery

