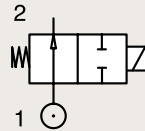


2/2 Valves For All Fluids & Air

Direct Operated

316L STAINLESS ST.
PIPE MOUNTING

NORMALLY OPEN



Port size	Orifice Ø	Flow factors			Seat Seal	Atex Zone	Operating Pressure Differential		Fluid Temp.		Power	Voltage	Solenoid Valve Order Number
		Kv l/min	KV m³/h	Qn l/min			Min bar	Max bar	Min °C	Max °C			
1/4"	3	4.5	0.27	-	FKM	-	0	6	-10	140	8	220-230V/50Hz	550013DIS
							0	6	-10	140	9	24 Vdc	550012DIS

Fast Delivery

