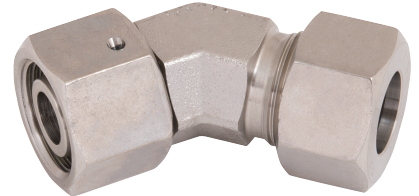
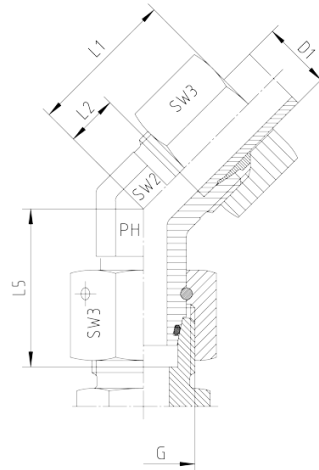


316 Stainless Steel DIN 2353 Tube Fittings



EDELSTAHL / STAINLESS STEEL
VERBINDUNGSTECHNIK
FLUID CONNECTORS

45° Adjustable Elbows



With Taper and O-ring - Viton

Cutting Ring Connection at the Tube Connection side

Series L								
Part Number	Pressure	Tube O.D.	Thread	Approx. Dimensions				
	PN	D1	G = BSP	L1	L2	L5	SW2	SW3
EV-DKOL-06	500	6	M 12 x 1,5	24	9,0	26,0	14	14
EV-DKOL-08	500	8	M 14 x 1,5	27	12,0	27,5	14	17
EV-DKOL-10	500	10	M 16 x 1,5	27	12,0	29,0	19	19
EV-DKOL-12	400	12	M 18 x 1,5	29	14,0	29,5	19	22
EV-DKOL-15	400	15	M 22 x 1,5	32	17,0	32,5	22	27
EV-DKOL-18	400	18	M 26 x 1,5	33	16,5	35,5	27	32
EV-DKOL-22	250	22	M 30 x 2	35	18,5	38,5	30	36
EV-DKOL-28	250	28	M 36 x 2	40	23,0	41,5	36	41
EV-DKOL-35	250	35	M 45 x 2	48	26,5	51,0	50	50