



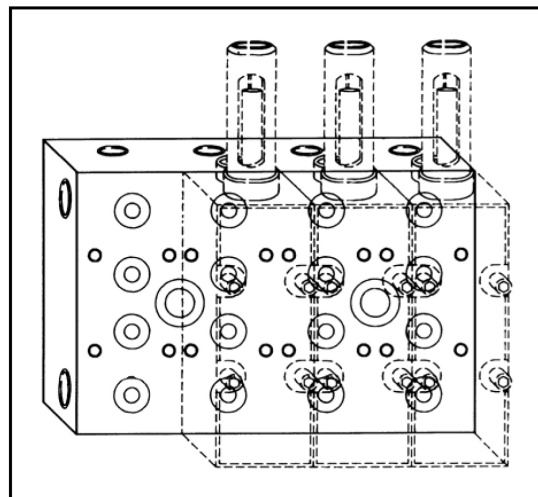
## Modular Valve Manifold Adaptor Models MA1, MA5 and MA15

### Description

Three ranges of piping adaptors suitable for mounting the modular measuring valves, DDM1, SDM1, DDM5, SDM5, DDM15 and SDM15.

### Benefits

- ◆ Adaptors can be permanently fixed to the lubrication system pipework before valves are fitted reducing possibility of contamination during installation period.
- ◆ 'O' Ring recesses are fitted into the top of the adaptor so that the fitter can observe the condition of the 'O' rings when he is fitting the module.
- ◆ Adaptors are available from stock suitable for fitting from one to four modules.



### Installation

Each adaptor is supplied with two mounting screws, (except the two-module unit which has one central mounting screw).

The adaptor should be mounted onto a flat surface on the machine in any aspect before the modules are fitted. This is necessary because the mounting screws are fitted into counterbores which are partially covered by the module.

All ports are suitable for use with standard BSP fittings (parallel or taper).

The 'O' rings are supplied with each module and will be retained in their recesses after being pressed into position.

The manifold adaptors are supplied with two outlet ports for each module section. If a single outlet port is required, either to suit the installation or to give up to twice the maximum discharge, a single discharge valve module model SDM must be used. The outlet port not required under that module must be plugged.

### Ordering

No. of Modules	No. of Outlets	DDM1 Size		DDM5 Size	
		Model	Code	Model	Code
1	2	MA1-2	17610	MA5-2	17710
2	4	MA1-4	17620	MA5-4	17720
3	6	MA1-6	17630	MA5-6	17730
4	8	MA1-8	17640	MA5-8	17740

No. of Modules	No. of Outlets	MA15 Size	
		Model	Code
1	2	MA15-2	17850
2	4	MA15-4	17860
2	1	MA30-1	17870

### Specification

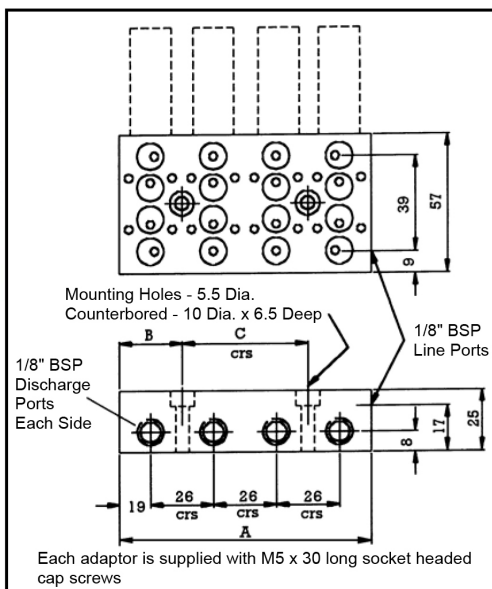
Maximum Working Pressure	350 bar
Material - Body	Steel zinc plated





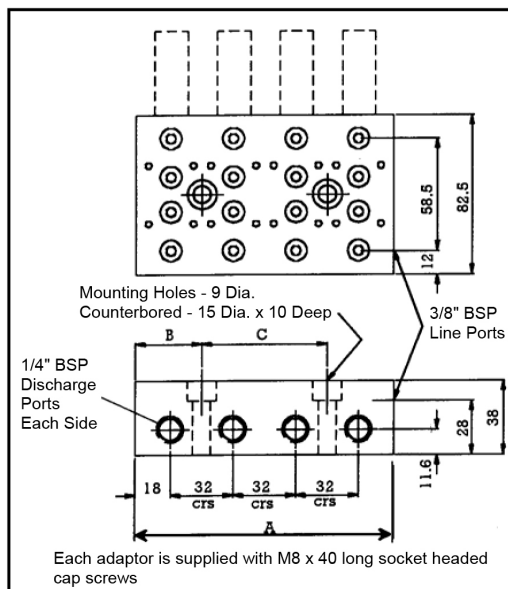
## Dimensions

### MA1 Manifold Adaptor



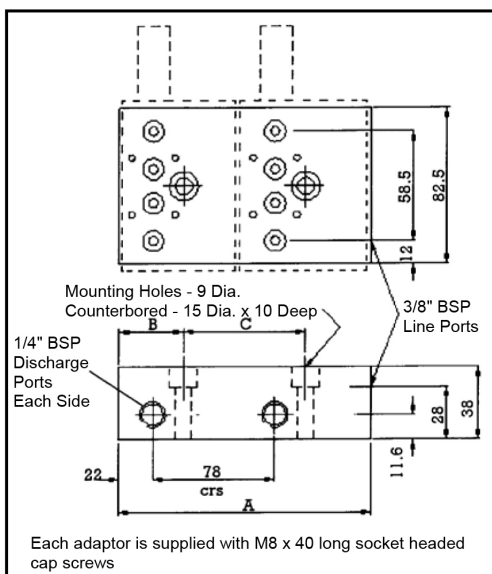
Model	No. of Modules	No. of Outlets	Dimensions (mm)			Weight (kg)
			A	B	C	
MA1-2	1	2	36	7	22	0.4
MA1-4	2	4	64	32	-	0.57
MA1-6	3	6	90	32	26	0.86
MA1-8	4	8	116	32	52	1.14

### MA5 Manifold Adaptor



Model	No. of Modules	No. of Outlets	Dimensions (mm)			Weight (kg)
			A	B	C	
MA5-2	1	2	46	9	28	1.1
MA5-4	2	4	68	34	-	1.5
MA5-6	3	6	100	34	32	2.4
MA5-8	4	8	132	34	64	3.2

### MA15 Manifold Adaptor



Model	No. of Modules	No. of Outlets	Dimensions (mm)			Weight (kg)
			A	B	C	
MA15-2	1	2	77	38	-	1.7
MA15-4	2	4	155	38	78	3.8
MA30-1	2	1	155	38	52	3.8

