



Product description

**Valve & dividers :**  
**Volumetric**  
**injector**  
**FL 32, 33 Grease**

**DESCRIPTION**

FL 30 injectors are perfectly adapted to lubricate all types of machines with a cyclic sequence. Discharge of each injector is adjustable yet delivers a precise amount of lubricant. A visual indicator pin built into each injector makes it easy to confirm a discharge at any lubrication point.

**OPERATION**

**Pressure stage:** Pressure from the supply lines moves the injector piston forward. This forces a pre measured amount of lubricant (delivered during the vent stage) out of the discharge chamber outlet. At the same time, lubricant is transferred into the measuring chamber, the indicator stem extends as this chamber fills.

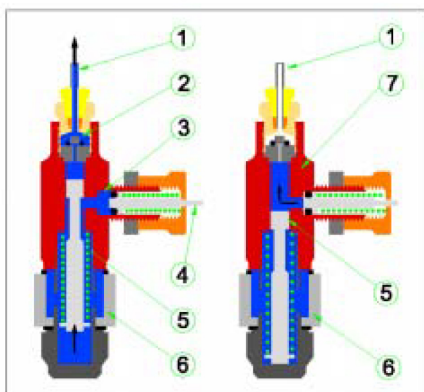
**Vent stage:** System pressure is vented. The piston retracts to its original position. This movement allows lubricant stored in the measuring chamber to empty into the discharge chamber; the indicator stem retracts.



**CHARACTERISTICS**

Discharge: .... from 0.016 to 0.131cm<sup>3</sup> / cycle FL32  
 0.016 to 0.049 cm<sup>3</sup> / cycle FL33  
 Number of outlets: ..... 1 to 6  
 Working pressure: ..... 82 bar mini  
 230 bar maxi  
 Maximum vent recharge pressure: ..... 14 bar  
 Working temperature: ..... 5 to 175° C  
 Lubricant to be used: ..... grease NLGI 000 2 max.  
 Other lubricants, contact Bijur.  
 Materials: galvanised carbon steel and viton seals

**System outline:**



- |                     |                    |
|---------------------|--------------------|
| 1. Lubricant outlet | 5. Idle position   |
| 2. Dosing piston    | 6. Discharge cycle |
| 3. Pilot piston     | 7. Release cycle   |
| 4. Lubricant inlet  |                    |

**HOW TO ORDER**

Specify part number in using table below:

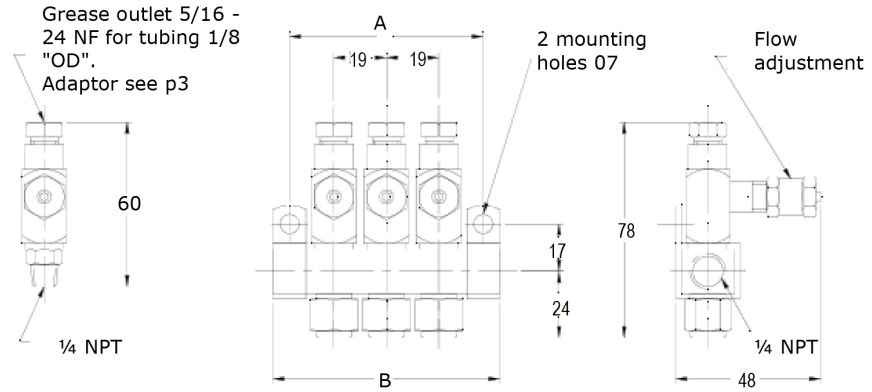
Reference injector		Number of outlets
Type FL 32	Type 33	
27163	27164	1*
271631	271641	1
271632	271642	2
271633	271643	3
271634	271644	4
	271645	5
	271646	6
27163R	27164R	#

\* Single direct mount FL 32 1 / 4 NPT  
 FL 33 1 / 8 NPT

# Manifold replacement injector

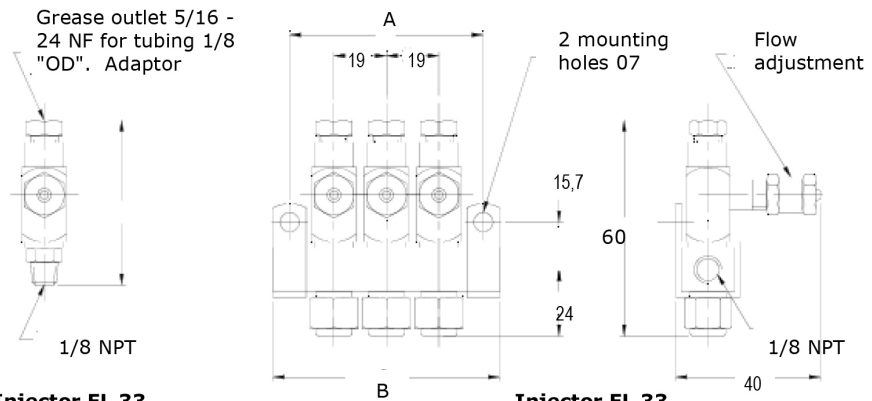


**DRAWING: INJECTOR FL32-33 GREASE**



**Injector FL 32 for direct mounting**

**Injector FL 32 for manifold mounting**



**Injector FL 33 for direct mounting**

**Injector FL 33 for manifold mounting**

Number of outlets	Dimensions (mm)			
	Injector FL32		Injector FL33	
	A	B	A	B
1	32	44	30	41
2	51	63	48	60
3	70	82	67	70
4	89	102	87	98
5	-	-	105	117
6	-	-	124	137

**Discharge adjustment**

On all injectors, the amount of discharge is controlled by the position of the indicator cap.

Fully tighten the indicator cap to obtain the minimum discharge 0,016 Cm<sup>3</sup>.  
To increase the output, loosen the indicator cap as required.

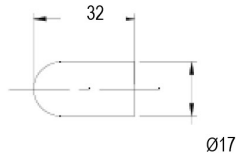
**FL 32:** 5 turns for the maximum (0.131cc)  
**FL 33:** 2 turns for the maximum (0.049cc)



**ACCESSORIES FOR: INJECTOR FL32-33 GREASE**

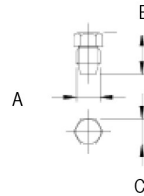
**Injector cover caps Part N° 27335**

Cover caps in plastic are used in environments where excessive moisture, dirt and other contaminants exist. They are intended to protect the indicator pin to avoid lubricant leakages.



**Plug**

Can be used to close surplus tapped holes (see table below).

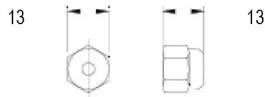


Dimensions ( mm )			Reference
A	B	C	
5/16-24NF	13	8	27336
1/8NPT	18	9,5	HP604
1/4NPT	6,4	4,8	HP622

**Lock nut Part N° 27347**

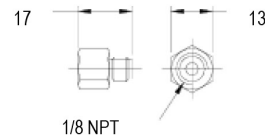
Nut can be used to replace adjustment screw to obtain a fixed discharge.

Injector FL 32/43: 0,033 cm<sup>3</sup> /cycle  
 Injector FL 33/42: 0,049 cm<sup>3</sup> /cycle



**Adapter Part N° 27348**

Can be mounted on discharge port.



**Connector for manual greasing Part N° 27344**

Simply a zerk fitting mounted onto a junction. It can be used to fill secondary lines before the first start-up.

