

Pressure Relief Valves



APPLICATION

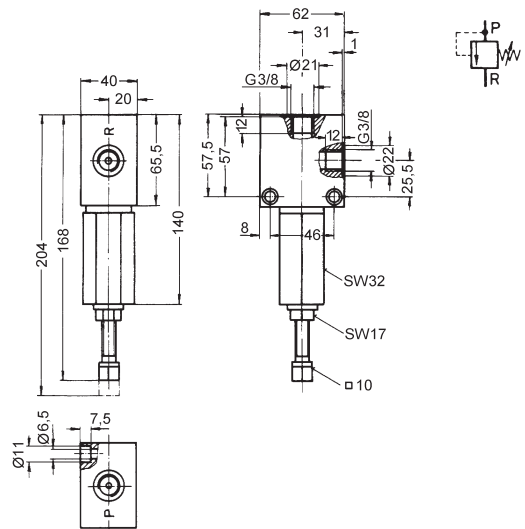
The pressure relief valve is preferably used as safety valve to protect central lubrication systems from overpressure. It is suitable especially in total-loss systems.

PRODUCT CHARACTERISTICS

- adjustable from 0 to 400 bar
- rugged design
- Lubricant: oil, grease

FUNCTION

In the event of a pressure in a central lubrication system rising in excess of the pre-set rating, lubricant is allowed to return via the return line (R) into the depressurized pump suction chamber, as long as the overpressure situation has been overcome.



A. VALVE TYPE	Code
----------------------	-------------

SAG

B. OPENING PRESSURE	Code
----------------------------	-------------

0 - 400 bar

40

C. REVISION	Code
--------------------	-------------

Status A

A

SPECIFICATION

Opening pressure adjustable : _____ 0 to 400 bar
 Temperature range : _____ - 20° C to + 80° C
 Flow media :
 Mineral oils _____ above 190 cSt service viscosity
 Greases _____ up to walk penetration NLGI class 3
 Installation position : _____ optional
 Weight : _____ 1.5 kg

EXAMPLE OF ORDER

Code						
S	A	G	4	0	A	0 0

Valve type SA-G	Code: SAG
Opening pressure 400 bar	Code: 40
Revision Status A	Code: A
Accessories without	Code: 00

