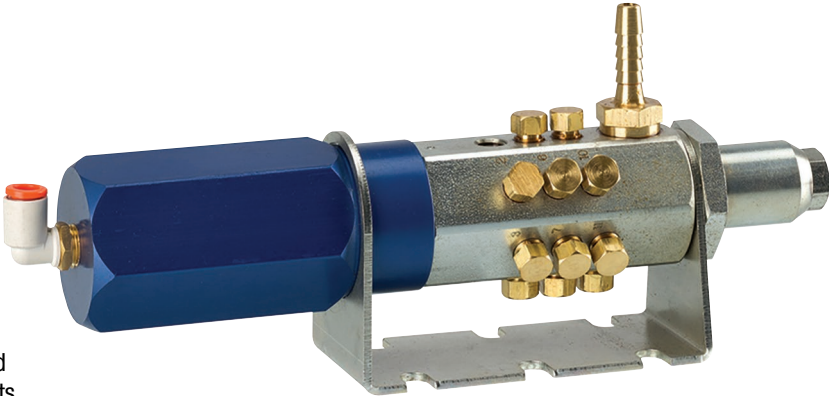


Mul-T-Shot Pump



DESCRIPTION

The Mul-T-Shot Pump is an air operated pump with multiple lube outlets to serve more than one lubrication point. Designed as an economical means of providing lubricant to several points. Once the number of lube points has been determined, simple modification to the lube piston stop dictates the number of active lube delivery points. Equal and measured amounts of lubricants are dispensed from each outlet independent of outlet back pressure.

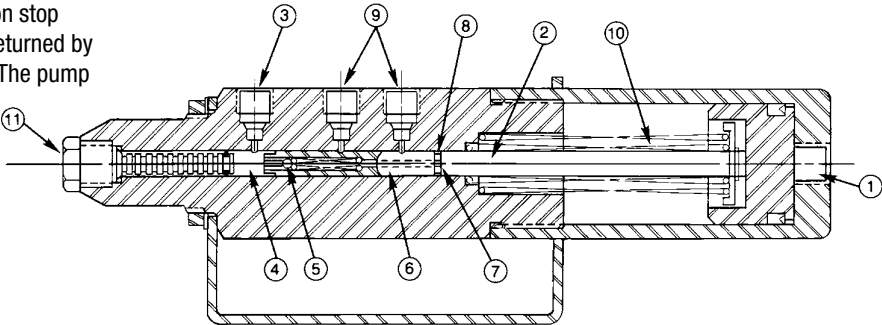


FEATURE/BENEFITS

- Multiple pump outlets. Can handle 1 to 12 lube points through simple pump modification.
- Outlets are independent of each other, a broken lube line will not affect the other points lube supply.
- Equal quantity of lubricant is supplied to each point, regardless of outlet back pressure.
- Can be used with oil.
- Independent lube outlet ports allows for different lubricant pressures to be developed.

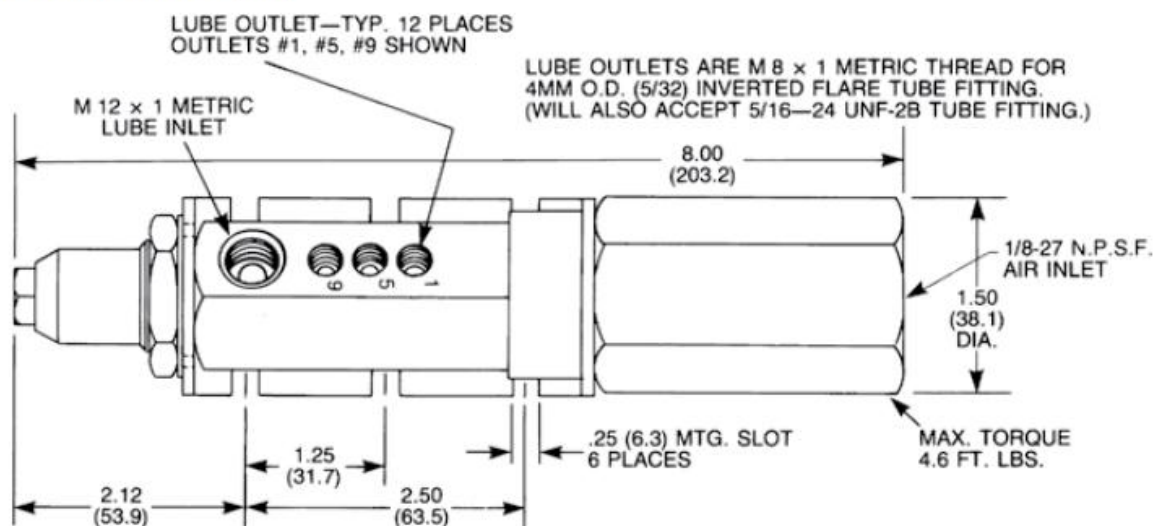
OPERATION

When air is supplied to air inlet port (1), the lube piston (2) is moved forward and closes off the lube inlet port (3). As the lubricant in the lube chamber (4) is compressed the internal check valve (5) is cracked open. Lubricant is forced through a channel (6) in the lube piston, and reaches an outlet hole (7) that allows lube to flow to an undercut (8) on the piston. When the undercut (8) opens to a lube outlet (9), the lubricant from the chamber (4) flows, under pressure, to the lube system. This starts with lube outlet number one and continues sequentially thru lube outlets until the lube piston's movement is stopped by the piston stop (11). Air pressure is then exhausted, the lube piston is returned by spring force (10) and the lube chamber (4) is reprimed. The pump is now ready for the next cycle.

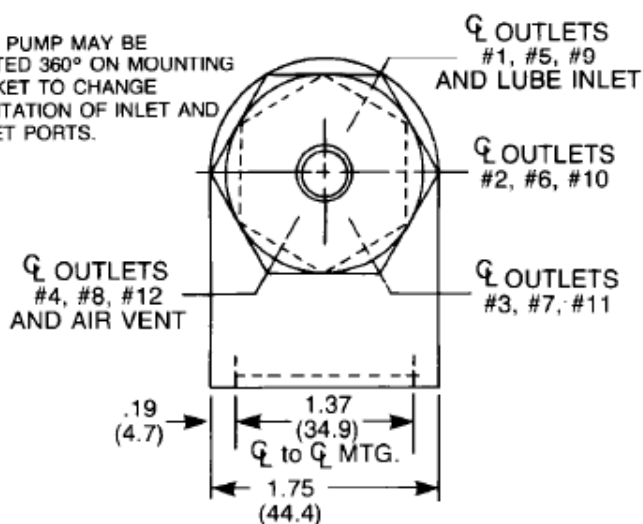


SPECIFICATIONS	
Material	Steel Pump, Aluminum Air Cylinder
Output per Stroke per Outlet	0.005 cu.in. (0.082 cm³)
Number of Outlets	1 to 12
Max Cycle Rate w/light oil at room temp	
12 Outlet	110 cycles/min
10 Outlet	150 cycles/min
8 Outlet	190 cycles/min
6 Outlet	280 cycles/min
4 Outlet	350 cycles/min
Air Operating Pressures	50-100 psi (344.7-689.4 kPa)
Lube to Air Ratio	25:1
Max Lube Inlet Pressure	150 psi (1034.1 kPa)
Lubricant	Oil
Port Sizes	
Lube Inlet	M 12 x 1 metric
Lube Outlet	M 8 x 1 metric or 5/16-24 UNF2B
Air Inlet	1/8-27 NPSF

DIMENSIONS Inches (mm)



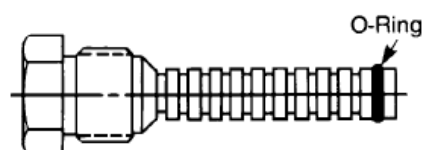
NOTE: PUMP MAY BE ROTATED 360° ON MOUNTING BRACKET TO CHANGE ORIENTATION OF INLET AND OUTLET PORTS.



PREPARATION

Preparing the Mul-T-Shot Pump for use:

1. The Mul-T-Shot Pump is shipped from the factory with one active lube outlet port (outlet #1). If more than one port is required, modification to the lube piston stop is required.
2. Determine the number of lube points to be lubricated with the Mul-T-Shot Pump.
3. Modify the lube piston stop to accommodate the number of lube outlet ports required.
4. To increase the number of lube outlets, remove lube piston stop (shown below) from the pump.
5. Remove O-ring and cut off stop at the groove corresponding to the number of outlets required. Each stop removed increases usable outlets by one (12 maximum).
6. File cut-off end square and smooth. Reinstall O-ring. Reinstall lube piston stop to pump.
7. Plug ports not being used starting with #12 and working back in reverse numerical order.



ORDERING INFORMATION

Description	Part No.	Old Part No.
Mul-T-Shot Pump	565977	803812S
Outlet Pumps (qty 11), Metric Lube Inlet Adapter Kit	564438	560-001-960
Spare Piston Stop	568363	521-100-130
Spare Piston Stop O-Ring	565339	423-700-072

Bijur endorses the SAE recommendation of ISO 18/14 (ISO 4406) oil cleanliness for most bearing applications. Some high speed bearings may require cleaner oil. Consult the bearing manufacturer for recommendation.