

Hygienic Ball Valves



Ball Valve For Food And Bpe Use With ISO Mount Plate Weld/male/clamp End-fulled Cavity Seat

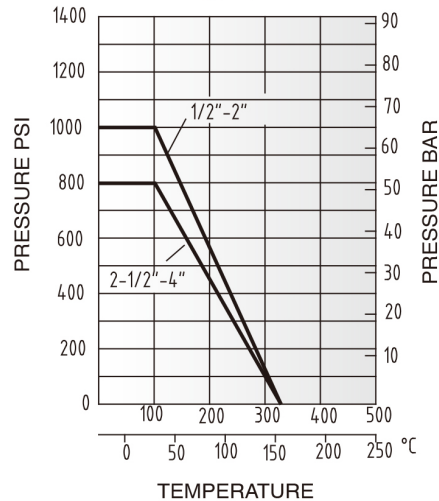


Weld End



Clamp End

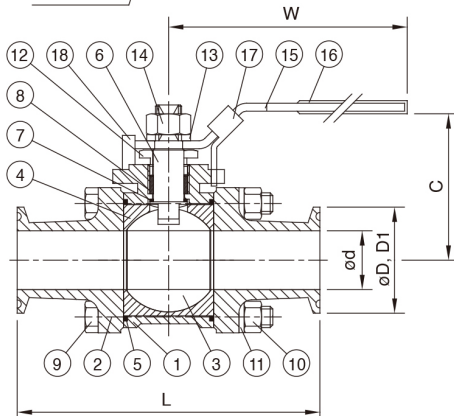
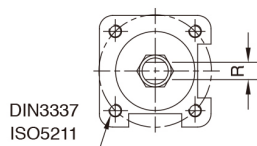
PRESSURE TEMPERATURE RATING
1/2"~4"



- Lock device can be required.
- 100% air tested under water at 100psi, open and closed positions.
- Hydrostatic test pressure :
Body W.P 1000 PSI Tube End W.P 200 PSI
- Standard End: Weld & Clamp-End
Other SMS. DIN. RJT. IDF
Male/Male can be required.

Specifications for Clamp & Weld End

SIZE	1/2"	3/4"	1"	1.5"	2"	2.5"	3"	4"
	DN15	DN20	DN25	DN40	DN50	DN65	DN80	DN100
ISO-5211	F03	F03	F04	F05	F05	F07	F07	F10
C	55	60	69	84	92	126.8	136	158.8
ød	9.4	15.75	22.1	34.8	47.5	60.2	72.9	97.4
øD	25	25	50.4	50.4	63.9	77.4	90.9	118.9
øD1	12.7	19.05	25.4	38.1	50.8	63.5	76.2	101.6
L	89	101	114	140	156	197	229	242.7
R	5	5	6.5	8.5	8.5	12	12	16
W	132	131.5	165	194.3	194.3	252	252	332



NO.	PART NAME	MATERIAL
1	BODY	ASTM-A743-CF8M
2	CAP	ASTM-A743-CF8M
3	BALL	A351-CF8M
4	Seat	PTFE
5	GASKET	PTFE
6	STEM	SUS316
7	THRUST WASHER	PTFE
8	STEM PACKING	PTFE
9	BOLT	SUS304
10	HEX NUT	SUS304
11	BOLT WASHER	SUS304
12	GLAND	SUS304
13	WASHER	SUS304
14	NUT	SUS304
15	HANDLE	SUS304
16	PLASTIC COVER	PLASTIC
17	LOCK DEVICE	SUS304
18	STOP PIN	SUS304